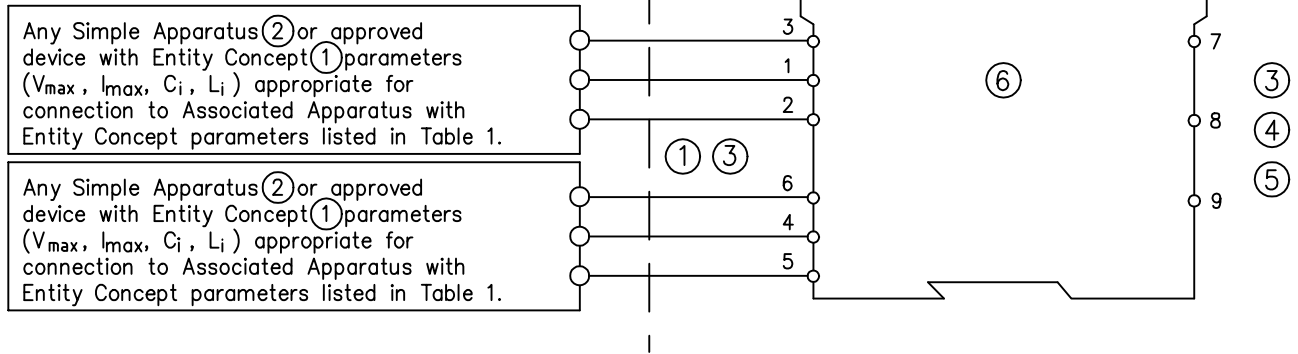


UNCLASSIFIED LOCATION
or
HAZARDOUS (CLASSIFIED) LOCATION
CLASS I, DIVISION 1, GROUPS A,B,C,D
CLASS II, DIVISION 1, GROUPS E,F,G
CLASS III, DIVISION 1
or
CLASS I, ZONE 0 and 1, IIC

NONHAZARDOUS LOCATION
or
CLASS I, DIVISION 2, GROUPS A,B,C,D
or
CLASS I, ZONE 2, GROUP IIC



Model Numbers	Terminals	Entity
KFD0-RO-Ex2	1-3, 4-6	Voltage-free contacts for connection to I.S. Circuits: $V_{oc} = 0V$, $I_{sc} = 0A$

- ① The Entity Concept allows interconnection of intrinsically safe apparatus with associated apparatus not specifically examined in combination as a system when the approved values of (U_o or V_{oc} or V_t) and (I_o or I_{sc} or I_t) for the associated apparatus are less than or equal to (U_i or V_{max}) and (I_i or I_{max}) for the intrinsically safe apparatus and the approved values of (C_o or C_a) and (L_o or L_a) for the associated apparatus are greater than $C_i + C_{cable}$ and $L_i + L_{cable}$ respectively for the intrinsically safe apparatus.
- ② Simple Apparatus: An electrical component or combination of components of simple construction with well defined electrical parameters that does not generate more than 1.5 volts, 100 milliamps, and 25 milliwatts, or a passive component that does not dissipate more than 1.3 watts and is compatible with the intrinsic safety of the circuit in which it is used.
- ③ Wiring methods must be in accordance with the National Electrical Code.
- ④ Barriers shall not be connected to any device which uses or generates internally any voltage in excess of 250Vrms or DC unless the device has been determined to adequately isolate the voltage from the barrier according to the authority having jurisdiction.
- ⑤ Connection of the barriers to ground is not required
- ⑥ Barrier shall be installed in an enclosure meeting the requirements of ISA 82.02.01 or any other applicable ordinary location standard.

Dieses Dokument enthält sicherheitstechnische Angaben. Es darf nicht ohne Absprache mit dem Normenfachmann geändert werden!

This document contains safety-relevant information. It must not be altered without the authorization of the norm expert!

copyright protected acc. DIN 34	Only valid as long as released in EDM or with a valid production documentation!	scale: 1:1	date: 2002-May-24	
 Twinsburg	Control drawing KFD0-RO-EX2	change notice	respons. US.RJS	
			approved	US.DCH
			norm	US.WDB
		116-0261		
		sheet 1 of 1		