

QUICK START GUIDE

FieldConnex® Diagnostic Manager





With regard to the supply of products, the current issue of the following document is applicable: The General Terms of Delivery for Products and Services of the Electrical Industry, published by the Central Association of the Electrical Industry (Zentralverband Elektrotechnik und Elektroindustrie (ZVEI) e.V.) in its most recent version as well as the supplementary clause: "Expanded reservation of proprietorship"



1	Preface	4
2	Download Package "FieldConnex® Diagnostic Manager only"	5
3	Download Package "Diagnostic Gateway FF DTM"	7
4	CD Distribution and Software and Download Package Diagnostic Manager + Accessories + Tools	8
4.1	CD-ROM	8
4.2	All-In-One Internet Package	9
5	Licensing	10

1 Preface

This guide will lead you through the installation procedure of all Software components needed to be installed prior to the operation of the ADM. For an operational ADM System the following components are required:

- Microsoft .Net Framework
- PACTware™ Framework
- FieldConnex® Diagnostic Manager or DiagnosticGateway FF DTM

Whether a FieldConnex® Diagnostic Manager or Diagnostic Gateway DTM is required depends on the used DCS integration. Details are described in the manual.

Three different Software Packages are available for the ADM system

- Download Package **Diagnostic Manager only**: a download package including only the FieldConnex® Diagnostic Manager and Tools required for FDS/OPC Integration
- Download Package **Diagnostic Gateway FF DTM**: DTM required if the FF-H1 Integration is used.
- **CD Distribution** and Software and Download Package **Diagnostic Manager + Accessories + Tools**: a CD distribution or download package of all required software including PACTware™, Microsoft .Net Framework and all available DTMs and Tools.



Note!

You need to be logged on to Windows with administrator privileges during installation

2 Download Package "FieldConnex® Diagnostic Manager only"

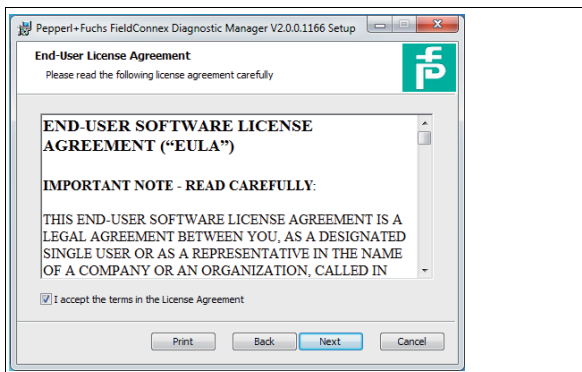
Requirements:

- Operating System and Hardware requirements according to the Release notes of the FieldConnex® Diagnostic Manager
- Microsoft .Net Framework 2.0, 3.0 or 3.5 installed
- A supported FDT Frame application. For details see the release notes of the FieldConnex® Diagnostic Manager

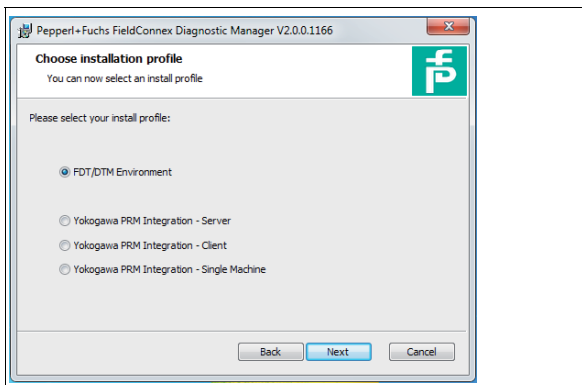
Install FieldConnex® Diagnostic Manager

1. Download the FieldConnex® Diagnostic Manager to your PC.
2. Unzip the package to a temporary folder of your choice.
3. Go to the FieldConnex® Diagnostic Manager Directory inside the temporary folder.
4. Run the setup by starting FieldConnexDiagnosticSetup.exe.
5. To start the installation process, click **Next**.

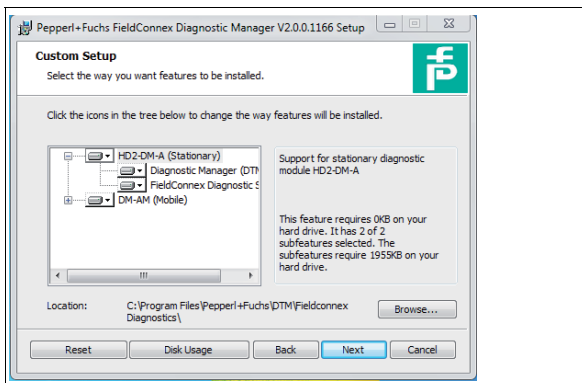
↳ The window License Agreement appears.



6. To continue, accept the End-User License Agreement by clicking **Next**.
7. To install the software components needed for the configuration of the stationary and mobile Advanced Diagnostic Module, choose your installation profile and click **Next**. These settings are valid for the common use cases.



8. Choose software installation for HD2-DM-A or/and the mobile DM-AM.



9. Enter the installation location and click **Next**.
10. To continue, click **Install**.
11. Wait for the wizard to complete the installation.

↳ After installation is completed you may delete the created temporary folder and its content.

3 Download Package "Diagnostic Gateway FF DTM"

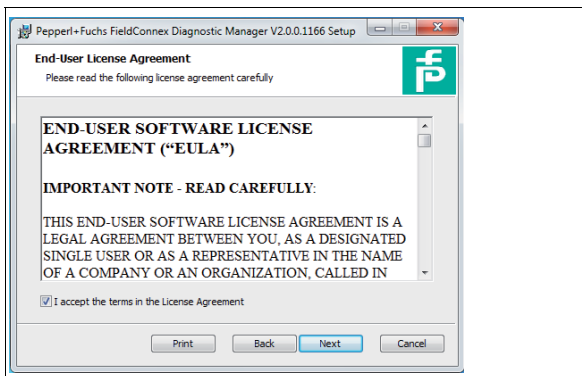
Requirements:

- Operating System and Hardware requirements according to the Release notes of the FieldConnex Diagnostic Gateway DTM
- Microsoft .Net Framework 2.0, 3.0 or 3.5 installed
- A supported FDT Frame application. For details see the release notes of the FieldConnex Diagnostic Gateway DTM release notes

Install FieldConnex Diagnostic Gateway DTM

1. Download the FieldConnex® Diagnostic Gateway DTM to your PC.
2. Unzip the package to a temporary folder of your choice.
3. Go to the FieldConnexDGWFF Directory inside the temporary Folder.
4. Run the setup by starting FieldConnexDGWFFSetup.exe.
5. To start the installation process, click **Next**.

↳ The window License Agreement appears.



6. To continue, accept the End-User License Agreement by clicking **Next**.
7. Enter the installation location and click **Next**.
8. To continue, click **Install**.
9. Wait for the wizard to complete the installation.

↳ After installation is completed you may delete the created temporary folder and its content.

4 CD Distribution and Software and Download Package Diagnostic Manager + Accessories + Tools

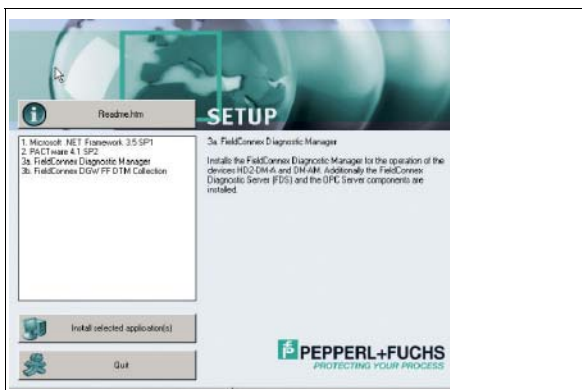
Requirements:

- Operating System and Hardware requirements according to the Release notes of the FieldConnex Diagnostic Gateway DTM

4.1 CD-ROM

Install from CD-ROM

1. Insert the provided CD-ROM into your drive.
2. If the Windows autostart option is enabled, the setup wizard will start automatically. Otherwise change to the CD-ROM root directory and double-click autorun.exe.
↳ The installation Wizard appears.
3. Select the components you like to install.



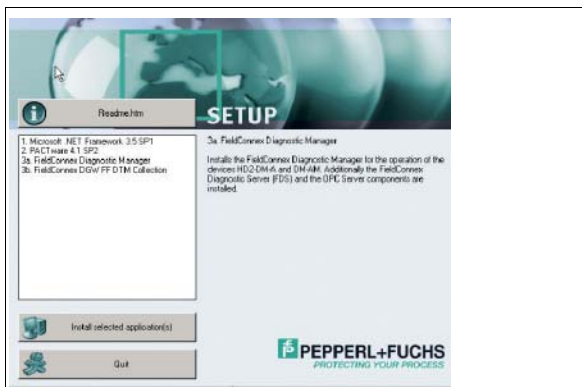
4. Click **Install selected application(s)**.
5. To complete the installation, follow the instructions of the wizard.

4.2 All-In-One Internet Package



Install the All-In-One Package

1. Download the All-in-one Installation package to your PC.
2. Create a temporary folder like c:\ADM-Installation.
3. Extract the downloaded zip-file to this folder.
4. Double-click the autorun.exe file in this folder.
↳ The installation Wizard appears.
5. Select the components you like to install.



6. Click **Install selected application(s)**.
7. To complete the installation, follow the instructions of the wizard.

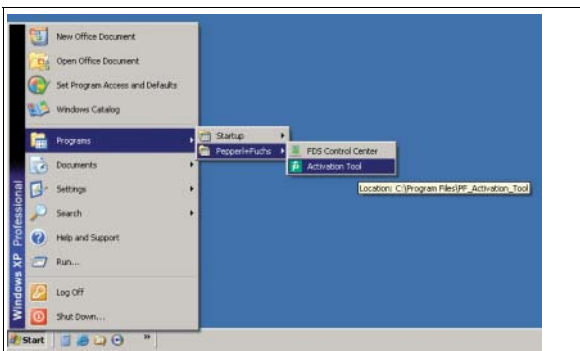
5 Licensing

After the installation has been completed the FieldConnex® Diagnostic Manager remains first a basic version with reduced functionality. To activate the fully featured version a License Key is needed. The License Key is printed on the License Certificate you have optionally received with the FieldConnex® Diagnostic Manager Software Package.

If you have downloaded the FieldConnex® Diagnostic Manager via Internet a License Key can be ordered through your local Pepperl+Fuchs representative.

License Activation

1. Start the Pepperl+Fuchs License Activation Tool: **Programs>Pepperl+Fuchs>Activation Tool**.



2. Enter your License Key into the 6 code boxes.



3. Click **Activate**.
4. After activation is confirmed, click **Finish** to close the window.

PROCESS AUTOMATION – PROTECTING YOUR PROCESS



Worldwide Headquarters

Pepperl+Fuchs GmbH
68307 Mannheim · Germany
Tel. +49 621 776-0
E-mail: info@de.pepperl-fuchs.com

For the Pepperl+Fuchs representative
closest to you check www.pepperl-fuchs.com/contact

www.pepperl-fuchs.com

Subject to modifications
Copyright PEPPERL+FUCHS • Printed in Germany

 **PEPPERL+FUCHS**
PROTECTING YOUR PROCESS

194564

DOCT-0984F
09/2012