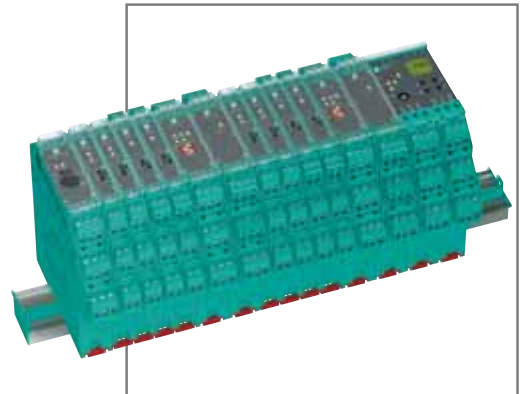




# RELIABLE SIGNALS SIGNAL CONDITIONERS IN K-SYSTEM



# K-SYSTEM: THE SYSTEM CONCEPT IS PRIORITY

Pepperl+Fuchs is a leading manufacturer of interface technology. In addition to a large number of isolated barriers for explosion protection, our product range comprises numerous signal conditioners for process automation. Signal conditioners in the K-System are easy to specify, integrate and expand. Many years of experience makes this series synonymous with safety and reliability.

## EXTENSIVE PRODUCT RANGE

- For all signals and applications
- From simple switch amplifiers to highly functional signal converters
- All modules with high-quality galvanic isolation
- Low heat dissipation thanks to low power consumption
- Broad supply voltage range including AC, DC, and our universal power supply (AC/DC)

## REDUCED MOUNTING COSTS

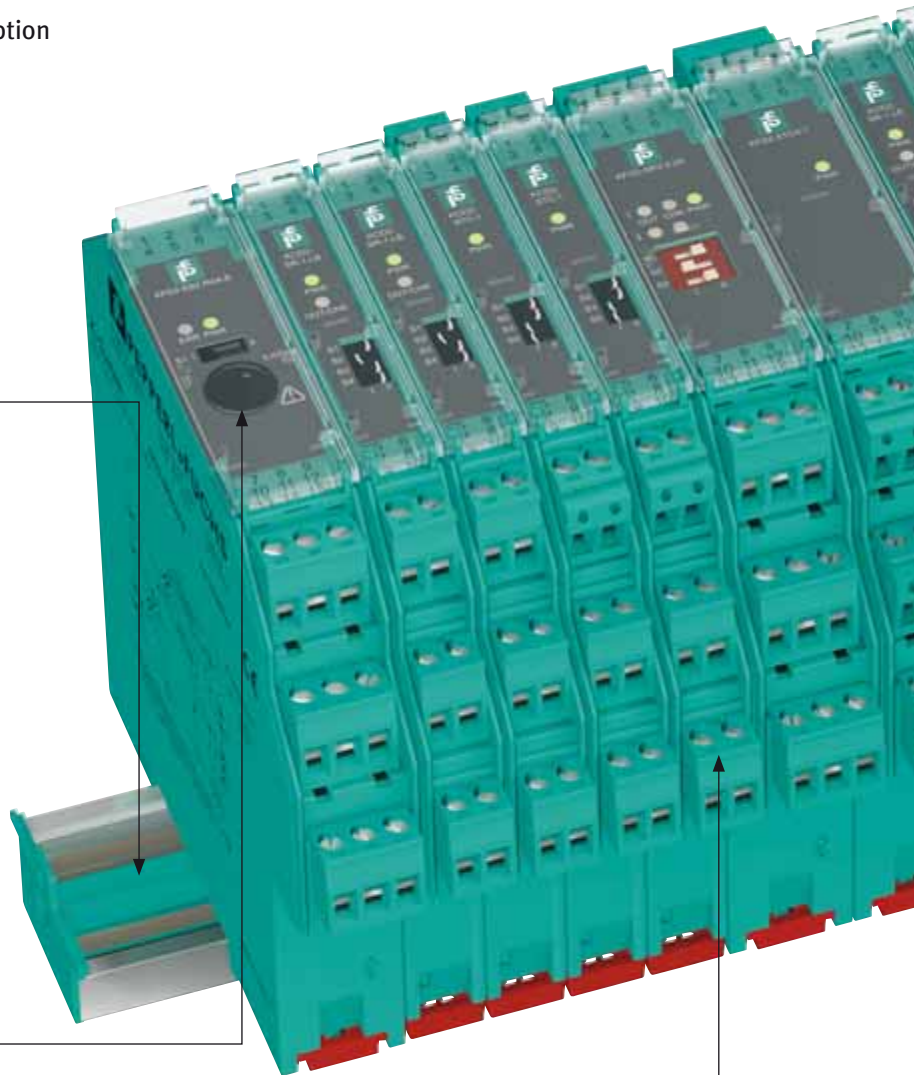
- Simply snaps on to a DIN mounting rail with integrated power rail insert
- Power supply and field loop mounting via power rail
- Simple expansion and replacement during operation
- Reduced I/O-wiring due to collective error message
- Vertical and horizontal mounting

## REDUNDANT POWER SUPPLY

- Simple and redundant power supply via power feed module or power supply
- Group protection
- Alarm signal for line or power fault
- Reduced power supply wiring

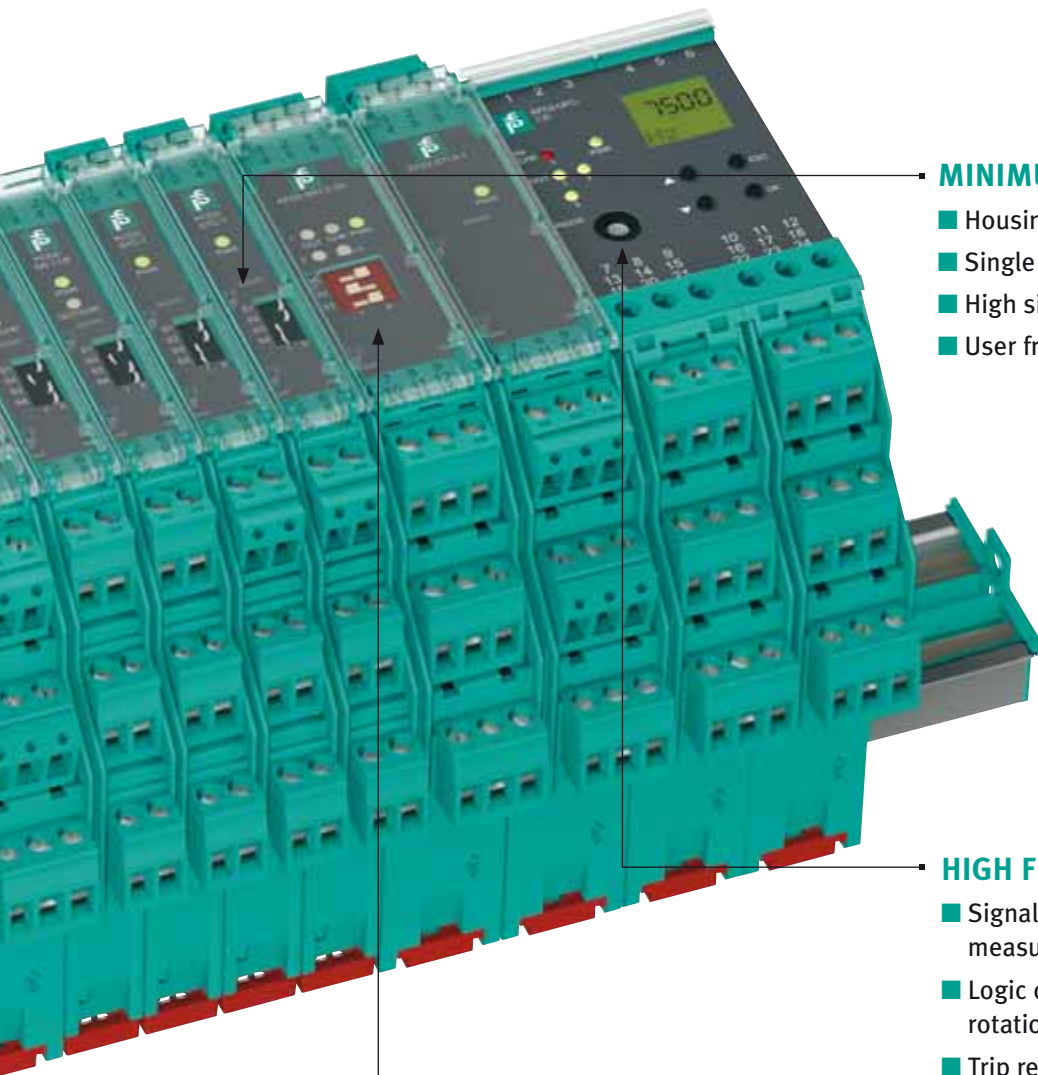
## QUICK WIRING

- Removable terminals
- Up to 2.5 mm/14 AWG cabling
- Terminal coding means no incorrect connection
- Terminal blocks with test points for HART-handhelds



# K-SYSTEM: SIGNAL CONDITIONERS FOR EVERY APPLICATION

One main function of signal conditioners is to prevent the effects of interference voltage and current through the use of galvanic isolation. Thus, grounding problems of wide network signal cables are eliminated. A very common application of signal conditioners is the conversion of sensor signals into standard signals. Signal converters also convert frequency signals into one of many standard signals.



## MINIMUM CABINET SPACE

- Housing width only 12.5 mm
- Single channel modules
- High signal integrity
- User friendly front side switches

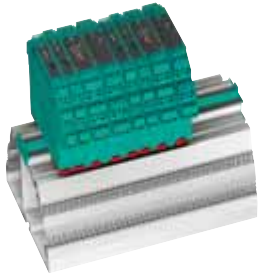
## HIGH FUNCTIONALITY

- Signal converters for temperature signals, measuring bridges and transmitters
- Logic control units determine and monitor the rotational speed and direction, and slip
- Trip relay integrated
- Configurable with pushbuttons and display or free of charge software (FDT-DTM)

## MAXIMUM CHANNEL NUMBER

- Signal conditioners with high packing density
- Multichannel signal converters, transmitter power supplies and switch amplifiers
- Quick configuration with front side dip switches

Accessories are important for the success of a system and for the success of your installation. Appropriate power supplies, surge protection barriers, HART multiplexer and versatile commissioning tools make the K-System a well-rounded solution.



## DEVICE MOUNTING

- 35 mm DIN mounting rail with power rail
- Cable-duct with integrated mounting rail and power rail for even more space saving



## POWER SUPPLY

- Power rail compatible space-saving power supplies
- Power rail supply modules
- Simple and redundant power supply possible
- 4 A power supply for larger installations



## SURGE PROTECTION BARRIERS

- Reduced wiring with clip-on versions
- Screw versions for field devices available
- Universal barriers for mounting rails available
- Protects field devices and control cabinet installation with extremely fast responsiveness



## HART MULTIPLEXER

- For communication of up to 7936 field devices
- Capacitive galvanic isolation between channels
- Can be used to SIL3
- Termination boards and connection cables available
- Low space requirements and power consumption

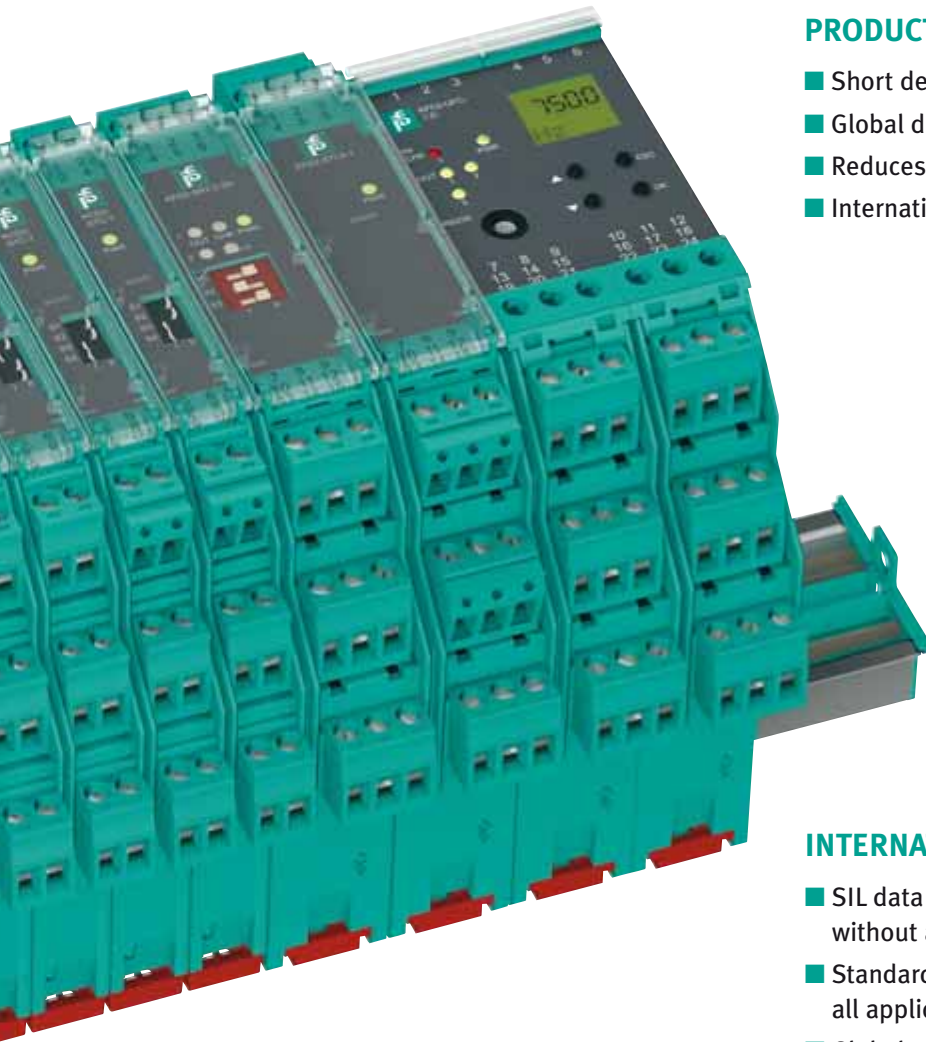


## COMMISSIONING

- Cage spring terminal blocks
- Free of charge software FDT-DTM
- Programming adaptors
- Simulators

# K-SYSTEM: RELIABLE AND ECONOMICAL

From planning to utilization, our K-System is impressive in both reliability and cost savings at the field device and the control system. From an individual module to a complete system solution, the flexible installation is a great feature of our K-System.



## PRODUCT AVAILABILITY

- Short delivery times
- Global distribution
- Reduces your inventory
- International technical support

## INTERNATIONAL SAFETY STANDARDS

- SIL data is available for systems and processes without additional charge.
- Standardized documentation: one set of models for all applications
- Global certification
- International support

**SIL**  
IEC61508

## SIMPLE CONFIGURATION

- Display for reading measured values
- Configuration via pushbuttons or software
- Powerful software configuration tool:  
FDT-DTM



## ANALYSIS AND DIAGNOSIS

- HART Signal transfer
- Field device parameter transfer
- Error detection / Analysis and diagnosis
- Preventative maintenance requirement



# PROCESS AUTOMATION – PROTECTING YOUR PROCESS



For over a half century, Pepperl+Fuchs has been continually providing new concepts for the world of process automation. Our company sets standards in quality and innovative technology. We develop, produce and distribute electronic interface modules, Human-Machine Interfaces and hazardous location protection equipment on a global scale, meeting the most demanding needs of industry. Resulting from our world-wide presence and our high flexibility in production and customer service, we are able to individually offer complete solutions – wherever and whenever you need us. We are the recognized experts in our technologies – Pepperl+Fuchs has earned a strong reputation by supplying the world's largest process industry companies with the broadest line of proven components for a diverse range of applications.

## 1 Worldwide/German Headquarters

Pepperl+Fuchs GmbH  
Mannheim · Germany  
Tel. +49 621 776 2222  
E-Mail: [pa-info@de.pepperl-fuchs.com](mailto:pa-info@de.pepperl-fuchs.com)

## 2 Asia Pacific Headquarters

Pepperl+Fuchs PTE Ltd.  
Singapore  
Company Registration No. 199003130E  
Tel. +65 6779 9091  
E-Mail: [pa-info@sg.pepperl-fuchs.com](mailto:pa-info@sg.pepperl-fuchs.com)

## 3 Western Europe & Africa Headquarters

Pepperl+Fuchs N.V.  
Schoten/Antwerp · Belgium  
Tel. +32 3 6442500  
E-Mail: [pa-info@be.pepperl-fuchs.com](mailto:pa-info@be.pepperl-fuchs.com)

## 4 Middle East/India Headquarters

Pepperl+Fuchs M.E (FZE)  
Dubai · UAE  
Tel. +971 4 883 8378  
E-mail: [pa-info@ae.pepperl-fuchs.com](mailto:pa-info@ae.pepperl-fuchs.com)

## 5 North/Central America Headquarters

Pepperl+Fuchs Inc.  
Twinsburg · Ohio · USA  
Tel. +1 330 486 0002  
E-Mail: [pa-info@us.pepperl-fuchs.com](mailto:pa-info@us.pepperl-fuchs.com)

## 6 Northern Europe Headquarters

Pepperl+Fuchs GB Ltd.  
Oldham · England  
Tel. +44 161 6336431  
E-Mail: [pa-info@gb.pepperl-fuchs.com](mailto:pa-info@gb.pepperl-fuchs.com)

## 7 Southern/Eastern Europe Headquarters

Pepperl+Fuchs Elcon srl  
Sulbiate · Italy  
Tel. +39 039 62921  
E-Mail: [pa-info@it.pepperl-fuchs.com](mailto:pa-info@it.pepperl-fuchs.com)

## 8 Southern America Headquarters

Pepperl+Fuchs Ltda.  
São Bernardo do Campo · SP · Brazil  
Tel. +55 11 4341 8448  
E-Mail: [pa-info@br.pepperl-fuchs.com](mailto:pa-info@br.pepperl-fuchs.com)

[www.pepperl-fuchs.com](http://www.pepperl-fuchs.com)

 **PEPPERL+FUCHS**  
PROTECTING YOUR PROCESS