

THE MEASURING PHOTOELECTRIC SENSOR

RL31-8-H-800-RT-IO



FLEXIBLE COST SAVER: MEASURING PHOTOELECTRIC SENSOR

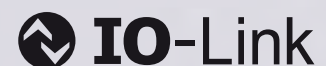
- Triangulation measurement sensor with discrete output bridges the gap between distance sensors and photoelectric sensors
- Integral measuring principle enables various switching functionality in one device
- Optimally adapts to the application using IO-Link parameterization
- Selectable switching functionality:
 - Background suppression
 - Background evaluation
 - Window operating mode (background and foreground suppression)
 - Hysteresis mode

RELIABLE DETECTION: FOR ALL OBJECTS

- Large adjustment range can be precisely defined and low sensitivity to target color enable flexible adaptation to your application
- Reliable object detection, even with dark object surfaces without compromising accuracy or repeatability

COMMUNICATION SKILLS: IO-LINK INCLUDED

- Standard IO-Link interface for diagnosis and parameterization tasks
- Economical and efficient interface for off-line and in-line communication
- Standard connection – existing wiring does not need to be changed for this purpose



BEST AVAILABLE LIGHT: POWERBEAM

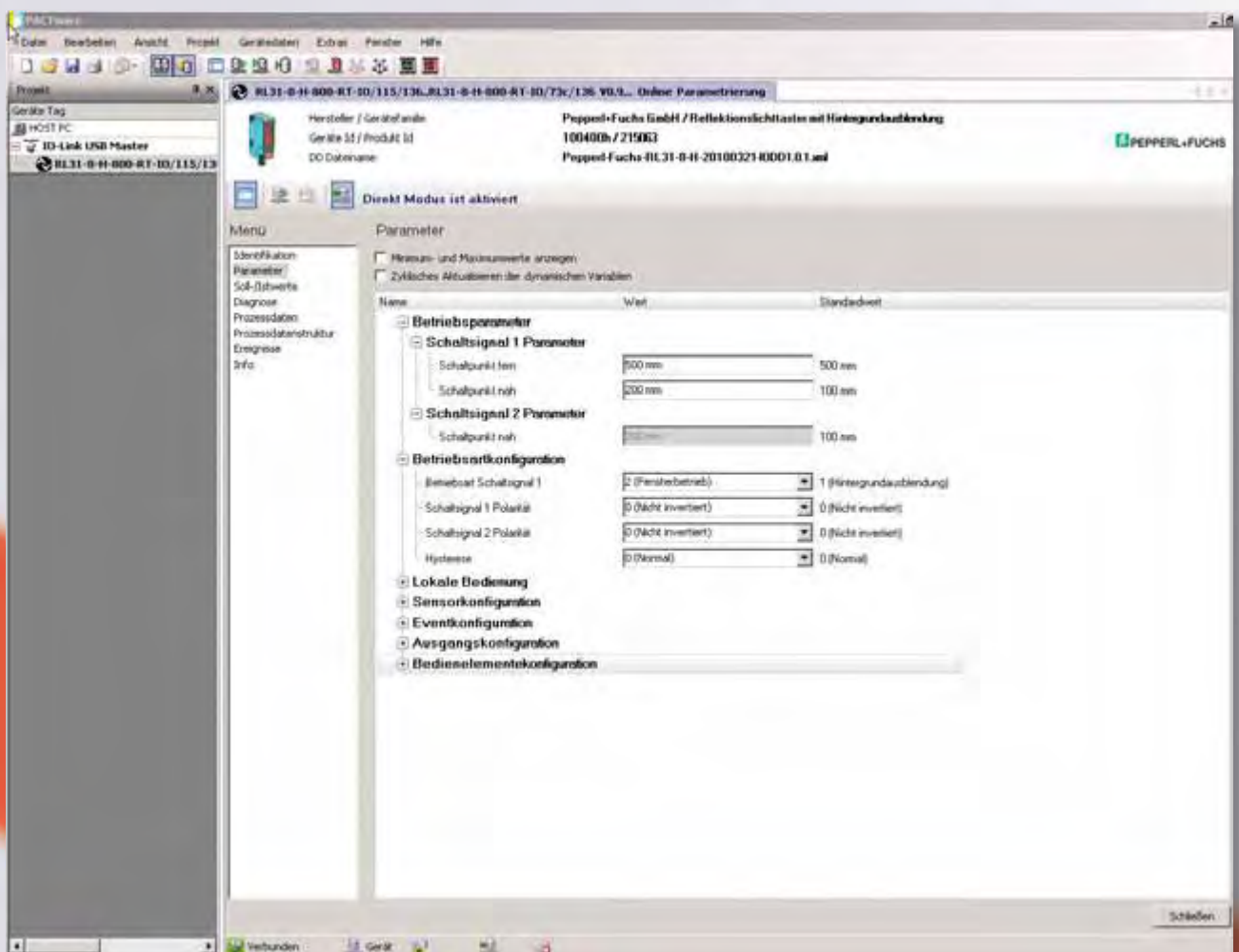
- Best visibility due to extremely bright transmitter LED
- Simple alignment and commissioning over the whole detection range
- Use of the latest LED technology: PowerBeam
- Uniform light spot, excellent visibility, no central bond spot



FLEXIBLE AND ADAPTABLE TO YOUR APPLICATION

WINDOW OPERATING MODE (BACKGROUND AND FOREGROUND SUPPRESSION)

- Detection of objects irrespective of type and color in a defined sensing range. Reliable detection when leaving the defined sensing range – Applications: e.g. web break monitoring



GENERAL FEATURES

- Diffuse mode sensor with 4 adjustable operating modes
- Large adjustable sensing range up to 800 mm
- Dual push-pull output
- Simple operating concept
- Flexible mounting options with hex retainers
- Versatile mounting set available
- Highly visible status LEDs

BACKGROUND SUPPRESSION OPERATING MODE

Betriebsartkonfiguration			
Betriebsart Schaltsignal 1	1 (Hintergrundausblendung)	1 (Hintergrundausblendung)	
Schaltsignal 1 Polarität	0 (Nicht invertiert)	0 (Nicht invertiert)	
Schaltsignal 2 Polarität	0 (Nicht invertiert)	0 (Nicht invertiert)	
Hysteresis	0 (Normal)	0 (Normal)	

- Detection of objects irrespective of type and color in a defined sensing range. Objects in the background are reliably suppressed. Applications: e.g. presence checks, triggers, stacking height detection

- Background suppression with 2 switching points. Applications: e.g. tension checks, stroke height monitoring, fill level monitoring, collision avoidance

Active sensing range



Background suppression

BACKGROUND EVALUATION OPERATING MODE

Betriebsartkonfiguration			
Betriebsart Schaltsignal 1	4 (Hintergrundeinsenzung)	1 (Hintergrundausblendung)	
Schaltsignal 1 Polarität	0 (Nicht invertiert)	0 (Nicht invertiert)	
Schaltsignal 2 Polarität	0 (Nicht invertiert)	0 (Nicht invertiert)	
Hysteresis	0 (Normal)	0 (Normal)	

- Detection of objects irrespective of type and color in front of a defined background. Reliable detection of objects at close range (detection range ≥ 0 mm). The background serves as reference. Applications: e.g. presence checks, front edge detection

Active sensing range



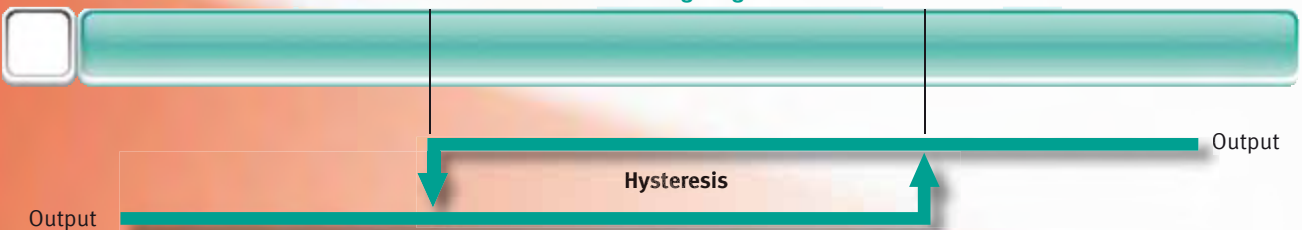
Background evaluation

HYSTERESIS OPERATING MODE

Betriebsartkonfiguration			
Betriebsart Schaltsignal 1	2 (Hysteresisbetrieb)	1 (Hintergrundausblendung)	
Schaltsignal 1 Polarität	0 (Nicht invertiert)	0 (Nicht invertiert)	
Schaltsignal 2 Polarität	0 (Nicht invertiert)	0 (Nicht invertiert)	
Hysteresis	0 (Normal)	0 (Normal)	

- Detection of objects irrespective of type and color between a defined switch-on and switch-off point. Applications: e.g. tension checks, stroke height monitoring, fill level monitoring

Active sensing range



TECHNICAL DATA

Sensing range	50 mm to 800 mm
Adjustment range	100 mm to 800 mm
Reference object	Standard white 100 mm x 100 mm
bw/wb difference	5% at 800 mm
Type of light	Red LED, PowerBeam
Diameter of the light spot	25 mm at 800 mm
Opening angle	±2.0°
Ambient light limit	20,000 Lux
LED indicators	Green: power on, short circuit/undervoltage Yellow: Switching state
Operating controls	Detection range adjustment
Operating voltage	10 V DC to 30 V DC
Operating mode	Light on mode, switchable
Signal output	2 push-pull outputs
Switching frequency	200 Hz
Response time	2.5 ms
Ambient temperature	-30 °C to 50 °C
Degree of protection	IP67
Connection	4-pin, M12 plug or 2 m fixed cable



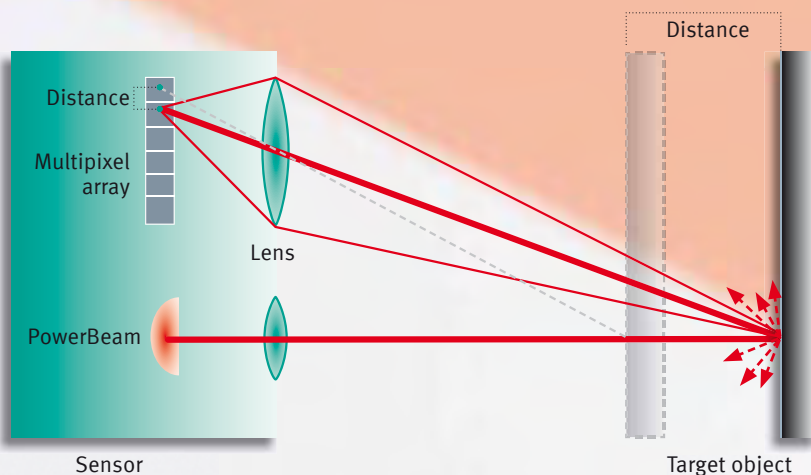
MODEL NUMBER

Designation	Version
RL31-8-H-800-RT-IO/59/73c/136	Version with M12 connecting plug, 4-pin
RL31-8-H-800-RT-IO/59/115/136	Version with fixed cable connection, 2 m

FUNCTIONAL PRINCIPLE

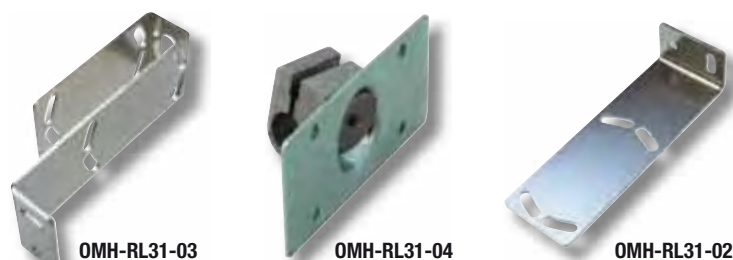
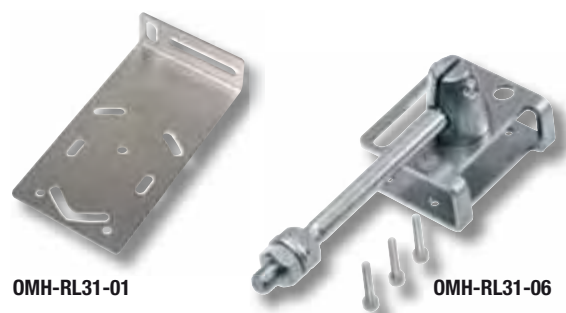
Diffuse mode sensor based on the triangulation principle with measuring functionality:

- Row of photodiodes as receiver
- μ processor and software provide the measuring principle
- IO-Link interface for diagnosis and parameterization
- Distance information accessible via IO-Link



MOUNTING ACCESSORIES

Designation	Description
OMH-RL31-01	Wide, right-angle mounting bracket (galvanized sheet steel)
OMH-RL31-02	Narrow, right-angle mounting bracket (galvanized sheet steel)
OMH-RL31-03	Wrap-around, right-angle mounting bracket (galvanized sheet steel)
OMH-RL31-04	Mounting bracket for circular profiles \varnothing 12 mm or flat profiles 1.5 mm to 3 mm
OMH-RL31-05	Mounting bracket standard wide (stainless steel)
OMH-RL31-06	Mounting bracket on M10 threaded bar with rotating head



CONNECTING CABLE

Designation	Description
V1-G-2M-PVC	Female cordset, straight, M12, 4-pin, PVC cable, length: 2 m
V1-G-2M-PUR	Female cordset, straight, M12, 4-pin, PUR cable, length: 2 m
V1-W-2M-PVC	Female cordset, angled, M12, 4-pin, PVC cable, length: 2 m
V1-W-2M-PUR	Female cordset, angled, M12, 4-pin, PUR cable, length: 2 m

IO-Link

IO-LINK PARAMETERIZATION ACCESSORIES

Designation	Description
IO-Link-Master01-USB	Parameterization tool IO-Link-Master, incl. power supply, USB cable
I0DD	see download area www.pepperl-fuchs.com
PactWare 4.0	see download area www.pepperl-fuchs.com

Further accessories available on request

Contact

Pepperl+Fuchs GmbH
Lilienthalstraße 200
68307 Mannheim · Germany
Tel. +49 621 776-4411 · Fax +49 621 776-27-4411
E-mail: fa-info@pepperl-fuchs.com

Worldwide Headquarters

Pepperl+Fuchs GmbH · Mannheim · Germany
E-mail: fa-info@pepperl-fuchs.com

USA Headquarters

Pepperl+Fuchs Inc. · Twinsburg, OH · USA
E-mail: fa-info@us.pepperl-fuchs.com

Asia Pacific Headquarters

Pepperl+Fuchs Pte Ltd · Singapore
Company Registration No. 199003130E
E-mail: fa-info@sg.pepperl-fuchs.com

www.pepperl-fuchs.com

 **PEPPERL+FUCHS**
SENSING YOUR NEEDS