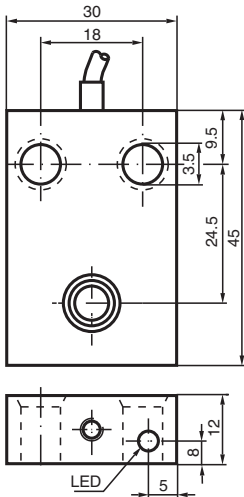


Inductive sensor NJ6-F-A2-3M

- Comfort series
- 6 mm flush
- 4-wire DC



Dimensions



Technical Data

General specifications			
Rated operating distance	s_n		6 mm
Installation			flush
Output polarity			DC
Assured operating distance	s_a		0 ... 4.8 mm
Actual operating distance	s_r		5.4 ... 6.6 mm typ.
Reduction factor r_{Al}			0.22
Reduction factor r_{Cu}			0.2
Reduction factor r_{304}			0.7
Output type			4-wire
Nominal ratings			
Operating voltage	U_B		10 ... 60 V DC
Switching frequency	f		0 ... 500 Hz
Hysteresis	H		0 ... 0.3 typ. 0.1 %
Reverse polarity protection			reverse polarity protected
Short-circuit protection			pulsing
Voltage drop	U_d		≤ 3 V

Release date: 2023-12-08 Date of issue: 2023-12-08 Filename: 037199_eng.pdf

Refer to "General Notes Relating to Pepperl+Fuchs Product Information".

Pepperl+Fuchs Group
www.pepperl-fuchs.com

USA: +1 330 486 0001
fa-info@us.pepperl-fuchs.com

Germany: +49 621 776 1111
fa-info@de.pepperl-fuchs.com

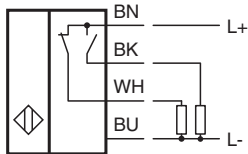
Singapore: +65 6779 9091
fa-info@sg.pepperl-fuchs.com

 PEPPERL+FUCHS

Technical Data

Operating current	I_L	0 ... 200 mA
No-load supply current	I_0	≤ 20 mA
Time delay before availability	t_v	≤ 15 ms
Switching state indicator		LED, yellow
Functional safety related parameters		
MTTF _d		690 a
Mission Time (T _M)		20 a
Diagnostic Coverage (DC)		0 %
Compliance with standards and directives		
Standard conformity		
Standards		EN 60947-5-2:2007 IEC 60947-5-2:2007
Approvals and certificates		
UL approval		cULus Listed, General Purpose
CCC approval		Certified by China Compulsory Certification (CCC)
Ambient conditions		
Ambient temperature		-25 ... 70 °C (-13 ... 158 °F)
Mechanical specifications		
Connection type		cable PUR , 3 m
Core cross section		0.34 mm ²
Housing material		PBT
Sensing face		PBT
Degree of protection		IP67

Connection



Release date: 2023-12-08 Date of issue: 2023-12-08 Filename: 037199_eng.pdf