

Safety light grid with integrated control unit

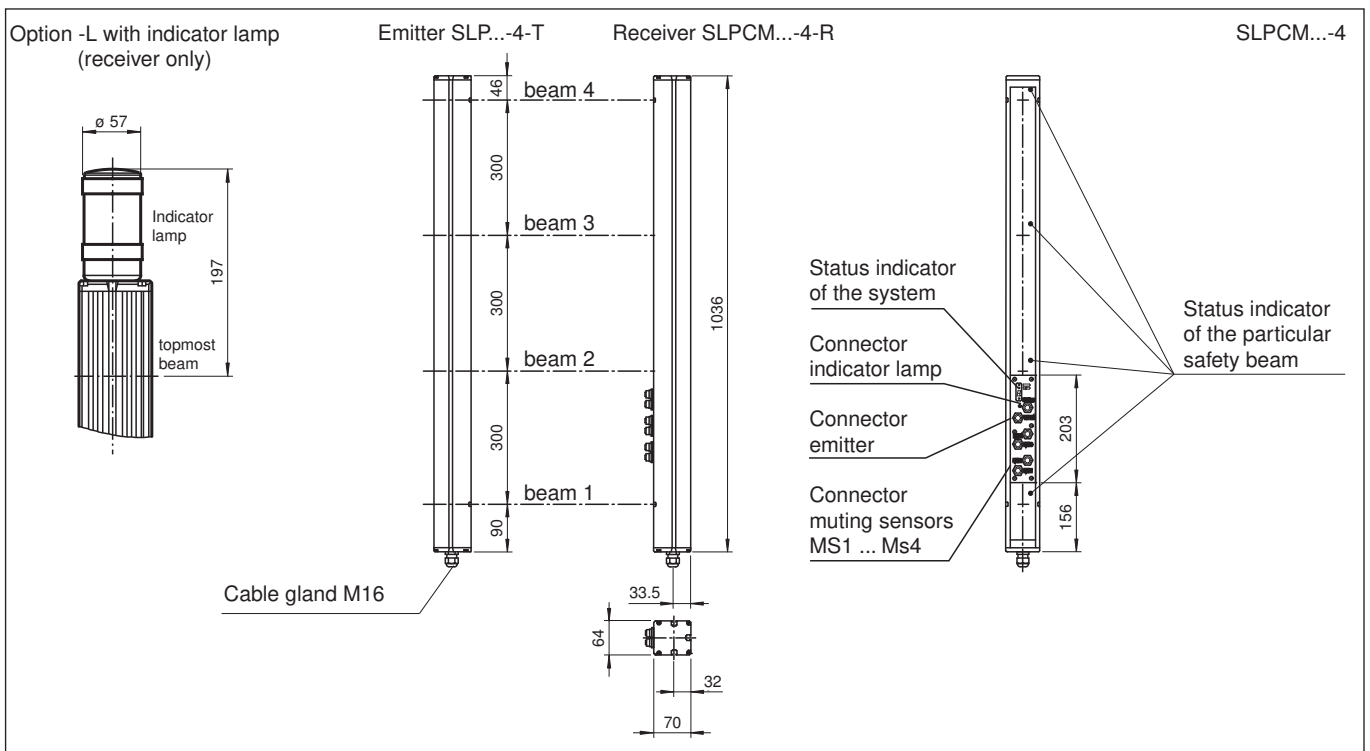


SLPCM10-4-L

- Sensing range up to 10 m
- 4-radial design
- Beam spacing 300 mm
- Self-monitoring (type 4 according to IEC/EN 61496-1)
- Red transmission light
- Usable with or without start/restart disable
- Sequential and parallel muting in various operating modes
- Emergency muting for the correction of the material jam
- Integrated relay monitor
- 7-segment diagnostic display
- Integrated function display
- Pre-fault indication
- OSSD outputs as semiconductor or relay outputs



Dimensions



Technical Data

System components	
Emitter	SLP10-4-T
Receiver	SLPCM10-4-R-L
General specifications	
Effective detection range	0.2 ... 10 m
Light source	LED

Release date: 2020-06-05 Date of issue: 2020-10-06 Filename: 114876_eng.pdf

Refer to "General Notes Relating to Pepperl+Fuchs Product Information".

Pepperl+Fuchs Group
www.pepperl-fuchs.com

USA: +1 330 486 0001
fa-info@us.pepperl-fuchs.com

Germany: +49 621 776 1111
fa-info@de.pepperl-fuchs.com

Singapore: +65 6779 9091
fa-info@sg.pepperl-fuchs.com

PF PEPPERL+FUCHS

Technical Data

Light type		modulated visible red light
Tests		IEC/EN 61496
Safety type according to IEC/EN 61496		4
Marking		CE
Target size		static: 32 mm dynamic: 50 mm (at $v = 1.6$ m/s of the obstacle)
Beam spacing		300 mm
Number of beams		4
Operating mode		Start/restart disable, relay monitor, muting operating modes
Angle of divergence		$< 5^\circ$
Functional safety related parameters		
Performance level (PL)		PL e
Category		Cat. 4
Mission Time (T_M)		20 a
PFH_d		$3.54 E-9$
Type		4
Indicators/operating means		
Diagnostics indicator		7-segment display
Function indicator		LED red: per receiver channel off: interruption flashes: receiver continuously on: reception with sufficient stability control on the front plate: LED red: OSSD off LED green: OSSD on LED yellow: types of muting operation
Muting indicator		Indicator lamp
Pre-fault indicator		LED red next to receiver flashes
Control elements		10 DIP switch in receiver terminal compartment
Electrical specifications		
Operating voltage	U_B	24 V DC -15% / +25%, galvanically isolated
No-load supply current	I_0	max. 250 mA
Protection class		III, IEC 61140
Input		
Activation current		approx. 10 mA
Activation time		0.03 ... 1 s
Test input		Reset-input for system test
Function input		Relay monitor, start release, muting sensors (max. 4)
Output		
Pre-fault indication output		1 PNP, $+U_B - 2$ V, max. 300 mA
Safety output		2 separated fail safe semiconductor outputs
Signal output		1 PNP each, max. 300 mA for startup readiness, OSSD on, OSSD off, muting lamp, signals in parallel in the lamp socket
Switching voltage		Operating voltage -2 V
Switching current		max. 0.5 A
Response time		20 ms
Conformity		
Functional safety		ISO 13849-1
Product standard		EN 61496-1 ; IEC 61496-2
Approvals and certificates		
CE conformity		CE
Approvals		TÜV SÜD
USA		TÜV NRTL mark
Ambient conditions		
Ambient temperature		0 ... 50 °C (32 ... 122 °F)
Storage temperature		-20 ... 70 °C (-4 ... 158 °F)
Relative humidity		max. 95 %, not condensing

Release date: 2020-06-05 Date of issue: 2020-10-06 Filename: 114876_eng.pdf

Refer to "General Notes Relating to Pepperl+Fuchs Product Information".

Pepperl+Fuchs Group
www.pepperl-fuchs.comUSA: +1 330 486 0001
fa-info@us.pepperl-fuchs.comGermany: +49 621 776 1111
fa-info@de.pepperl-fuchs.comSingapore: +65 6779 9091
fa-info@sg.pepperl-fuchs.com

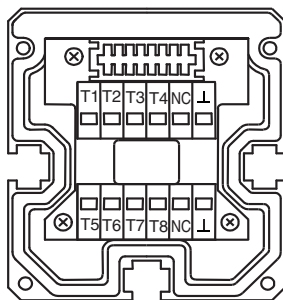
PEPPERL+FUCHS

Technical Data

Mechanical specifications	
Degree of protection	IP65
Connection	M16 cable gland , terminal compartment with cage terminals, M12 connector for transmitters, muting lamp, etc., muting sensors, lamp socket for muting lamp, etc.
Connection options	Further electrical connection options on request: Connector DIN 43 651 Hirschmann, emitter: 6-pin+PE, receiver: 11-pin+PE
Material	
Housing	extruded aluminum profile, RAL 1021 (yellow) coated
Optical face	Plastic pane
Mass	Per 3700 g

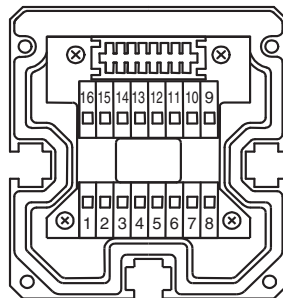
Connection

Emitter SLP



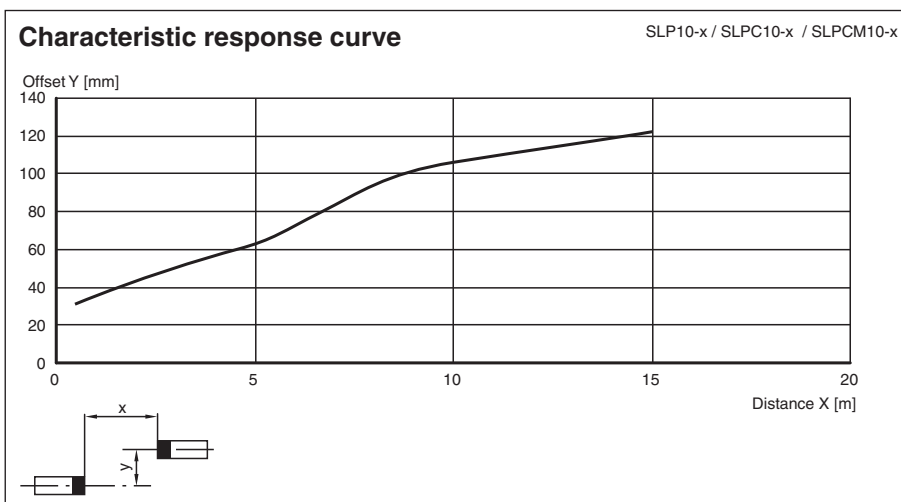
- T1 - Emitter channel 1
- T2 - Emitter channel 2
- T3 - Emitter channel 3
- T4 - Emitter channel 4
- L - 0 V

Receiver SLPCM

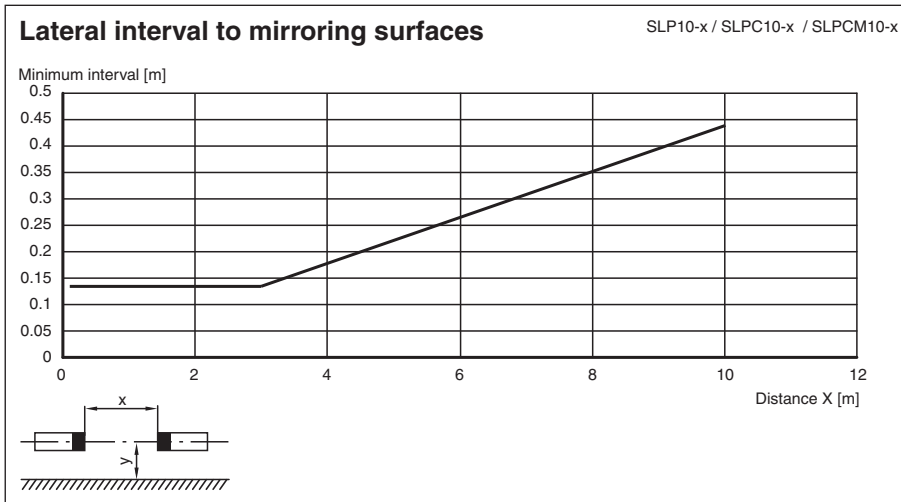
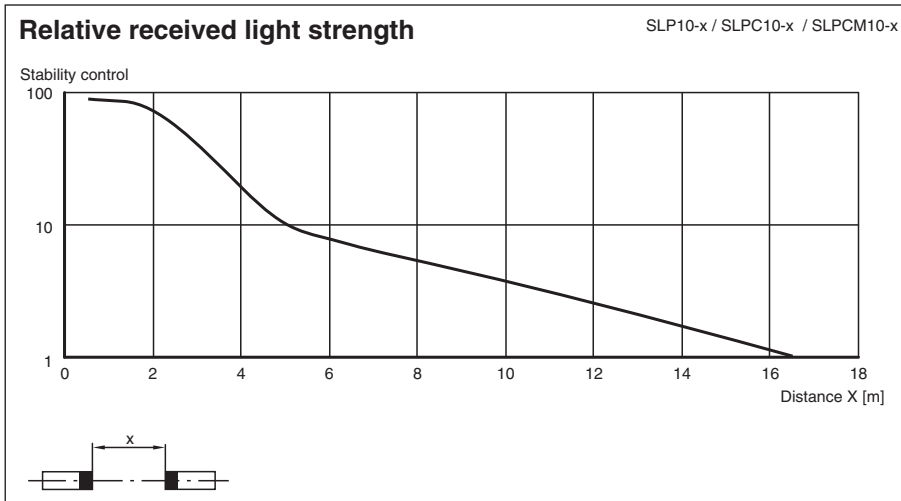


Receiver SLPCM (semiconductor outputs)	Receiver SLPCM/31 (Relay outputs)
	1 - Functional earth 2 - 0 V 3 - 24 V
4 - n.c. 5 - - 6 - + 7 - OSSD 1 8 - OSSD 2	
	4 - Relay contact 5 - Relay contact 6 - Relay contact 7 - Relay contact 8 - Relay contact
	9 - Input, Relay monitor 10 - Input, Start release 11 - Input, Reset 12 - PNP-output, Soiled optics 13 - PNP-output, Muting lamp 14 - PNP-output, Startup readiness 15 - PNP-output, Indicator OSSD OFF 16 - PNP-output, Indicator OSSD ON


Characteristic Curve



Release date: 2020-06-05 Date of issue: 2020-10-06 Filename: 114876_eng.pdf



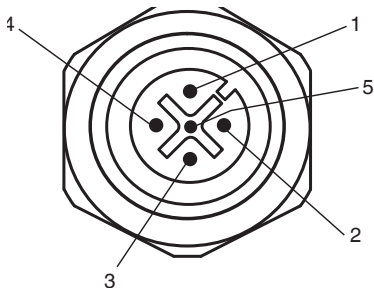
Accessories


	PG SLP-4	Protective glass panes for SLP series
---	-----------------	---------------------------------------

Release date: 2020-06-05 Date of issue: 2020-10-06 Filename: 114876_eng.pdf

Additional information

Socket assignment on the front side of the device



Indicator lamp control 

Socket	Function
1	OSSD on
2	OSSD off
3	0 V
4	Readiness for startup
5	Muting (monitored)

T1 - T4 transmitter control

Socket	Function
1	Transmitter channel 1
2	Transmitter channel 2
3	0 V
4	Transmitter channel 3
5	Transmitter channel 4

Muting sensor inputs MS1 - MS4

Socket	Function
1	+ 24 V
3	0 V
4	Sensor signal

System accessories

- Mounting set MS SLC
- Profile alignment aid PA SLP/SLC
- Laser alignment aid BA SLP
- Ground pillar UC SLP/SLC
- Housing for pillar Enclosure UC SLP/SLC
- Collision protector Damping UC SLP/SLC
- Redirection mirror SLP-4-M