

# Connection cable

## V1-W-A2-50M-PUR-V1-G



- Built-in LED, as operating and function indicator
- Degree of protection IP68 / IP69
- Resistant to microbes and hydrolysis
- Halogen-free
- Specific design protects against loosening and inaccurate installation

Cordset M12 socket angled A-coded LED 4-pin to M12 plug straight A-coded 4-pin, PUR cable grey



### Dimensions



### Technical Data

#### General specifications

|                                   |       |                            |  |
|-----------------------------------|-------|----------------------------|--|
| <b>Connector 1</b>                |       |                            |  |
| Connection                        |       | socket                     |  |
| Construction type                 |       | M12                        |  |
| Style                             |       | angled                     |  |
| Locking                           |       | screw connection           |  |
| Number of pins                    |       | 4                          |  |
| Coding                            |       | A-coded                    |  |
| <b>Connector 2</b>                |       |                            |  |
| Connection                        |       | plug                       |  |
| Construction type                 |       | M12                        |  |
| Style                             |       | straight                   |  |
| Locking                           |       | screw connection           |  |
| Number of pins                    |       | 4                          |  |
| Coding                            |       | A-coded                    |  |
| <b>Indicators/operating means</b> |       |                            |  |
| LED green                         |       | Operating display          |  |
| LED yellow                        |       | Functional display pin 4   |  |
| <b>Electrical specifications</b>  |       |                            |  |
| Operating voltage                 | $U_B$ | max. 24 V DC -20 % / +25 % |  |
| Operating current                 | $I_B$ | max. 4 A                   |  |

Release date: 2024-02-19 Date of issue: 2024-02-19 Filename: 240780-100016\_eng.pdf

Refer to "General Notes Relating to Pepperl+Fuchs Product Information".

Pepperl+Fuchs Group  
www.pepperl-fuchs.com

USA: +1 330 486 0001  
fa-info@us.pepperl-fuchs.com

Germany: +49 621 776 1111  
fa-info@de.pepperl-fuchs.com

Singapore: +65 6779 9091  
fa-info@sg.pepperl-fuchs.com

PEPPERL+FUCHS

## Technical Data

|                                  |   |   |
|----------------------------------|---|---|
| <b>Conformity</b>                |   |   |
| Degree of protection             |   | EN 60529  |
| Plug connection                  |   | connector M12 x 1 : IEC 61076-2-101                             |
| Halogen-free                     |   | IEC 60754-1   |
| <b>Ambient conditions</b>        |   |   |
| Ambient temperature              |   |   |
| Plug connector                   |   | -40 ... 90 °C (-40 ... 194 °F)                                  |
| Cable, fixed                     |   | -40 ... 80 °C (-40 ... 176 °F)                                  |
| Cable, flexing                   |   | -25 ... 80 °C (-13 ... 176 °F)                                  |
| Pollution degree                 |   | 3   |
| <b>Mechanical specifications</b> |   |   |
| Plug connector                   |   |   |
| Tightening torque                |   | 0.6 Nm  |
| Loosening protection             |   | available   |
| Tool installation                |   | straight knurling and hexagon nut SW = 14 mm                    |
| Mating cycles                    |   | min. 100  |
| Degree of protection             |   | IP68 / IP69   |
| Cable                            |   | according to IEC/EN 60228 (DIN VDE 0295) class 5                |
| Sheath diameter                  |   | 4.8 mm  |
| Bending radius                   |   | > 10 x cable diameter, moving<br>> 8 x cable diameter, fixed    |
| Sheath stripping force           |   | max. 60 N / 500 mm  |
| Sheath color                     |   | grey (similar to RAL 7001)                                      |
| Number of cores                  |   | 4   |
| Core cross section               |   | 0.34 mm <sup>2</sup>  |
| Cores color                      |   | Core 1: brown<br>Core 2: white<br>Core 3: blue<br>Core 4: black |
| Core construction                |   | 19 x 0.15 mm Ø  |
| Length                           | L | 50 m  |
| Cable code                       |   | Li 9Y 11YM 4 x 0.34   |
| <b>Drag chain suitability</b>    |   |   |
| Drag chain cycles                |   | max. 50 / day   |
| Motion velocity                  |   | max. 0.3 m/s  |
| <b>Material</b>                  |   |   |
| Halogen-free                     |   | yes   |
| Plug connector                   |   |   |
| Screw connection                 |   | Zinc diecast, nickel-plated                                     |
| Body                             |   | TPU, transparent/black  |
| Seal                             |   | FKM   |
| Contact surface                  |   | gold plated (Au)  |
| Flammability                     |   | V-2   |
| Cable                            |   |   |
| Sheathing                        |   | PUR based on polyether  |
| Core insulation                  |   | PP  |
| Chemical resistance              |   | good  |
| Microbial resistance             |   | yes   |
| Hydrolysis resistance            |   | yes   |

Release date: 2024-02-19 Date of issue: 2024-02-19 Filename: 240780-100016\_eng.pdf

Refer to "General Notes Relating to Pepperl+Fuchs Product Information".

Pepperl+Fuchs Group  
www.pepperl-fuchs.com

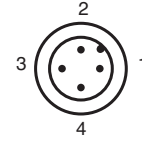
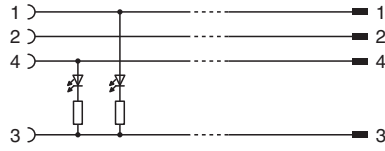
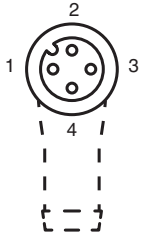
USA: +1 330 486 0001  
fa-info@us.pepperl-fuchs.com

Germany: +49 621 776 1111  
fa-info@de.pepperl-fuchs.com

Singapore: +65 6779 9091  
fa-info@sg.pepperl-fuchs.com

 **PEPPERL+FUCHS**

## Connection



Release date: 2024-02-19 Date of issue: 2024-02-19 Filename: 240780-100016\_eng.pdf