

# Inductive sensor

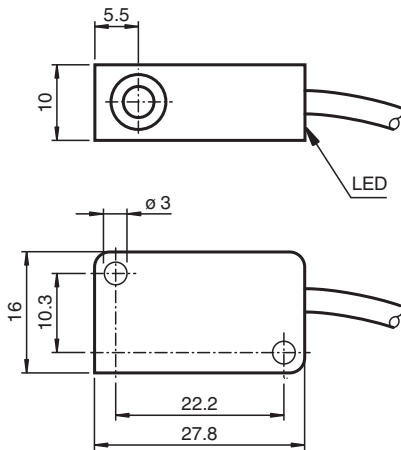
## NBB2-V3-E2 100pcs packing unit



- Basic series
- 2 mm flush
- 3-wire DC



### Dimensions



### Technical Data

General specifications			
Rated operating distance	$s_n$		2 mm
Installation			flush
Output polarity			DC
Assured operating distance	$s_a$		0 ... 1.62 mm
Reduction factor $r_{Al}$			0.35
Reduction factor $r_{Cu}$			0.2
Reduction factor $r_{304}$			0.7
Output type			3-wire
Nominal ratings			
Operating voltage	$U_B$		10 ... 30 V DC
Switching frequency	$f$		0 ... 1000 Hz
Reverse polarity protection			reverse polarity protected
Short-circuit protection			pulsing
Voltage drop	$U_d$		$\leq 3$ V
Operating current	$I_L$		0 ... 100 mA
Off-state current	$I_r$		0 ... 0.5 mA typ. 0.1 $\mu$ A at 25 °C

Release date: 2024-04-12 Date of issue: 2024-04-12 Filename: 243262\_eng.pdf

Refer to "General Notes Relating to Pepperl+Fuchs Product Information".

Pepperl+Fuchs Group  
www.pepperl-fuchs.com

USA: +1 330 486 0001  
fa-info@us.pepperl-fuchs.com

Germany: +49 621 776 1111  
fa-info@de.pepperl-fuchs.com

Singapore: +65 6779 9091  
fa-info@sg.pepperl-fuchs.com

 PEPPERL+FUCHS

## Technical Data

No-load supply current	$I_0$	$\leq 15 \text{ mA}$
Switching state indicator		LED, yellow
<b>Functional safety related parameters</b>		
MTTF <sub>d</sub>		3560 a
Mission Time (T <sub>M</sub> )		20 a
Diagnostic Coverage (DC)		0 %
<b>Compliance with standards and directives</b>		
Standard conformity		
Standards		EN 60947-5-2:2007 IEC 60947-5-2:2007
<b>Approvals and certificates</b>		
UL approval		cULus Listed, General Purpose
CCC approval		CCC approval / marking not required for products rated $\leq 36 \text{ V}$
<b>Ambient conditions</b>		
Ambient temperature		-25 ... 70 °C (-13 ... 158 °F)
<b>Mechanical specifications</b>		
Connection type		cable PVC , 130 mm
Core cross section		0.14 mm <sup>2</sup>
Housing material		PBT
Sensing face		PBT
Degree of protection		IP67
Tightening torque, fastening screws		$\leq 0.4 \text{ Nm}$
Dimensions		
Height		10.2 mm
Width		27.8 mm
Length		16 mm

## Connection

