



## Inductive sensor NRB20-U1-E2-IO

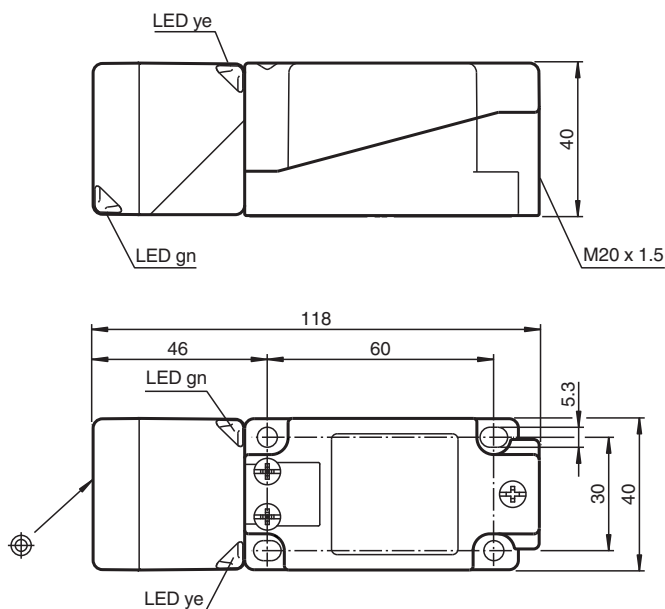
- 20 mm flush
- Reduction factor = 1
- Magnetic field resistant
- IO-Link interface for service and process data
- Switch point mode or window mode can be set
- Switching function, stability alarm and pulse extension can be set
- 4-way LED indicator
- Quick mounting bracket



### Function

Reduction factor 1 sensors reliably detect different metals with the same switch state. The integrated IO-Link interface enables clear identification of the sensor and diagnosis of the sensor condition. When using the sensor, parameters and operating modes can be optimally configured specifically for the intended application. In addition to setting the switching function and a pulse extension, the user can select either switch point mode or window mode in combination with a stability alarm. In switch point mode, the stability alarm signals the detection of an object in the area between the assured operating distance and operating distance sn. In window mode, it signals the detection of an object below the window between operating distance sn and the nearest operating distance. A stability alarm is displayed to the user via a flashing LED and process data.

### Dimensions



### Technical Data

#### General specifications

|                    |   |
|--------------------|---|
| Switching function | Normally open/closed (NO/NC) programmable |
| Output type        | PNP                                       |

Release date: 2022-06-30 Date of issue: 2022-06-30 Filename: 306534-0005\_eng.pdf

Refer to "General Notes Relating to Pepperl+Fuchs Product Information".

Pepperl+Fuchs Group  
www.pepperl-fuchs.com

USA: +1 330 486 0001  
fa-info@us.pepperl-fuchs.com

Germany: +49 621 776 1111  
fa-info@de.pepperl-fuchs.com

Singapore: +65 6779 9091  
fa-info@sg.pepperl-fuchs.com

PEPPERL+FUCHS

## Technical Data

|   |           |   |
|---|-----------|---|
| Rated operating distance                        | $s_n$     | 20 mm (factory setting)   |
| Near operating distance                         |           | 15 mm (can be activated by software)  |
| Installation                                    |           | flush   |
| Output polarity                                 |           | DC  |
| Assured operating distance                      | $s_a$     | 0 ... 16.2 mm   |
| Reduction factor $r_{AI}$                       |           | 1   |
| Reduction factor $r_{Cu}$                       |           | 1   |
| Reduction factor $r_{304}$                      |           | 1   |
| Reduction factor $r_{Si37}$                     |           | 1   |
| Output type                                     |           | 3-wire  |
| <b>Nominal ratings</b>                          |           |   |
| Operating voltage                               | $U_B$     | 10 ... 30 V DC  |
| Switching frequency                             | $f$       | 0 ... 440 Hz (switch point mode)<br>0 ... 10 Hz (window mode, switch point mode with stability alarm) |
| Hysteresis                                      | $H$       | typ. 3 %  |
| Reverse polarity protection                     |           | reverse polarity protected  |
| Short-circuit protection                        |           | pulsing   |
| Voltage drop                                    | $U_d$     | $\leq 0.5$ V  |
| Operating current                               | $I_L$     | 0 ... 200 mA  |
| Off-state current                               | $I_r$     | 0 ... 0.5 mA typ. 60 $\mu$ A at 25 °C   |
| No-load supply current                          | $I_o$     | $\leq 20$ mA  |
| Time delay before availability                  | $t_v$     | max. 150 ms   |
| Constant magnetic field                         | $B$       | 200 mT  |
| Alternating magnetic field                      | $B$       | 200 mT  |
| Operating voltage indicator                     |           | LED, green  |
| Status indicator                                |           | LED, yellow   |
| <b>Functional safety related parameters</b>     |           |   |
| MTTF <sub>d</sub>                               |           | 701 a   |
| Mission Time ( $T_M$ )                          |           | 20 a  |
| Diagnostic Coverage (DC)                        |           | 0 %   |
| <b>Interface</b>                                |           |   |
| Interface type                                  |           | IO-Link ( via C/Q = terminal 4 )  |
| IO-Link revision                                |           | 1.1   |
| Device ID                                       |           | 0x201005 (2101253)  |
| Transfer rate                                   |           | COM2 (38.4 kBit/s)  |
| Min. cycle time                                 |           | 2.3 ms  |
| Process data width                              |           | Process data input (control system side): 2 Bit<br>Process data output (control system side): none    |
| SIO mode support                                |           | yes   |
| Compatible master port type                     |           | A   |
| <b>Compliance with standards and directives</b> |           |   |
| Standard conformity                             |           |   |
| Standards                                       |           | EN 60947-5-2:2007<br>EN 60947-5-2/A1:2012<br>IEC 60947-5-2:2007<br>IEC 60947-5-2 AMD 1:2012           |
| <b>Approvals and certificates</b>               |           |   |
| Protection class                                |           | II  |
| Rated insulation voltage                        | $U_i$     | 60 V  |
| Rated impulse withstand voltage                 | $U_{imp}$ | 800 V   |
| UL approval                                     |           | cULus Listed, General Purpose<br>Class 2 power source   |
| CCC approval                                    |           | CCC approval / marking not required for products rated $\leq 36$ V                                    |
| <b>Ambient conditions</b>                       |           |   |
| Ambient temperature                             |           | -25 ... 70 °C (-13 ... 158 °F)  |

Release date: 2022-06-30 Date of issue: 2022-06-30 Filename: 306534-0005\_eng.pdf

Refer to "General Notes Relating to Pepperl+Fuchs Product Information".

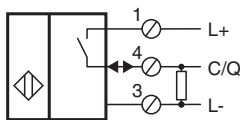
Pepperl+Fuchs Group  
www.pepperl-fuchs.comUSA: +1 330 486 0001  
fa-info@us.pepperl-fuchs.comGermany: +49 621 776 1111  
fa-info@de.pepperl-fuchs.comSingapore: +65 6779 9091  
fa-info@sg.pepperl-fuchs.com

**PEPPERL+FUCHS**

## Technical Data

|                                  |  |
|----------------------------------|--|
| Storage temperature              | -40 ... 85 °C (-40 ... 185 °F)   |
| <b>Mechanical specifications</b> |  |
| Connection type                  | screw terminals  |
| Information for connection       | A maximum of two conductors with the same core cross section may be mounted on one terminal connection!<br>tightening torque 1.2 Nm + 10 % |
| Core cross section               | up to 2.5 mm <sup>2</sup>  |
| Minimum core cross-section       | without wire end ferrule 0.5 mm <sup>2</sup> , with connector sleeves 0.34 mm <sup>2</sup>   |
| Maximum core cross-section       | without wire end ferrule 2.5 mm <sup>2</sup> , with connector sleeves 1.5 mm <sup>2</sup>  |
| Housing material                 | PA/metal with epoxy powder coating   |
| Sensing face                     | PA   |
| Housing base                     | plastic  |
| Degree of protection             | IP67   |
| Mass                             | 275 g  |
| Note                             | Tightening torque: 1.8 Nm (housing)  |
| <b>Factory settings</b>          |  |
| Default setting                  | operating mode = switch point mode with stability alarm<br>switching function = Normally open (NO)<br>switching distance = 20 mm           |

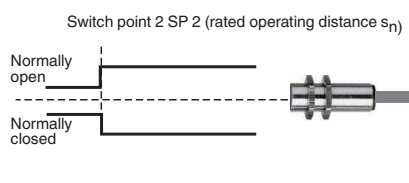
## Connection



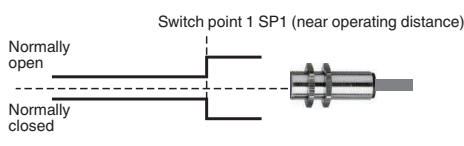
## Function Principle

### Switching output modes

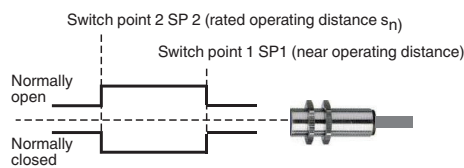
#### Switch point mode at rated operating distance $s_n$



#### Switch point mode with near operating distance



#### Window mode

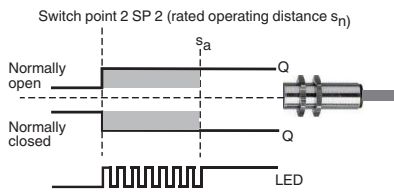


Release date: 2022-06-30 Date of issue: 2022-06-30 Filename: 306534-0005\_eng.pdf

## Function Principle

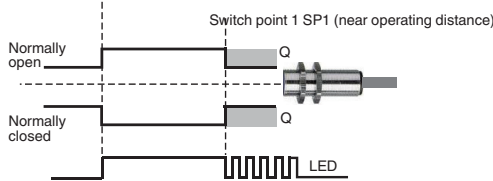
### Stability alarm

Switch point mode with stability alarm (factory default)



### Window mode with stability alarm

Switch point 2 SP 2 (rated operating distance  $s_n$ )



## Accessories

|  |                             |  |
|--|-----------------------------|--|
|  | <b>V1-M20-80</b>            | Receptacles, M12/M20; plastic version  |
|  | <b>MHW 01</b>               | Modular mounting bracket   |
|  | <b>MH 04-2681F</b>          | Mounting aid for VariKont, +U1+ and +U9*   |
|  | <b>ICE2-8IOL-G65L-V1D</b>   | EtherNet/IP IO-Link master with 8 inputs/outputs   |
|  | <b>ICE3-8IOL-G65L-V1D</b>   | PROFINET IO IO-Link master with 8 inputs/outputs   |
|  | <b>ICE2-8IOL-K45S-RJ45</b>  | EtherNet/IP IO-Link master with 8 inputs/outputs, DIN rail, screw terminal                                   |
|  | <b>ICE3-8IOL-K45P-RJ45</b>  | PROFINET IO IO-Link master with 8 inputs/outputs, DIN rail, push-in terminals                                |
|  | <b>ICE3-8IOL-K45S-RJ45</b>  | PROFINET IO IO-Link master with 8 inputs/outputs, DIN rail, screw terminal                                   |
|  | <b>IO-Link-Master02-USB</b> | IO-Link master, supply via USB port or separate power supply, LED indicators, M12 plug for sensor connection |
|  | <b>ICE1-8IOL-G30L-V1D</b>   | Ethernet IO-Link module with 8 inputs/outputs  |
|  | <b>ICE1-8IOL-G60L-V1D</b>   | Ethernet IO-Link module with 8 inputs/outputs  |

Release date: 2022-06-30 Date of issue: 2022-06-30 Filename: 306534-0005\_eng.pdf

Refer to "General Notes Relating to Pepperl+Fuchs Product Information".

Pepperl+Fuchs Group  
www.pepperl-fuchs.com

USA: +1 330 486 0001  
fa-info@us.pepperl-fuchs.com

Germany: +49 621 776 1111  
fa-info@de.pepperl-fuchs.com

Singapore: +65 6779 9091  
fa-info@sg.pepperl-fuchs.com

## Accessories



**ICE2-8IOL-K45P-RJ45**

EtherNet/IP IO-Link master with 8 inputs/outputs, DIN rail, push-in connectors

Release date: 2022-06-30 Date of issue: 2022-06-30 Filename: 306534-0005\_eng.pdf

Refer to "General Notes Relating to Pepperl+Fuchs Product Information".

Pepperl+Fuchs Group  
www.pepperl-fuchs.com

USA: +1 330 486 0001  
fa-info@us.pepperl-fuchs.com

Germany: +49 621 776 1111  
fa-info@de.pepperl-fuchs.com

Singapore: +65 6779 9091  
fa-info@sg.pepperl-fuchs.com

 **PEPPERL+FUCHS**