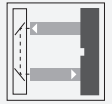


Safety light grid

SLP8-2-A-L

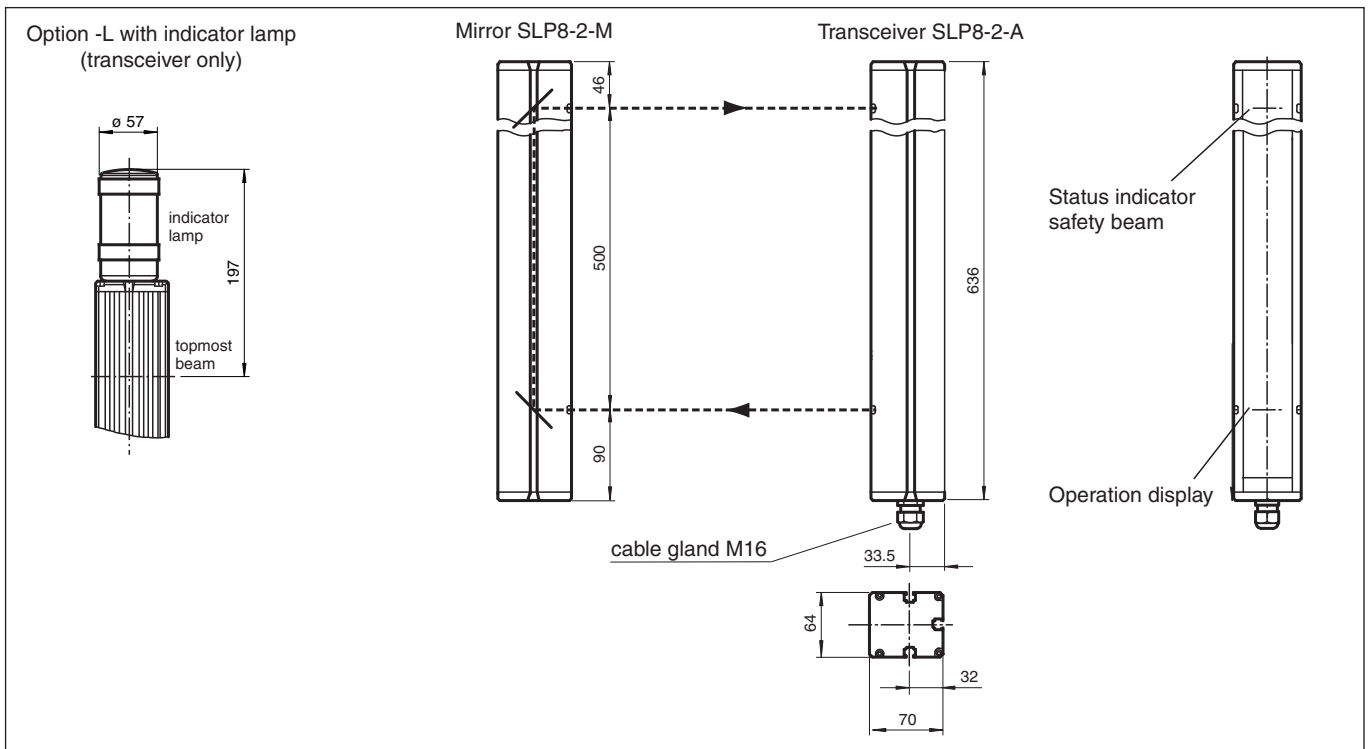
- Sensing range 8 m
- Self-monitoring (type 4 according to IEC/EN 61496-1)
- 2-radial design
- Beam spacing 500 mm
- Red transmission light
- Integrated function display
- Pre-fault indication
- Operation on control units of SB4 (SafeBox)



Safety light grid, active column



Dimensions



Technical Data

System components	
Transceiver	SLP8-2-A
Mirror pillar	SLP8-2-M
General specifications	
Effective detection range	0.2 ... 8 m
Light source	LED
Light type	modulated visible red light
Tests	IEC/EN 61496
Safety type according to IEC/EN 61496	4
Marking	CE

Release date: 2020-08-27 Date of issue: 2020-10-06 Filename: 417786_eng.pdf

Refer to "General Notes Relating to Pepperl+Fuchs Product Information".

Pepperl+Fuchs Group
www.pepperl-fuchs.com

USA: +1 330 486 0001
fa-info@us.pepperl-fuchs.com

Germany: +49 621 776 1111
fa-info@de.pepperl-fuchs.com

Singapore: +65 6779 9091
fa-info@sg.pepperl-fuchs.com

PF PEPPERL+FUCHS

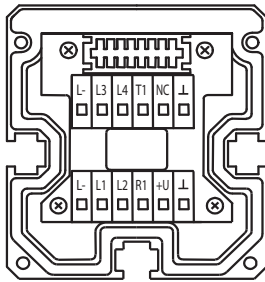
Technical Data

Target size		static: 32 mm dynamic: 50 mm (at v = 1.6 m/s of the obstacle)
Beam spacing		500 mm
Number of beams		2
Angle of divergence		< 5 °
Functional safety related parameters		
Performance level (PL)		PL e
Category		Cat. 4
Mission Time (T _M)		20 a
PFH _d		2.81 E-9
Type		4
Indicators/operating means		
Operation indicator		LED red in transceiver
Function indicator		LED red: per receiver channel off: Interruption flashes: receiver continuously on: reception with sufficient stability control
Muting indicator		Indicator lamp
Pre-fault indicator		Functional display flashing
Electrical specifications		
Operating voltage	U _B	Power supply via control unit
Protection class		III , IEC 61140
Conformity		
Functional safety		ISO 13849-1
Product standard		EN 61496-1 ; IEC 61496-2
Approvals and certificates		
CE conformity		CE
Approvals		TÜV SÜD
Ambient conditions		
Ambient temperature		-20 ... 60 °C (-4 ... 140 °F)
Storage temperature		-20 ... 70 °C (-4 ... 158 °F)
Relative humidity		max. 95 %, not condensing
Mechanical specifications		
Degree of protection		IP65
Connection		M16 cable gland , terminal compartment
Connection options		Further electrical connection options on request: Connector DIN 43 651 Hirschmann, emitter: 6-pin+PE, receiver: 11-pin+PE
Material		
Housing		extruded aluminum profile, RAL 1021 (yellow) coated
Optical face		Plastic pane
Mass		Per 2100 g

Release date: 2020-08-27 Date of issue: 2020-10-06 Filename: 417786_eng.pdf

Connection

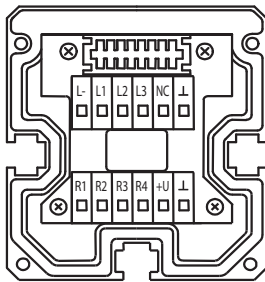
SLP8-2-A-L



- Connecting cable 1
- ⊥ 0-V evaluation unit
 - T1 Transmitter 1
 - L4 Voltage, lamp 4
 - L3 Voltage, lamp 3
 - L- 0-V lamp circuit

- Connecting cable 2
- ⊥ 0-V evaluation unit
 - +U 24-V evaluation unit
 - R1 Receiver 1
 - L2 Voltage, lamp 2
 - L1 Voltage, lamp 1
 - L- 0-V lamp circuit

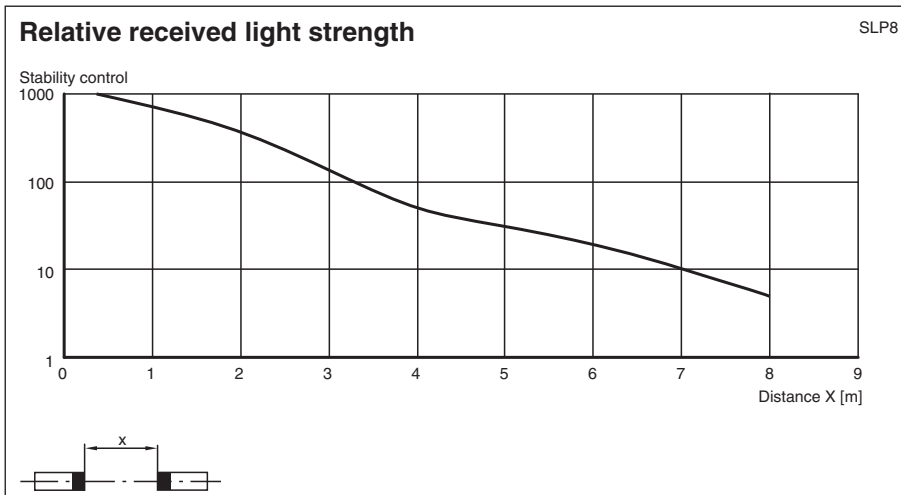
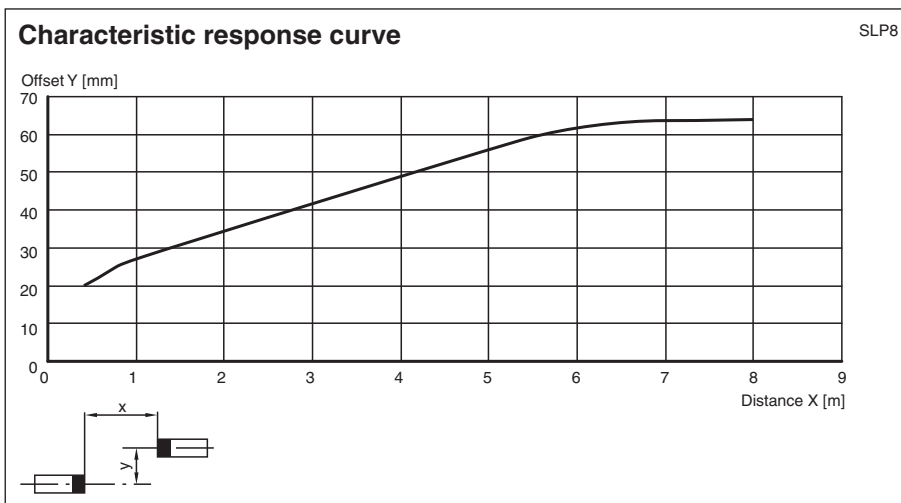
SLP.-n -L



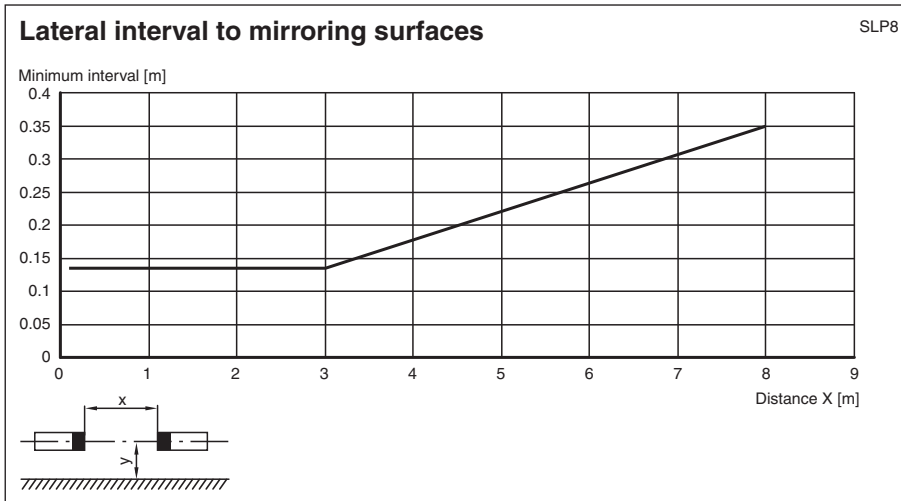
- Connection for receiver
- ⊥ 0-V evaluation unit
 - +U 24-V evaluation unit
 - R1 Receiver 1
 - R2 Receiver 2
 - R3 Receiver 3
 - R4 Receiver 4

- Connection for signal lamps
- L- 0-V lamp circuit
 - L1 Voltage, lamp 1
 - L2 Voltage, lamp 2
 - L3 Voltage, lamp 3

Characteristic Curve



Release date: 2020-08-27 Date of issue: 2020-10-06 Filename: 417786_eng.pdf















Matching system components

	SB4-OR-4XP-B-4159	Safety control unit
	SB4-OR-4XP	Safety control unit
	SB4-OR-4XP-B	SB4 series safety control unit with 1 optional module slot for functional enhancement
	SB4-OR-4XP-B-B	SB4 series safety control unit with optional module slots for functional enhancement
	SB4-OR-4XP-B-B-B	SB4 series safety control unit with optional module slots for functional enhancement
	SB4-OR-4XP-B-B-B-B	SB4 series safety control unit with optional module slots for functional enhancement
	SB4-OR-4XP-B-B-B-B-B	SB4 series safety control unit with optional module slots for functional enhancement
	SB4-OR-4XP-B-4158	Safety control unit
	SB4-OR-4XP-3819	Safety control unit
	SB4-OR-4XP-4M	Safety control unit
	SB4-OR-4XP-4MD	Safety control unit
	SB4-OR-4XP-4M-4136	Safety control unit of series SB4
	SB4-OR-4XP-4X	Safety control unit
	SB4-OR-4XP-4X-3819	Safety control unit
	SB4-OR-4XP-4136	Safety control unit of series SB4

Release date: 2020-08-27 Date of issue: 2020-10-06 Filename: 417786_eng.pdf

Accessories

	SLP-X-M	Deviation mirror for SLP
	MS SLP	Mounting bracket for Light grid
	PG SLP-X	Protective glass panes for SLP series
	PG HOLDER SLP	Holders for SLP protective glass panes
	PA SLP/SLC	Alignment aid for SLP and SLC series profile light grids
	UC SLP/SLC	Floor stand for all series SLP/SLC devices
	UC SLP/SLC 1530 mm	Floor stand for all series SLP/SLC devices
	Damping UC SLP/SLC	Shock absorber as ramming protector for all series SLP/SLC devices
	Enclosure UC SLP/SLC	Housing for floor stand
	MS SLP/SLA28	Fixing plate
	BINDER SLPC/M	Cable tie for the secure laying and fixing of the connection leads, in particular for the muting sensors connected to safety light grids.
	SLP8-2-M	Deviation mirror

Release date: 2020-08-27 Date of issue: 2020-10-06 Filename: 417786_eng.pdf

Refer to "General Notes Relating to Pepperl+Fuchs Product Information".

Pepperl+Fuchs Group
www.pepperl-fuchs.com

USA: +1 330 486 0001
fa-info@us.pepperl-fuchs.com

Germany: +49 621 776 1111
fa-info@de.pepperl-fuchs.com

Singapore: +65 6779 9091
fa-info@sg.pepperl-fuchs.com

Accessories

Other suitable accessories can be found at www.pepperl-fuchs.com

Release date: 2020-08-27 Date of issue: 2020-10-06 Filename: 417786_eng.pdf

Refer to "General Notes Relating to Pepperl+Fuchs Product Information".

Pepperl+Fuchs Group
www.pepperl-fuchs.com

USA: +1 330 486 0001
fa-info@us.pepperl-fuchs.com

Germany: +49 621 776 1111
fa-info@de.pepperl-fuchs.com

Singapore: +65 6779 9091
fa-info@sg.pepperl-fuchs.com

 **PEPPERL+FUCHS**