

Print mark contrast sensor DK10-LAS-54/76/110/124



- Coaxial optical system - no unusable area
- Laser class 2, eyesafe
- Adjustable sensitivity
- 30 μ s response time, suitable for extremely rapid scanning processes
- Sensing range up to 10 m
- Laser-retroreflective sensor

Print mark contrast sensor, 10 m detection range, red laser light, laser class 2, light/dark on, sensitivity adjuster, push-pull output, M12 plug



Function

The contrast sensor series DK10, DK2X, DKE2X and DK3X have an extreme robust and IP67 tight industrial standard housing with eight M5 metal reinforced inserts for sensor mounting. The lenses are made of high grade glass. All sensors offer different light spot shapes and orientations and have powerful push-pull outputs (NPN/PNP/push-pull).

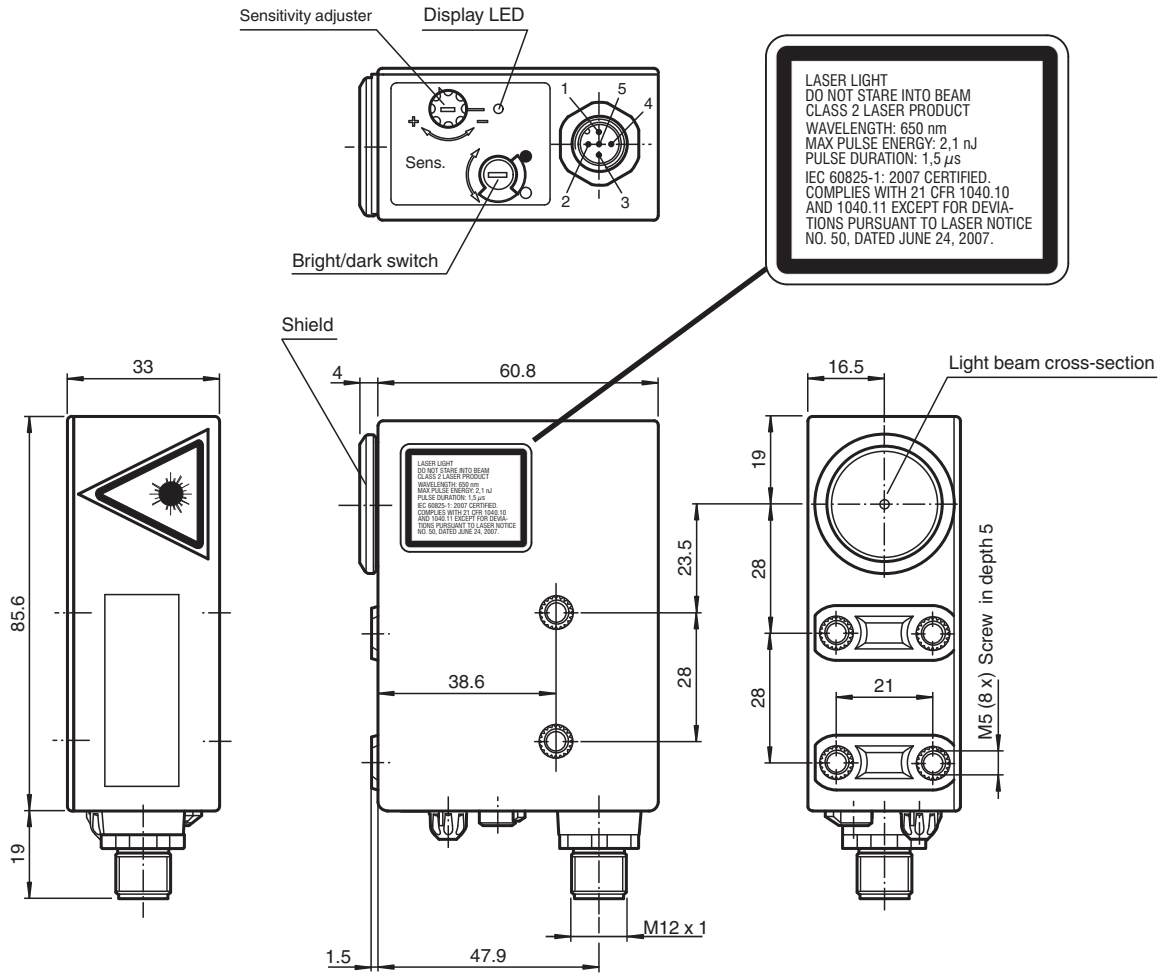
The DK10 sensor series offers laser and LED light sources, a manual sensitivity adjustment and high sensing ranges up to 800 mm.

The DK20/DK21/DKE2X standard contrast sensor series offers a very good contrast recognition and are available in extreme robust stainless-steel housings (DKE).

The DK31/DK34/DK35 sensor series is designed for cutting edge contrast recognition at highest sensitivity level.

The series DK20/DK34 offer a static Teach-In, the DK21/DKE21/DK31/DK35 series offer a dynamic Teach-In.

Dimensions



Technical Data

General specifications	
Effective detection range	0 ... 10 m
Reflector distance	0 ... 10 m
Threshold detection range	12 m
Reference target	reflector C110-2
Light source	laser diode
Light type	modulated visible red light
Laser nominal ratings	
Note	LASER LIGHT , DO NOT STARE INTO BEAM
Laser class	2
Wave length	650 nm
Beam divergence	< 1.5 mrad
Pulse length	1.5 µs
Repetition rate	108.7 kHz
max. pulse energy	2.1 nJ
Light spot representation	approx. 10 mm at a distance of 10 m
Ambient light limit	
Continuous light	40000 Lux
Functional safety related parameters	
MTTF _d	550 a
Mission Time (T _M)	20 a
Diagnostic Coverage (DC)	60 %

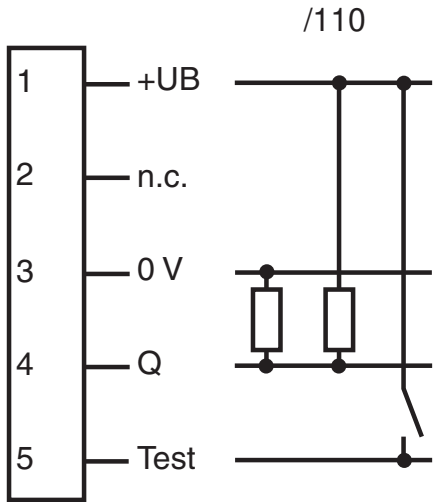
Release date: 2023-09-05 Date of issue: 2023-09-05 Filename: 418068_eng.pdf

Technical Data

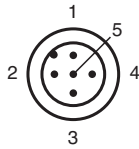
Indicators/operating means		
Function indicator		LED yellow: lights up if receiver is lit (light on), lights up if receiver is not lit (dark on)
Control elements		Light-on/dark-on changeover switch, sensitivity adjuster
Electrical specifications		
Operating voltage	U_B	10 ... 30 V DC
Ripple		10 %
No-load supply current	I_0	≤ 55 mA
Input		
Test input		emitter deactivation with +U _B
Output		
Switching type		light/dark on switchable
Signal output		Push-pull output, short-circuit protected, reverse polarity protected
Switching voltage		PNP: $U_B - 2.5 \text{ V}$ / NPN: $U_{\text{Rest}} 1.5 \text{ V}$
Switching current		max. 200 mA
Switching frequency	f	16.5 kHz
Response time		30 μs
Conformity		
Product standard		EN 60947-5-2
Laser safety		IEC 60825-1:2007
Compliance with standards and directives		
Standard conformity		
Shock and impact resistance		IEC / EN 60068. half-sine, 40 g in each X, Y and Z directions
Vibration resistance		IEC / EN 60068-2-6. Sinus. 10 -150 Hz, 5 g in each X, Y and Z directions
Approvals and certificates		
UL approval		cULus Listed , Class 2 power source
CCC approval		CCC approval / marking not required for products rated ≤36 V
Ambient conditions		
Ambient temperature		-10 ... 50 °C (14 ... 122 °F)
Storage temperature		-20 ... 75 °C (-4 ... 167 °F)
Mechanical specifications		
Housing width		33 mm
Housing height		85.6 mm
Housing depth		60.8 mm
Degree of protection		IP67
Connection		5-pin, M12 x 1 connector
Material		
Housing		PC (glass-fiber-reinforced Makrolon)
Optical face		glass
Mass		200 g

Release date: 2023-09-05 Date of issue: 2023-09-05 Filename: 418068_eng.pdf

Connection Assignment



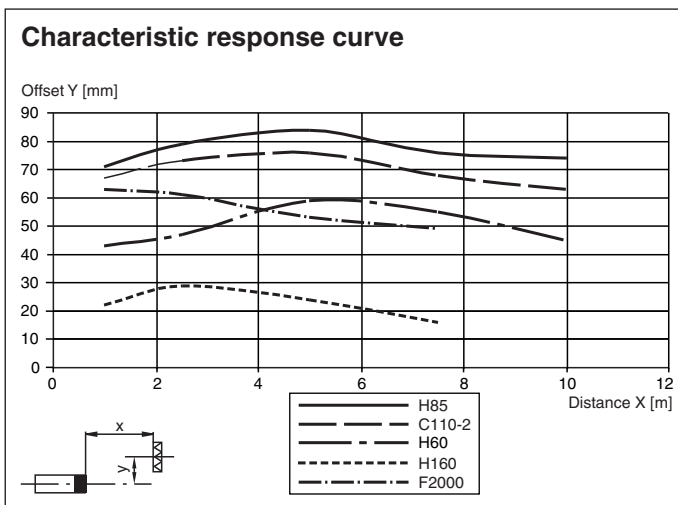
Connection Assignment



Wire colors in accordance with EN 60947-5-2

1	BN	(brown)
2	WH	(white)
3	BU	(blue)
4	BK	(black)
5	GY	(gray)

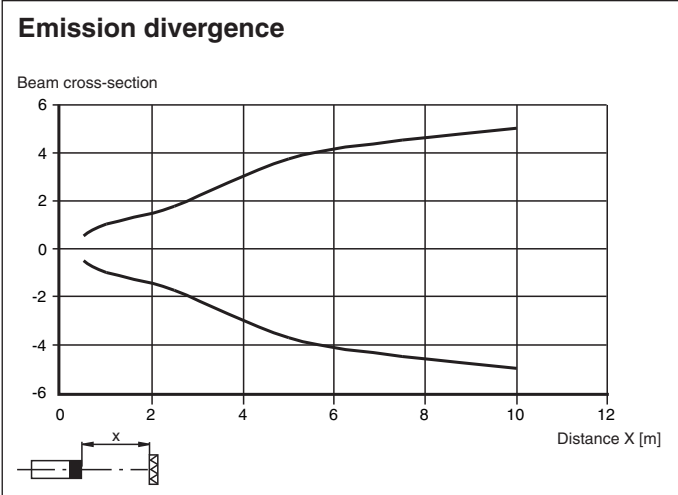
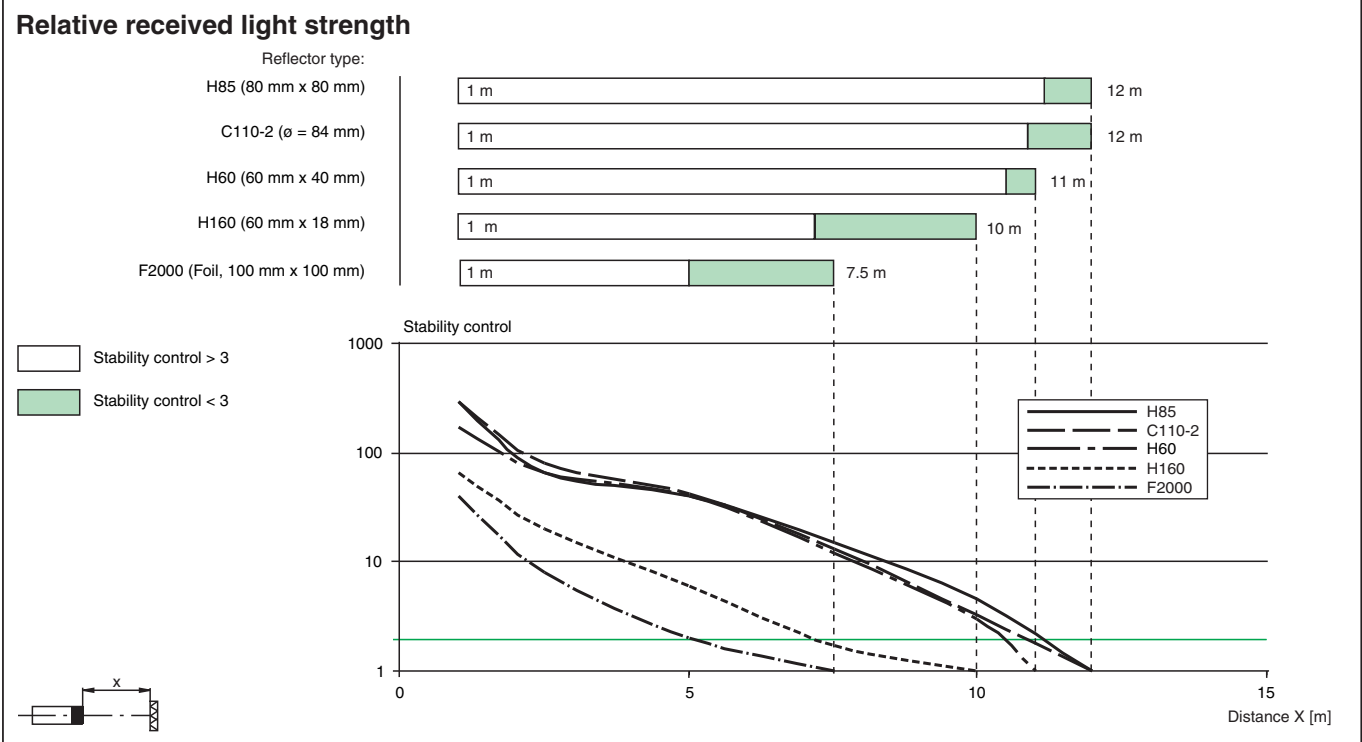
Characteristic Curve



Release date: 2023-09-05 Date of issue: 2023-09-05 Filename: 418068_eng.pdf

Refer to "General Notes Relating to Pepperl+Fuchs Product Information".




Characteristic Curve



Safety Information

Laser Class 2 Information
 The irradiation can lead to irritation especially in a dark environment. Do not point at people!
 Caution: Do not look into the beam!
 Maintenance and repairs should only be carried out by authorized service personnel!
 Attach the device so that the warning is clearly visible and readable.
 Caution – Use of controls or adjustments or performance of procedures other than those specified herein may result in hazardous radiation exposure.

Accessories

	V15-G-5M-PVC	Female cordset single-ended M12 straight A-coded, 5-pin, PVC cable grey
	V15-W-5M-PVC	Female cordset single-ended M12 angled A-coded, 5-pin, PVC cable grey
	OMH-DK	Right-Angled Mounting Bracket

Release date: 2023-09-05 Date of issue: 2023-09-05 Filename: 418068_eng.pdf

Accessories



OMH-DK-1

Flat Mounting Bracket

Release date: 2023-09-05 Date of issue: 2023-09-05 Filename: 418068_eng.pdf

Refer to "General Notes Relating to Pepperl+Fuchs Product Information".

Pepperl+Fuchs Group
www.pepperl-fuchs.com

USA: +1 330 486 0001
fa-info@us.pepperl-fuchs.com

Germany: +49 621 776 1111
fa-info@de.pepperl-fuchs.com

Singapore: +65 6779 9091
fa-info@sg.pepperl-fuchs.com

 **PEPPERL+FUCHS**

Adjustment instructions

The required switching threshold is adjusted with the sensitivity control. Please proceed as follows:

1. Switch the light/dark change-over switch to the light setting.
2. Point the light spot exactly to the reflector.
3. If the yellow indicator LED lights up, turn the sensitivity control to the left until the indicator LED goes off again.
4. If the yellow indicator LED does not light up, miss out this step.
5. Turn the sensitivity control to the right until the indicator LED just lights up.

This adjustment maximizes the sensitivity for detection of small objects ar weak cantrast.

With this setting there is no sensitivity reserve to compensate reflector or optics soiling. To increase operation reliability in your application, turn the sensitivity adjuster another 2 ... 3 turns to the right, when indicator LED lights up, as far as the object ist well detected.