

Background suppression sensor

GLV30-8-H-150-IR/47/73c

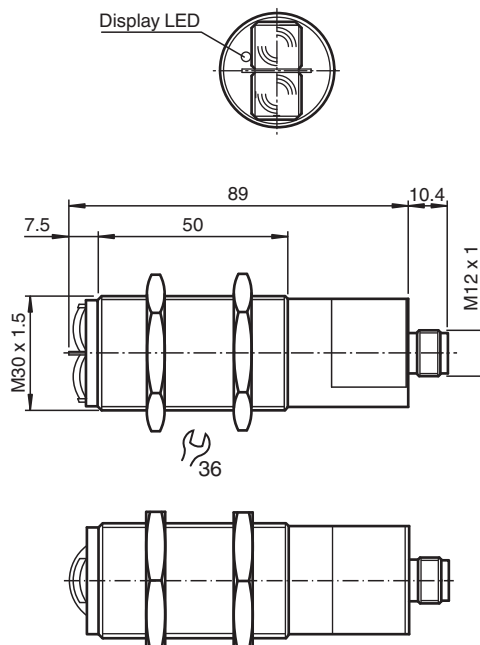


- M30 plastic housing
- Light-on/dark-on switching

Background suppression sensor



Dimensions



Release date: 2023-03-28 Date of issue: 2023-03-28 Filename: 419287_eng.pdf

Refer to "General Notes Relating to Pepperl+Fuchs Product Information".

Pepperl+Fuchs Group
www.pepperl-fuchs.com

USA: +1 330 486 0001
fa-info@us.pepperl-fuchs.com

Germany: +49 621 776 1111
fa-info@de.pepperl-fuchs.com

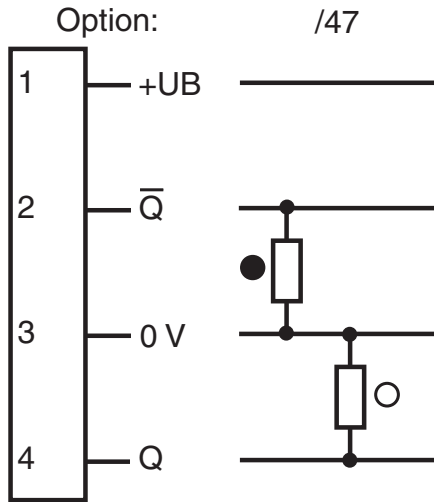
Singapore: +65 6779 9091
fa-info@sg.pepperl-fuchs.com

PEPPERL+FUCHS

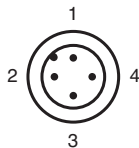
Technical Data

General specifications		
Detection range		20 ... 150 mm
Detection range min.		0 ... 145 mm
Detection range max.		0 ... 170 mm
Background suppression		starts from 180 mm
Light source		IRED
Light type		modulated infrared light
Black-white difference (6 %/90 %)		< 10 mm
Diameter of the light spot		4 mm at a distance of 150 mm
Opening angle		± 1 °
Ambient light limit		30000 Lux
Indicators/operating means		
Function indicator		LED yellow, lights up if receiver is not lit
Electrical specifications		
Operating voltage	U _B	24 V DC ± 20 %
Ripple		10 %
No-load supply current	I ₀	30 mA
Output		
Switching type		light/dark on
Signal output		2 PNP, complementary, short-circuit protected, reverse polarity protected
Switching voltage		max. 30 V DC
Switching current		max. 200 mA
Switching frequency	f	35 Hz
Response time		10 ms
Standard conformity		
Standards		EN 60947-5-2
Approvals and certificates		
CCC approval		CCC approval / marking not required for products rated ≤36 V
Approvals		CE
Ambient conditions		
Ambient temperature		-20 ... 60 °C (-4 ... 140 °F)
Storage temperature		-20 ... 75 °C (-4 ... 167 °F)
Mechanical specifications		
Degree of protection		IP67
Connection		Plastic connector M12 x 1, 4-pin
Material		
Housing		ABS
Optical face		plastic lenses
Mass		approx. 70 g

Connection Assignment



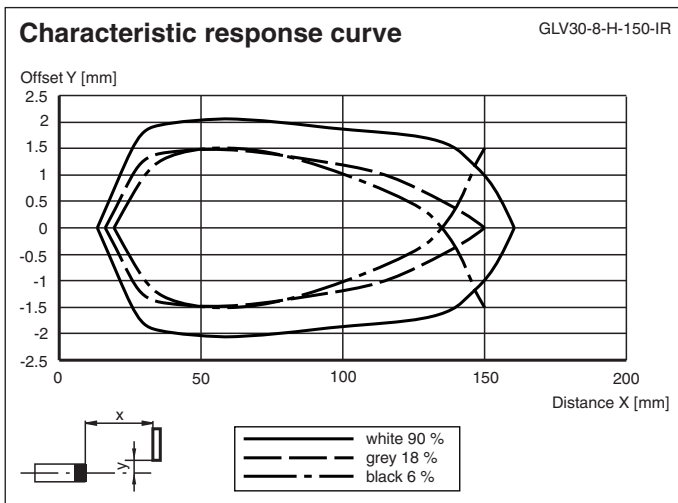
Connection Assignment



Wire colors in accordance with EN 60947-5-2

1	BN	(brown)
2	WH	(white)
3	BU	(blue)
4	BK	(black)

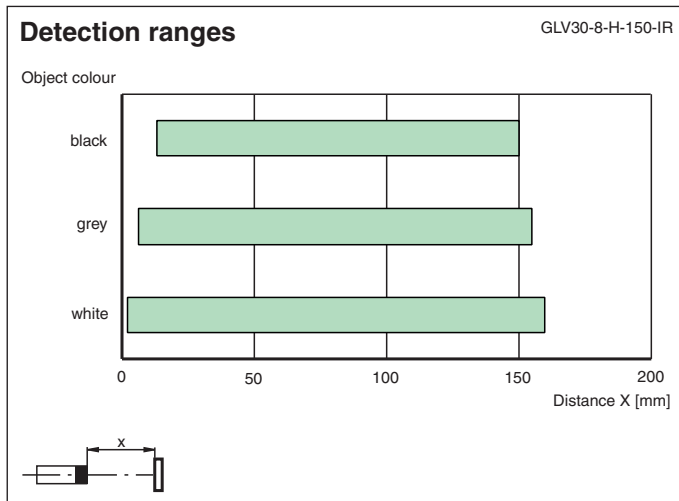
Characteristic Curve






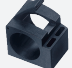
Release date: 2023-03-28 Date of issue: 2023-03-28 Filename: 419287_eng.pdf

Refer to "General Notes Relating to Pepperl+Fuchs Product Information".

Characteristic Curve



Accessories

	V1-G-2M-PUR	Female cordset single-ended M12 straight A-coded, 4-pin, PUR cable grey
	V1-W-2M-PUR	Female cordset single-ended M12 angled A-coded, 4-pin, PUR cable grey
	BF 30	Mounting flange, 30 mm
	BF 30-F	Plastic mounting adapter, 30 mm