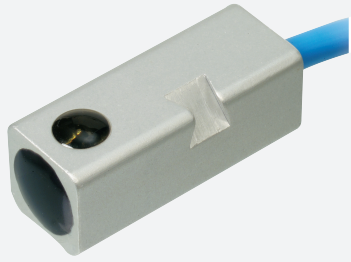


Magnetic field sensor

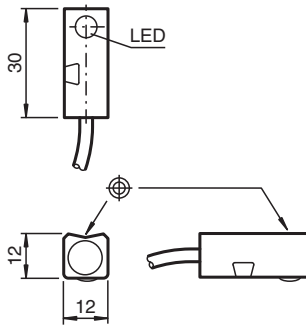
MB35-F12-1N



- Comfort series
- 35 mm flush



Dimensions



Technical Data

General specifications

Switching function		Normally open (NO)
Output type		NAMUR
Rated operating distance	s_n	35 mm
Installation		flush
Assured operating distance	s_a	0 ... 35 mm
Output type		2-wire

Nominal ratings

Nominal voltage	U_o	8.2 V (R_i approx. 1 k Ω)
Switching frequency	f	0 ... 5000 Hz
Current consumption		
Magnet detected		≥ 3 mA
Magnet not detected		≤ 1 mA
Switching state indicator		LED, yellow

Functional safety related parameters

MTTF _d		2781 a
Mission Time (T_M)		20 a

Release date: 2024-03-15 Date of issue: 2024-03-15 Filename: 70108303_eng.pdf

Refer to "General Notes Relating to Pepperl+Fuchs Product Information".

Pepperl+Fuchs Group
www.pepperl-fuchs.com

USA: +1 330 486 0001
fa-info@us.pepperl-fuchs.com

Germany: +49 621 776 1111
fa-info@de.pepperl-fuchs.com

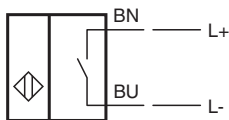
Singapore: +65 6779 9091
fa-info@sg.pepperl-fuchs.com

 PEPPERL+FUCHS

Technical Data

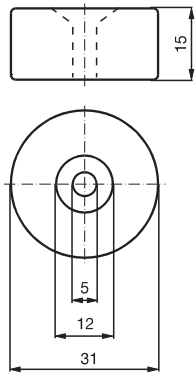
Diagnostic Coverage (DC)	0 %
Compliance with standards and directives	
Standard conformity	
NAMUR	EN 60947-5-6:2000
Standards	EN 60947-5-2:2007 EN 60947-5-2/A1:2012
Approvals and certificates	
IECEX approval	
Equipment protection level Gb	IECEX TUN 20.0007
Equipment protection level Da	IECEX TUN 20.0007
ATEX approval	
Equipment protection level Gb	TÜV 20 ATEX 241336
Equipment protection level Da	TÜV 20 ATEX 241336
Ambient conditions	
Ambient temperature	-25 ... 70 °C (-13 ... 158 °F)
Mechanical specifications	
Connection type	cable PVC , 2 m
Core cross section	0.34 mm ²
Housing material	anodized aluminum
Sensing face	black plastic
Degree of protection	IP67
Dimensions	
Height	12 mm
Width	12 mm
Length	30 mm
General information	
Use in the hazardous area	see instruction manuals

Connection

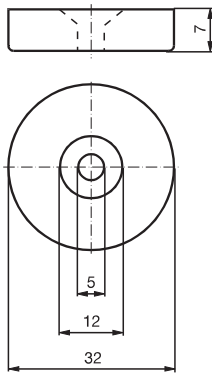


Additional Information

Magnet DM 60-31-15



Magnet DM 25-32-07



Release date: 2024-03-15 Date of issue: 2024-03-15 Filename: 70108303_eng.pdf

Refer to "General Notes Relating to Pepperl+Fuchs Product Information".

Pepperl+Fuchs Group
www.pepperl-fuchs.com

USA: +1 330 486 0001
fa-info@us.pepperl-fuchs.com

Germany: +49 621 776 1111
fa-info@de.pepperl-fuchs.com

Singapore: +65 6779 9091
fa-info@sg.pepperl-fuchs.com

PF PEPPERL+FUCHS