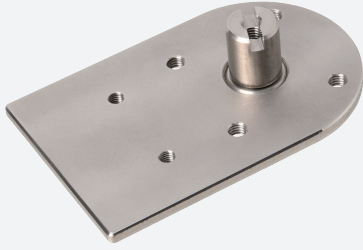


Adapter plate

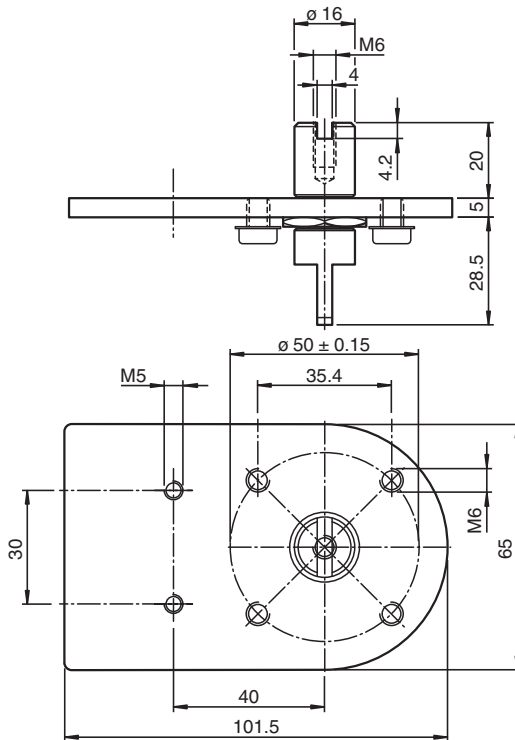
MHV-BT-F25/F31



- Simple mounting
- All-in-one stainless steel solution
- Minimal friction due to ball bearing
- Conforming to standards

Adapter plate for double sensors -F25/-F31 series

Dimensions



Technical Data

General specifications

Suitable sensors and	Double sensors, -F25 series with actuator BT32... Double sensors, -F25K series with actuator BT32... Double sensors, -F31 series with actuator BT65...
----------------------	--

Standard conformity

Standards	VDI / VDE 3845 DIN EN ISO 5211
-----------	-----------------------------------

Mechanical specifications

Shaft diameter	16 mm
Shaft height	20 mm
Mounting hole pattern	sensor: 30 x 80 mm, M5 screw mounting bracket: 4 x 50 mm, M6 screw

Release date: 2021-11-25 Date of issue: 2021-11-25 Filename: 70131305_eng.pdf

Refer to "General Notes Relating to Pepperl+Fuchs Product Information".

Pepperl+Fuchs Group
www.pepperl-fuchs.com

USA: +1 330 486 0001
fa-info@us.pepperl-fuchs.com

Germany: +49 621 776 1111
fa-info@de.pepperl-fuchs.com







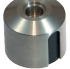



Singapore: +65 6779 9091
fa-info@sg.pepperl-fuchs.com

PF PEPPERL+FUCHS

Technical Data

Material	stainless steel 1.4301 / AISI 304 for plates and sheet metal bending parts Stainless steel 1.4305 / AISI 303 for shaft
Mounting materials	stainless steel socket cap head screws 4 x M6 x 8 mm
Mass	300 g

Matching System Components

	NCN3-F25-N4-5M	
	NBN4-F25-E8-V1	
	NBN4-F25K-2Z4L	
	NCN3-F31-N4-V1	
	NCN3-F31-N4-K	
	BT32-F25-0	
	BT32XAS	Activator for F25 series
	BT65A	Activator for F31 series
	BT65B	Activator for F31 series
	BT65X	Activator for F31 series

Release date: 2021-11-25 Date of issue: 2021-11-25 Filename: 70131305_eng.pdf