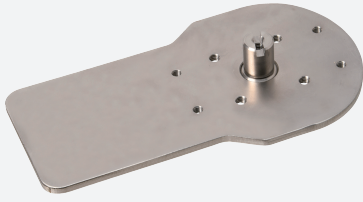


Adapter plate

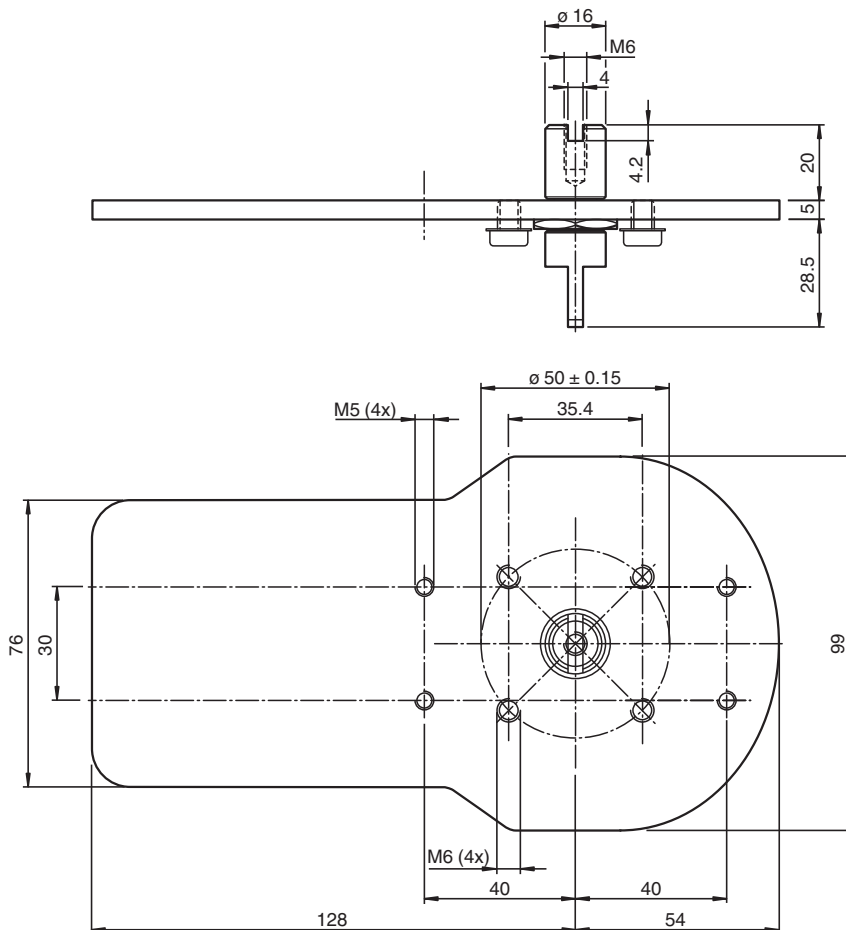
MHV-BT-F31K/F31K2



- Simple mounting
- All-in-one stainless steel solution
- Minimal friction due to ball bearing
- Conforming to standards

Adapter plate for double sensors F31K/-F31K2 series

Dimensions



Technical Data

General specifications

Suitable sensors and

Double sensors, -F31K series with actuator BT65...
Double sensors, -F31K2 series with actuator BT65...

Standard conformity

Release date: 2021-11-25 Date of issue: 2021-11-25 Filename: 70131306_eng.pdf

Refer to "General Notes Relating to Pepperl+Fuchs Product Information".

Pepperl+Fuchs Group
www.pepperl-fuchs.com

USA: +1 330 486 0001
fa-info@us.pepperl-fuchs.com

Germany: +49 621 776 1111
fa-info@de.pepperl-fuchs.com









Singapore: +65 6779 9091
fa-info@sg.pepperl-fuchs.com

PF PEPPERL+FUCHS

Technical Data

Standards	VDI / VDE 3845 DIN EN ISO 5211
Mechanical specifications	
Shaft diameter	16 mm
Shaft height	20 mm
Mounting hole pattern	sensor: 30 x 80 mm, M5 screw mounting bracket: 4 x 50 mm, M6 screw
Material	stainless steel 1.4301 / AISI 304 for plates and sheet metal bending parts Stainless steel 1.4305 / AISI 303 for shaft
Mounting materials	stainless steel socket cap head screws 4 x M6 x 8 mm
Mass	636 g

Matching System Components

	NCN3-F31K-N4-B13	
	NBN3-F31K2-Z8L-B13-S	
	NBN3-F31K2M-Z8L-B13-S-3G-3D	
	BT65A	Activator for F31 series
	BT65B	Activator for F31 series
	BT65X	Activator for F31 series
	BT65-F31-RG-EN	Activator for F31 and F31K series including protective housing
	BT65-F31K2-RG-EN	Activator for F31K2 series