

Connection cable, Ethernet

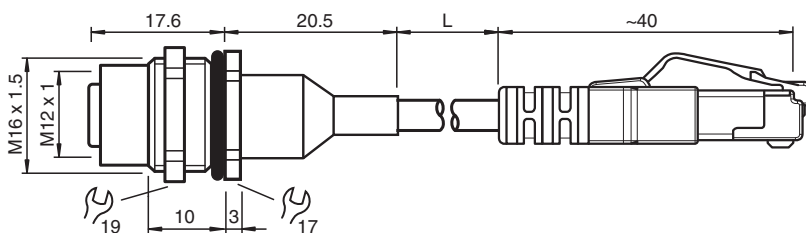
V1D-M16H-GN1M-PUR-E1S-V45-G

- Hard-wearing PUR cable
- Suitable for drag chains and abrasion resistant
- Industrial Ethernet
- D coding for Ethernet
- Conforms to PROFINET
- CAT5/CAT5e cable
- Free of paint wetting interfering substances
- Halogen-free
- Rear/screw mounting
- Image is generic for this device type and may deviate from the specific variant

Ethernet bus cable receptacle M12 socket straight D-coded to RJ45 Ethernet-coded, 4-pin, PUR cable green, Cat5e, shielded, drag chain suitable



Dimensions



Technical Data

General specifications

Connector 1	
Connection	socket
Construction type	M12
Style	straight
Locking	screw connection
Number of pins	4
Coding	D-coded
Customization	Receptacles
Connector 2	
Connection	plug
Construction type	RJ45
Style	straight
Locking	snap locking
Number of pins	8
Coding	EtherNet/IP / PROFINET

Electrical specifications

Operating voltage	U _B	max. 48 V AC / 60 V DC
-------------------	----------------	------------------------

Conformity

Degree of protection	EN 60529
Plug connection	connector M12 x 1 : IEC 61076-2-101 connector RJ45 : IEC 60603-7
Component category	CAT5 (IEC 11801) , CAT5e (IEC 61156-6)

Release date: 2024-03-17 Date of issue: 2024-03-17 Filename: 70132083_eng.pdf

Refer to "General Notes Relating to Pepperl+Fuchs Product Information".

Pepperl+Fuchs Group
www.pepperl-fuchs.com

USA: +1 330 486 0001
fa-info@us.pepperl-fuchs.com

Germany: +49 621 776 1111
fa-info@de.pepperl-fuchs.com

Singapore: +65 6779 9091
fa-info@sg.pepperl-fuchs.com

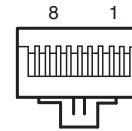
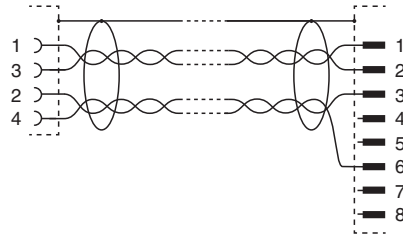
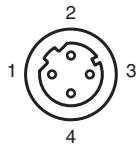
PF PEPPERL+FUCHS

Technical Data

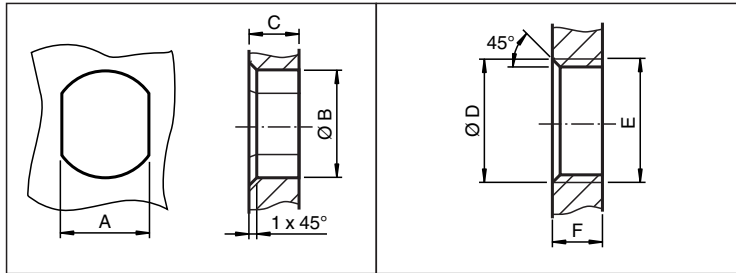
Flammability		IEC 60332-1-2 / UL 2556 / ISO 6722-1 5.22 (UN ECE-R 118.01)
Ambient conditions		
Ambient temperature		
Connector 1		-40 ... 90 °C (-40 ... 194 °F)
Cable, fixed		-30 ... 70 °C (-22 ... 158 °F) , UL: -20 ... 70 °C (-4 ... 158 °F)
Cable, flexing		-20 ... 70 °C (-4 ... 158 °F)
Mechanical specifications		
Connector 1		
Tightening torque		0.6 Nm
Tool installation		Rear mounting M16 , SW = 17 mm and SW = 19 mm
Mating cycles		min. 100
Shielding		shield connected to connector
Degree of protection		IP67
Connector 2		
Loosening protection		available
Mating cycles		min. 100
Shielding		shield connected to connector
Degree of protection		IP20
Cable		
		according to IEC/EN 60228 (DIN VDE 0295) class 5
Sheath diameter		6 mm
Bending radius		> 10 x cable diameter, moving > 8 x cable diameter, fixed
Sheath stripping force		max. 60 N / 100 mm
Sheath color		green (similar to RAL 6018)
Number of cores		4
Core cross section		0.34 mm ² / 22 AWG
Cores color		Core 1-1: yellow Core 2-3: white Core 3-2: orange Core 4-6: blue
Core construction		7 x 0.254 mm Ø twisted quad
Shield		aluminum-lined polyester foil Tinned copper braiding
Length	L	1 m
Drag chain suitability		
Drag chain cycles		max. 1000000
Motion velocity		max. 3 m/s
Traverse distance		max. 5 m
Acceleration		max. 2 m/s ²
Material		
PWIS free		yes
Halogen-free		yes
Connector 1		
Screw connection		Zinc diecast, nickel-plated
Seal		FKM
Contact surface		Au
Flammability		V-2
Connector 2		
Body		PA, green
Flammability		V-0
Cable		
Sheathing		PUR based on polyether
Core insulation		PP
Flammability		FT2 complies with UN ECE-R 118.01

Release date: 2024-03-17 Date of issue: 2024-03-17 Filename: 70132083_eng.pdf

Connection



Mounting



	A	B	C	D	E	F
M8	7.1 ^{+0.1}	Ø 8.2 ^{+0.1}	2 - 4 mm	-	M8x0.5	2 - 4 mm
M12	11 ^{+0.1}	Ø 12.2 ^{+0.1}	< 4 mm	-	M12x1	< 4.5 mm
M16	13.5 ^{+0.1}	Ø 16.1	< 4.5 mm	Ø 17 ^{+0.2}	M16x1.5	> 2.5 mm
M20	13.5 ^{+0.1}	Ø 20.1	-	Ø 20 ^{+0.2}	M20x1.5	< 6 mm
PG9	13.5 ^{+0.1}	Ø 15.3 ^{+0.1}	< 4.5 mm	Ø 16	PG9	> 2.5 mm
PG13.5	18.8 ^{+0.1}	Ø 20.5 ^{+0.1}	-	Ø 22 ^{±0.1}	PG13.5	-

Release date: 2024-03-17 Date of issue: 2024-03-17 Filename: 70132083_eng.pdf