

# Inductive sensor

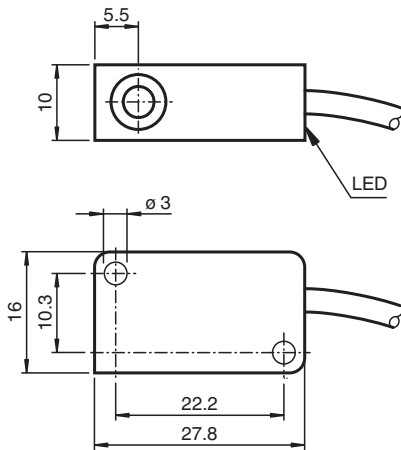
## NCN4-V3-N0



- 4 mm non-flush
- Usable up to SIL 2 acc. to IEC 61508



### Dimensions



### Technical Data

General specifications			
Switching function			Normally closed (NC)
Output type			NAMUR
Rated operating distance	$s_n$		4 mm
Installation			non-flush
Assured operating distance	$s_a$		0 ... 3.24 mm
Reduction factor $r_{AI}$			0.3
Reduction factor $r_{Cu}$			0.2
Reduction factor $r_{304}$			0.7
Output type			2-wire
Nominal ratings			
Nominal voltage	$U_o$		8.2 V ( $R_i$ approx. 1 k $\Omega$ )
Switching frequency	$f$		0 ... 2000 Hz
Hysteresis	$H$		typ. 5 %
Current consumption			
Measuring plate not detected			$\geq 3$ mA
Measuring plate detected			$\leq 1$ mA

Release date: 2024-04-12 Date of issue: 2024-04-12 Filename: 70133087\_eng.pdf

Refer to "General Notes Relating to Pepperl+Fuchs Product Information".

Pepperl+Fuchs Group  
www.pepperl-fuchs.com

USA: +1 330 486 0001  
fa-info@us.pepperl-fuchs.com

Germany: +49 621 776 1111  
fa-info@de.pepperl-fuchs.com

Singapore: +65 6779 9091  
fa-info@sg.pepperl-fuchs.com

**PEPPERL+FUCHS**

## Technical Data

Switching state indicator	LED, yellow
<b>Functional safety related parameters</b>	
Safety Integrity Level (SIL)	SIL 2
MTTF <sub>d</sub>	1735 a
Mission Time (T <sub>M</sub> )	20 a
Diagnostic Coverage (DC)	0 %
<b>Compliance with standards and directives</b>	
Standard conformity	
NAMUR	EN 60947-5-6:2000 IEC 60947-5-6:1999
Electromagnetic compatibility	NE 21:2007
Standards	EN 60947-5-2:2007 EN 60947-5-2/A1:2012 IEC 60947-5-2:2007 IEC 60947-5-2 AMD 1:2012
<b>Approvals and certificates</b>	
IECEX approval	
Equipment protection level Ga	IECEX PTB 11.0021X
Equipment protection level Gb	IECEX PTB 11.0021X
Equipment protection level Da	IECEX PTB 11.0021X
Equipment protection level Mb	IECEX PTB 11.0021X
ATEX approval	
Equipment protection level Ga	PTB 00 ATEX 2032 X
Equipment protection level Gb	PTB 00 ATEX 2032 X
Equipment protection level Da	PTB 00 ATEX 2032 X
UL approval	
Ordinary Location	E87056
Hazardous Location	E501628
Control drawing	116-0451
CCC approval	
Hazardous Location	2020322315002302
NEPSI approval	
NEPSI certificate	GYJ16.1394X
CML approval	on request
ANZEx	19.3001X
<b>Ambient conditions</b>	
Ambient temperature	-25 ... 100 °C (-13 ... 212 °F)
<b>Mechanical specifications</b>	
Connection type	cable
Housing material	PBT
Sensing face	PBT
Degree of protection	IP67
Cable	
Cable diameter	2.6 mm ± 0.2 mm
Bending radius	> 10 x cable diameter
Material	PVC
Core cross section	0.14 mm <sup>2</sup>
Length	L 130 mm
Tightening torque, fastening screws	≤ 0.4 Nm
Dimensions	
Height	10.2 mm
Width	27.8 mm
Length	16 mm
<b>General information</b>	

Release date: 2024-04-12 Date of issue: 2024-04-12 Filename: 70133087\_eng.pdf

Refer to "General Notes Relating to Pepperl+Fuchs Product Information".

Pepperl+Fuchs Group  
www.pepperl-fuchs.comUSA: +1 330 486 0001  
fa-info@us.pepperl-fuchs.comGermany: +49 621 776 1111  
fa-info@de.pepperl-fuchs.comSingapore: +65 6779 9091  
fa-info@sg.pepperl-fuchs.com

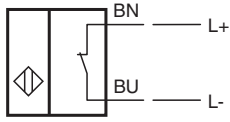
**PEPPERL+FUCHS**

## Technical Data

Use in the hazardous area

see instruction manuals

## Connection



Release date: 2024-04-12 Date of issue: 2024-04-12 Filename: 70133087\_eng.pdf

Refer to "General Notes Relating to Pepperl+Fuchs Product Information".

Pepperl+Fuchs Group  
www.pepperl-fuchs.com

USA: +1 330 486 0001  
fa-info@us.pepperl-fuchs.com

Germany: +49 621 776 1111  
fa-info@de.pepperl-fuchs.com

Singapore: +65 6779 9091  
fa-info@sg.pepperl-fuchs.com