

Mounting adapter

EMCAD-M08-1,25-M08-1,25/36

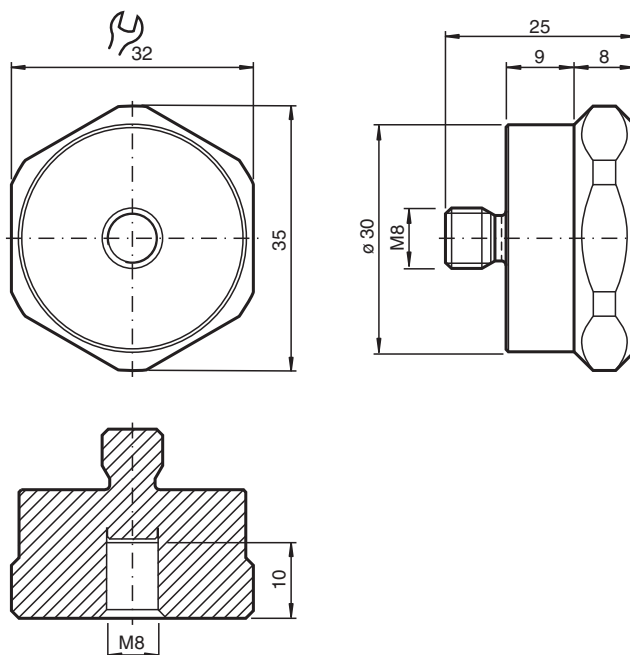
- Usable for VIM3* / VIM6* vibration sensors with external thread
- Robust due to stainless steel 1.4404 / AISI 316L (V4A)
- Screw-in thread for simple installation

EMC adapter for VIM3*/VIM6* vibration sensors, internal thread M8 x 1.25 x 10, external thread M8 x 1.25, screw-in depth 8

Function

The EMC adapter is used for a galvanic isolation between sensor and application. For this purpose, the EMC adapter is screwed into the installation location of the application and the vibration sensor is screwed with its external thread into the internal thread of the EMC adapter.

Dimensions



Technical Data

General specifications

Suitable components	VIM3* vibration sensors VIM6* vibration sensors
---------------------	--

Mechanical specifications

External thread	for machine mounting
Thread type	metric

Release date: 2023-05-31 Date of issue: 2023-05-31 Filename: 70146794_eng.pdf

Refer to "General Notes Relating to Pepperl+Fuchs Product Information".

Pepperl+Fuchs Group
www.pepperl-fuchs.com

USA: +1 330 486 0001
fa-info@us.pepperl-fuchs.com

Germany: +49 621 776 1111
fa-info@de.pepperl-fuchs.com

Singapore: +65 6779 9091
fa-info@sg.pepperl-fuchs.com

PF PEPPERL+FUCHS

Technical Data

Thread size		M8 x 1.25
Screw-in depth		8 mm
Internal thread		for sensor mounting
Thread type		metric
Thread size		M8 x 1.25
Thread length		10 mm
Length	L	25 mm
Diameter		35 mm
Material		Stainless steel 1.4404 / AISI 316L
Mass		71 g

Release date: 2023-05-31 Date of issue: 2023-05-31 Filename: 70146794_eng.pdf

Refer to "General Notes Relating to Pepperl+Fuchs Product Information".

Pepperl+Fuchs Group
www.pepperl-fuchs.com

USA: +1 330 486 0001
fa-info@us.pepperl-fuchs.com

Germany: +49 621 776 1111
fa-info@de.pepperl-fuchs.com

Singapore: +65 6779 9091
fa-info@sg.pepperl-fuchs.com