



Model Number

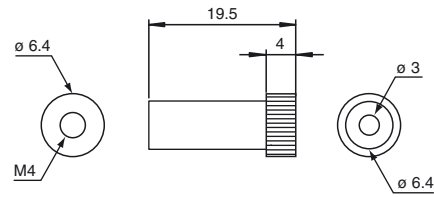
K-LA06

Collimation lens, increases operating range by up to eight times, M4 thread

Features

- Collimation lens
- Thread M4
- increases operating range by up to eight times

Dimensions



Technical data

Ambient conditions

Ambient temperature -30 ... 200 °C (-22 ... 392 °F)

Mechanical specifications

Material plastic

Mass approx. 1 g

Suitable series

Series Fiberoptics