



Model Number

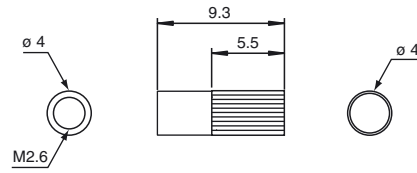
K-LA01

Collimation lens, increases operating range by up to four times, M2.6 thread

Features

- Collimation lens
- Thread M2.6
- increases operating range by up to four times

Dimensions



Technical data

Ambient conditions

Ambient temperature -30 ... 200 °C (-22 ... 392 °F)

Mechanical specifications

Material Stainless steel

Mass approx. 1 g

Suitable series

Series Fiberoptics