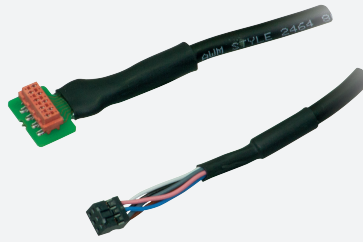


# Connection cable DoorScan®

## DoorScan Cable BS/BGS

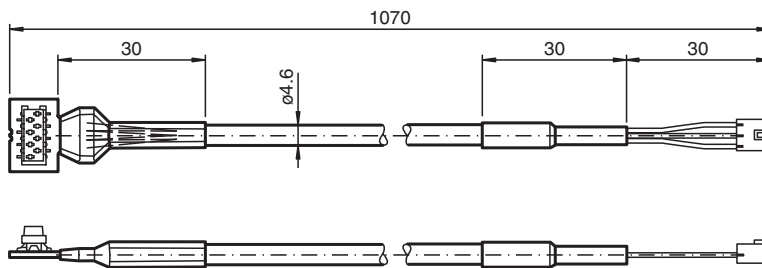


- Connecting cable between hinge side and leading edge side
- Connection to interface module

Connecting cable for transition from hinge side to leading edge side



### Dimensions



### Technical Data

Electrical specifications		
Operating voltage	U <sub>B</sub>	max. 300 V
Ambient conditions		
Ambient temperature		-55 ... 80 °C (-67 ... 176 °F)
Mechanical specifications		
Connection		2 x plug-in terminal
Cable		PVC, black 6-wire
Sheath diameter		approx. 4.6 mm
Bending radius		min. 23 mm
Length	L	1070 mm
Mass		approx. 32 g
Suitable series		
Series		DoorScan®

Release date: 2020-09-10 Date of issue: 2020-10-08 Filename: 247289\_eng.pdf

Refer to "General Notes Relating to Pepperl+Fuchs Product Information".

Pepperl+Fuchs Group  
www.pepperl-fuchs.com

USA: +1 330 486 0001  
fa-info@us.pepperl-fuchs.com

Germany: +49 621 776 1111  
fa-info@de.pepperl-fuchs.com

Singapore: +65 6779 9091  
fa-info@sg.pepperl-fuchs.com

**PF** PEPPERL+FUCHS