

HAZARDOUS (CLASSIFIED) LOCATION  
 CLASS I, DIVISION 1, GROUPS A,B,C,D  
 CLASS II, DIVISION 1, GROUPS E,F,G  
 CLASS III, DIVISION 1

NON-HAZARDOUS LOCATION

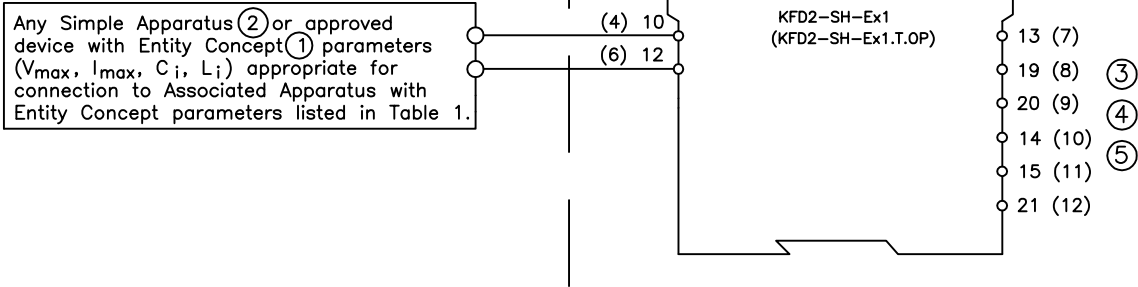


TABLE 1 – ENTITY PARAMETERS

MODEL NUMBER	TERMINALS	V <sub>oc</sub> (V)	I <sub>sc</sub> (mA)	V <sub>t</sub> (V)	I <sub>t</sub> (mA)	GROUPS	C <sub>a</sub> (uF)	L <sub>a</sub> (mH)
KFD2-SH-Ex1	10-12	9.78	15.7	-	-	A,B	3.5	133.3
						C,E	10.5	399.9
						D,F,G	28	1066.4
KFD2-SH-Ex1.T.OP	4-6	9.78	17.2	-	-	A,B	3.5	111.9
						C,E	10.5	335.7
						D,F,G	28	895.2

NOTES:

- ① The Entity Concept allows interconnection of intrinsically safe apparatus with associated apparatus not specifically examined in combination as a system when the approved values of V<sub>oc</sub> (or V<sub>t</sub>) and I<sub>sc</sub> (or I<sub>t</sub>) for the associated apparatus are less than or equal to V<sub>max</sub> and I<sub>max</sub> for the intrinsically safe apparatus and the approved values of C<sub>a</sub> and L<sub>a</sub> for the associated apparatus are greater than C<sub>i</sub> + C<sub>cable</sub> and L<sub>i</sub> + L<sub>cable</sub>, respectively, for the intrinsically safe apparatus.
- ② "Simple Apparatus" is defined as a device which will neither generate nor store more than 1.2V, 0.1A, 20uJ, or 25mW.
- ③ Wiring methods must be in accordance with the National Electrical Code, ANSI/NFPA 70, Article 504. Additional installation information can be found in ANSI/ISA-RP 12.6.
- ④ Barriers shall not be connected to any device which uses or generates internally any voltage in excess of 250V Rms or DC unless the device has been determined to adequately isolate the voltage from the barrier.
- ⑤ Connection of the barriers to ground is not required.

Certification Status		
Agency	Pending	Final
FM	X	X
CSA		
UL		

						Product Part No.			Title INSTALLATION DRAWING FOR CONTROL SAFE ISOLATED BARRIERS – FM		
						THIS DRAWING CONTAINS PROPRIETARY DATA. NO DISCLOSURE, REPRODUCTION, OR USE OF ANY PART MAY BE MADE EXCEPT BY WRITTEN PERMISSION.					
Revisions			ECO No.								
0	3-20-98	W.B.				Pepperl+Fuchs® Inc.			Repl.No.	Draw. 116-0158	Sh. 1 of 1
In.	Date	Cons.	Resp.	Appr.		Twinsburg, OH 44087-2202			-	No.	