

AS-Interface Gateway VBG-EP1-KE5-D/DMD

Quick Start Guide



Click or Scan

EtherNet/IP™



This Quick Start Guide explains how to set the VBG-EP1-KE5-D/DMD to EtherNet/IP or PROFINET Protocol

The standard protocol for the ASi gateway is PROFINET. Switch on the gateway with 24 V on AUX or use a 30.5 V power supply on ASi Line 1. After connection, the corresponding green power LED lights up.

Checking the Protocol

When the gateway is first powered up, the indicator lights on the gateway should look similar to the left image of Figure 1.0. The BF light will flash because there is no PROFINET connection, and the SF will be solid green, indicating that the gateway is currently set to the PROFINET protocol. If only the SF light is flashing green, this indicates that the gateway is currently set to EtherNet/IP, similar to the right image.

Note: The configuration process by push button is time-limited. If it is not completed within 5 seconds, the configuration mode is cancelled. In general, configuration mode is exited automatically if the push button is not touched.

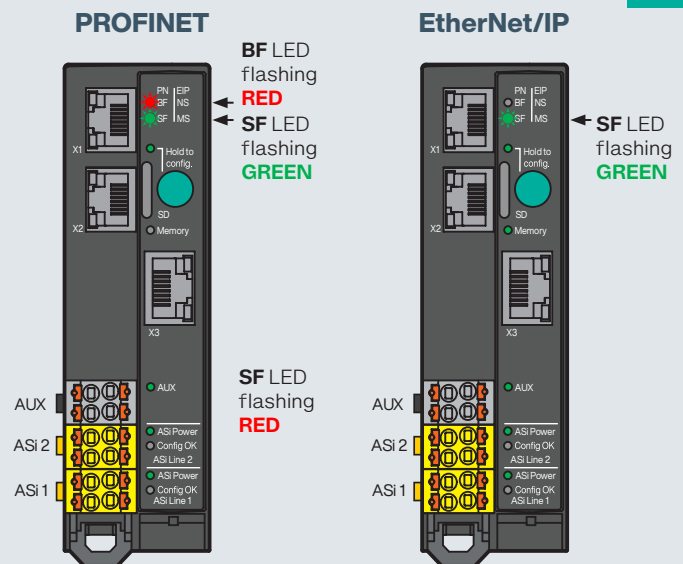


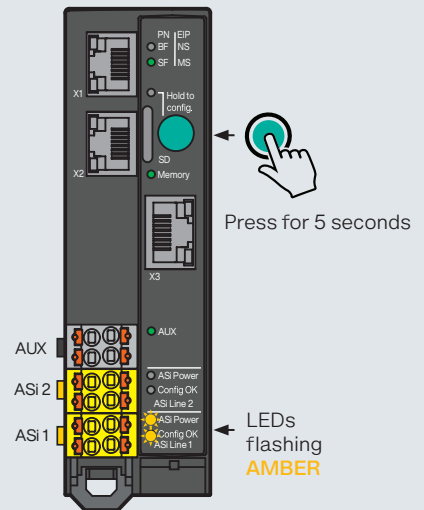
Figure 1.0

Change Procedure

- 1) Press the push button longer than 5 seconds or until the ASI Line 1 power and configuration LED flash amber as shown in step 1.
- 2) Press and release the push button repeatedly until the BF LED flashes amber (set protocol to PROFINET) or until the SF LED flashes amber (set protocol to EtherNet/IP). See step 2.
3. Once the LED is flashing, press and hold the push button until the LED turns green. See step 3.

The KE5 ASI gateway is now set to the intended EtherNet/IP or PROFINET protocol.

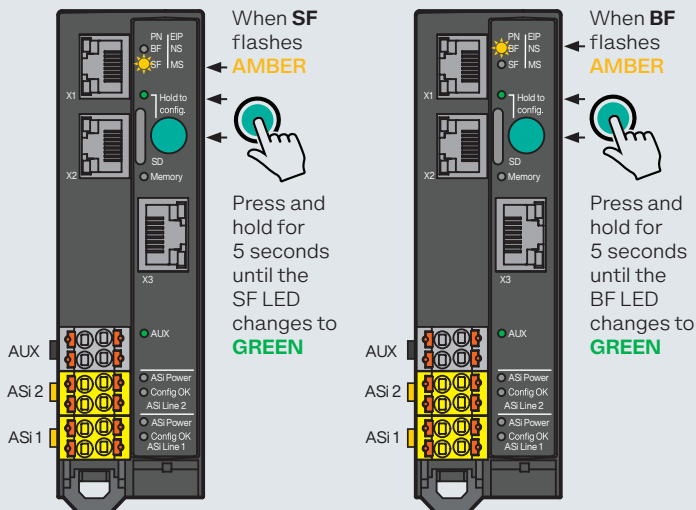
Step
1



Step
2

EtherNet/IP

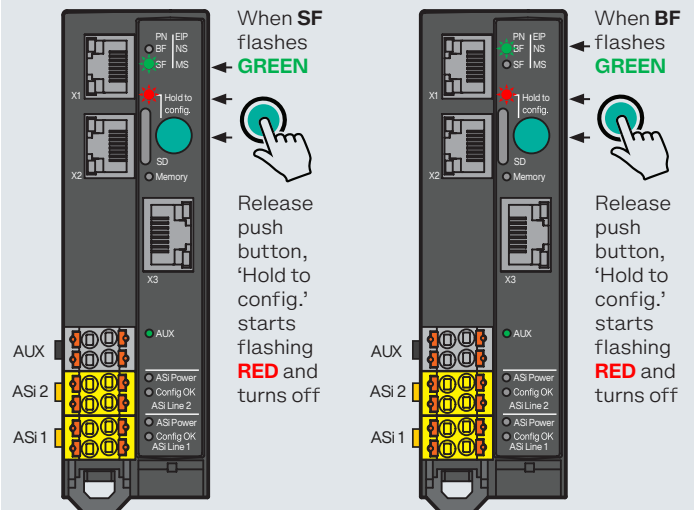
PROFINET



Step
3

EtherNet/IP

PROFINET



Click or Scan QR code for
VBG-EP1-KE5-D/DMD - ASI-3 Gateway full manual