

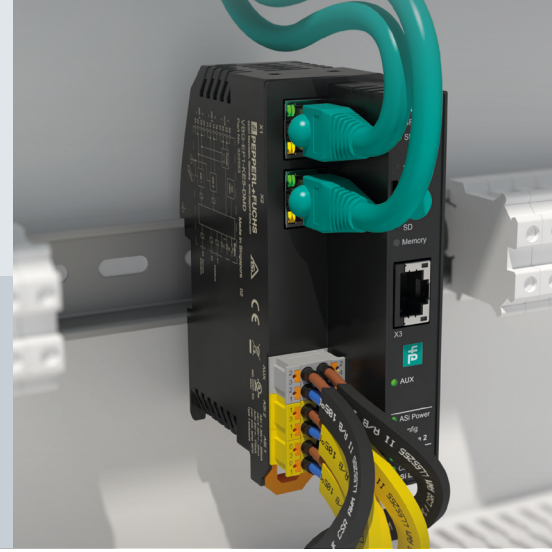
IP Address Assignment to AS-Interface Gateway VBG-EP1-KE5-D/DMD

Quick Start Guide



Click or Scan

EtherNet/IP™



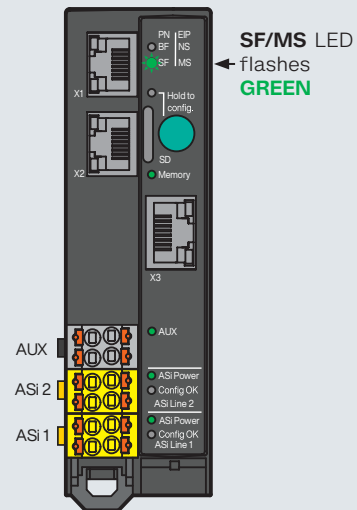
This Quick Start Guide explains the assignment of and IP address to the VBG-EP1-KE5-D/DMD for EtherNet/IP communication with the PLC

Setting the IP Address for VBG-EP1-KE5-D/DMD for EtherNet/IP with DHCP

To assign an IP address, you need the BootP DHCP tool, a freeware from Rockwell Automation. If the BootP DHCP is not installed, it must be downloaded and installed before proceeding.

The basic version can be downloaded free of charge. First, verify that the VBG-EP1-KE5-D/DMD is set to EtherNet/IP and not to PROFINET.

The MS LED should be flashing and all power indicators should be solid green (see figure on the right). If this is not the case, then refer to the Quick Start Guide for setting the protocol to EtherNet/IP.



Click or Scan QR code for
**BootP DHCP EtherNet/IP
commissioning tool**



Click or Scan QR code for
**VBG-EP1-KE5-D/DMD
– ASI-3 Gateway full manual**

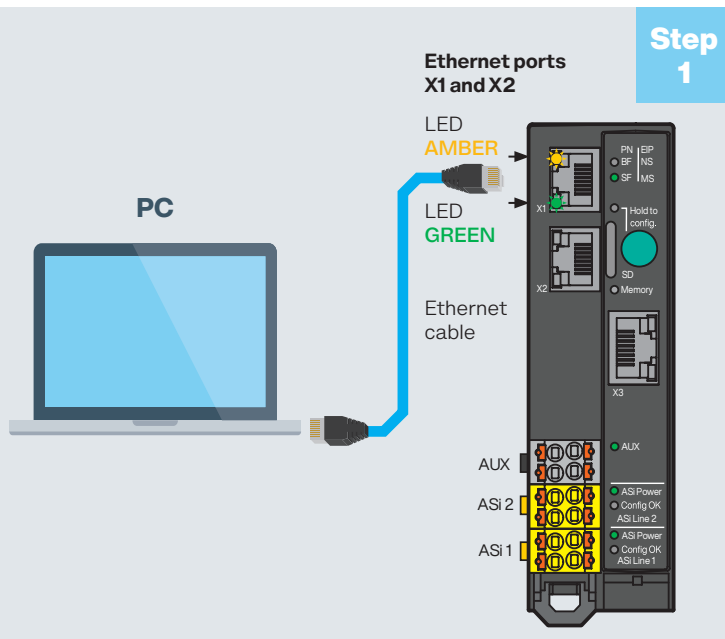


Procedure

- 1 Connect an Ethernet cable from your PC Ethernet adapter to the Ethernet port X1 or X2 located on the front top left of the VBG-EP1-KE5-D/DMD.

Verify the link light is solid green, as shown in the figure to the right.

The amber link light flashes when there is a data transfer between the two ports.



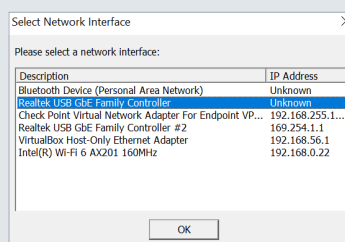
Step 1

- 2 Open the BootP DHCP tool software and select the appropriate network interface.

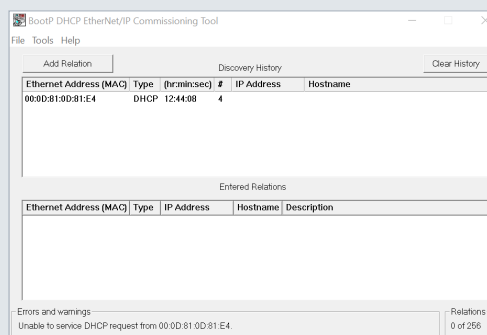
The BootP DHCP relation screen will then appear.

Wait a few minutes until the X1/X2 MAC address of the VBG-EP1-KE5-D/DMD gateway appears in the Discovery History.

The X1/X2 MAC address can be found on the product label on the left side of the gateway.

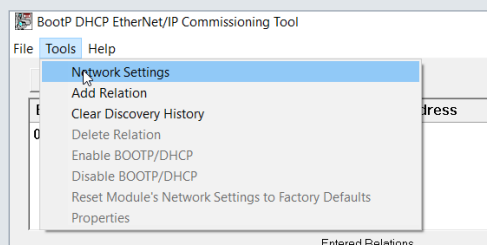


Select the appropriate network interface

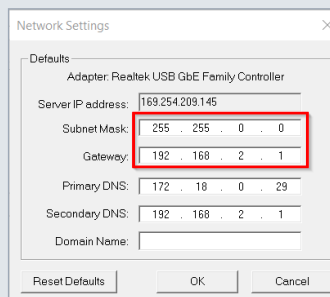


MAC address

- 3 Double check that the Subnet Mask and Gateway are set correctly for your EtherNet/IP network.



EtherNet/IP network

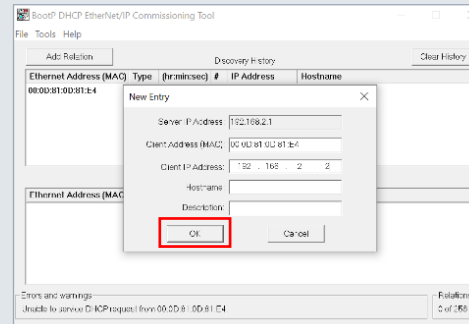


Subnet Mask and Gateway

Step 3

- 4 A double click on the MAC address in the Discovery History opens the New Entry window, where the desired IP address for the VBG-EP1-KE5-D/DMD can be assigned to the MAC address.

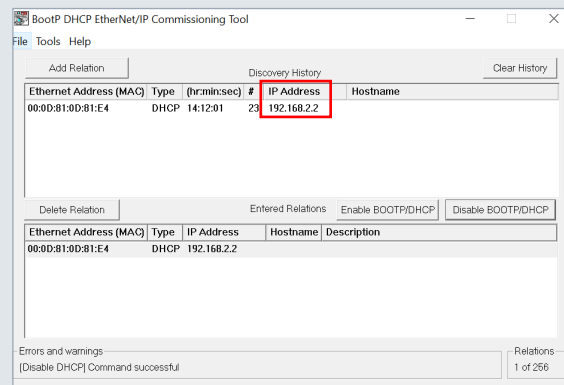
Then click OK.



← Click OK

- 5 After the assignment has been made, wait up to one minute for the IP address to be set. If the IP address is set correctly, it will be entered and the Discovery History will stop counting.

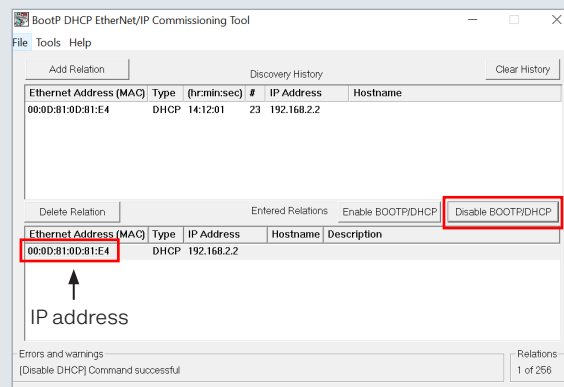
If DHCP fails, check your network settings and make sure the same Subnet and Gateway are set correctly.



← IP address

- 6 Now select the IP address that appears in the Relations field and click Disable BOOTP/DHCP.

Make sure the PLC is **not connected** to the ASi gateway, otherwise the Disable BOOTP/DHCP button will not work.

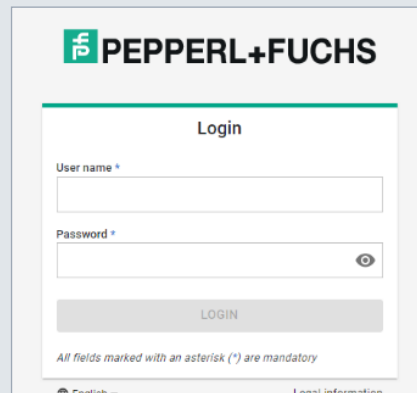


← Disable BOOTP/DHCP

- 7 The IP address has been assigned.

To test whether the assignment was successful, enter the same IP address in a web browser, which should take you to the VBG-EP1-KE5-D/DMD gateway login page.

The default user name and password are listed on the side sticker of the VBG-EP1-KE5-D/DMD gateway.



← The default user name and password are listed on the side sticker of the unit

Your automation, our passion.

Explosion Protection

- Intrinsic Safety Barriers
- Signal Conditioners
- FieldConnex® Fieldbus Infrastructure
- Remote I/O Systems
- Electrical Explosion Protection Equipment
- Purge and Pressurization Systems
- HMI Systems
- Mobile Computing and Communications
- HART Interface Solutions
- Surge Protection
- Wireless Solutions
- Level Measurement

Industrial Sensors

- Proximity Sensors
- Photoelectric Sensors
- Industrial Vision
- Ultrasonic Sensors
- Rotary Encoders
- Positioning Systems
- Inclination and Acceleration Sensors
- Vibration Sensors
- Industrial Ethernet
- AS-Interface
- IO-Link
- Identification Systems
- Displays and Signal Processing
- Connectivity

www.pepperl-fuchs.com

Subject to modifications • © Pepperl+Fuchs
Printed in the Canada • Part. No. 000000 12/22 00



Pepperl+Fuchs Quality

Download our latest policy here:

www.pepperl-fuchs.com/quality