

Installation Guide

Pepperl+Fuchs RFIDControl for UHF Handheld IUT-HH4x-* Installation Guide



Introduction

The purpose of this installation guide is to show how to install RFIDControl on the UHF handheld devices IUT-HH41-FR*, IUT-HH42-FR* or IUT-HH43-FR*. The following description refers to a Windows 10 system.

Requirements

- You are using a compatible UHF Handheld (IUT-HH41-FR*, IUT-HH42-FR* or IUT-HH43-FR*).
- The handheld must be placed in the docking station, which is connected via USB to your computer.
- The Windows Mobile Device Manager must be installed on your computer.

Installation of Windows Mobile Device Manager

The latest version of the Windows Mobile Device Manager can be downloaded for the Microsoft website free of charge: <https://www.microsoft.com/en-us/download/details.aspx?id=3182>. Follow the installation instructions to complete the installation.

Information:

Note: Windows Mobile Device Manager was designed for Windows Vista but can also be installed on current Microsoft operating systems, e.g. Windows 7 or Windows 10. You may need to adjust your settings to do this. Help for the setup on Windows 10 and troubleshooting can be found here:

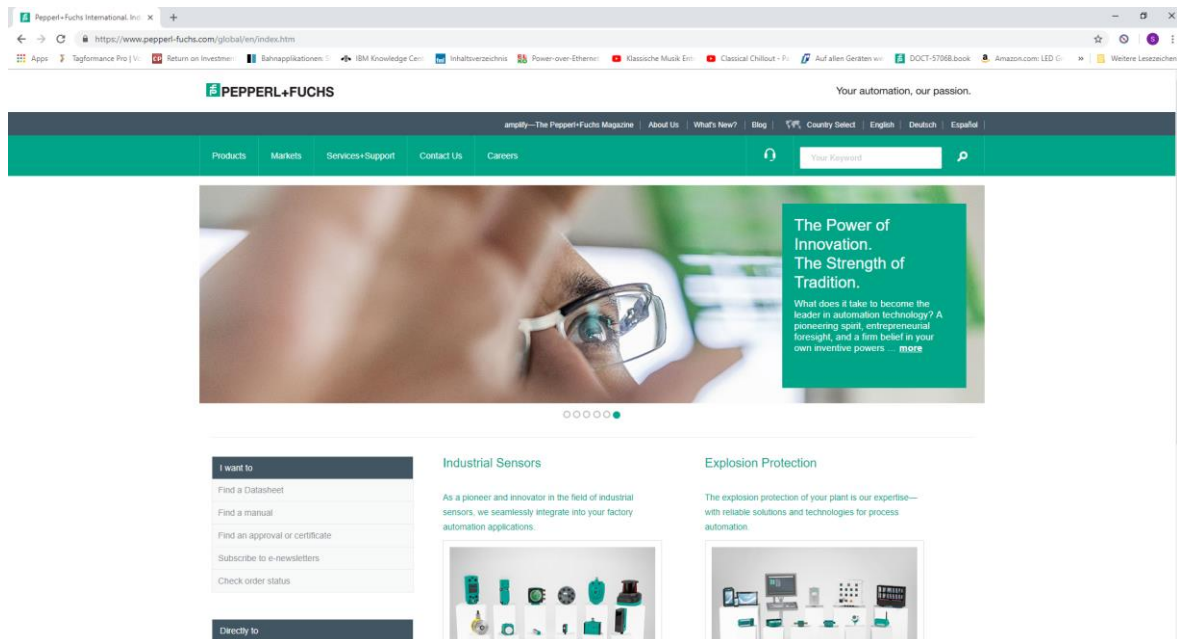
https://answers.microsoft.com/en-us/windows/forum/windows_10-hardware/windows-mobile-device-center-on-windows-10-1703/efbd28aa-e537-4258-8391-938e715847e2.

Installation Guide

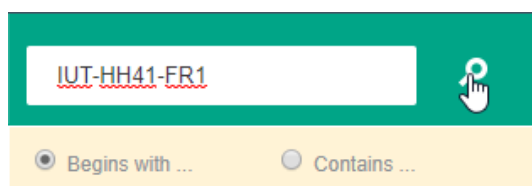
Download Pepperl+Fuchs RFIDControl

To get the latest version of RFIDControl for your UHF handheld, go to our website:

<https://www.pepperl-fuchs.com/>

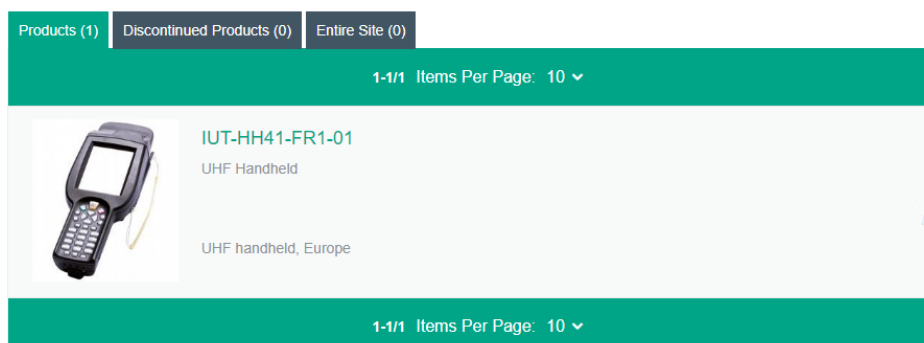


Enter the name or article number of your device into the search bar on the Pepperl+Fuchs website, e.g. IUT-HH41-FR1.



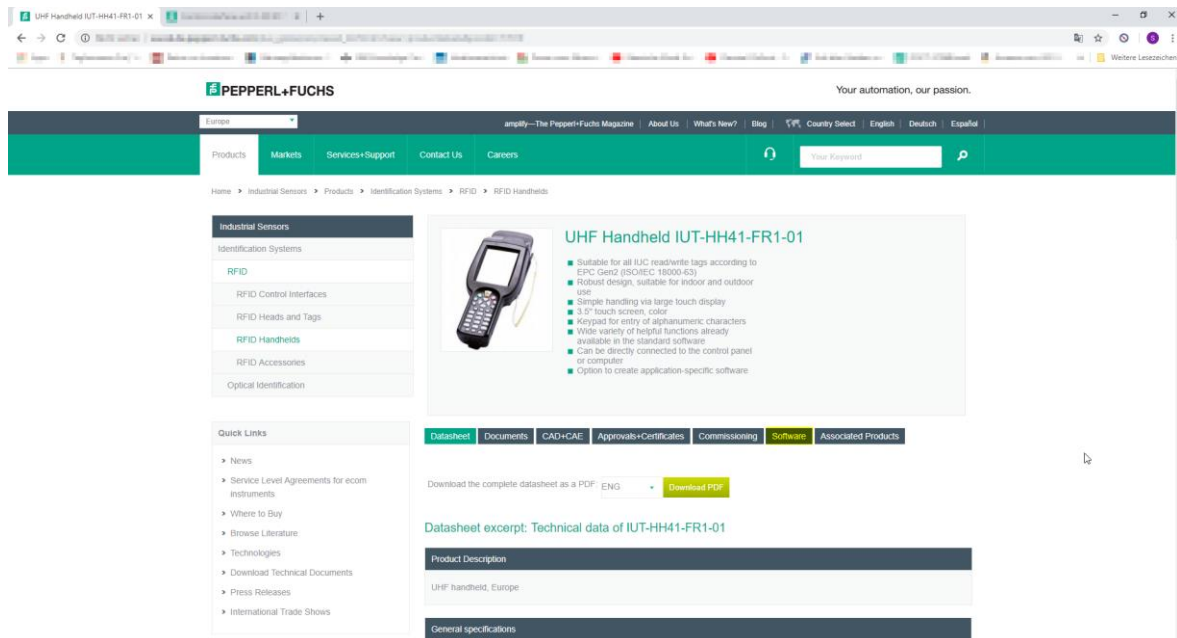
Select your device from the search results.

Results for IUT-HH41-FR1

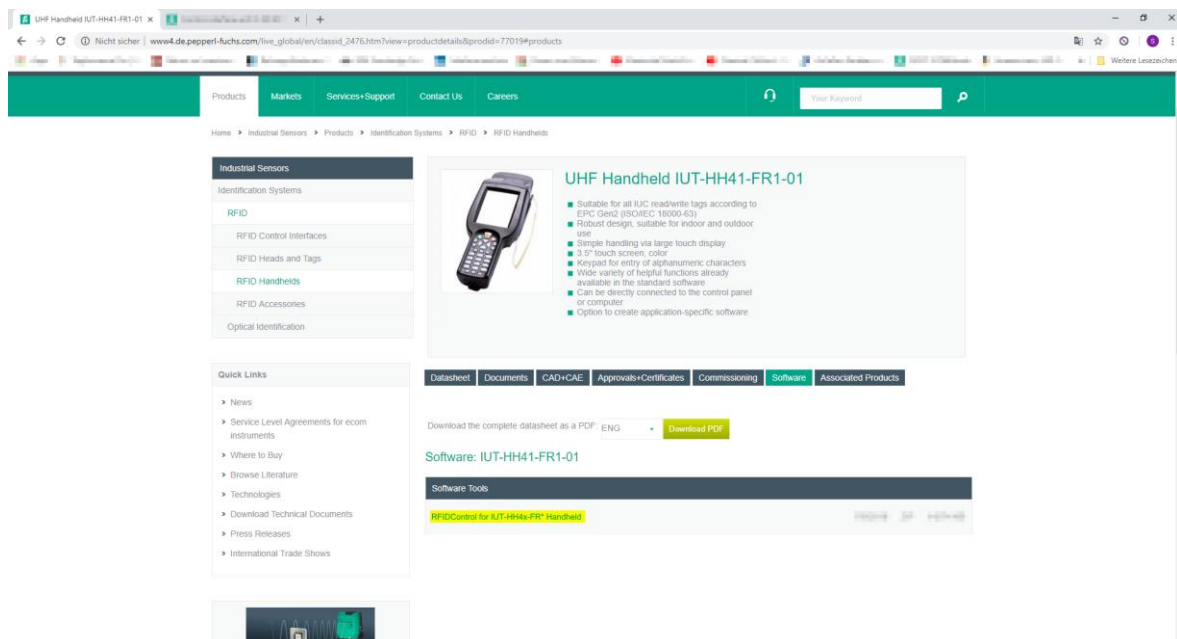


Installation Guide

Click the “Software” button.



Click “RFIDControl for IUT-HH4x-FR* UHF Handheld” in the category “Software Tools” to download the latest software.



The download contains a pak-File.

Installation Guide

Installation on your Handheld device

To install the RFIDControl software to your handheld, you need to copy the downloaded pak-file to the flash memory of the handheld device. Therefore, connect the docking station of your handheld to your computer using the USB cable and put the handheld into the docking station.

The Windows Mobile Device Manager should start up automatically when the handheld device is connected. If not, start the Windows Mobile Device Manager manually. Proceed without setting up the device.

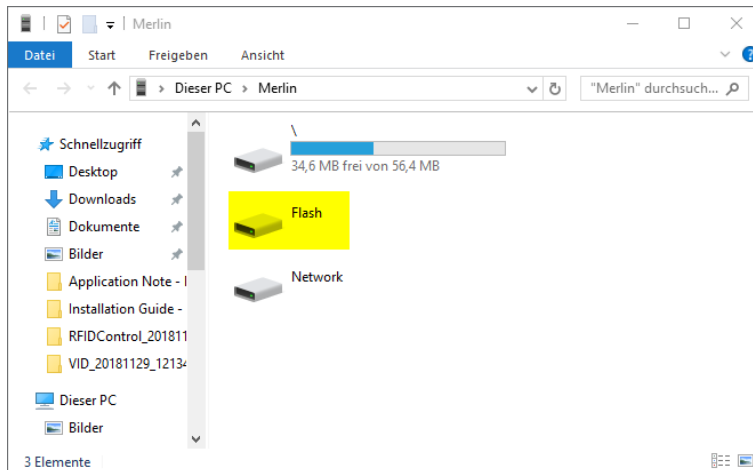


Click "File Management" and search device contents.

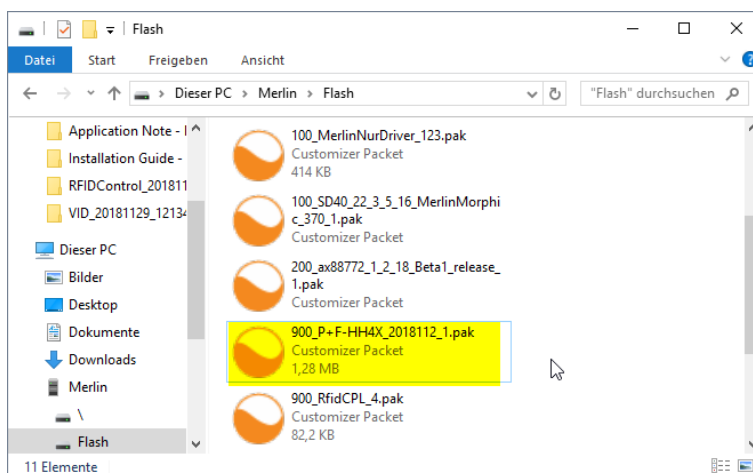


Installation Guide

This should open the handhelds file directory. Open the “Flash” memory. Data in the flash memory is is persistently stored, even after removing the battery.



Copy the downloaded pak-file into the Flash memory. If you have installed older versions before, remove older pak-files which name starts with “900_P+F-HH4C_...”.



Pak-files are customizer packets that will be loaded during the boot up of the operating system. It will create a folder with the RFIDControl software on your device, create a shortcut and change a few settings. In order to make the changes effective, the operating system must be reloaded. Therefore, press the power button on your UHF handheld and open the shutdown menu. Select “Reload Windows CE” and confirm with “Reload”.

After rebooting the device you are done with the installation of RFIDControl. You can start the program by doubleclicking the shortcut on your desktop.

You may need to adjust some settings according to personal needs, such as date/time, regional settings sounds or network settings. You can change these settings in the Windows CE control panel.

Installation Guide

