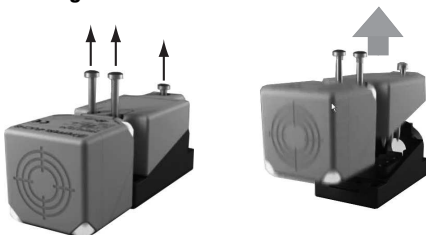


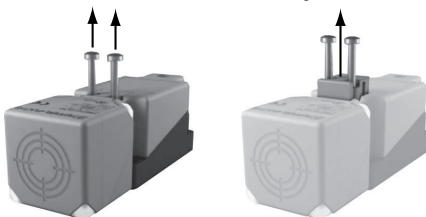
1 Lösen des Sensors vom Unterteil
Removing of the sensor from the base



3 Schrauben lösen
Loosen and lift 3 screws

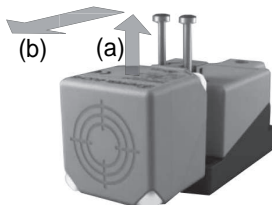
Sensor von Unterteil abziehen
Remove sensor from base

2 Einstellen der Sensorfläche / Adjust sensor face



2 Schrauben lösen
Loosen and lift 2 screws

Klemmstück und Schrauben anheben
Lift both clamp and screws



Sensorkopf anheben (a) und nach vorne aus der Halterung ziehen (b)
Lift sensor head (a) and pull forward from the housing (b)



Sensorkopf um 90° schwenken
Swivel Sensor head by 90°



Sensorkopf in die gewünschte Richtung drehen (vorn, oben, unten, rechts, links). Klemmstück und Schrauben anheben. Sensorkopf in Gehäusehalterung einsetzen. Klemmstück und Schrauben fixieren.

Rotate sensor head in the desired direction (front, up, down, right, left). Lift clamp and screws. Replace the sensor head into the housing support. Insert clamp and tighten screws.

Note

| | |
|-----------------------------------|---|
| UL Approval E87056 | <p><u>Conduit connections</u> Conduit connections must only be made to metal base units identified by a U3 or U4 in the model number. Sensors with a plastic base, identified by a U1 or U2 in the model number, must not be connected to conduit.</p> |
| | <p><u>Cord grip</u> If a cord grip is used it must be LISTED (QCRV) in accordance with the cord grip manufacturers specifications.</p> |