

Merkmale

- Reflektor für Messbereiche bis 300 m

Features

- Reflector with measuring range up to 300 m

Adressen Addresses



Pepperl+Fuchs GmbH
68301 Mannheim · Germany
Tel. +49 621 776-4411
Fax +49 621 776-27-4411
E-mail: fa-info@de.pepperl-fuchs.com

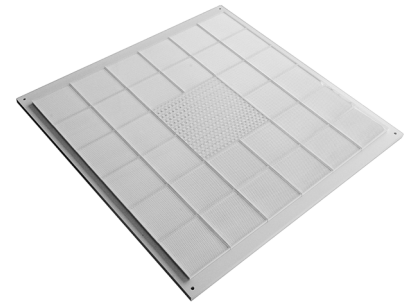
Worldwide Headquarters
Pepperl+Fuchs GmbH · Mannheim · Germany
E-mail: fa-info@de.pepperl-fuchs.com

USA Headquarters
Pepperl+Fuchs Inc. · Twinsburg · USA
E-mail: fa-info@us.pepperl-fuchs.com

Asia Pacific Headquarters
Pepperl+Fuchs Pte Ltd · Singapore
E-mail: fa-info@sg.pepperl-fuchs.com
Company Registration No. 199003130E

www.pepperl-fuchs.com

Zubehör Accessories



CE

Bestellbezeichnung Model Number

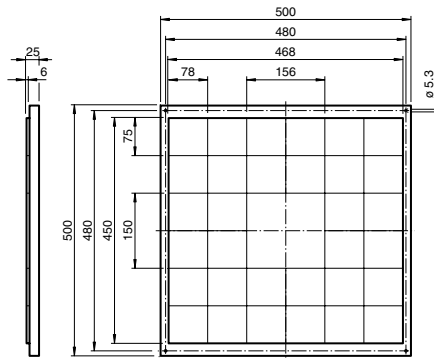
REF-VDM01

Reflektor für Entfernungsmessgeräte
Reflector for distance measurement devices

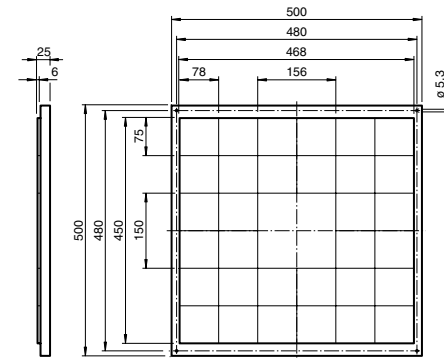
Part-No: 215108 EDM: 45-2800A
Date: 2011-03-30 DIN A3 -> DIN A7



Abmessungen



Dimensions



Elektrischer Anschluss

Electrical connection

Technische Daten

Allgemeine Daten

Bauform rechteckig

Umgebungsbedingungen

Umgebungstemperatur -30 ... 60 °C (-22 ... 140 °F)

Mechanische Daten

Material Reflexionsfolie, Reflektoren PMMA, Untergrundplatte Kunststoff

Abmessungen 500 mm x 500 mm

Befestigung Befestigungsbohrungen

Passende Serien

Serie VDM100

Technical data

General specifications

Construction type rectangular

Ambient conditions

Ambient temperature -30 ... 60 °C (-22 ... 140 °F)

Mechanical specifications

Material Reflective tape, PMMA reflectors plastic base

Dimensions 500 mm x 500 mm

Mounting mounting holes

Suitable series

Series VDM100