

Merkmale

- Haltewinkel
- Robuste Ausführung
- Einfache und schnelle Montage
- Rohrmontage
- Schwenkbar ohne zusätzliche Montagehilfe

Features

- Mounting bracket
- Sturdy construction
- Simple and fast mounting
- Pipe mounting
- Slewable without additional mounting aid

Adressen Addresses



Pepperl+Fuchs GmbH
68301 Mannheim · Germany
Tel. +49 621 776-4411
Fax +49 621 776-27-4411
E-mail: fa-info@de.pepperl-fuchs.com

Worldwide Headquarters
Pepperl+Fuchs GmbH · Mannheim · Germany
E-mail: fa-info@de.pepperl-fuchs.com

USA Headquarters
Pepperl+Fuchs Inc. · Twinsburg · USA
E-mail: fa-info@us.pepperl-fuchs.com

Asia Pacific Headquarters
Pepperl+Fuchs Pte Ltd · Singapore
E-mail: fa-info@sg.pepperl-fuchs.com
Company Registration No. 199003130E

www.pepperl-fuchs.com

Zubehör Accessories



**Bestellbezeichnung
Model Number**

OMH-SLCT-06

Schwenkhalterung

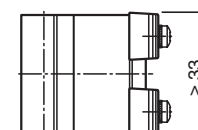
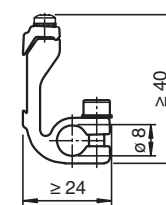
Swivel Bracket

Part-No: 258532
Date: 2013-11-18

EDM: 45-4382
DIN A3 -> DIN A7



Abmessungen/Dimensions



Technische Daten

Mechanische Daten

Material	Aluminium
Masse	ca. 28 g

Allgemeine Informationen

Lieferumfang	Haltewinkel ; Schraubensatz
--------------	-----------------------------

Passende Serien

Safety Serie	SLCT SLCS
--------------	--------------

Technical data

Mechanical specifications

Material	aluminum
Mass	approx. 28 g

General information

Scope of delivery	Mounting bracket ; Screw kit
-------------------	------------------------------

Suitable series

Safety Series	SLCT SLCS
---------------	--------------