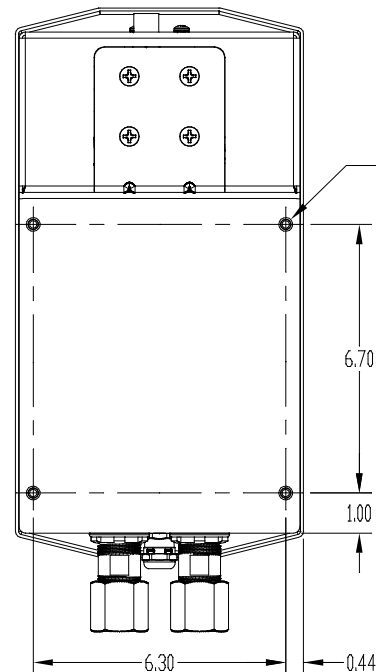
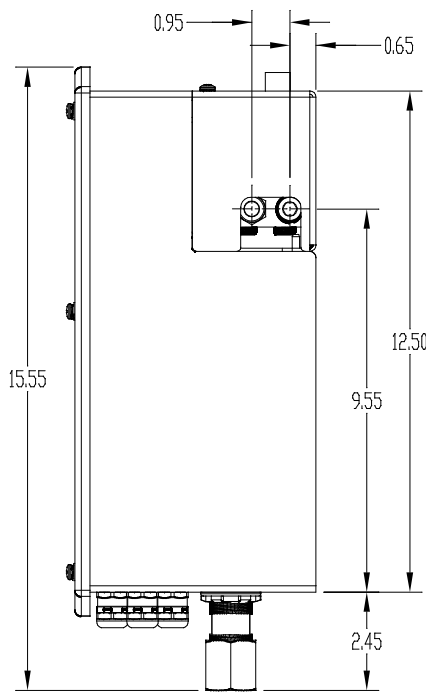
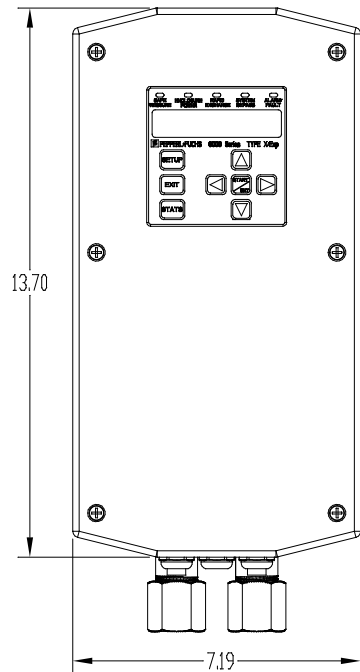
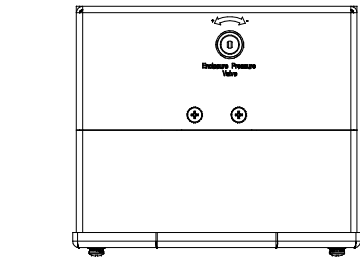
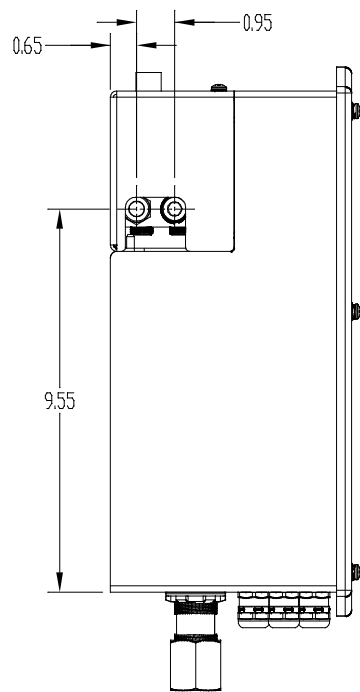
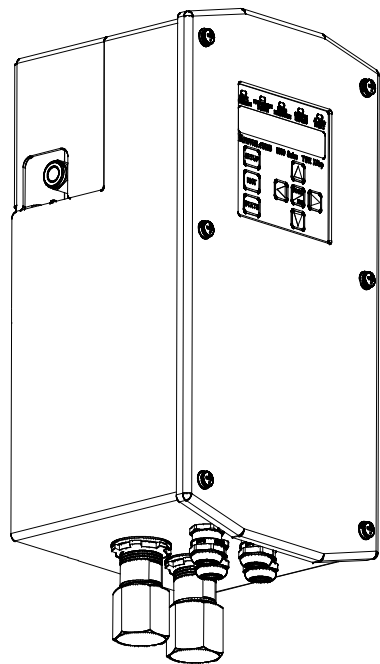
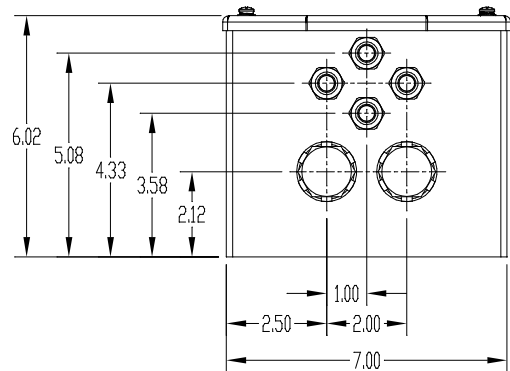
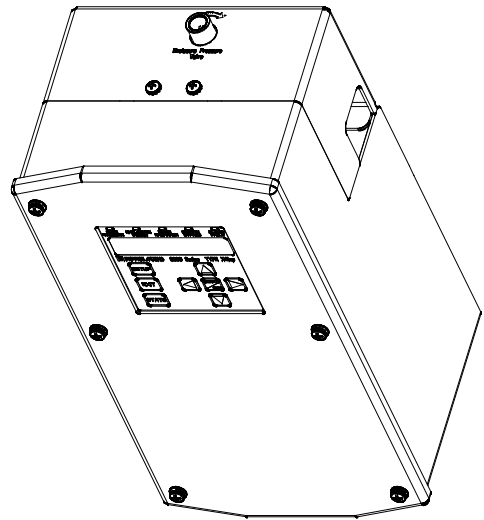



Note:
All dimensions are in inches and for reference only.



4x
1/4"-20
.25 [6.0] deep



Confidential according to ISO 16016	Only valid as long as released in EDM or with a valid production documentation!		scale: None	date: 4-Nov-2015
 PEPPERL+FUCHS	Mechanical drawing	change notice	respons. US.DAP	CAD-B0C9
	xPurge 6000 Control Unit		approved US.CPR	
			norm	
Twinsburg				sheet 1 of 1