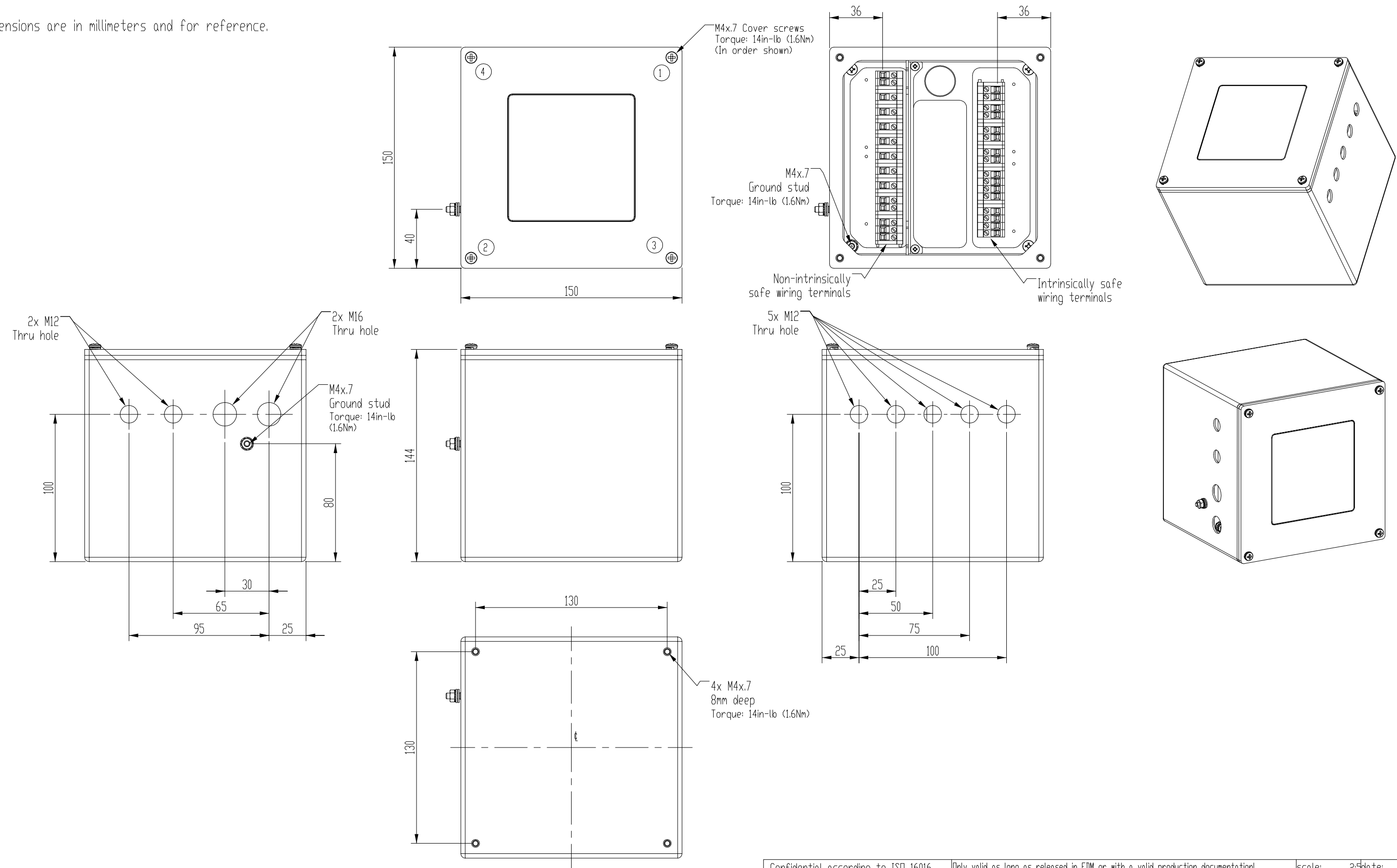



Note:
All dimensions are in millimeters and for reference.



Confidential according to ISO 16016	Only valid as long as released in EDM or with a valid production documentation!	scale:	2:5	date:	8-Mar-16
 PEPPERL+FUCHS	Mechanical drawing 6500-01-EXT1-PNO-LNO	change notice	respons.	US.DAP	CAD-B0D0
			approved	US.CPR	
			norm		
Twinsburg				sheet	1 of 1