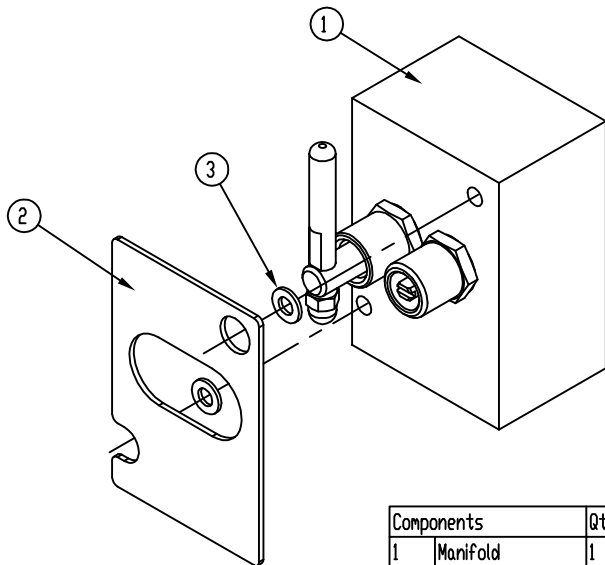
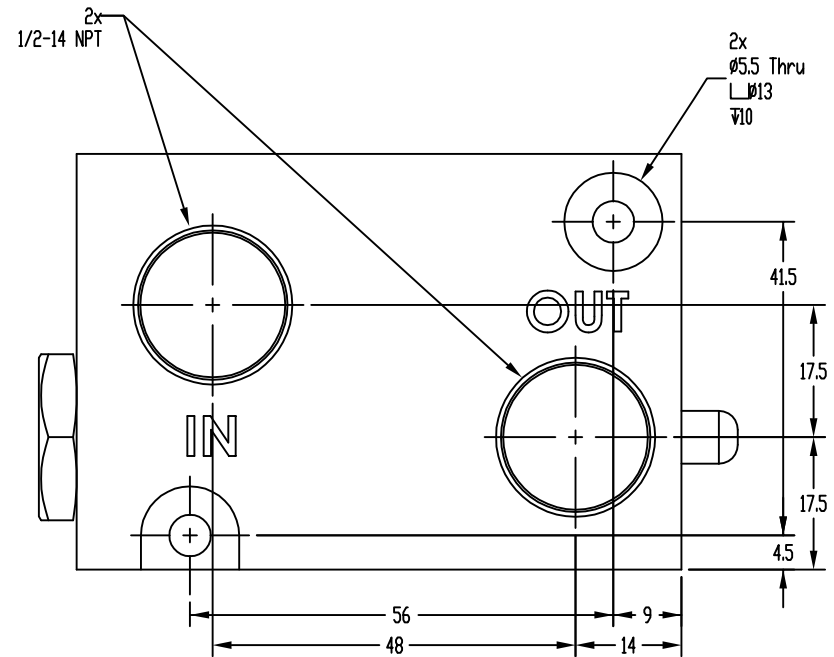
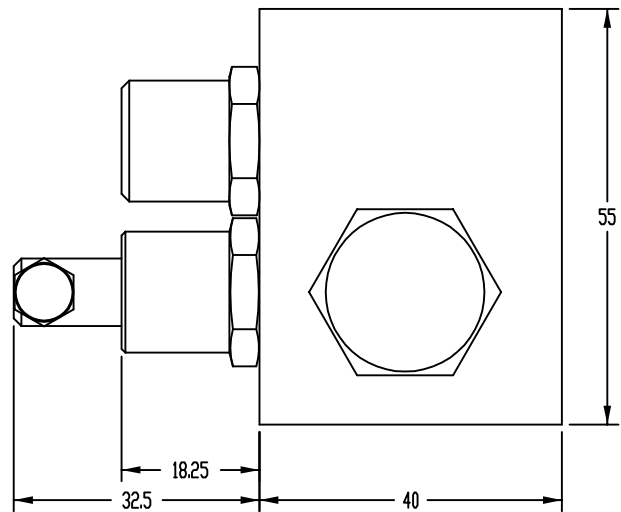
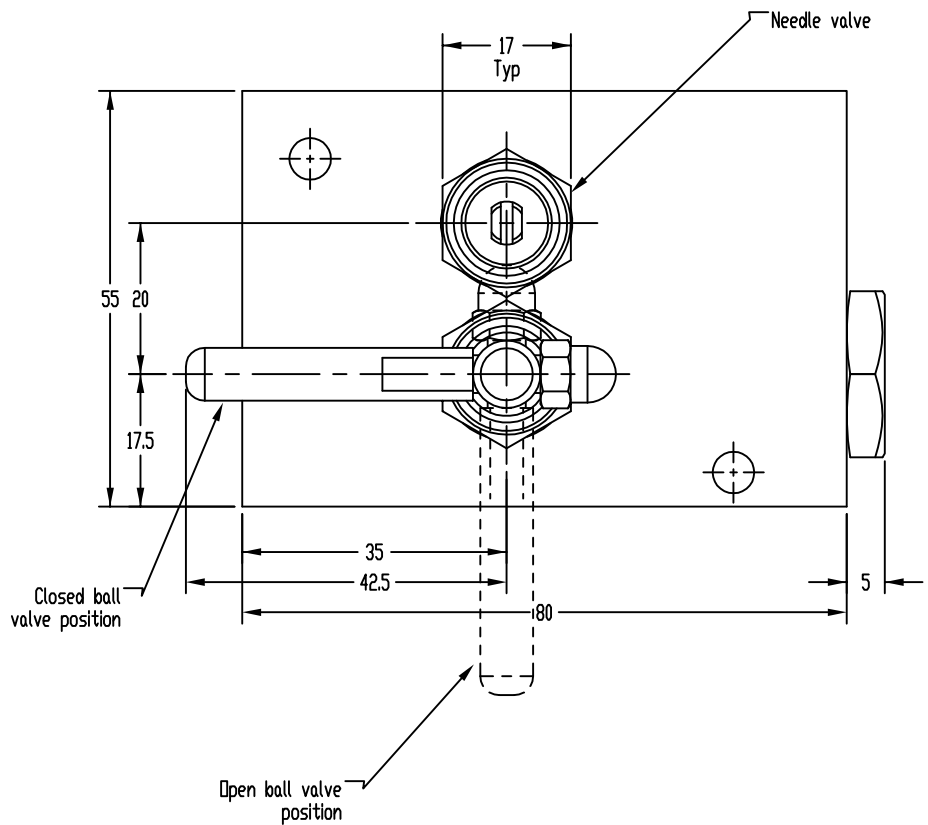
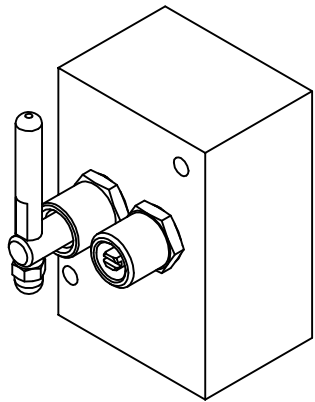



- Notes:
- 1) Dimensions are in millimeters
 - 2) Maximum operating pressure differential: 120PSI (8.27 bar)
 - 3) Media: Air/inert gas
 - 4) Operating temperature: -40°C to +70°C
 - 5) Materials:
 - Body: 6061-T6S1 Aluminum, clear anodized
 - Fittings: 316 Stainless steel
 - Seals: PTFE (Ball) and EPDM
 - Flat gasket: Closed cell silicone



Components	Qty
1 Manifold	1
2 Seal gasket	1
3 Spacer washers	2

Rev	Resp.	Description

Confidential according to ISO 16016		Only valid as long as released in EDM or with a valid production documentation!		scale:	1:1	date: 2018-May-30
 PEPPERL+FUCHS	Mechanical drawing 7500-MAN-MV-01	change notice	respons.	US.DAP	CAD-B0F7	
			approved			
Twinsburg				norm		sheet