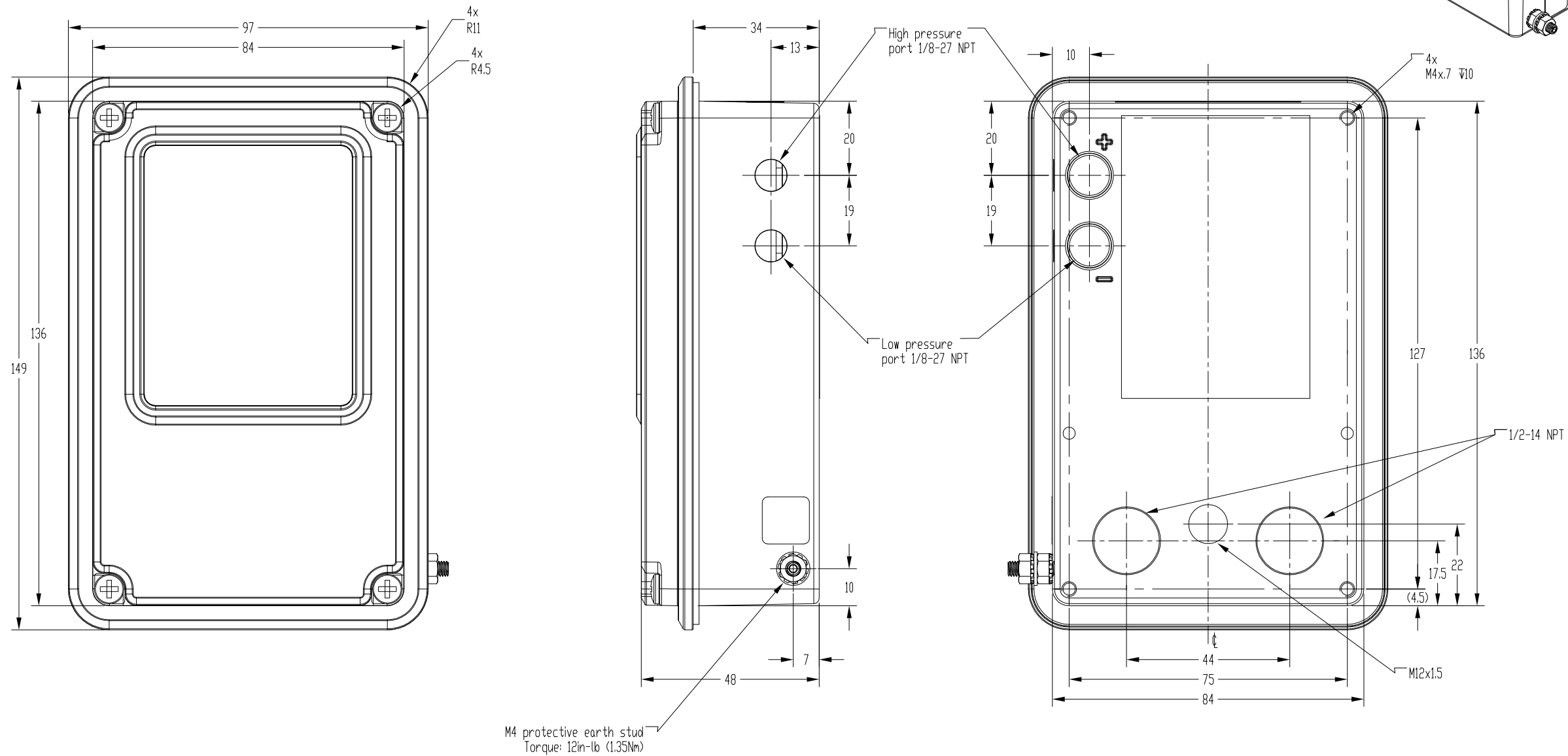

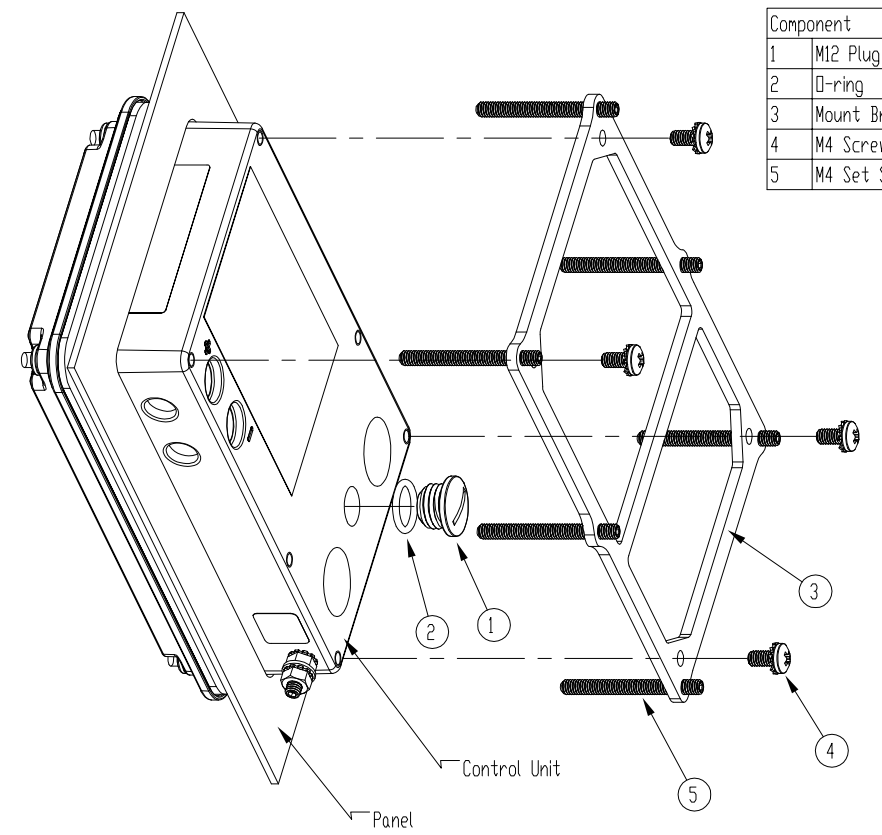
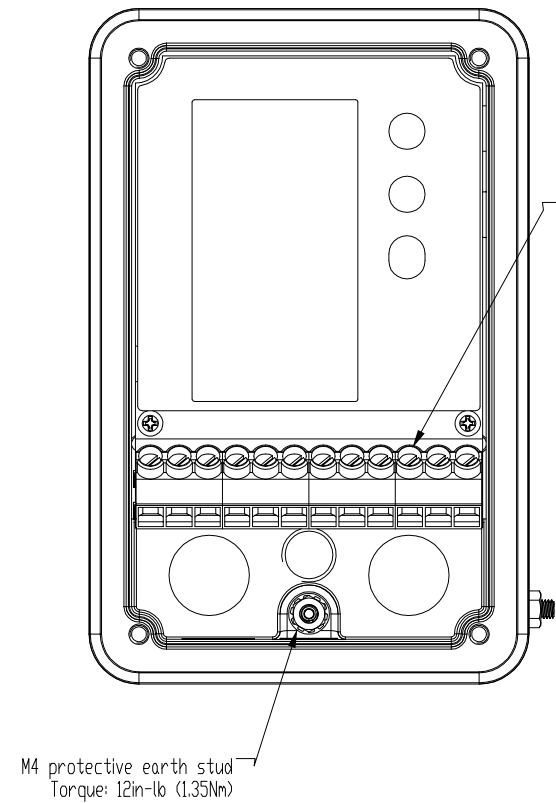
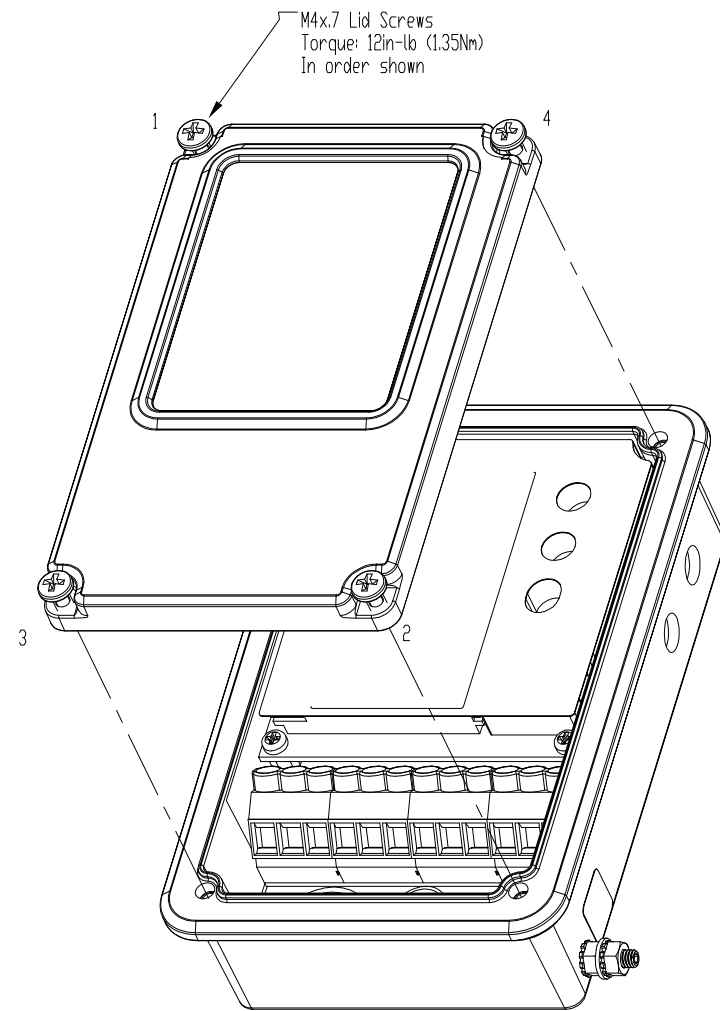


Notes:  
1) Dimensions are in millimeters



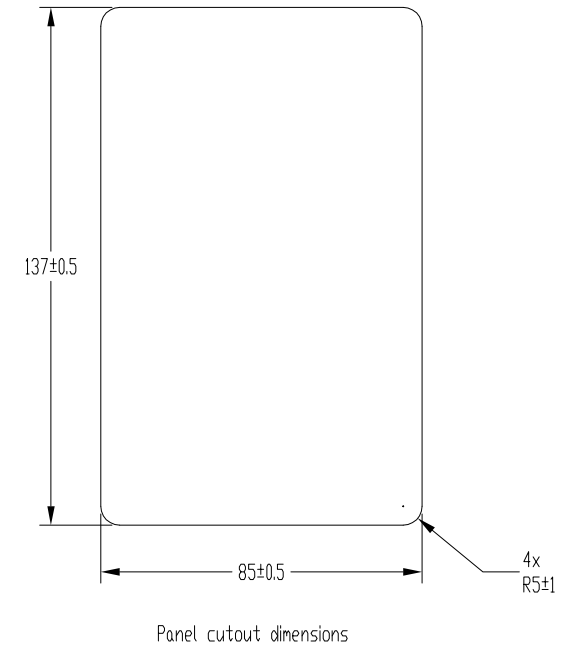
Rev	Resp.	Description

Confidential according to ISO 16016		Only valid as long as released in EDM or with a valid production documentation!			scale:	3:4	date:	2018-May-31
 PEPPERL+FUCHS	Mechanical drawing	7500-01-AA-STD-UNV-PND	change notice	respons.	US.DAP	CAD-B0F9		
				approved				
			Twinsburg			norm		sheet



Component	Qty
1 M12 Plug	1
2 O-ring	1
3 Mount Bracket	1
4 M4 Screw	4
5 M4 Set Screw	6

Installation instruction:  
1) Remove mounting bracket and hardware from control unit.  
2) Back out M4 set screws 2-4 turns (depending on panel thickness)  
3) Insert control unit into panel cutout  
4) Secure mount bracket with the M4 screws. Torque: 12in-lb (1.35Nm)  
5) Tighten the set screws to secure control unit to panel. Torque: 4in-lb (.45Nm)



Rev	Resp.	Description

Confidential according to ISO 16016		Only valid as long as released in EDM or with a valid production documentation!			scale:	3:5	date:	2018-May-31
PEPPERL+FUCHS		Mechanical drawing		change notice	respons.	US.DAP	CAD-B0F9	
		7500-01-AA-STD-UNV-PND			approved			
Twinsburg					norm		sheet	2 of 2