

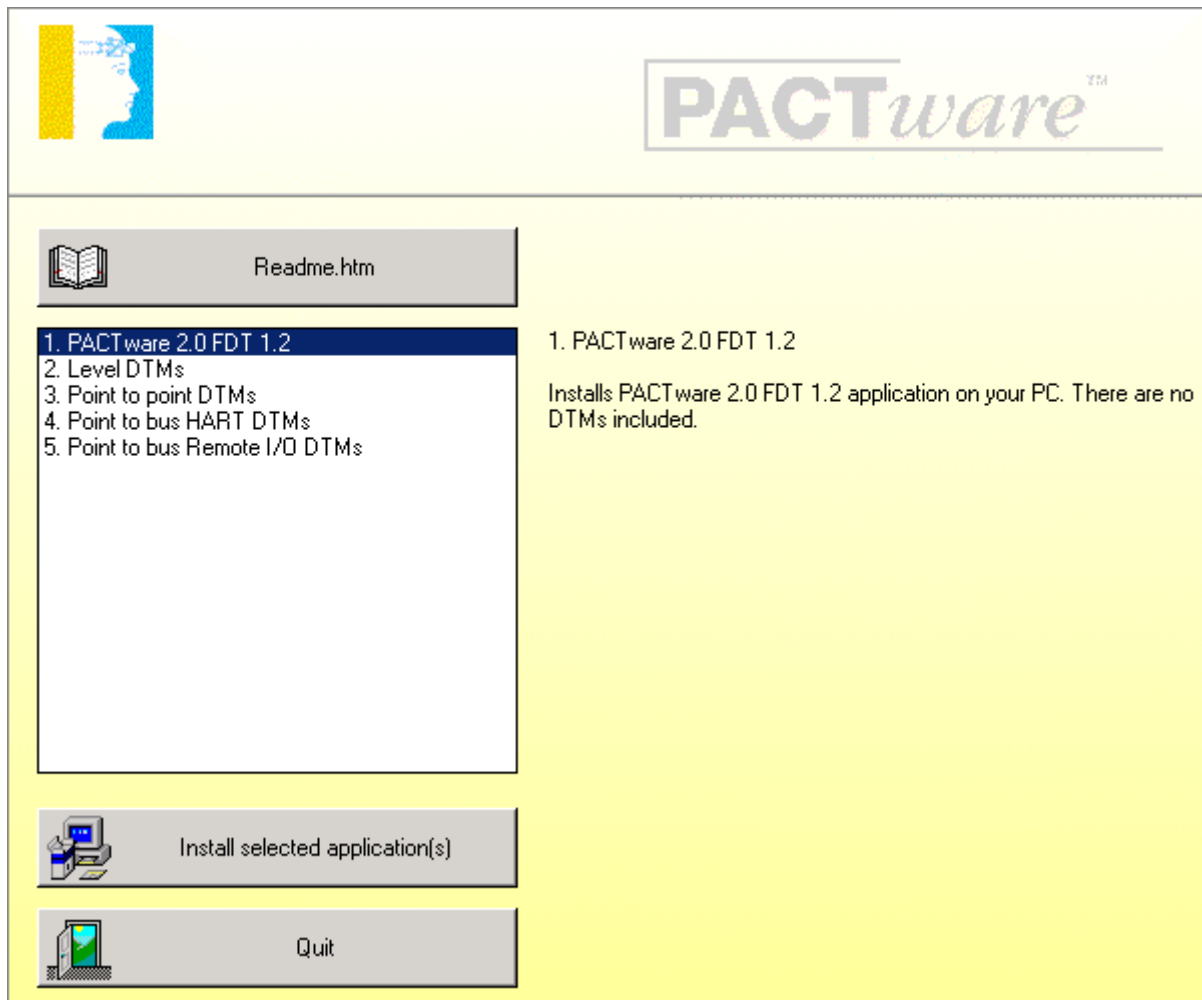
## PACTware Installation guideline

Download the required “DTM collection” from our Product Selector to your Computer.

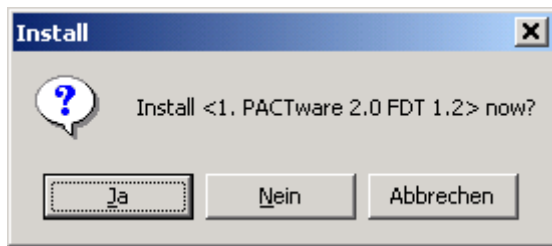
Unpack the “zip” file with a suitable software programme e. g. Winzip or Total Commander.

When the “zip” file is unpacked the directories “PACTware\_setup\_shell”, “PW2\_setup\_hart”, “PW2\_setup\_level”, “PW2\_setup\_PTP”, “PW2\_setup\_remote” and “Readme” will be generated.

In the same directory there is also the file “Autorun.exe”  
Doubleclick to **Autorun.exe** and select at first “PACTware 2.0 FDT 1.2” to install the PACTware Frame Application.

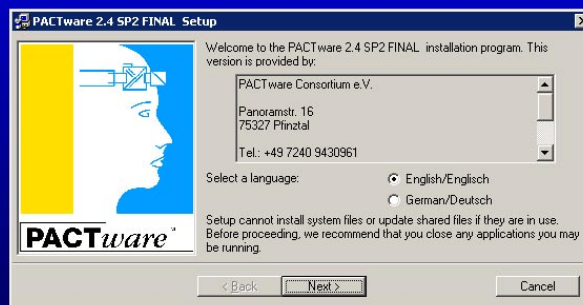


You will be asked now if you want to install „PACTware 2.0“ .  
Confirm with „Ja“.

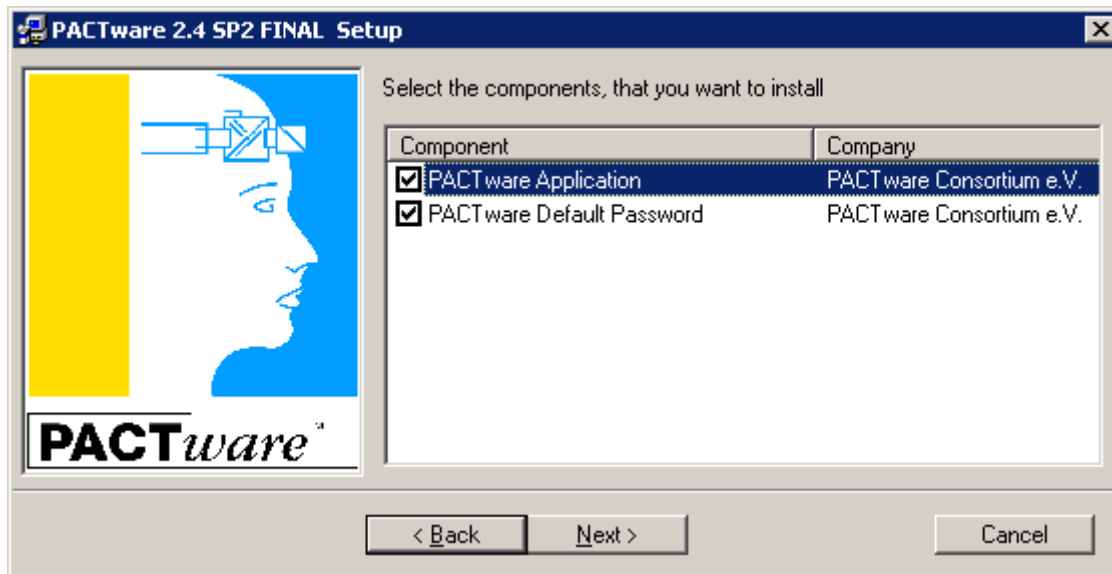


Select the required language and confirm with **Next**.

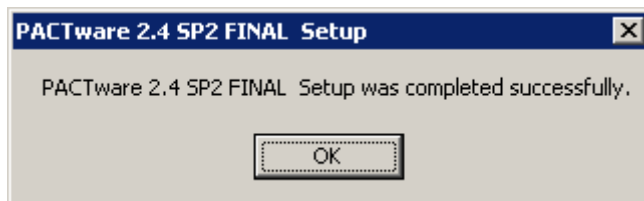
## ***PACTware 2.4 SP2 FINAL Setup***



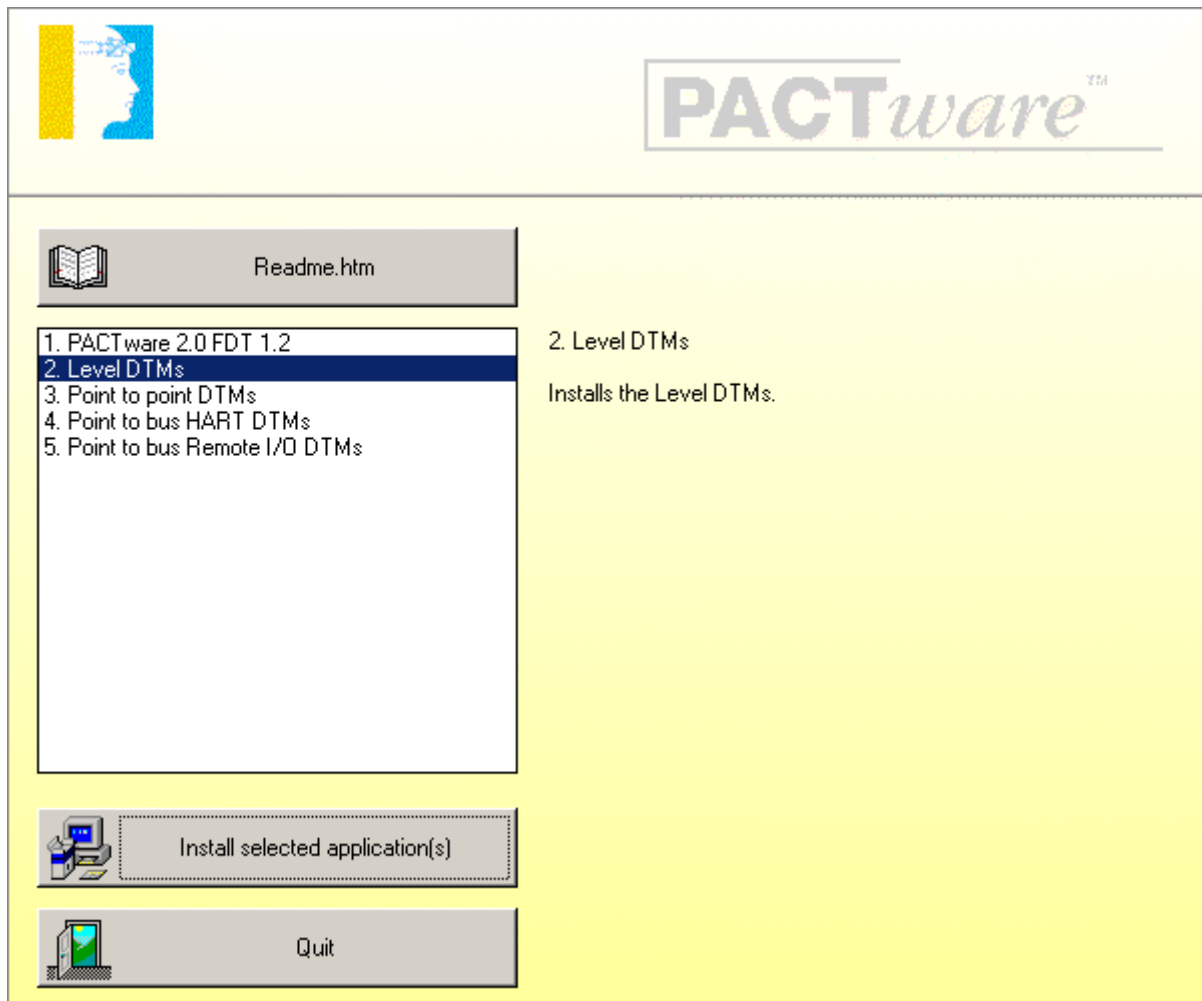
Select „**PACTware Edition2 Application**“ and „**PACTware Default Password**“. Confirm with **“Next”**.



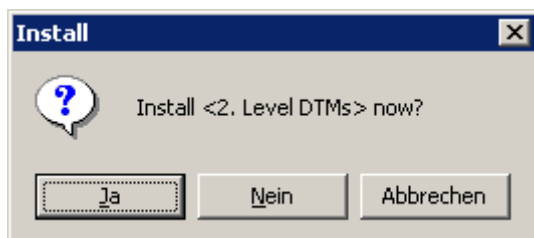
**“PACTware 2.4 ”** will now be installed on your computer. Confirm with **“OK”** when the installation has been finished



Select the DTM packages you want to install e.g. **“Level DTMs”** and confirm with **“Install the selected application”**.  
Do it in the same way with all other DTMs you want to install.



You will be asked now if you want to install the **“Level DTMs”**.  
Confirm with **“Ja”**.

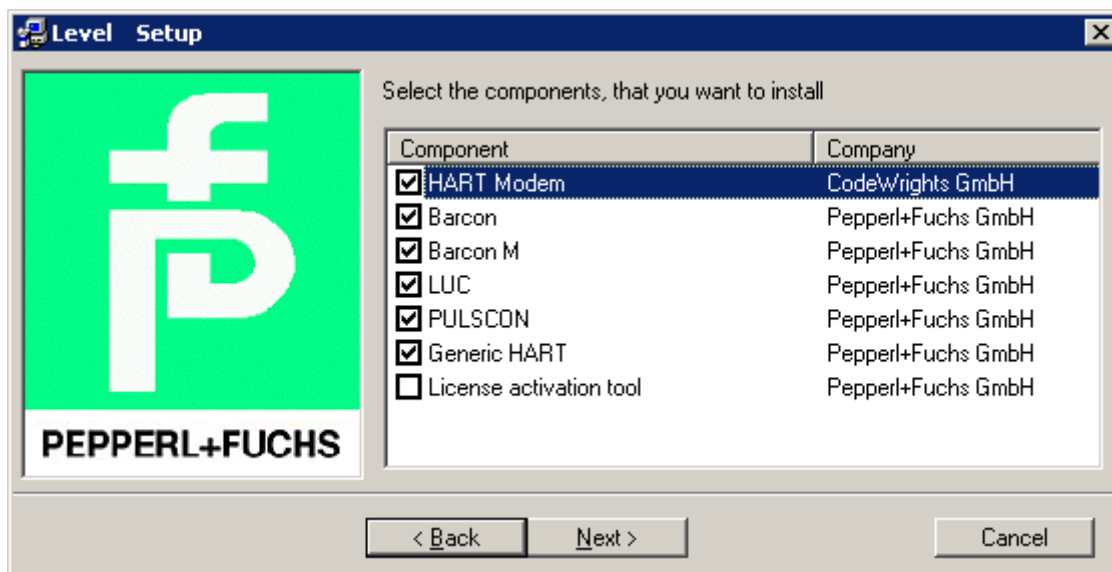


Select the required language and confirm with “Next”.

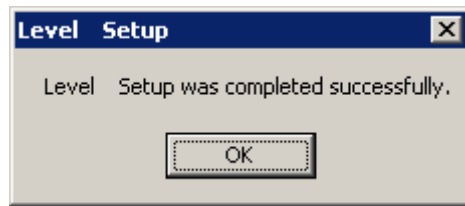
## Level Setup



Select the required DTMs and confirm with “Next”.



The “**Level DTMs**” will now be installed on your computer. Confirm with “**OK**” when the installation has been finished

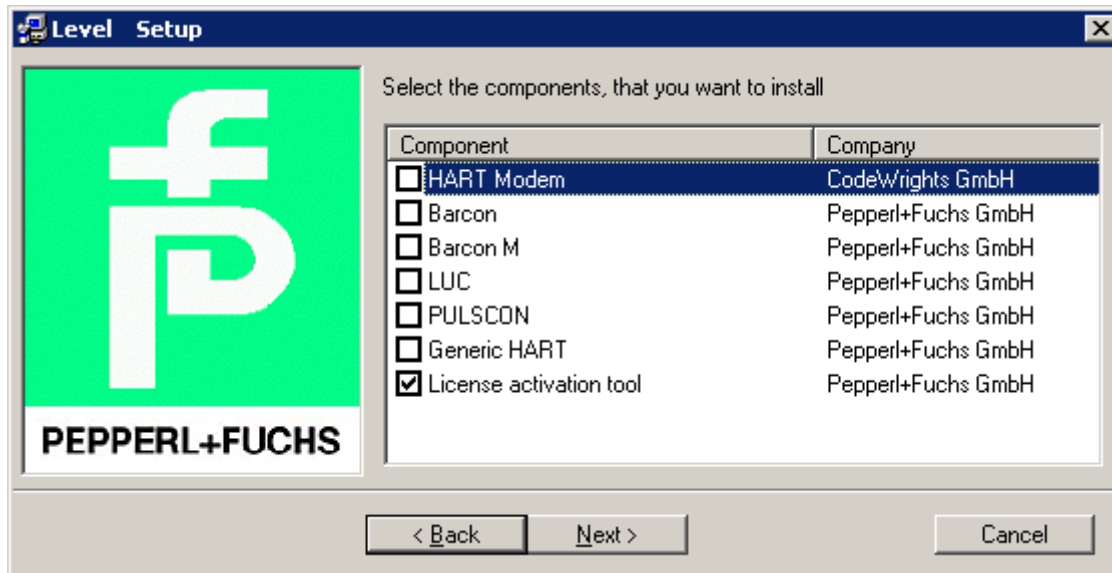


Proceed with the installation of other DTMs if required in the same way as you has done it with the “**Level DTMs**” right now.

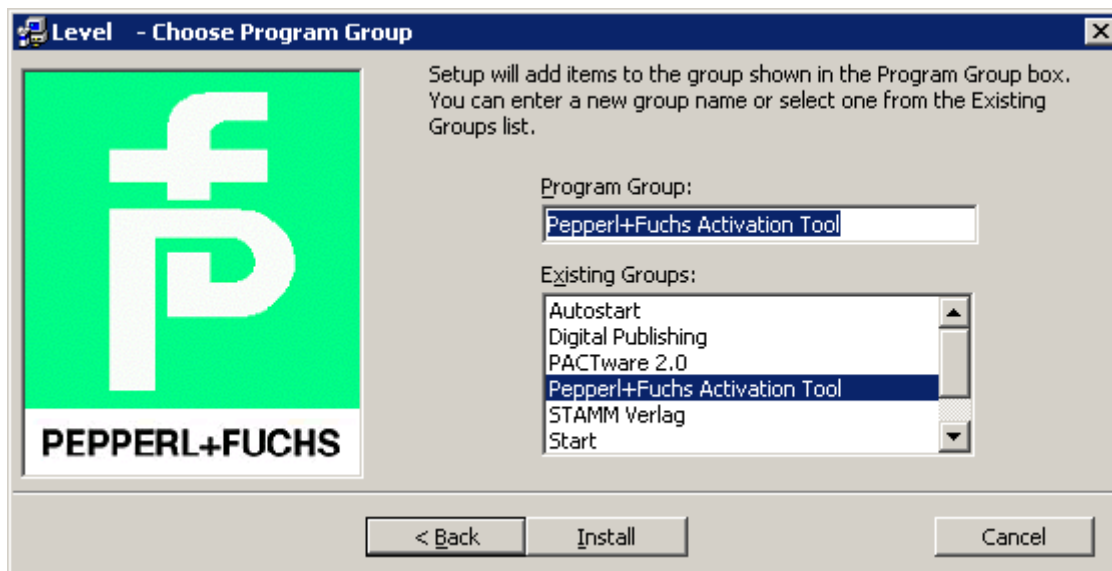
## Installation of the Licence Activation Tool

The installation of the “**Licence Activation Tool**” can be done in connection with the installation of any DTM package e.g. the “**Level DTMs**”.

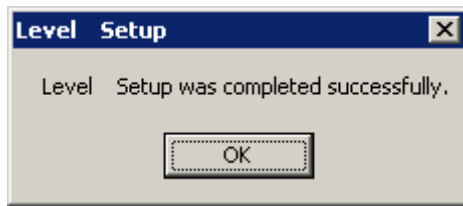
Select “**Licence Activation Tool**” and confirm with “**Next**”.



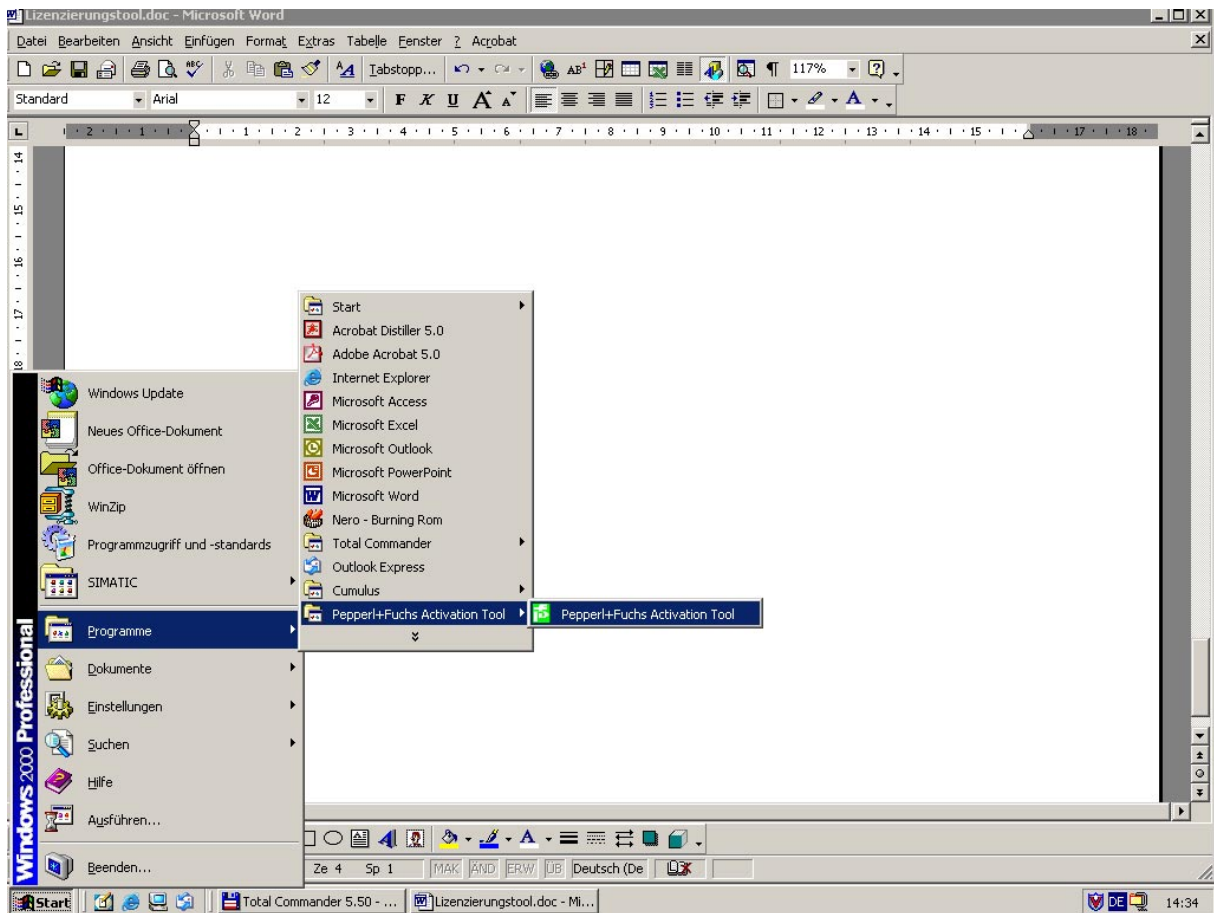
Confirm with “**Install**” when the following screen appear.



The **“Licence Activation Tool”** will now be installed on your computer.  
Confirm with **“OK”** when the installation has been finished

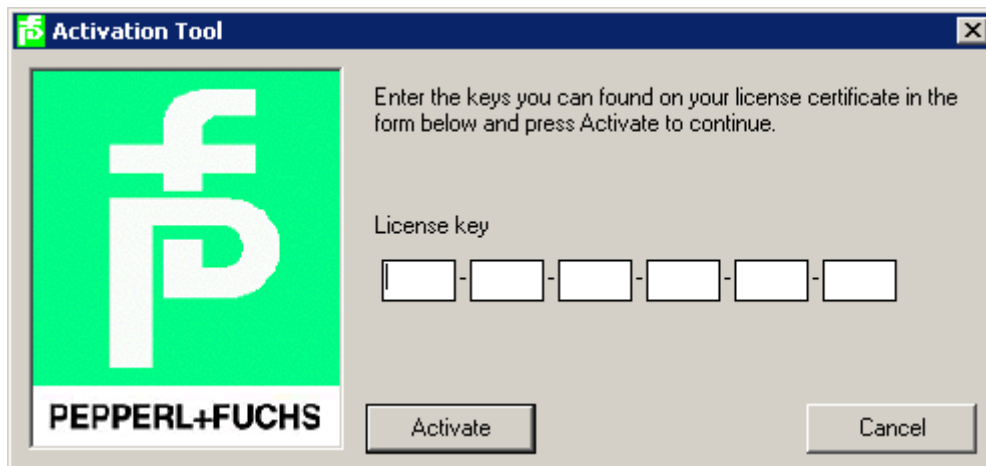


Start the **“Licence Activation Tool”** via the Windows task bar.

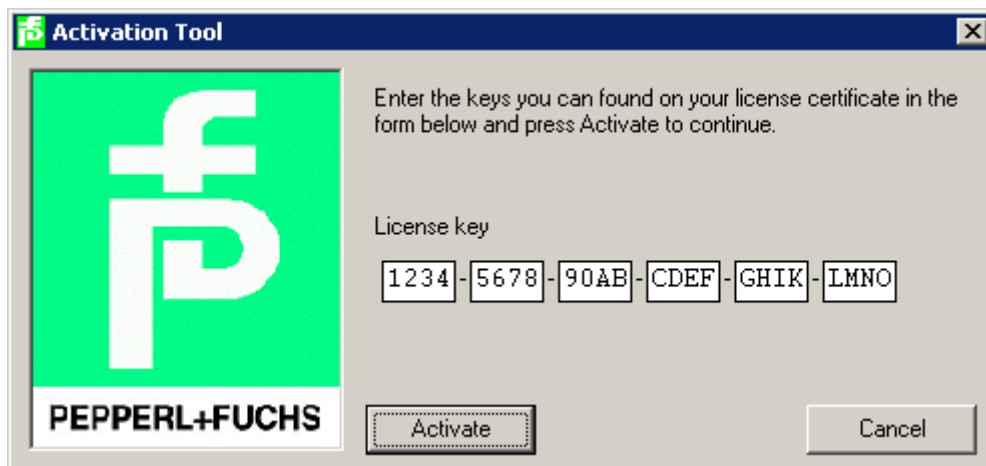




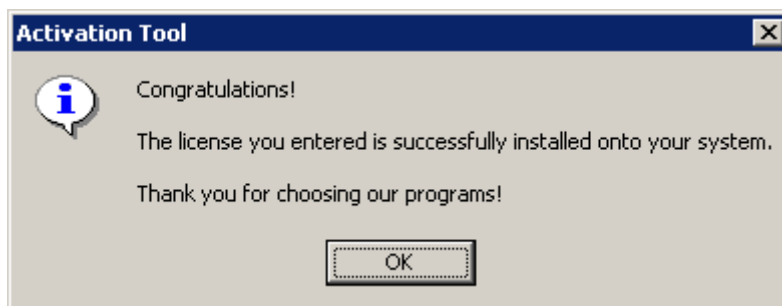
A window appear where you have to enter your licence code.



Enter your licence code and confirm with „**Activate**”.



The “**Level DTMs**” will now be licenced on your computer.  
Confirm with “**OK**” when the licence was successfully installed.

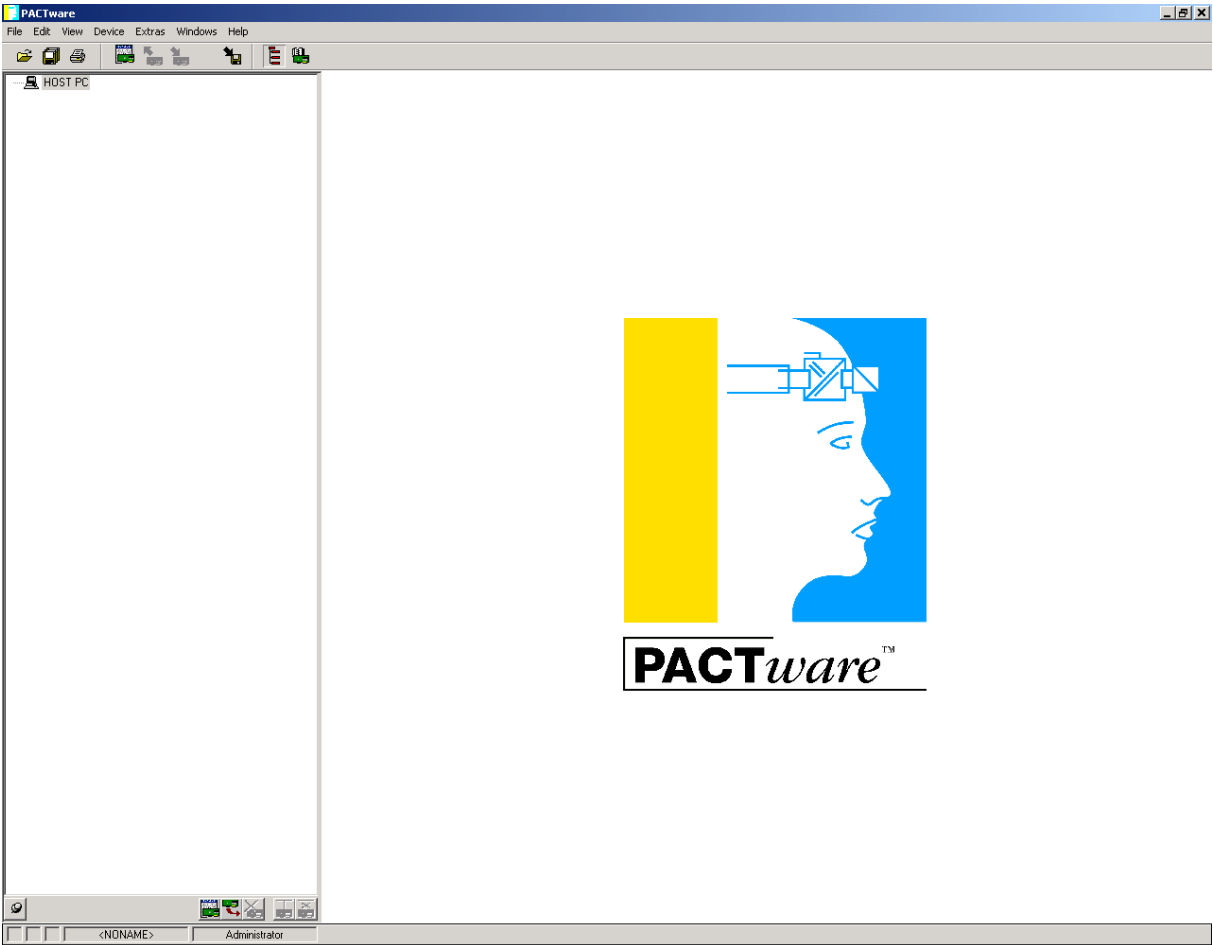


The licence activation of other DTMs if required can be done in the same way at any time.

Start **PACTware** via the Windows Task bar.  
Enter the password „**manager**“ and confirm with OK.



The **PACTware** screen will start now.

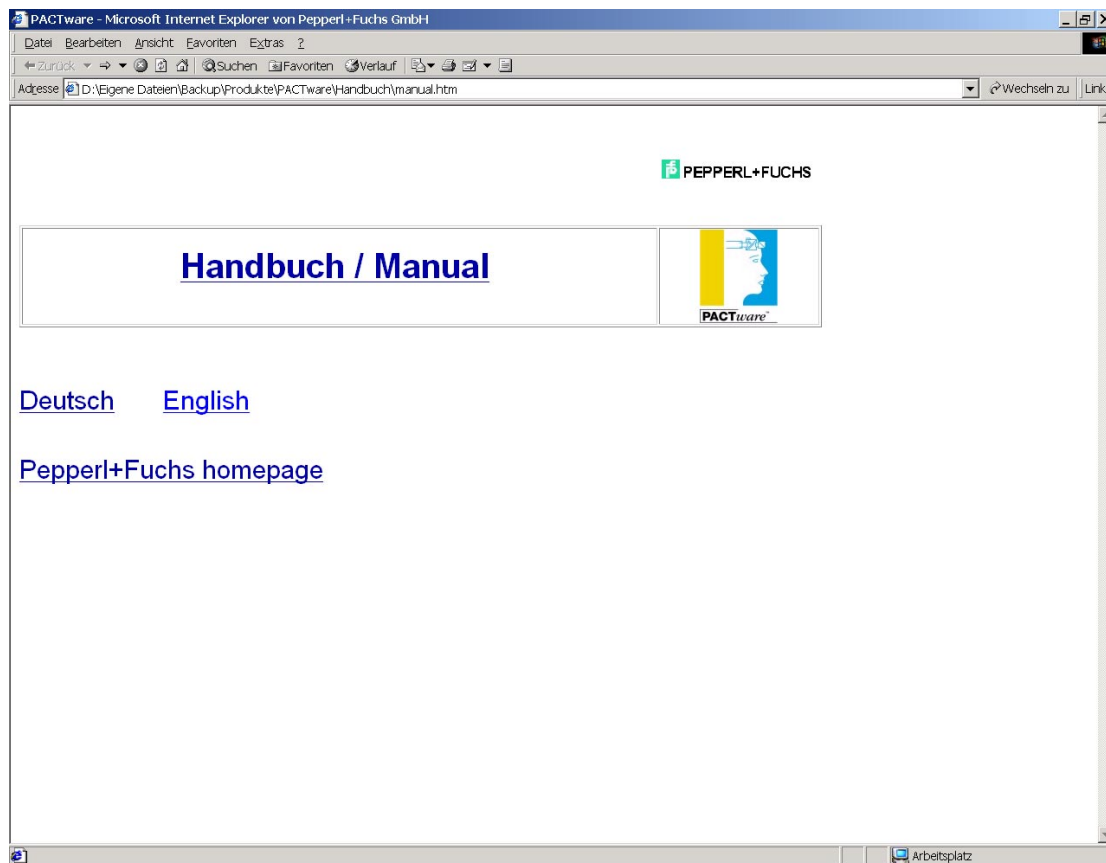


Detailed information of **PACTware** is available in the PACTware manual. You can download the file **\_manual.zip**.

The screenshot shows the website [http://www.pepperl-fuchs.com/pa/accessories/pactware/main\\_e.html](http://www.pepperl-fuchs.com/pa/accessories/pactware/main_e.html) in Microsoft Internet Explorer. The page features a navigation menu with links for Home, News, Service, Catalogue, and Downloads. The main content area is titled "Download Software" and includes links for "data sheet - installation guidelines" and "programming adapter - point to point: conventional interface technique - point to bus: Remote I/O". A "Download" section contains a table of software packages and a "Licences" section with an "Enterprise" license highlighted in yellow. The "manual" link in the package table is circled in red.

Package I		Package II		Package III		Package IV		manual
point to point V1.3 conventional interface technique		point to bus V1.2 Remote I/O		point to bus V1.2 HART		Level V1.2		
PACTware shell	V 2.4 SP2	PACTware shell	V 2.4 SP2	PACTware shell	V 2.4 SP2	PACTware shell	V 2.4 SP2	
KFD2-GU-*	V1.3.8	RPI	V1.3.32	KFD2-HMM16	V1.4.14	Barcon	V1.3.10	manual.zip
ED2-UT-*	V1.3.11	IS-RPI	V1.3.22	HIS2700	V1.4.14 BETA	Barcon M	V1.4.32	
KFD2-UT-*	V1.3.11	Com-RPI	V1.3.32	Generic HART	V1.3.2	LUC	V1.4.28	
KFD2-CR6-Ex1.D	V1.3.1	Com-ModBus	V1.3.1	Com HART FDT	V1.4.8	PULSCON	V1.4.32	
KFD2-UFC-Ex1.D	V1.3.73	Com-Profibus	V1.3.1			Generic HART	V1.3.2	
COM-RS232-300	V1.3.5					Com HART FDT	V1.4.8	
COM-RS232-9600	V1.3.11							

## Select the required language



## Select PACTware

