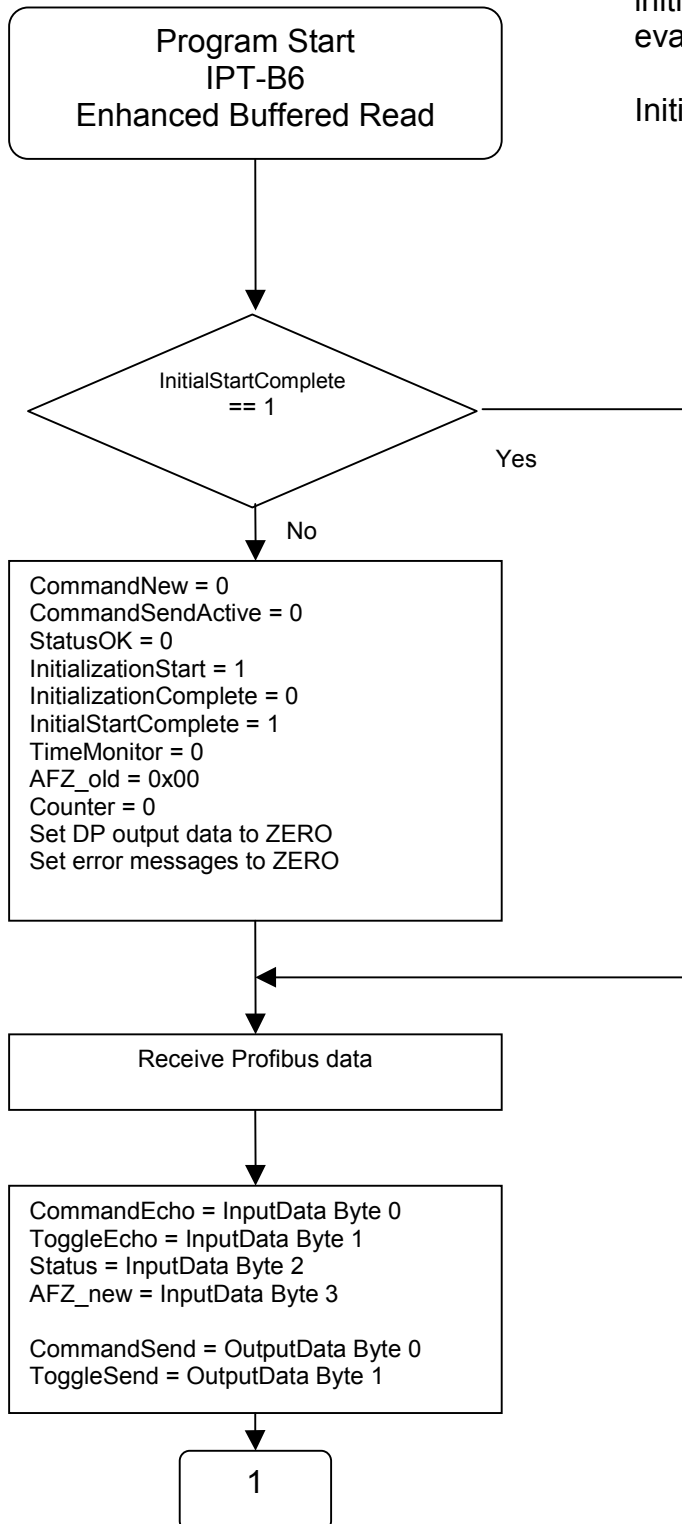


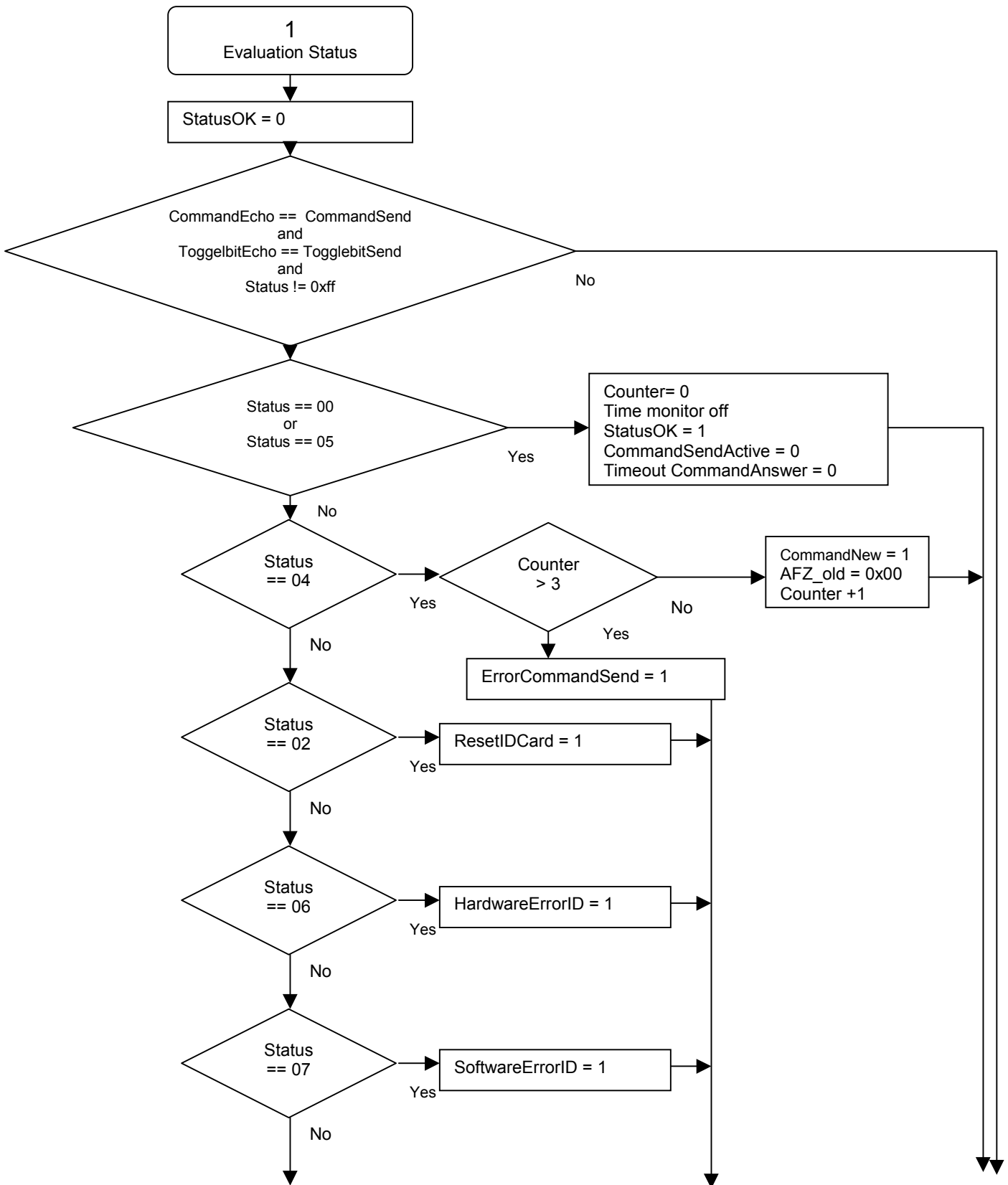
Programming Proposal IPT-B6 in Enhanced Buffered Read Mode

Note:
First initialization or
initialization after an error
evaluation by:

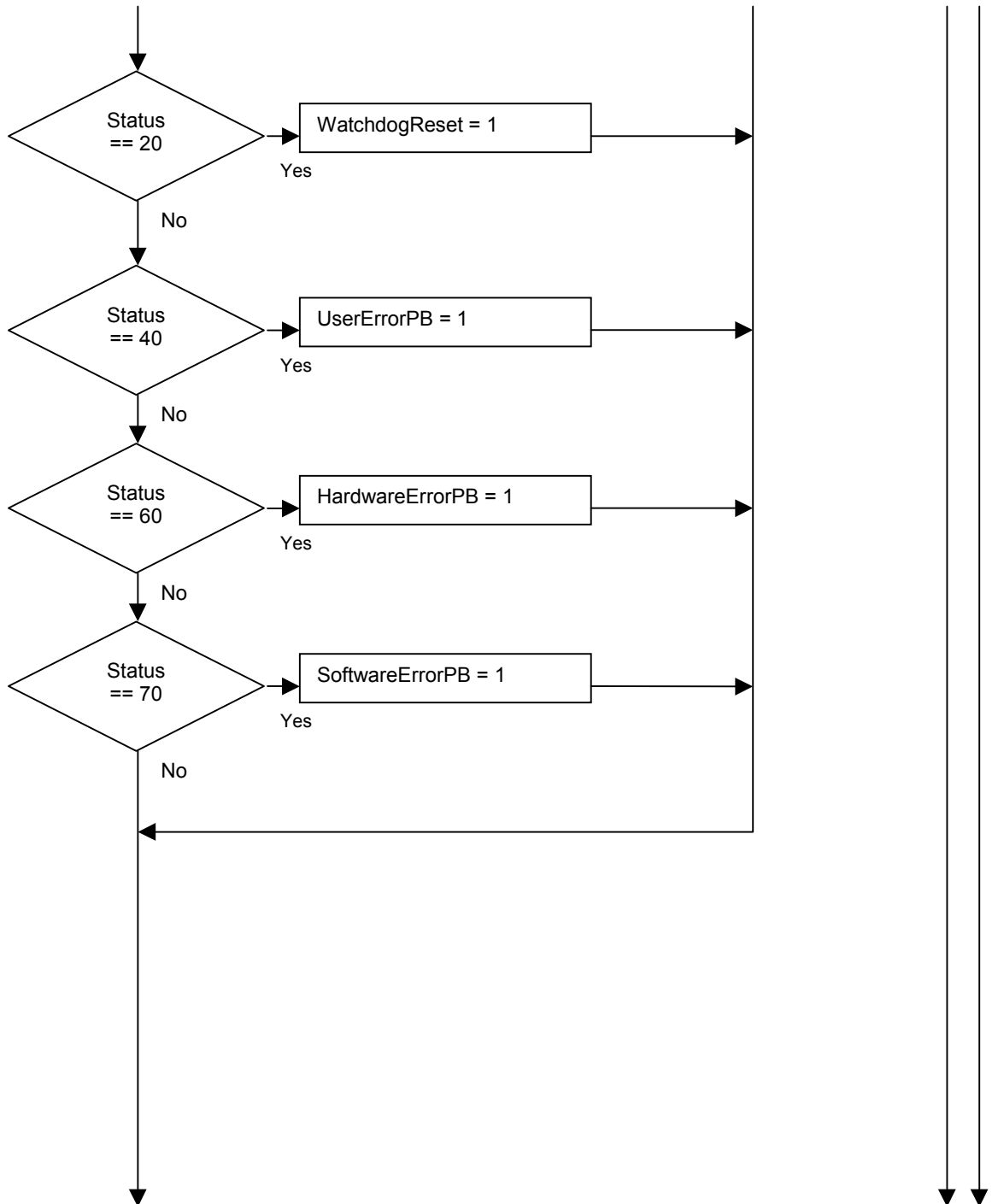
InitialStartComplete = 0



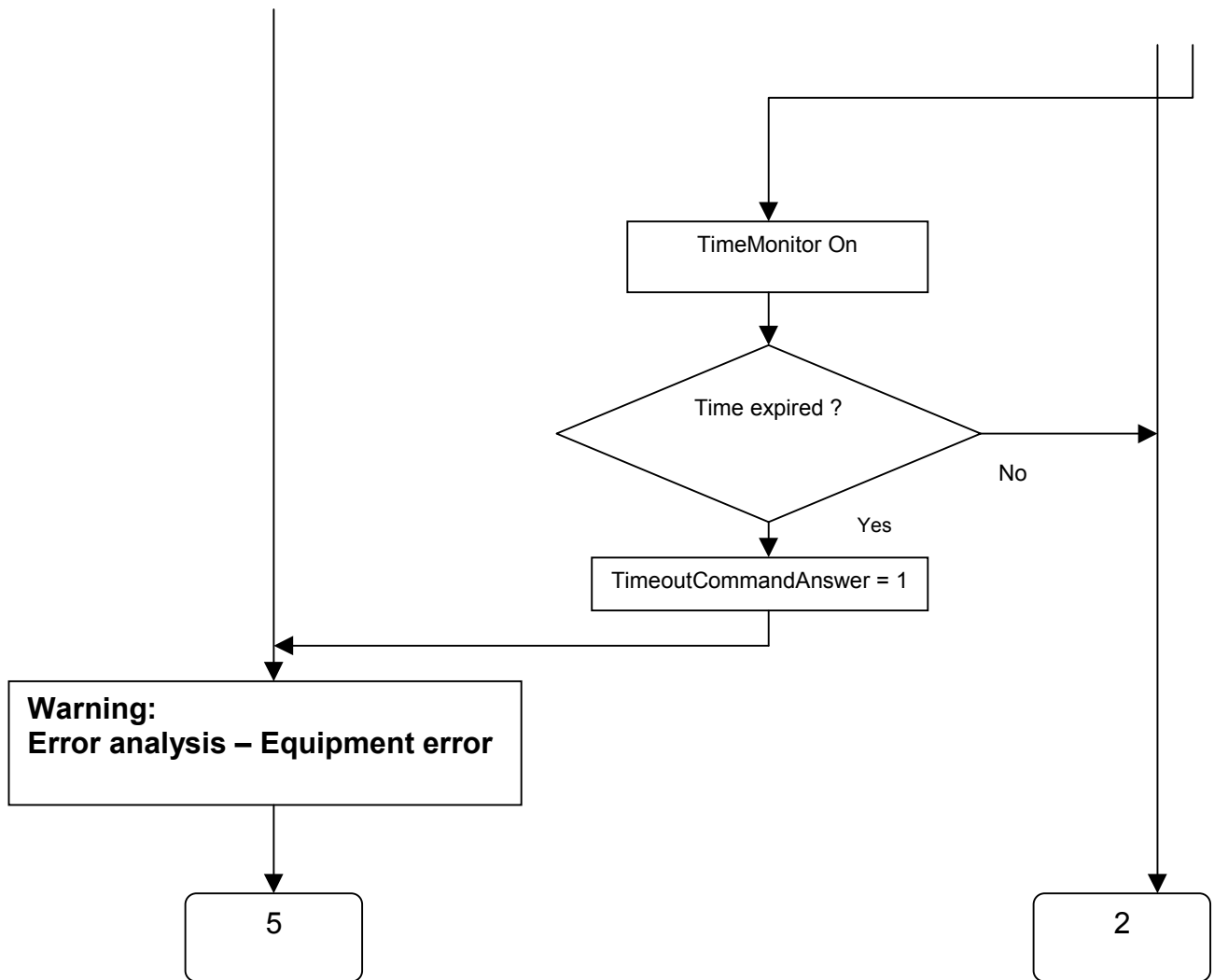
Programming Proposal IPT-B6 in Enhanced Buffered Read Mode



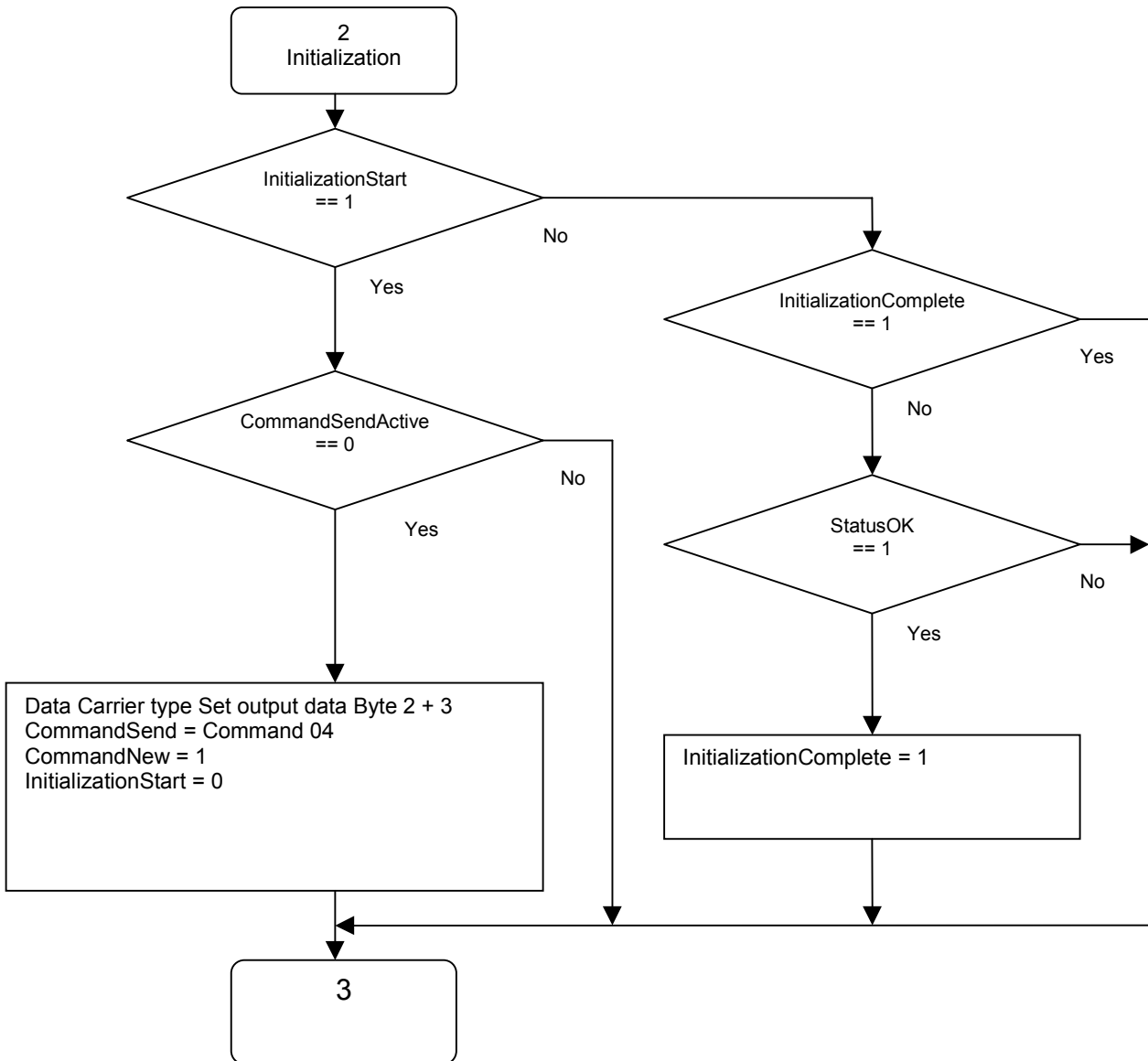
Programming Proposal IPT-B6 in Enhanced Buffered Read Mode



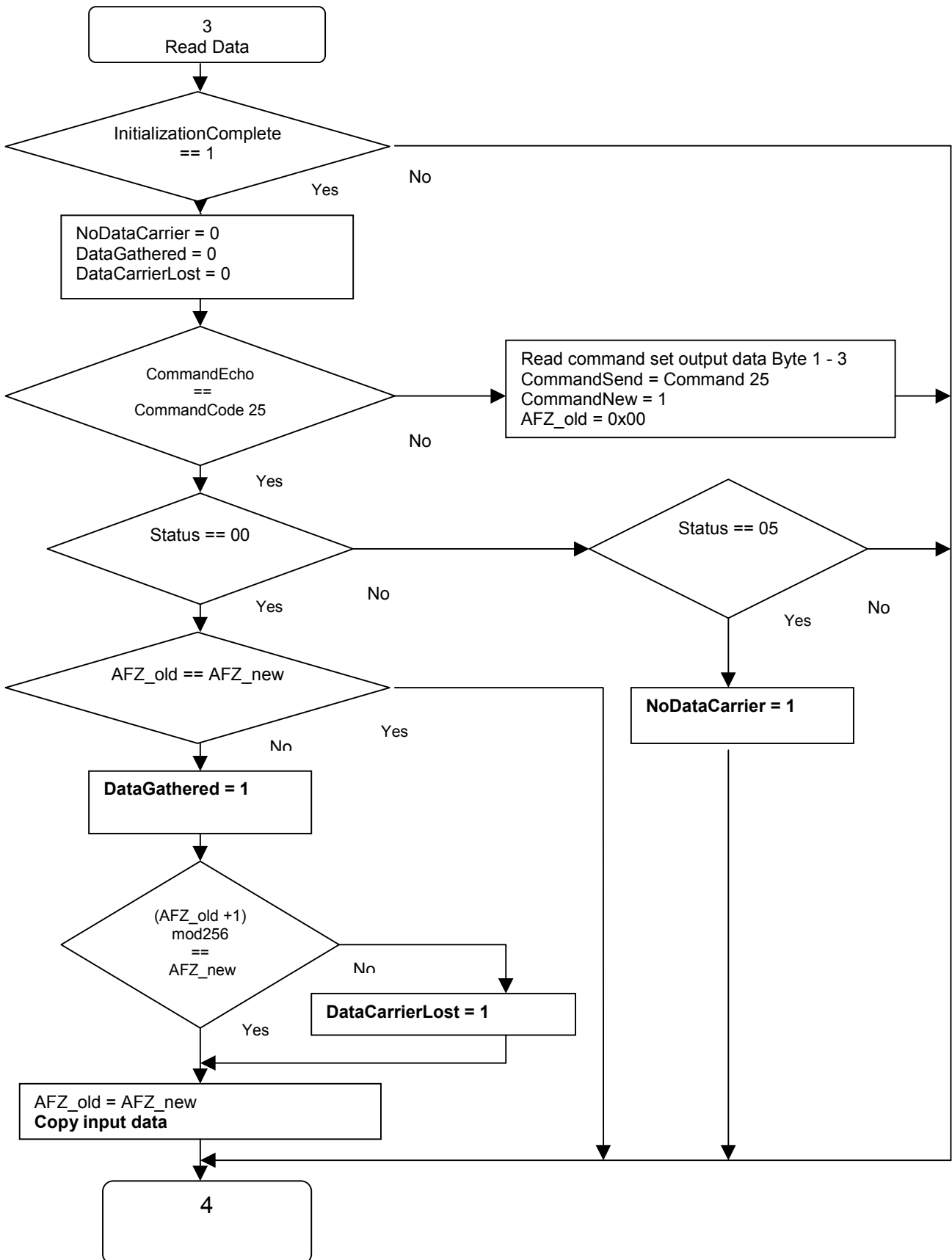
**Programming Proposal
IPT-B6 in
Enhanced Buffered Read Mode**



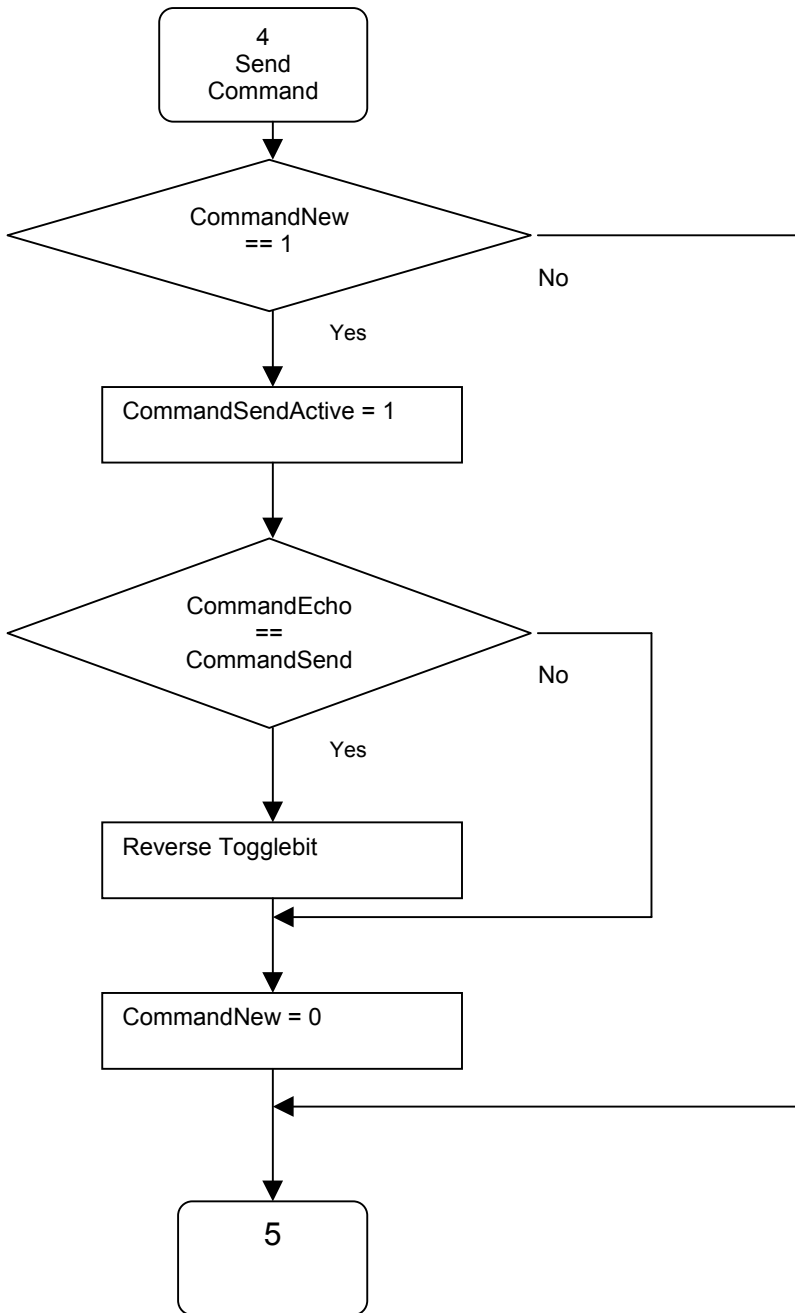
**Programming Proposal
IPT-B6 in
Enhanced Buffered Read Mode**



Programming Proposal IPT-B6 in Enhanced Buffered Read Mode



**Programming Proposal
IPT-B6 in
Enhanced Buffered Read Mode**



**Programming Proposal
IPT-B6 in
Enhanced Buffered Read Mode**

