

FieldConnex® Diagnostic Manager

Brief Instructions



Your automation, our passion.

 **PEPPERL+FUCHS**

With regard to the supply of products, the current issue of the following document is applicable: The General Terms of Delivery for Products and Services of the Electrical Industry, published by the Central Association of the Electrical Industry (Zentralverband Elektrotechnik und Elektroindustrie (ZVEI) e.V.) in its most recent version as well as the supplementary clause: "Expanded reservation of proprietorship"

Worldwide

Pepperl+Fuchs Group
Lilienthalstr. 200
68307 Mannheim
Germany
Phone: +49 621 776 - 0
E-mail: info@de.pepperl-fuchs.com

North American Headquarters

Pepperl+Fuchs Inc.
1600 Enterprise Parkway
Twinsburg, Ohio 44087
USA
Phone: +1 330 425-3555
E-mail: sales@us.pepperl-fuchs.com

Asia Headquarters

Pepperl+Fuchs Pte. Ltd.
P+F Building
18 Ayer Rajah Crescent
Singapore 139942
Phone: +65 6779-9091
E-mail: sales@sg.pepperl-fuchs.com
<https://www.pepperl-fuchs.com>

1	Preface	4
2	Download Package "FieldConnex® Diagnostic Manager"	5
3	Download Package "Diagnostic Gateway FF DTM"	8
4	Licensing	9

1 Preface

This guide will lead you through the installation procedure of all Software components needed to be installed prior to the operation of the ADM. For an operational ADM System the following components are required:

- Microsoft .Net Framework
- PACTware™ Framework
- FieldConnex® Diagnostic Manager or Diagnostic Gateway FF DTM

Whether a FieldConnex® Diagnostic Manager or Diagnostic Gateway DTM is required depends on the used DCS integration. Details are described in the manual.

Two different Software Packages are available for the ADM system

- Download Package **Diagnostic Manager**: a download package including only the FieldConnex® Diagnostic Manager and Tools required for FDS/OPC Integration
- Download Package **Diagnostic Gateway FF DTM**: DTM required if the FF-H1 Integration is used.

Note

You need to be logged on to Windows with administrator privileges during installation



2 Download Package "FieldConnex® Diagnostic Manager"

Requirements:

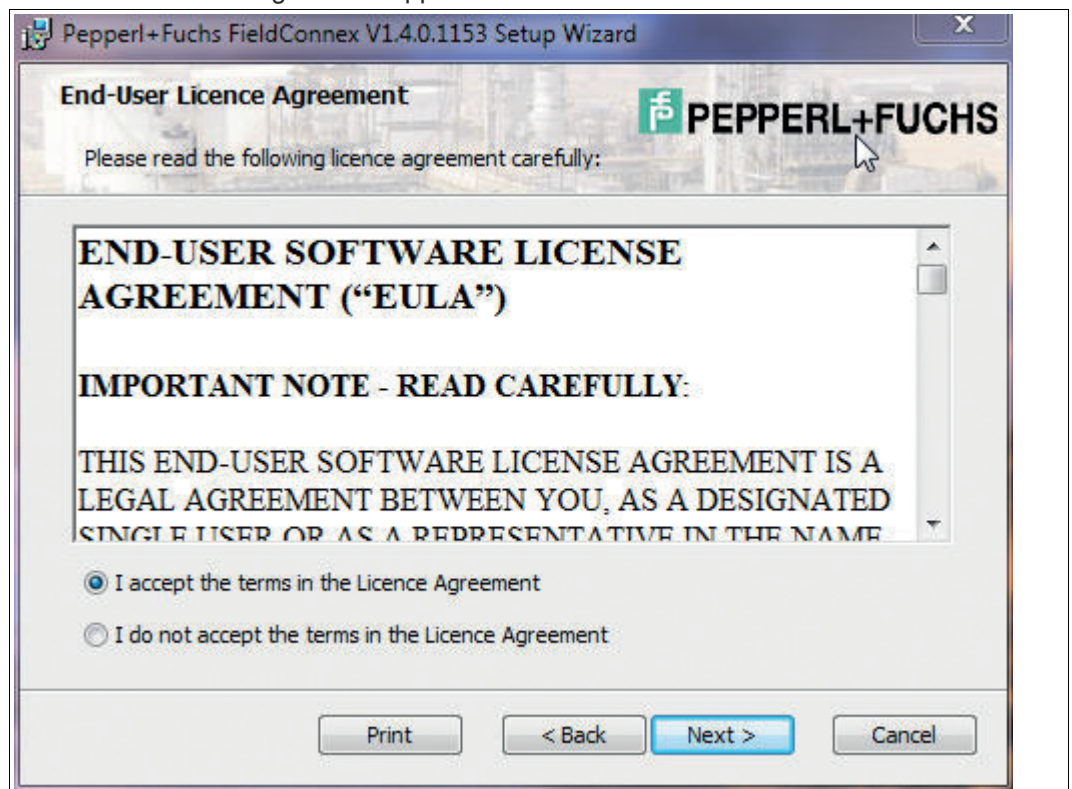
- Operating System and Hardware requirements according to the Release notes of the FieldConnex® Diagnostic Manager
- Microsoft .Net Framework 2.0, 3.0 or 3.5 installed
- A supported FDT Frame application. For details see the release notes of the FieldConnex® Diagnostic Manager



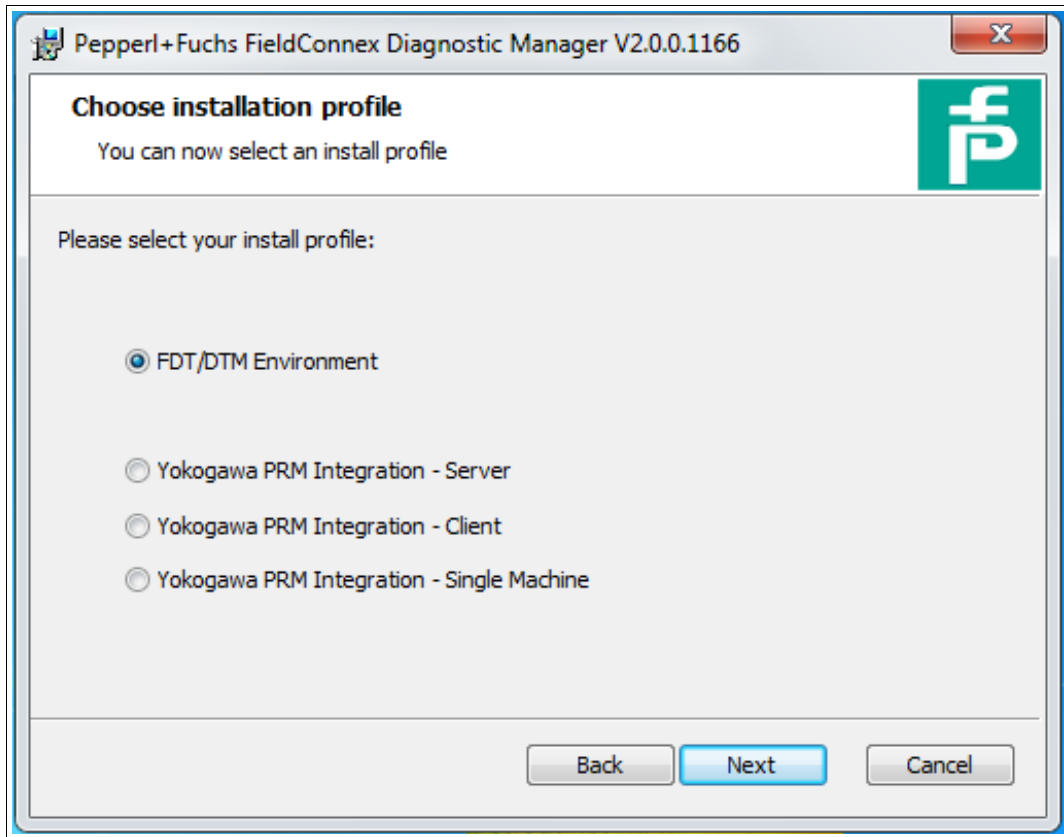
Install FieldConnex® Diagnostic Manager

1. Download the FieldConnex® Diagnostic Manager to your PC.
2. Unzip the package to a temporary folder of your choice.
3. Go to the FieldConnex® Diagnostic Manager Directory inside the temporary folder.
4. Run the setup by starting FieldConnexDiagnosticSetup.exe.
5. To start the installation process, click **Next**.

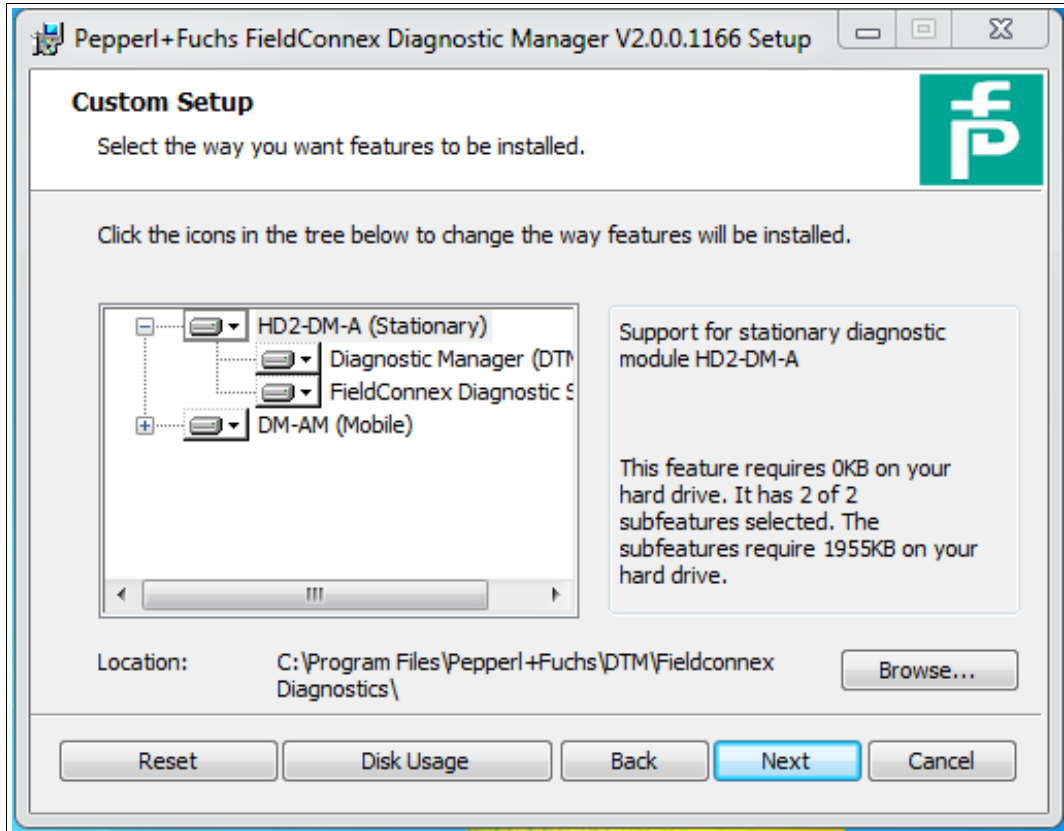
↳ The window License Agreement appears.



6. To continue, accept the End-User License Agreement by clicking **Next**.
7. To install the software components needed for the configuration of the stationary and mobile Advanced Diagnostic Module, choose your installation profile and click **Next**. These settings are valid for the common use cases.



8. Choose software installation for HD2-DM-A or/and the mobile DM-AM.



9. Enter the installation location and click **Next**.

10. To continue, click **Install**.
11. Wait for the wizard to complete the installation.
 - ↳ After installation is completed, you may delete the temporary folder created in step 2 and its content.

3 Download Package "Diagnostic Gateway FF DTM"

Requirements:

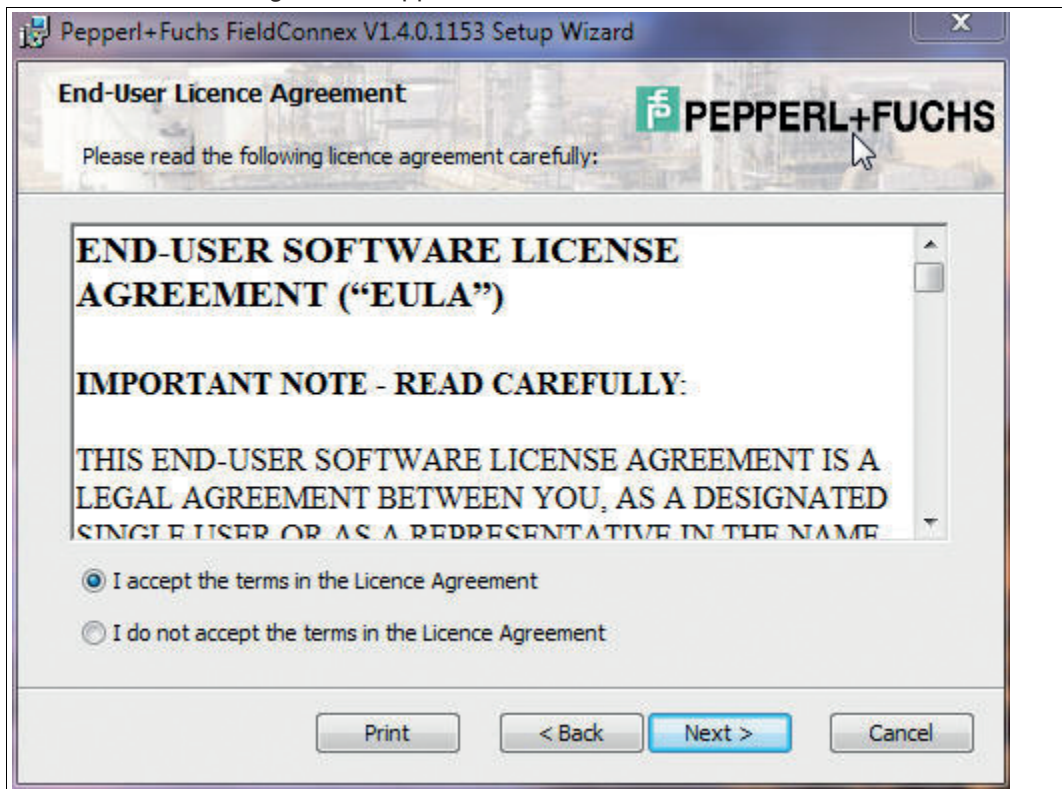
- Operating System and Hardware requirements according to the Release notes of the FieldConnex Diagnostic Gateway DTM
- Microsoft .Net Framework 2.0, 3.0 or 3.5 installed
- A supported FDT Frame application. For details see the release notes of the FieldConnex Diagnostic Gateway DTM release notes



Install FieldConnex Diagnostic Gateway DTM

1. Download the FieldConnex® Diagnostic Gateway DTM to your PC.
2. Unzip the package to a temporary folder of your choice.
3. Go to the FieldConnexDGWFF Directory inside the temporary Folder.
4. Run the setup by starting FieldConnexDGWFFSetup.exe.
5. To start the installation process, click **Next**.

↳ The window License Agreement appears.



6. To continue, accept the End-User License Agreement by clicking **Next**.
7. Enter the installation location and click **Next**.
8. To continue, click **Install**.
9. Wait for the wizard to complete the installation.

↳ After installation is completed you may delete the temporary folder created in step 2 and its content.

4 Licensing

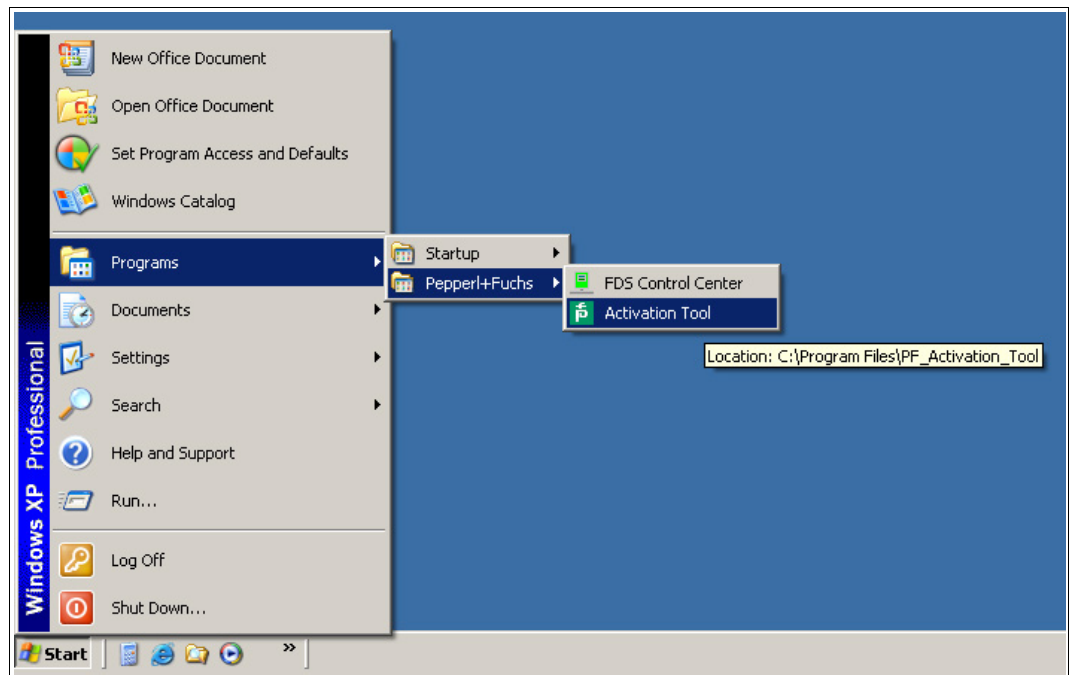
After the installation has been completed, the FieldConnex® Diagnostic Manager remains first a basic version with reduced functionality. To activate the fully featured version, a License Key is needed. The License Key is printed on the License Certificate you have optionally received with the FieldConnex® Diagnostic Manager Software Package.

If you have downloaded the FieldConnex® Diagnostic Manager via Internet, a License Key can be ordered through your local Pepperl+Fuchs representative.



License Activation

1. Start the Pepperl+Fuchs License Activation Tool: **Programs>Pepperl+Fuchs>Activation Tool**.



2. Enter your License Key into the 6 code boxes.



3. Click **Activate**.
4. After activation is confirmed, click **Finish** to close the window.

Your automation, our passion.

Explosion Protection

- Intrinsic Safety Barriers
- Signal Conditioners
- FieldConnex® Fieldbus
- Remote I/O Systems
- Electrical Ex Equipment
- Purge and Pressurization
- Industrial HMI
- Mobile Computing and Communications
- HART Interface Solutions
- Surge Protection
- Wireless Solutions
- Level Measurement

Industrial Sensors

- Proximity Sensors
- Photoelectric Sensors
- Industrial Vision
- Ultrasonic Sensors
- Rotary Encoders
- Positioning Systems
- Inclination and Acceleration Sensors
- Fieldbus Modules
- AS-Interface
- Identification Systems
- Displays and Signal Processing
- Connectivity

Pepperl+Fuchs Quality

Download our latest policy here:

www.pepperl-fuchs.com/quality

