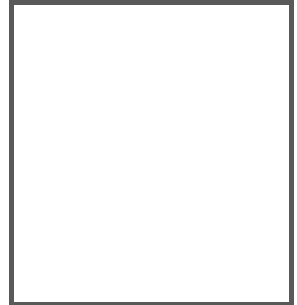


MANUAL

**USB VIRTUAL COM PORT DRIVER
INSTALLATION UNDER
WINDOWS XP/WINDOWS 2000**





With regard to the supply of products, the current issue of the following document is applicable: The General Terms of Delivery for Products and Services of the Electrical Industry, published by the Central Association of the Electrical Industry (Zentralverband Elektrotechnik und Elektroindustrie (ZVEI) e.V.) in its most recent version as well as the supplementary clause: "Expanded reservation of proprietorship"



1	Software description	4
2	Installation	5
2.1	Installation under Windows XP	5
2.2	Installation under Windows 2000	12

1 Software description

If you use software programs that communicate with a handheld connected via a serial interface (e.g. COM1...COM8), you will require a so-called virtual COM port driver. This virtual COM port driver allows you to assign a virtual COM port connection number to devices connected via a USB port and enables bidirectional communication between the PC and the handheld.

2 Installation

2.1 Installation under Windows XP



Note!

Before performing the following installation, save all data stored on the handheld to avoid data loss. Either transfer the data to a PC or deactivate the function that automatically deletes data sent from the handheld memory.

Deactivate the **Auto erase** menu entry under **Settings > Send/Log**.



Installing the USB virtual COM port driver

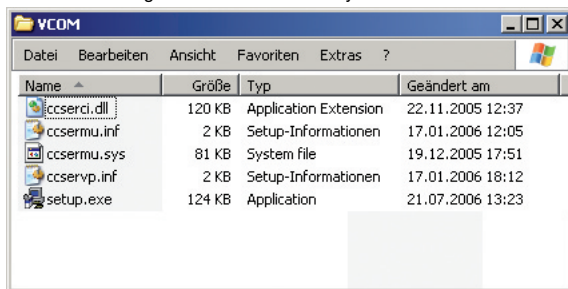


Note!

Before installing the USB virtual COM port driver, make sure that Firmware version 3000 (or higher) is installed on the handheld.

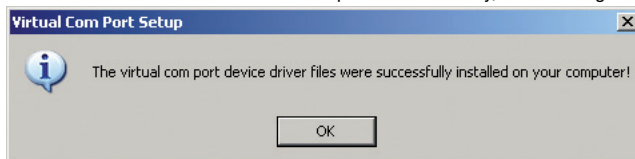
1. If the handheld is still connected to the PC, disconnect it.
2. Download the ZIP file containing the USB virtual COM port drive from www.pepperl-fuchs.com and extract the files to your PC.

The following files are transferred to your PC:



3. Double-click the installation file **setup.exe**.

Installation starts automatically. A status indicator updates you on the progress of the installation. If the installation is completed successfully, the following message appears:



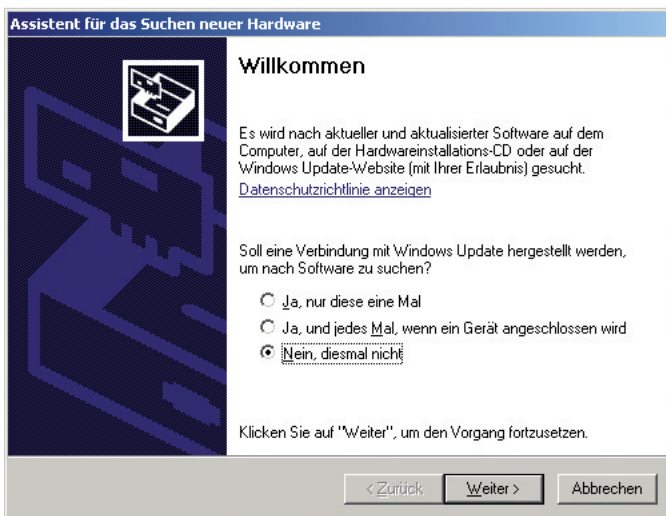
4. Click **OK**.
5. Connect the handheld to your PC using the USB connection cable.
Windows XP may not detect the handheld.

- If you are using an RFID handheld, select **Settings > Communication**, activate the interface **USB** and then activate **VCOM 1way** mode.
If you are using a data matrix handheld, scan the following data matrix code **USB Virtual COM 1way Mode**.



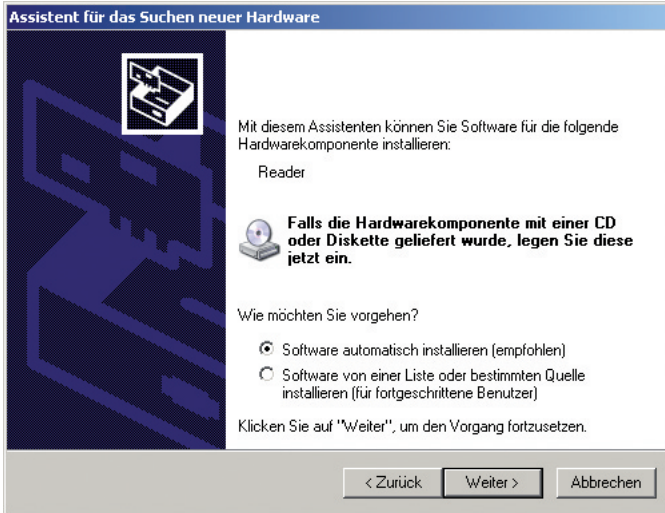
M668_01

Windows XP detects the handheld and automatically opens the **New hardware search assistant** dialog box:



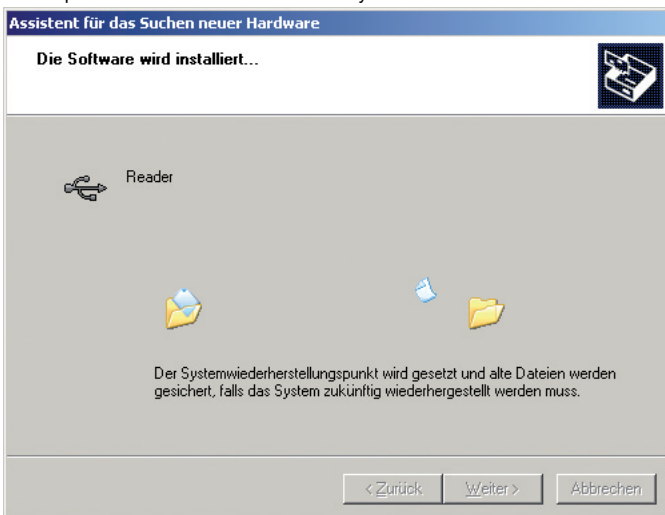
- Activate the option **No**, **not this time** and click **Next**.

The next page of the installation assistant opens:

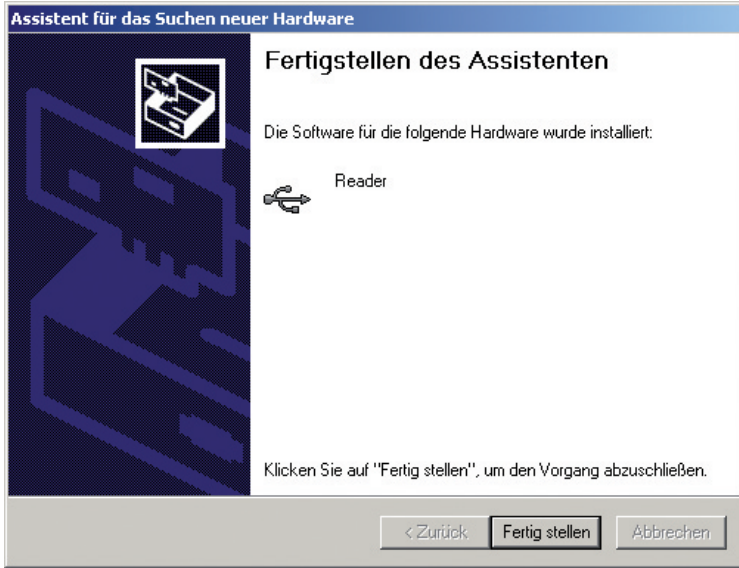


8. Activate the option **Install software automatically (recommended)** and click **Next**.

The installation assistant searches for connected hardware. At the end of the search, the required files are installed automatically:



9. The next page of the installation assistant opens. Click **Finish**.



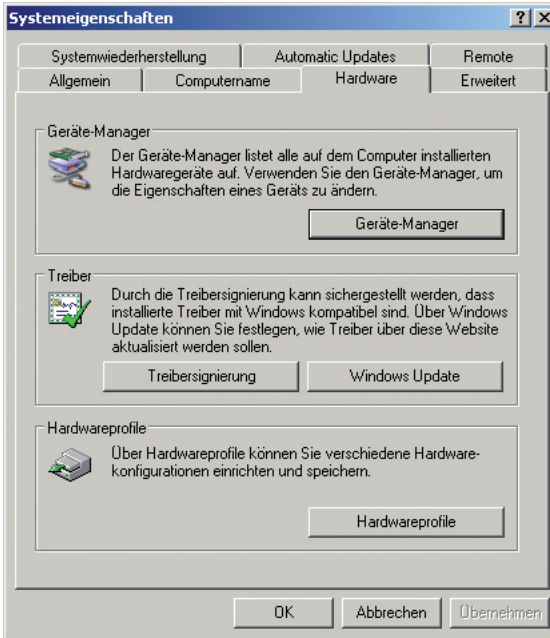
Note!

Windows XP may prompt you to restart the PC. However, restarting is not necessary.



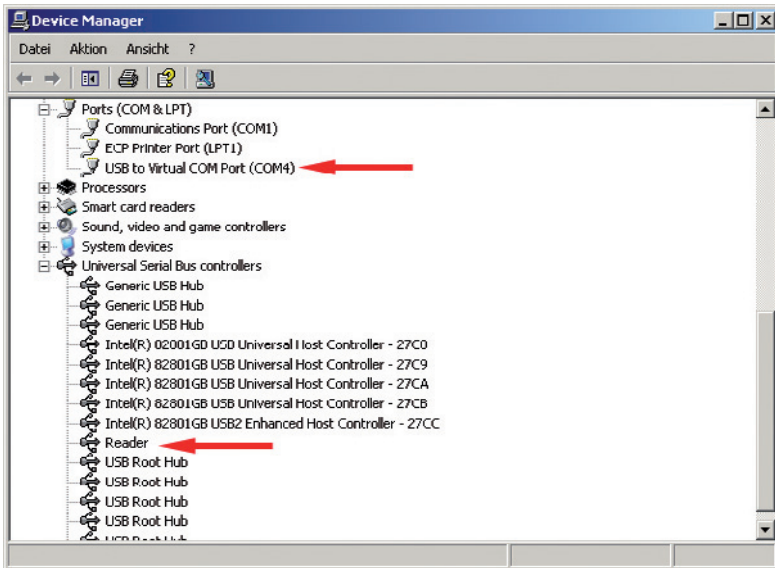
Viewing the virtual COM port

1. Open the Windows XP system properties under **Control panel > System**.



2. Click the **Device manager** button in the device manager area on the **Hardware** index tab. The **Device manager** dialog box opens.
3. Click on the plus sign (+) in front of the **PORTS (COM&LPT)** entry to view the virtual COM port.

The subentries for parallel and serial interfaces are displayed. The virtual COM port should appear among the entries. You will also find the installed handheld under the **Universal Serial Bus controllers** entry:



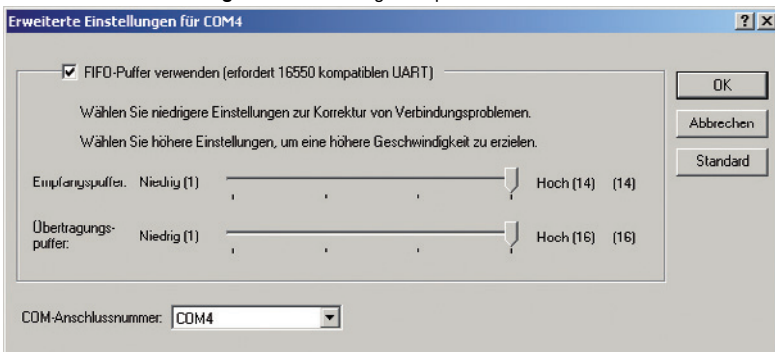
Changing the virtual COM port connection number

1. To change the COM port connection number, click the entry **USB to Virtual COM Port** with the right mouse button and select the entry **Properties** in the context menu.

The **Properties of USB to Virtual COM Port (COM*)** dialog box opens.

2. Click the **Advanced...** button on the **Connection settings** index tab.

The **Advanced settings for COM*** dialog box opens:



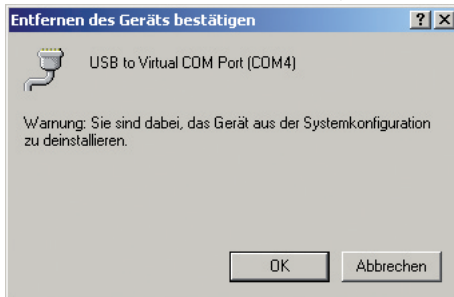
3. Select the desired connection number for the virtual COM port from the **COM connection number** drop-down list and press **OK** to confirm.
4. Click **OK**.
5. Close the device manager.



Uninstalling the virtual COM port

1. Open the device manager.
2. Click on the plus sign (+) in front of the **PORTS (COM&LPT)** entry to view the virtual COM port
 The subentries for parallel and serial interfaces are displayed. The virtual COM port should appear among the entries.
3. Click the entry **USB to Virtual COM Port** with the right mouse button and select the entry **Uninstall** in the context menu.

The **Confirm device removal** dialog box opens:



4. Click **OK** to uninstall the virtual COM port.
 After successful uninstallation, the virtual COM port no longer appears in the device manager.

2.2 Installation under Windows 2000



Note!

Before performing the following installation, save all data stored on the handheld to avoid data loss. Either transfer the data to a PC or deactivate the function that automatically deletes data sent from the handheld memory.

Deactivate the **Auto erase** menu entry under **Settings > Send/Log**.



Installing the USB virtual COM port driver

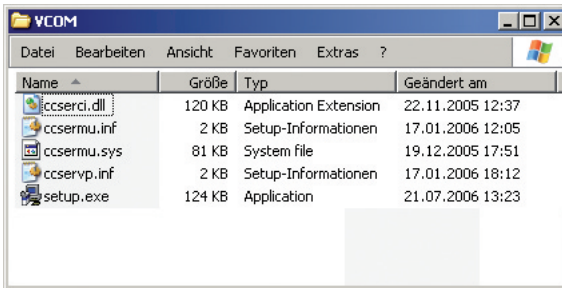


Note!

Before installing the USB virtual COM port driver, make sure that Firmware version 3000 (or higher) is installed on the handheld.

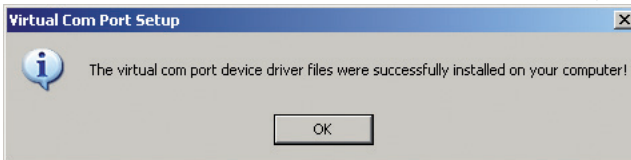
1. If the handheld is still connected to the PC, disconnect it.
2. Download the ZIP file containing the USB virtual COM port driver from www.pepperl-fuchs.com and extract the files to your PC.

The following files are transferred to your PC:



3. Double-click the installation file **setup.exe**.

Installation starts automatically. A status indicator updates you on the progress of the installation. If the installation is completed successfully, the following message appears:



4. Click **OK**.
5. Connect the handheld to your PC using the USB connection cable.
Windows 2000 may not detect the handheld.

- If you are using an RFID handheld, select **Settings > Communication**, activate the interface **USB** and then activate **VCOM 1way** mode.
If you are using a data matrix handheld, scan the following data matrix code **USB Virtual COM 1way Mode**.



M668_01



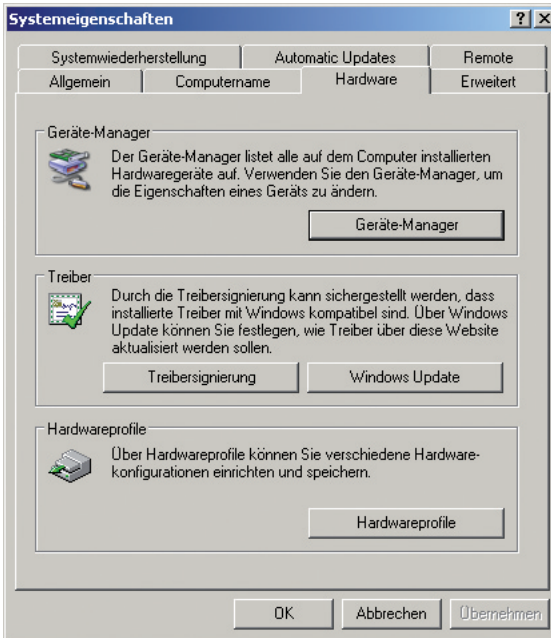
Note!

Windows 2000 may prompt you to restart the PC. However, restarting is not necessary.



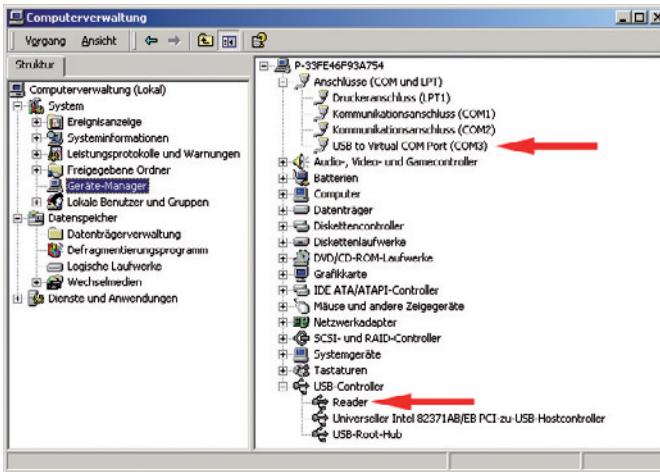
Viewing the virtual COM port

- Open the Windows 2000 system properties under **Control panel > System**.



- Click the **Device manager** button in the device manager area on the **Hardware** index tab.
The **Computer management** dialog box opens.
- Click on the plus sign (+) in front of the **PORTS (COM&LPT)** entry to view the virtual COM port

The subentries for parallel and serial interfaces are displayed. The virtual COM port should appear among the entries. You will also find the installed handheld under the **Universal Serial Bus controllers** entry:



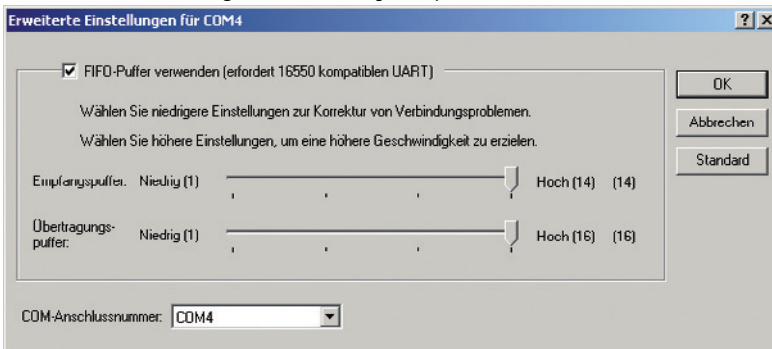
Changing the virtual COM port connection number

1. To change the COM port connection number, click the entry **USB to Virtual COM Port** with the right mouse button and select the entry **Properties** in the context menu.

The **Properties of USB to Virtual COM Port (COM*)** dialog box opens.

2. Click the **Advanced...** button on the **Connection settings** index tab.

The **Advanced settings for COM*** dialog box opens:



3. Select the desired connection number for the virtual COM port from the **COM connection number** drop-down list and press **OK** to confirm.
4. Click **OK**.
5. Close the device manager.



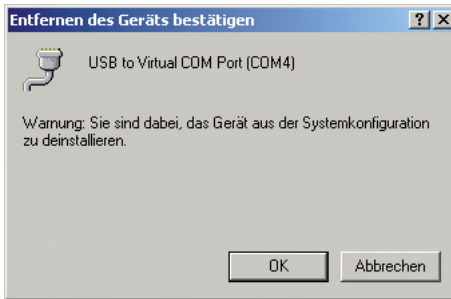
Uninstalling the virtual COM port

1. Open the device manager.
2. Click on the plus sign (+) in front of the PORTS (COM&LPT) entry to view the virtual COM port

The subentries for parallel and serial interfaces are displayed. The virtual COM port should appear among the entries.

3. Click the entry **USB to Virtual COM Port** with the right mouse button and select the entry **Uninstall** in the context menu.

The **Confirm device removal** dialog box opens:



4. Click **OK** to uninstall the virtual COM port.

After successful uninstallation, the virtual COM port no longer appears in the device manager.

FACTORY AUTOMATION – SENSING YOUR NEEDS



Worldwide Headquarters

Pepperl+Fuchs GmbH
68307 Mannheim · Germany
Tel. +49 621 776-0
E-mail: info@de.pepperl-fuchs.com

USA Headquarters

Pepperl+Fuchs Inc.
Twinsburg, Ohio 44087 · USA
Tel. +1 330 4253555
E-mail: sales@us.pepperl-fuchs.com

Asia Pacific Headquarters

Pepperl+Fuchs Pte Ltd.
Company Registration No. 199003130E
Singapore 139942
Tel. +65 67799091
E-mail: sales@sg.pepperl-fuchs.com

www.pepperl-fuchs.com

 **PEPPERL+FUCHS**
SENSING YOUR NEEDS

Subject to modifications
Copyright PEPPERL+FUCHS • Printed in Germany

206326 / TDOCT-1432_ENG
12/2007