

WELCOME TO THE COLORFUL WORLD OF THE COLOR SENSOR VCS210

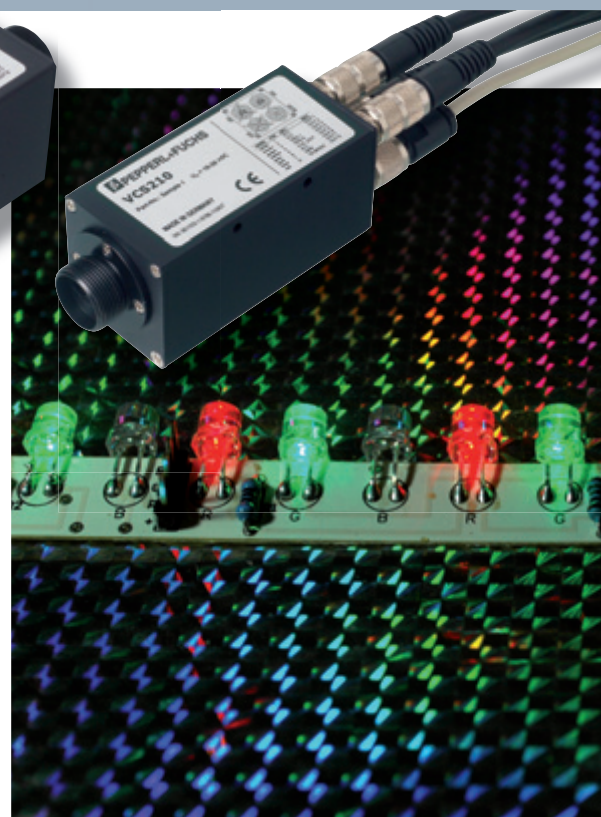
- Fiber optic color sensor
- Identify minute color variations for sorting, positioning, and quality control
- 255 Color TEACH-IN
- Independent of fluctuation in light and brightness
- response time 90 μ s
- Detects illuminated LEDs
- High functionality and accuracy, yet simple and easy operation and programming
- Robust fibre rated for temperatures up to 300 °C



COLOR SENSOR VCS210

APPLICATIONS

- Detects illuminated LEDs
- Recognition of minor changes in color
- Primer recognition
- Checks color sequence of cables in connector assembly



TECHNICAL DATA

Control Range	Independent of fiber optic light guide
Test signal launch	per light guide
Light emitter	Triple photodiode
Light type	White light-LED
Gain level	1, 5, 25, 100
A/D Conversion	3 x 12 Bit
Secondary light source	Dynamic, deactivatable
Outputs	8 Circuit output · 1 Control output · 2 Control input
Interface	RS232/USB
Color resolution	DELab ≤ 1
Circuit voltage	18 V DC ... 28 V DC, max. 500 mA
Reaction time	$\geq 90 \mu\text{s}$
Sampling frequency	100 Hz
Color mode	Perceived color · Primary light source
Memory color (Color class)	up to 255
Color processing mode	Color recognition · Color classification
Operation mode	External trigger · Slave synchronization · Primary light source · Perceived color · Color grouping · Color sequence recognition
PC software	Sensor parameterization · Signaling display in color diagram · TEACH-IN color pattern display of color value · Firmware update
Connection	Connector plug M12, 8-pole
Enclosure material	Aluminum, anodized
Ambient temperature	-10 °C ... 55 °C
Dimensions	89.7 mm x 36 mm x 36 mm
Protection type	IP65



Contact

Pepperl+Fuchs GmbH
Königsberger Allee 87
68307 Mannheim · Germany
Tel. +49 621 776-4411 · Fax +49 621 776-27-4411
E-mail: fa-info@de.pepperl-fuchs.com

Worldwide Headquarters

Pepperl+Fuchs GmbH · Mannheim · Germany
E-mail: info@de.pepperl-fuchs.com

USA Headquarters

Pepperl+Fuchs Inc. · Twinsburg · USA
E-mail: sales@us.pepperl-fuchs.com

Asia Pacific Headquarters

Pepperl+Fuchs Pte Ltd · Singapore
Company Registration No. 1999003130E
E-mail: sales@sg.pepperl-fuchs.com

www.pepperl-fuchs.com

 **PEPPERL+FUCHS**
SENSING YOUR NEEDS