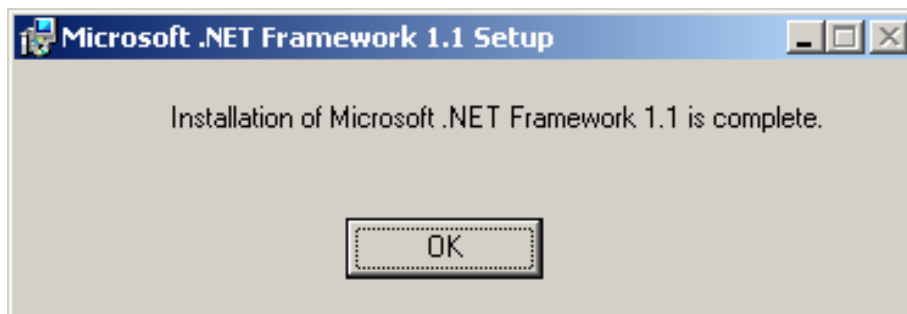
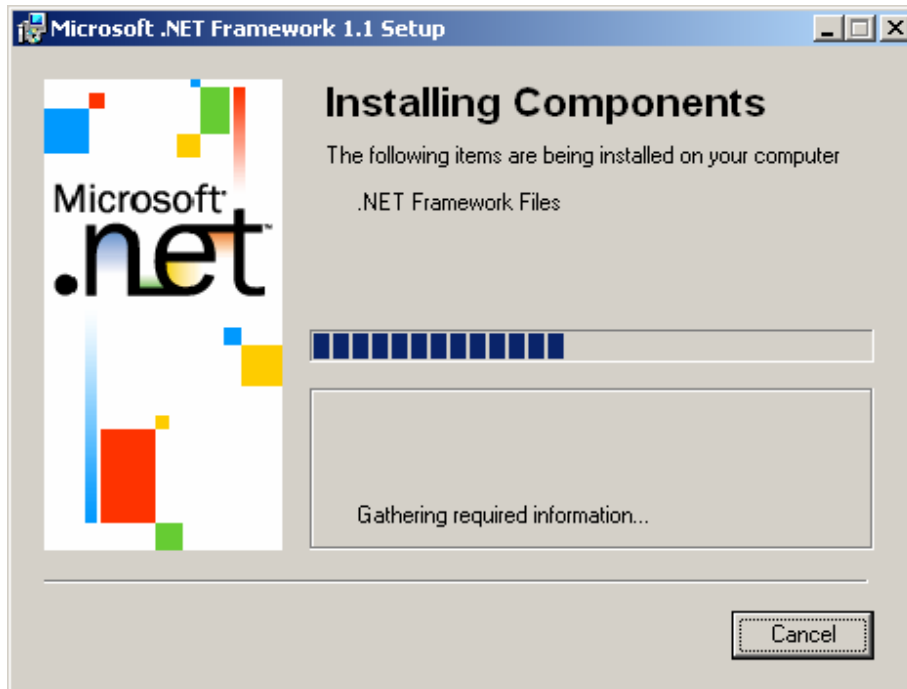


Installation guideline PACTware 3.6

The installation of the **.NET** Framework is required before the installation of **PACTware 3.6** can be done.

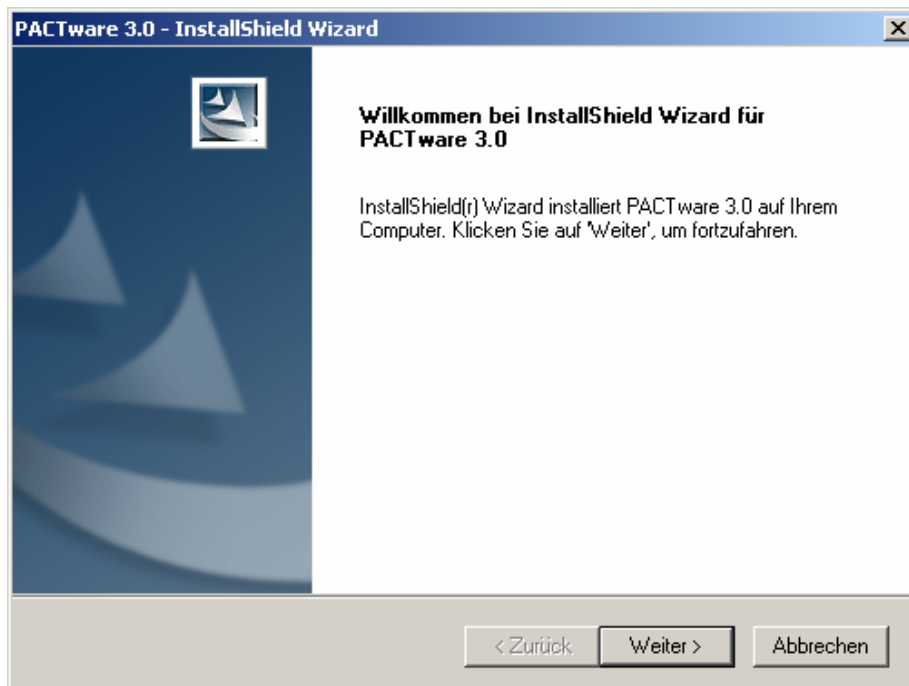
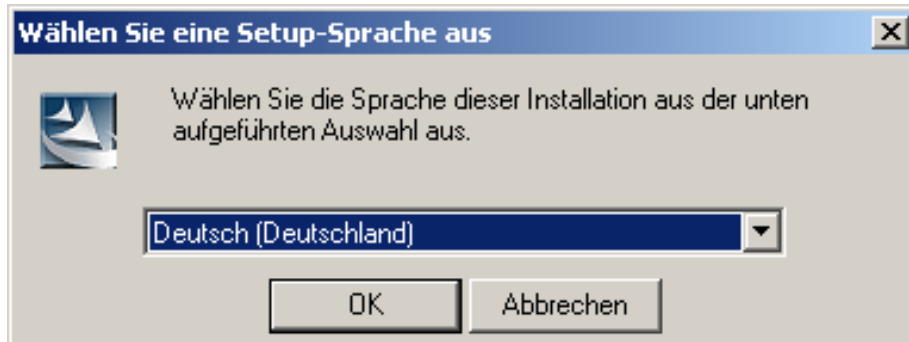
Download the **.NET** Framework from the Pepperl+Fuchs homepage referred to as www.pepperl-fuchs.com. You can find **.Net** in the Product Selector.

Decompress the downloaded **ZIP** files and let store the contents to separate locations on your hard drive. Install the application by clicking on its corresponding **dotnetfx.exe**.

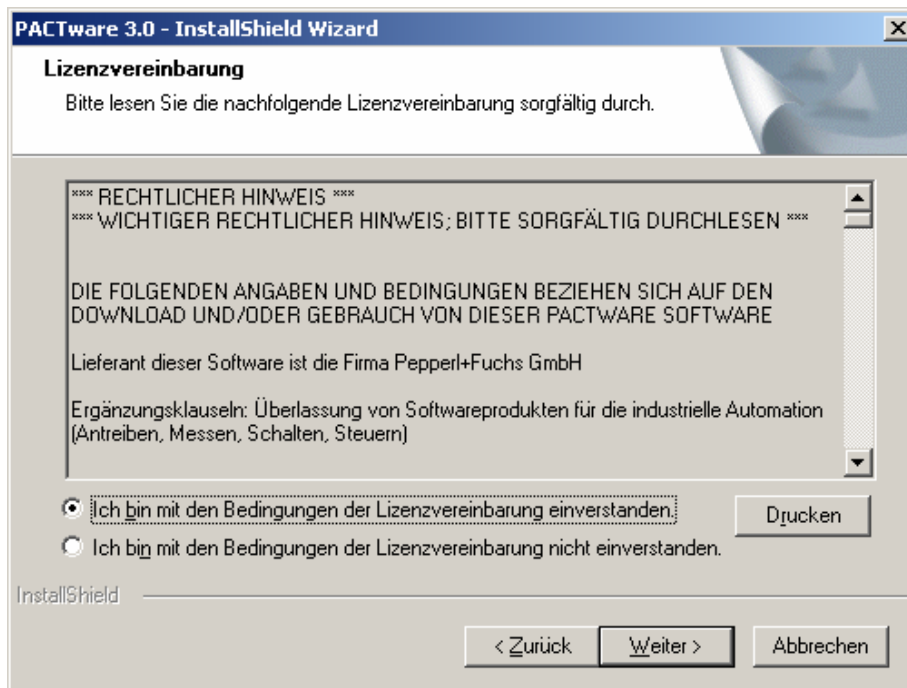


Download **PACTware 3.6** from the Pepperl+Fuchs homepage referred to as www.pepperl-fuchs.com. You can find **PACTware 3.6** in the Product Selector. Decompress the downloaded **ZIP** files and let store the contents to separate locations on your hard drive. Install the application by clicking on its corresponding **setup.exe**.

Select the required language and confirm by clicking to **OK**.



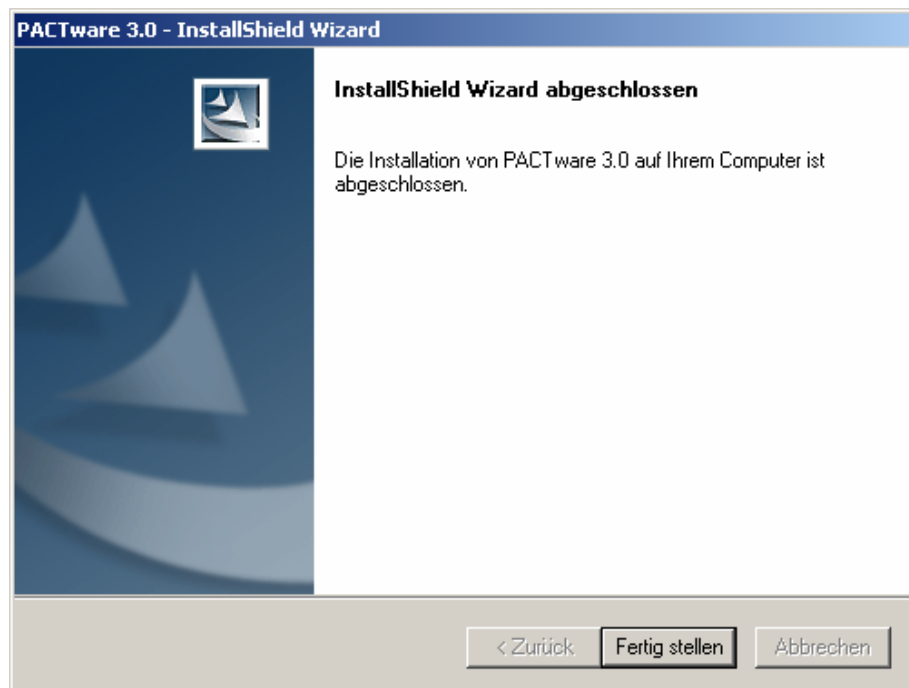
Accept the conditions of the license agreement and confirm by clicking to **Weiter**.



Select the required setup type



PACTware 3.6 will now be installed on your computer.
Confirm by clicking to **Fertig stellen** when the installation has been finished.

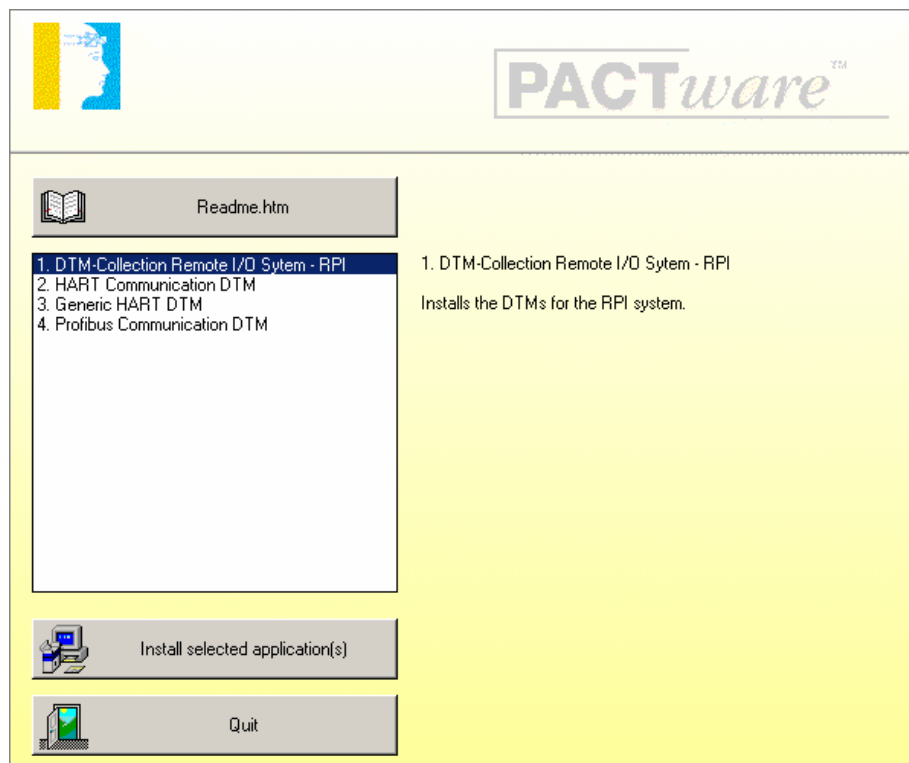


Installation of DTM-Collection Remote I/O System RPI

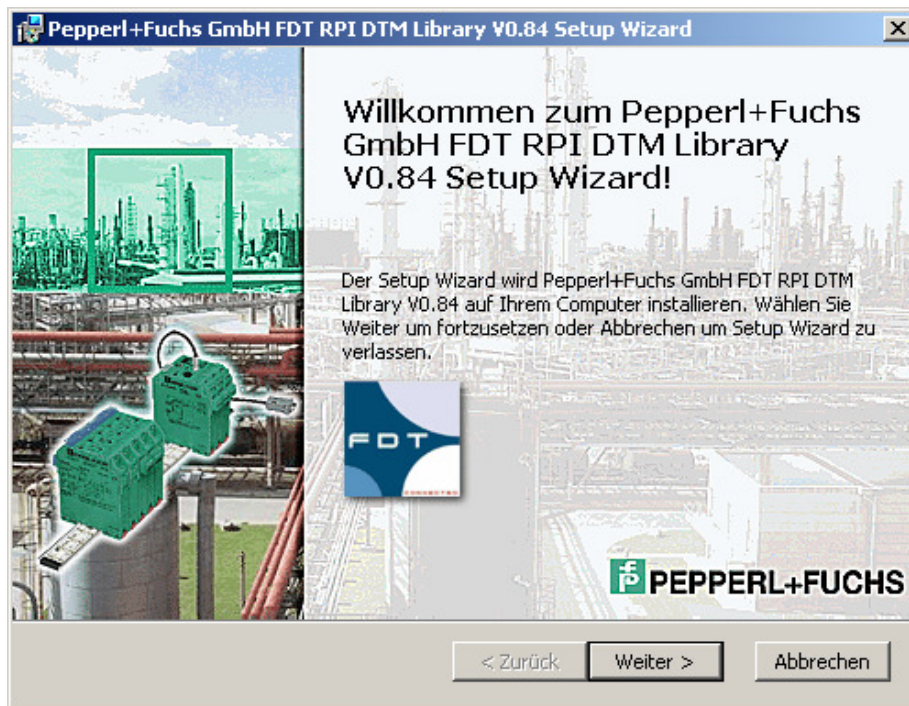
Download the **DTM-Collection Remote I/O System RPI** from the Pepperl+Fuchs homepage referred to as www.pepperl-fuchs.com. You can find the DTM-collection in the Product Selector.

Decompress the downloaded **ZIP** files and let store the contents to separate locations on your hard drive. Install the application by clicking on its corresponding **autorun.exe**.

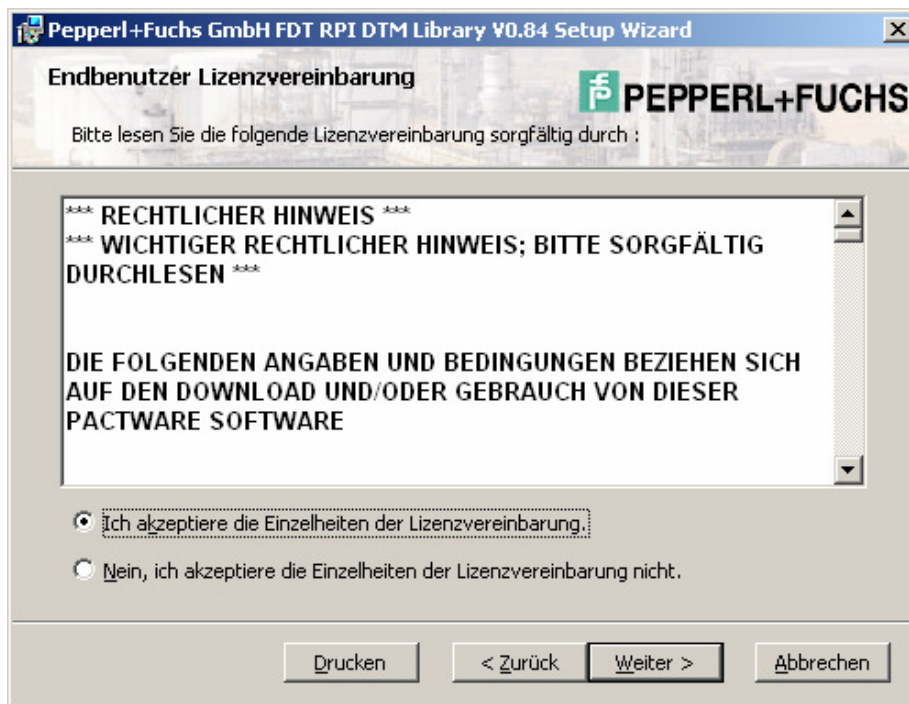
Select DTM-Collection Remote I/O System RPI and confirm by clicking to **Install selected application(s)**.



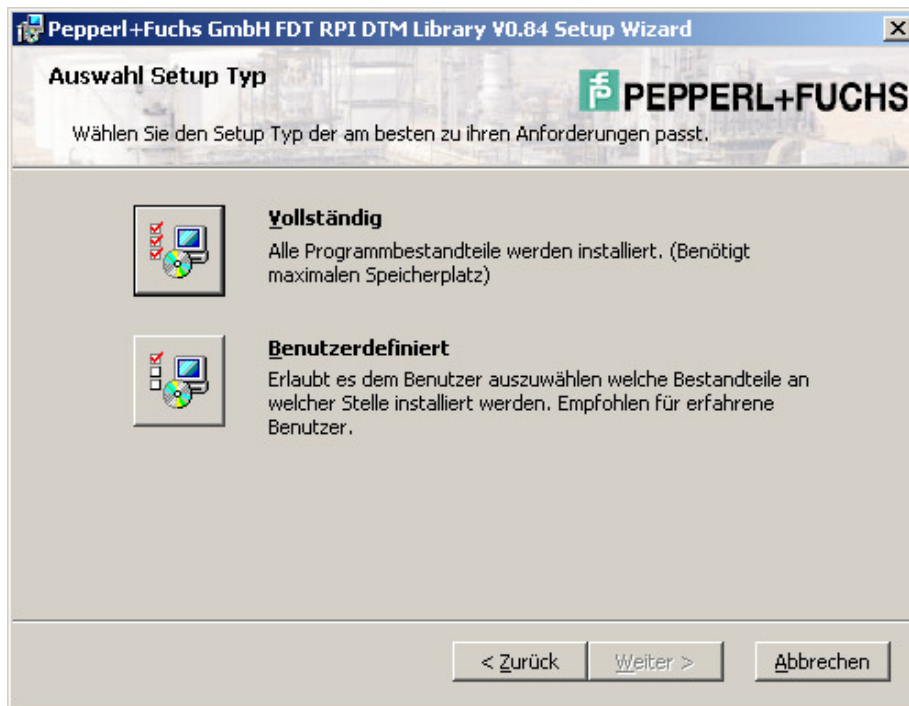
Confirm by clicking to **Weiter**.



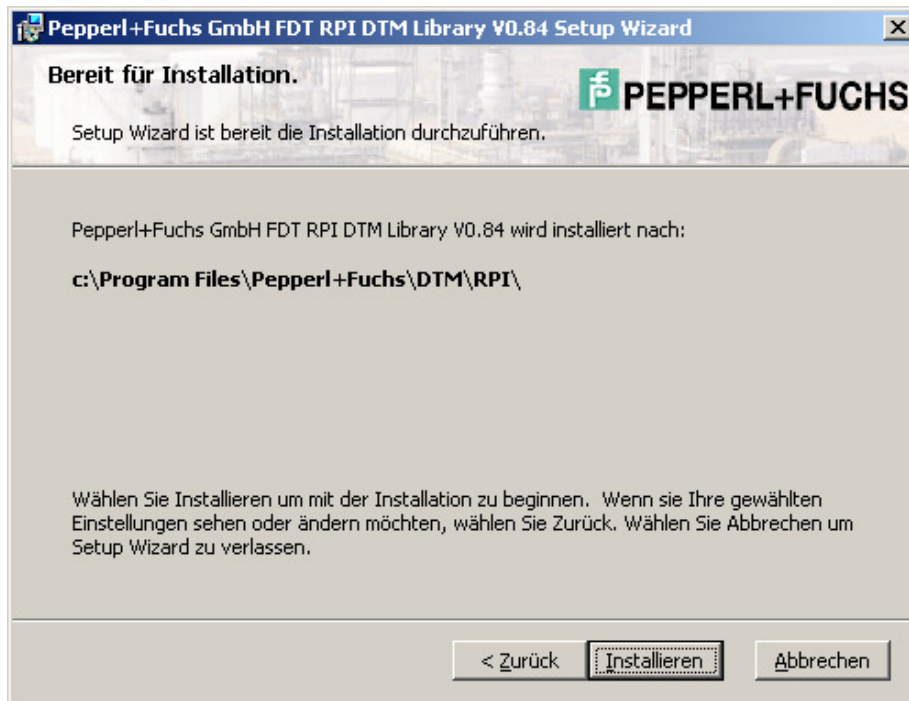
Accept the conditions of the license agreement and confirm by clicking to **Weiter**



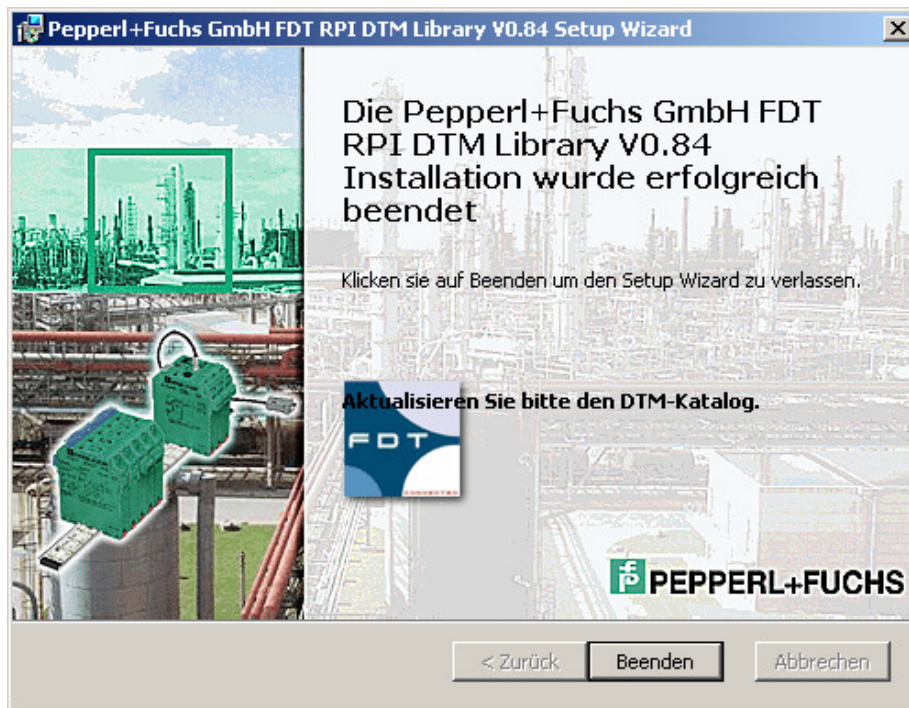
Select the required setup type



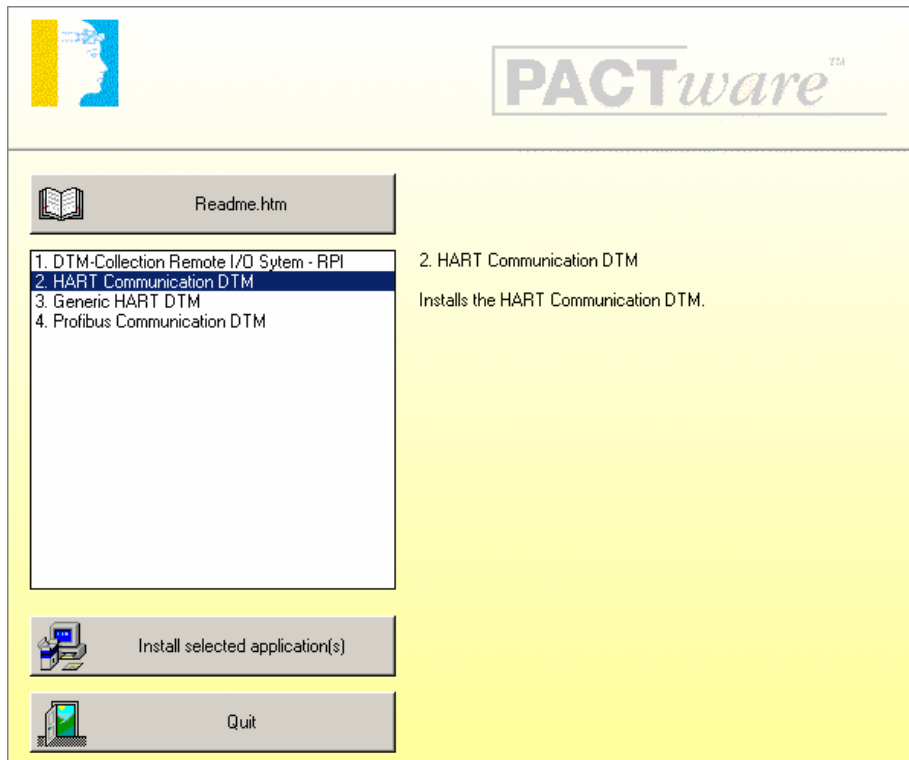
Select **Installieren**. The RPI DTM will now be installed on your computer.



Confirm by clicking to **Beenden** when the installation has been finished.



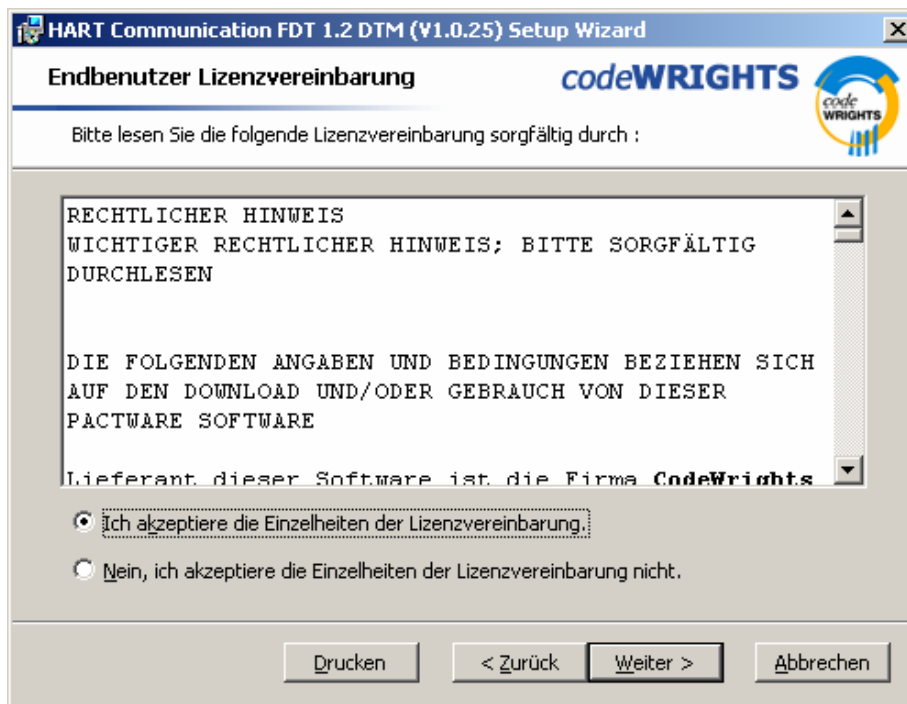
Select HART Communication DTM to install the HART communication driver. Confirm by clicking to **Install selected application(s)**.



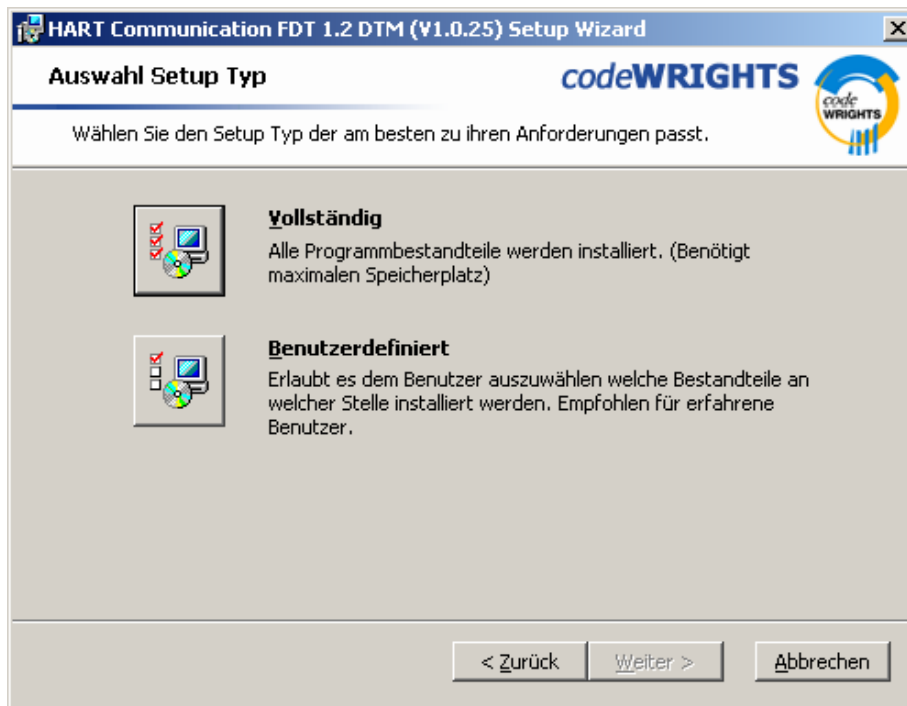
Confirm by clicking to **Weiter**.



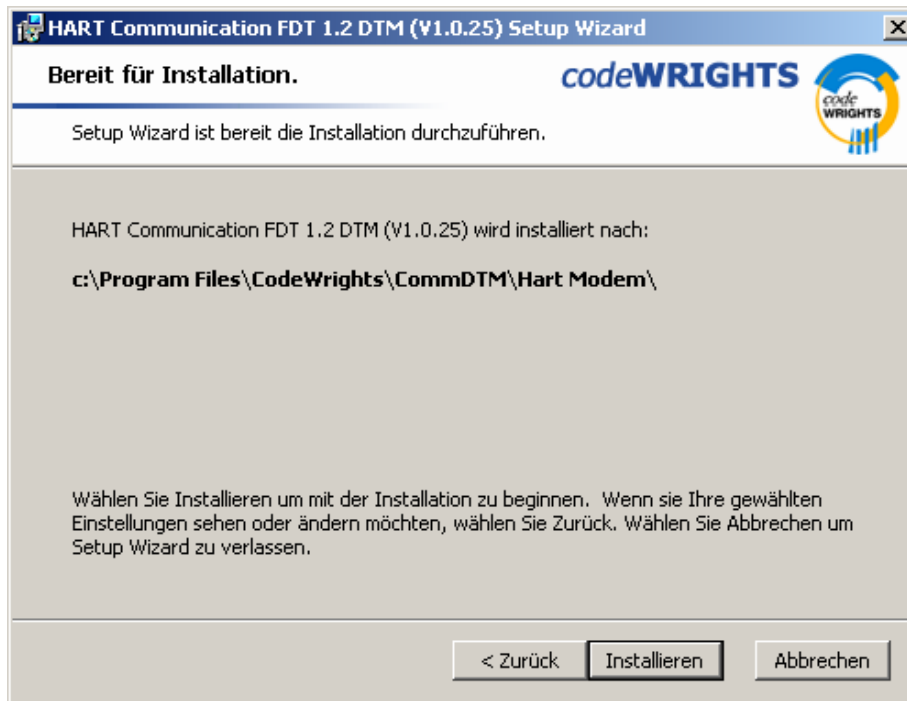
Accept the conditions of the license agreement and confirm by clicking to **Weiter**



Select the required setup type



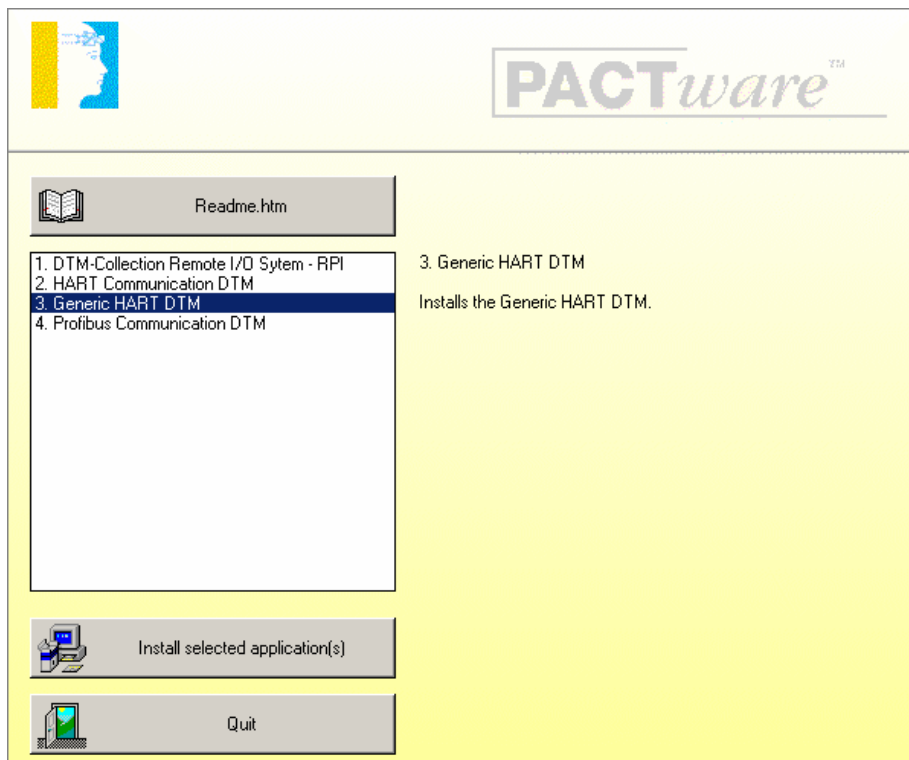
Select **Installieren**. The HART Communication DTM will now be installed on your computer.



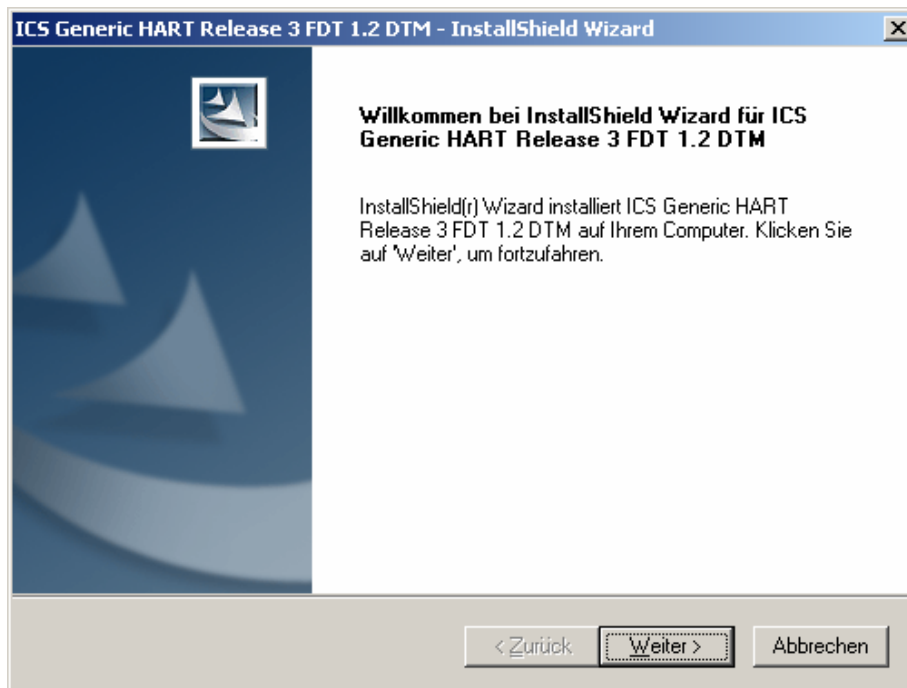
Confirm by clicking to **Beenden** when the installation has been finished.



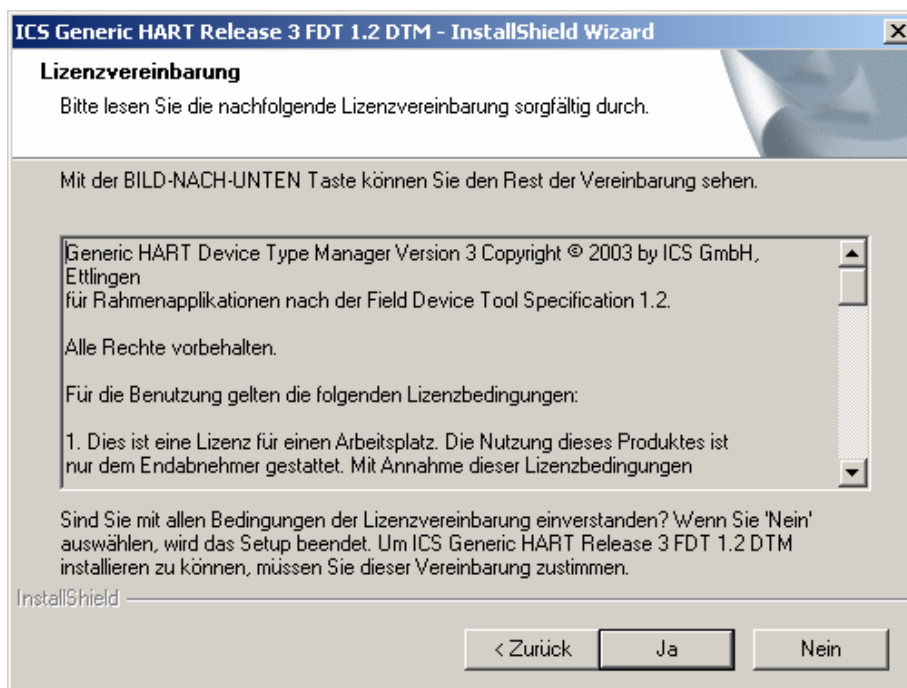
Select Generic HART DTM to install the generic HART device driver. Confirm by clicking to **Install selected application(s)**.



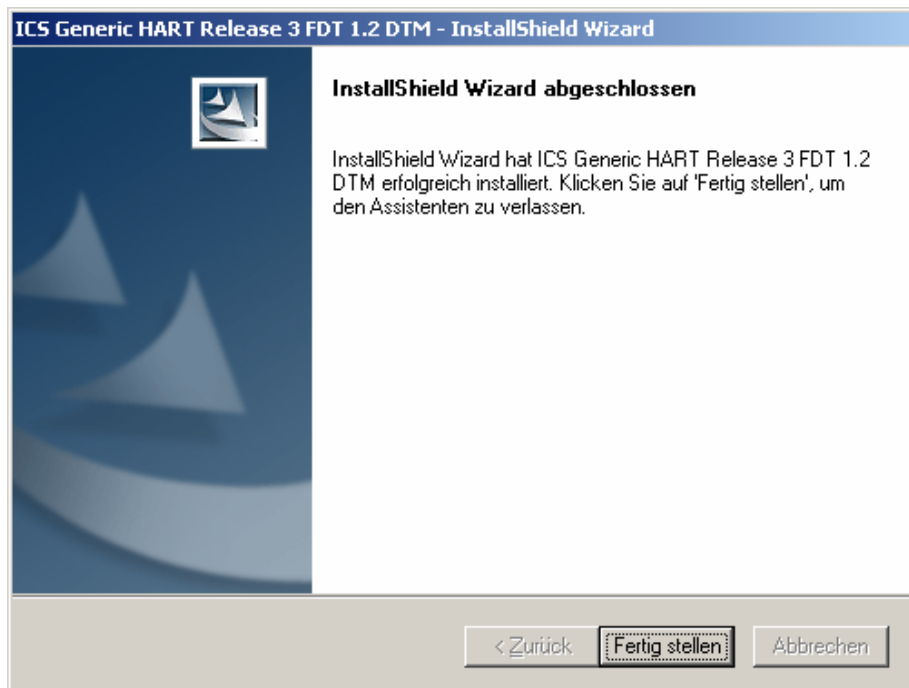
Confirm by clicking to **Weiter**.



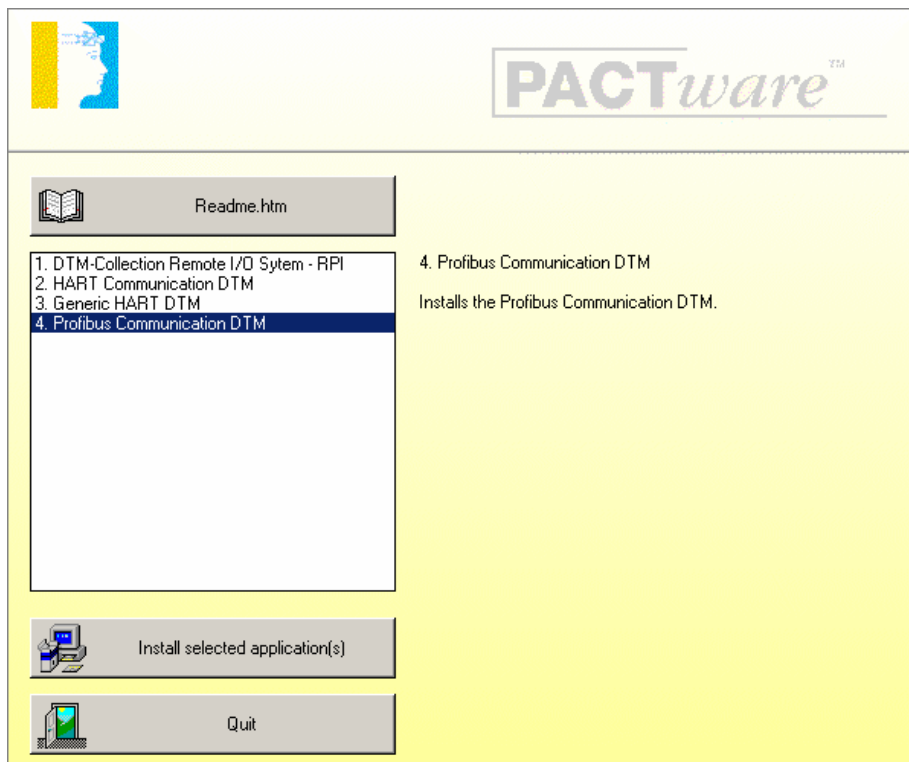
Accept the conditions of the license agreement and confirm by clicking to **Ja**



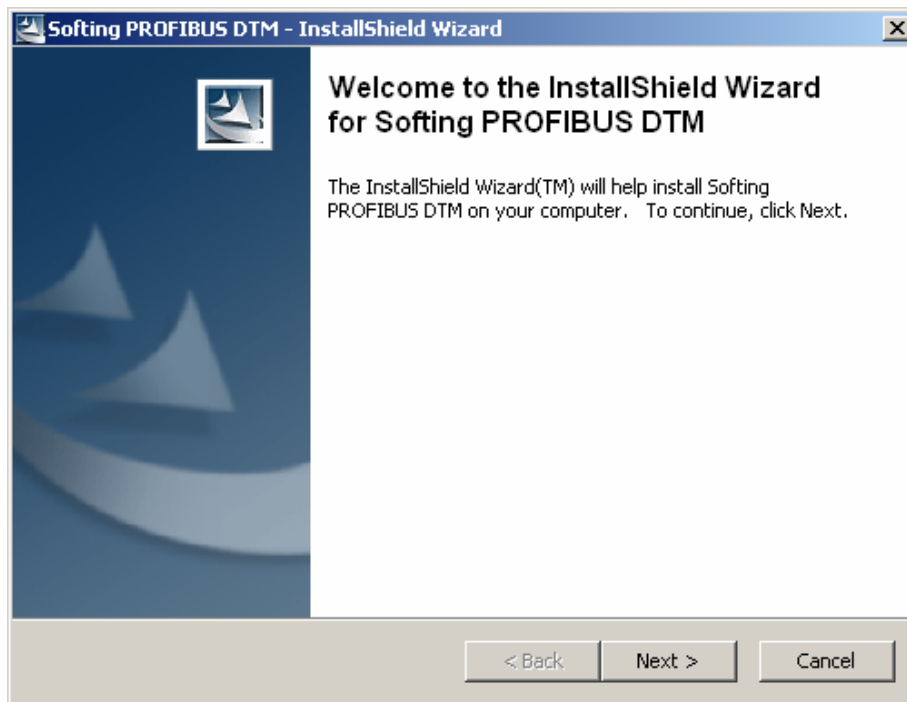
Confirm by clicking to **Fertig stellen** when the installation has been finished.



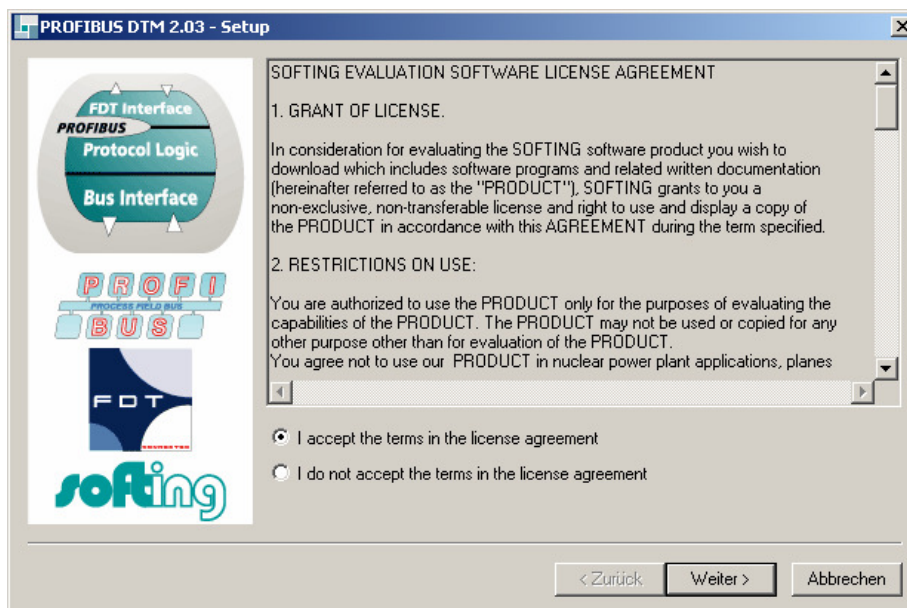
Select Profibus Communication DTM to install the Profibus communication driver. Confirm by clicking to **Install selected application(s)**.



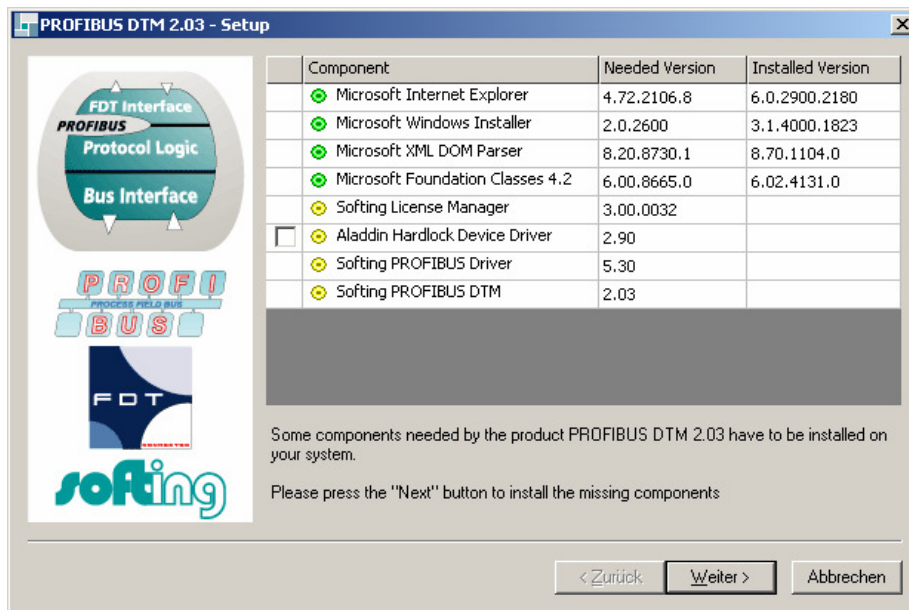
Confirm by clicking to **Next**.



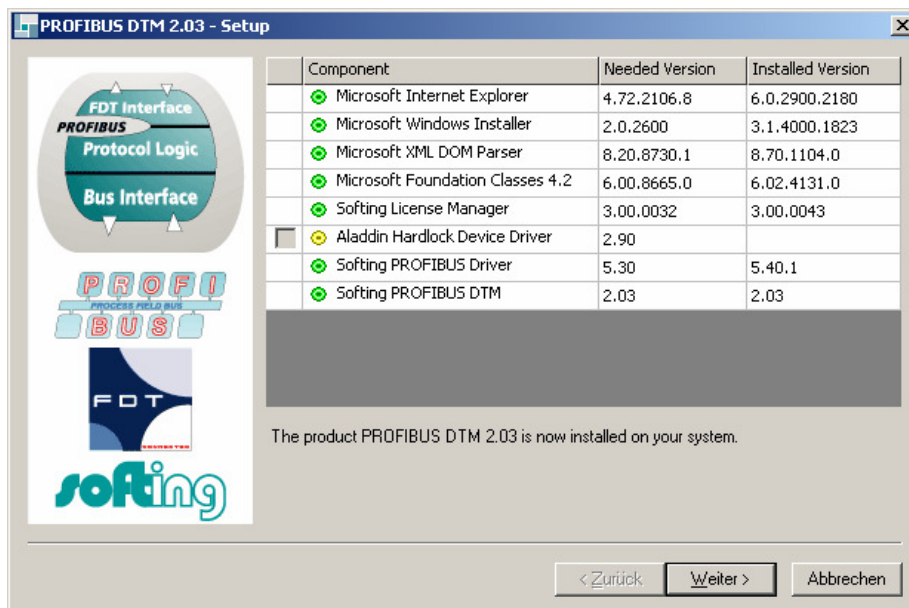
Accept the conditions of the license agreement and confirm by clicking to **Weiter**



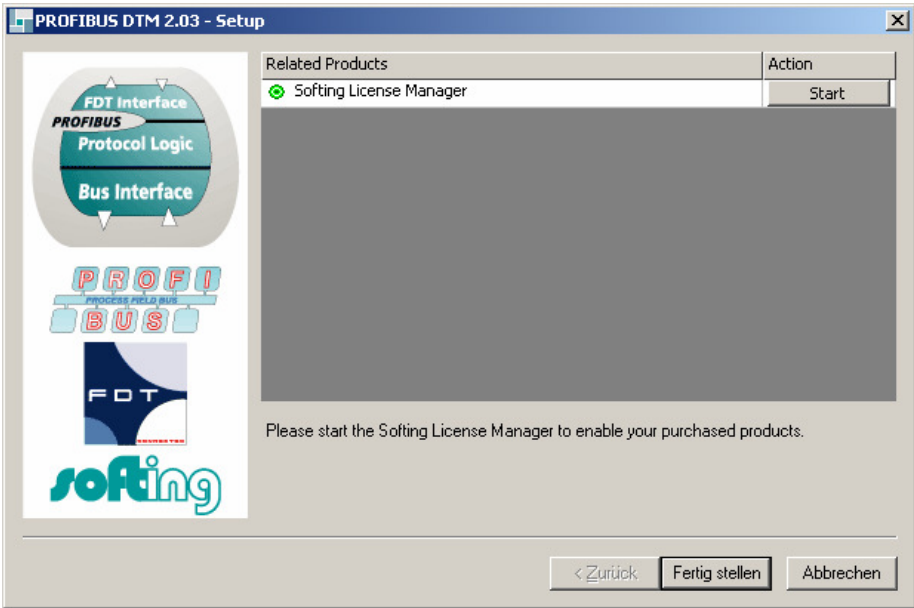
Confirm by clicking to **Weiter** to install the Profibus Communication DTM components



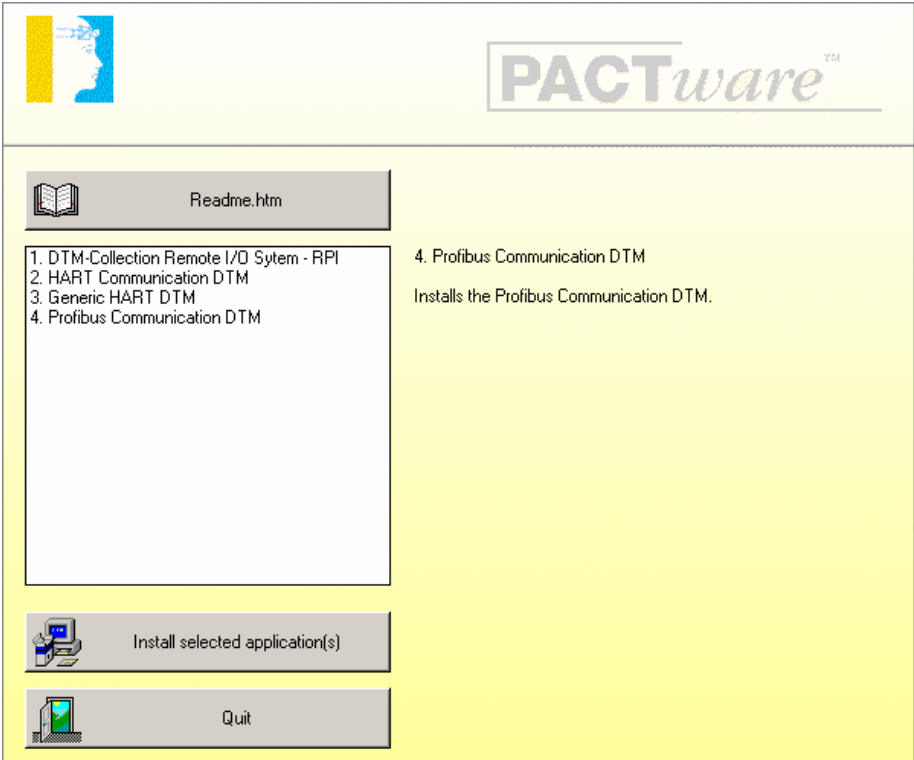
Confirm by clicking **Weiter** when the installation has been finished.



Confirm by clicking to **Fertig stellen** to start the Licence manager



Confirm by clicking to **Quit** to finish the installation of the DTM-Collection Remote I/O System RPI.

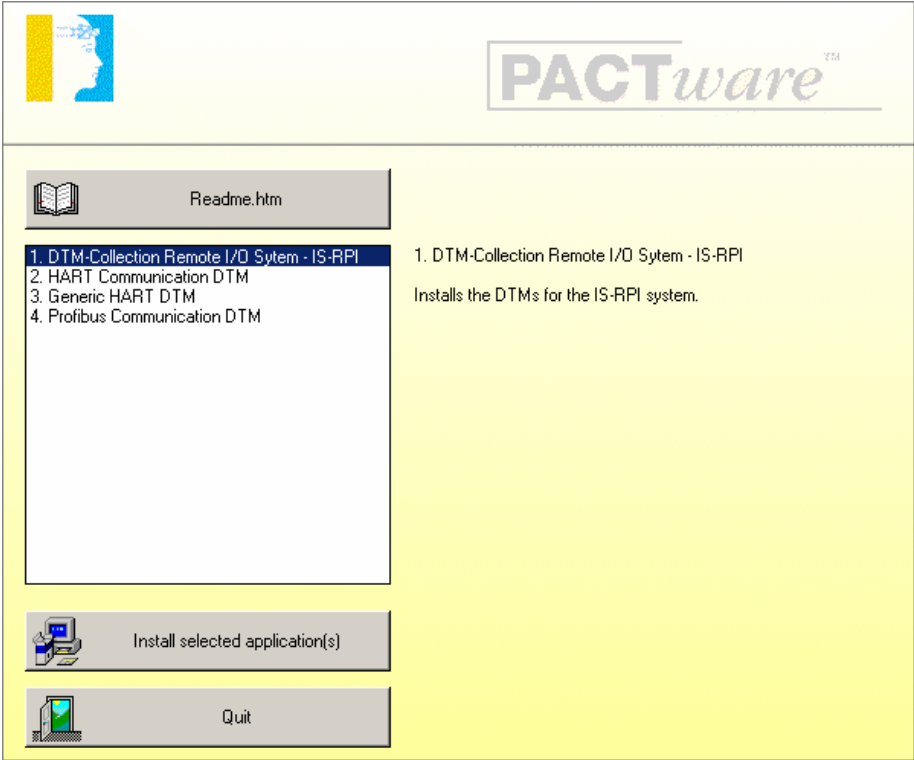


Installation of DTM-Collection Remote I/O System IS-RPI

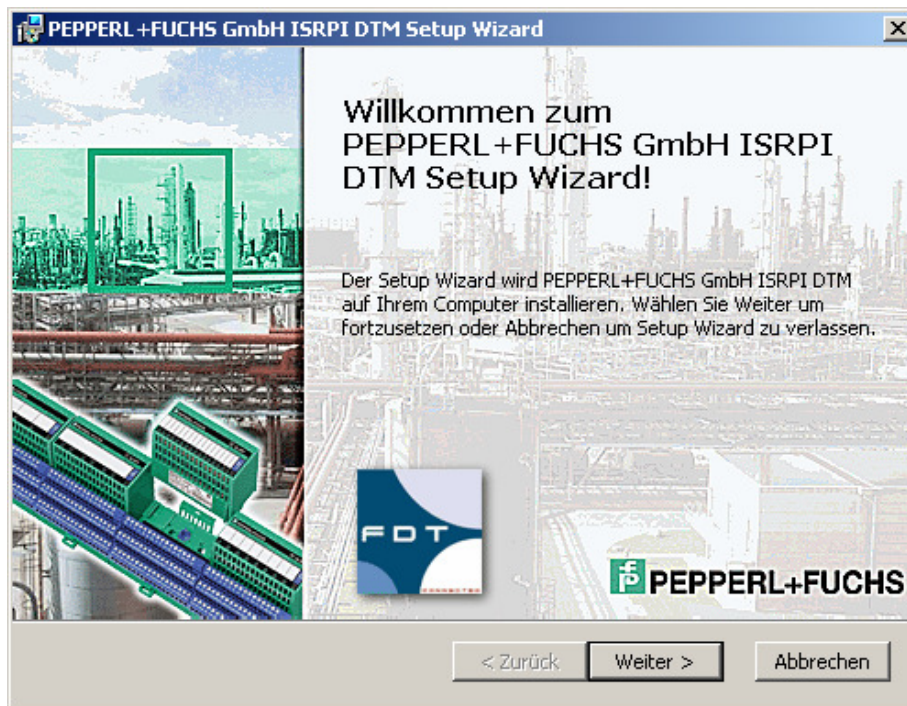
Download the **DTM-Collection Remote I/O System IS-RPI** from the Pepperl+Fuchs homepage referred to as www.pepperl-fuchs.com. You can find the DTM-collection in the Product Selector.

Decompress the downloaded **ZIP** files and let store the contents to separate locations on your hard drive. Install the application by clicking on its corresponding **autorun.exe**.

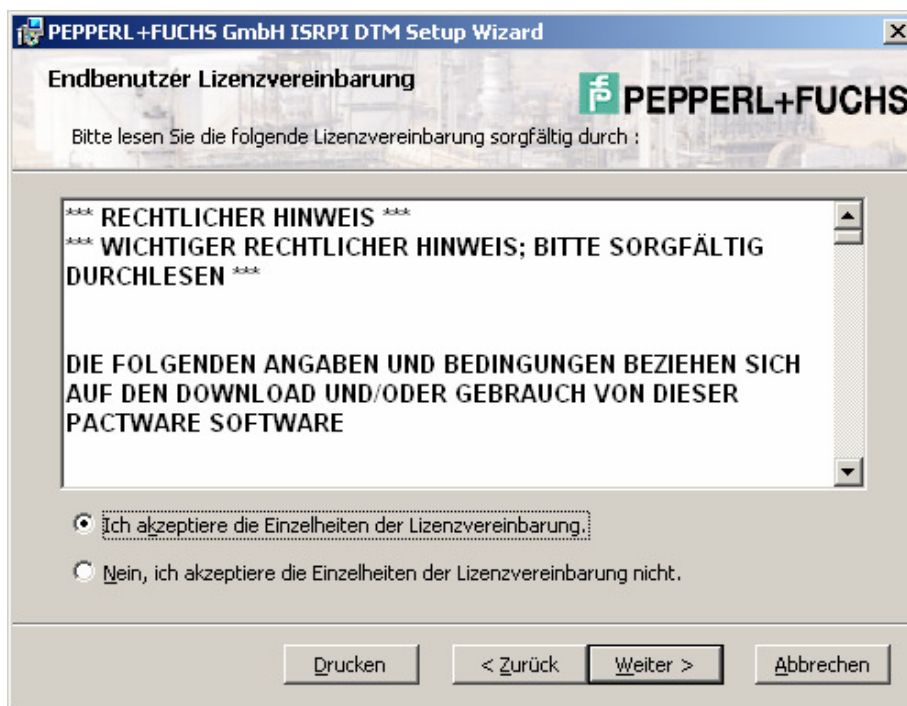
Select DTM-Collection Remote I/O System IS-RPI and confirm by clicking to **Install selected application(s)**.



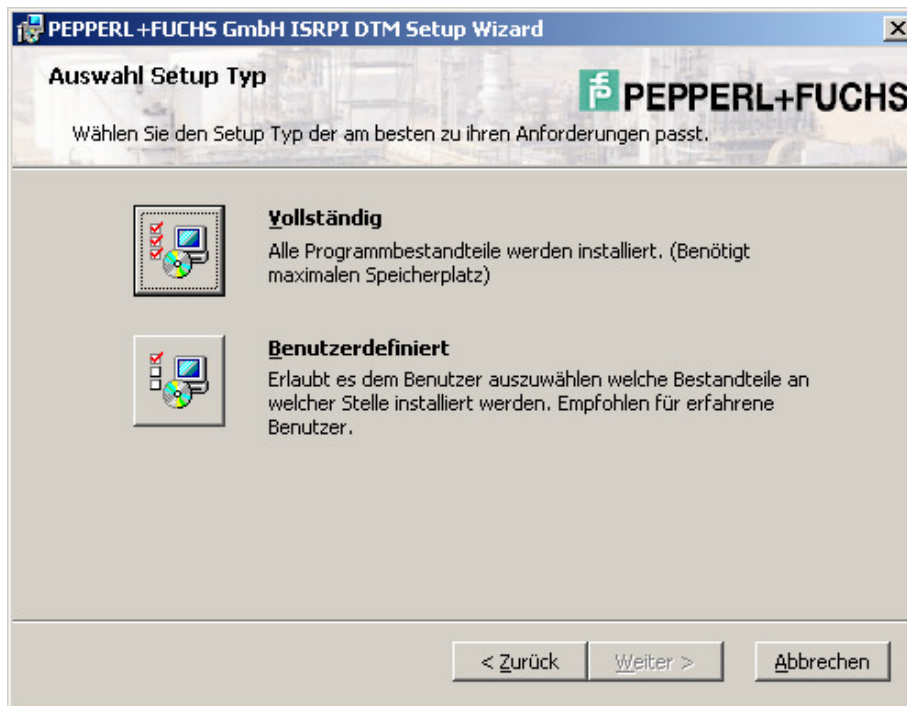
Confirm by clicking to **Weiter**



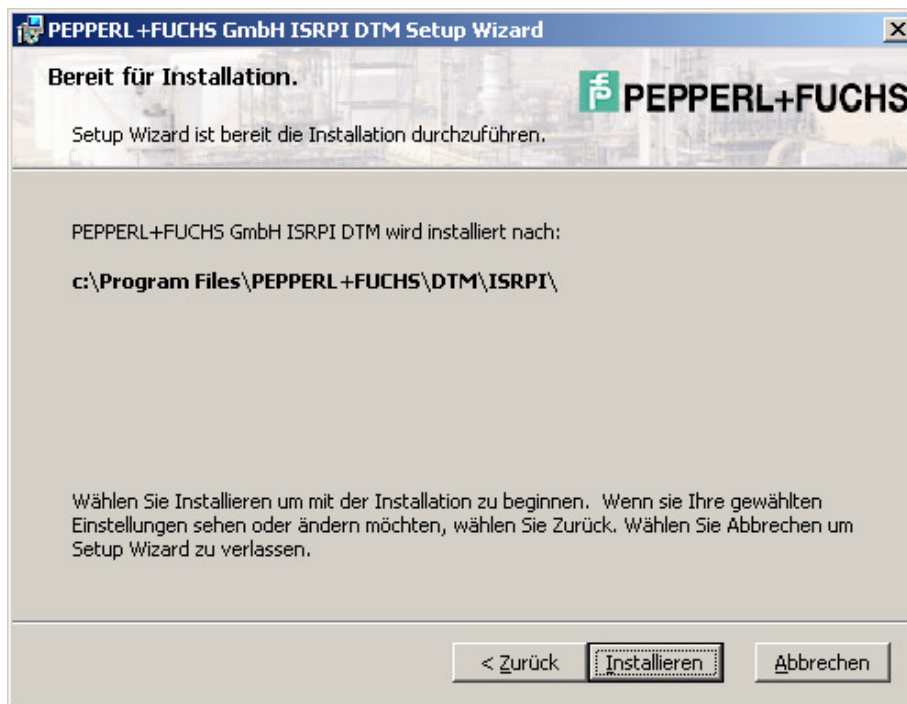
Accept the conditions of the license agreement and confirm by clicking to **Weiter**



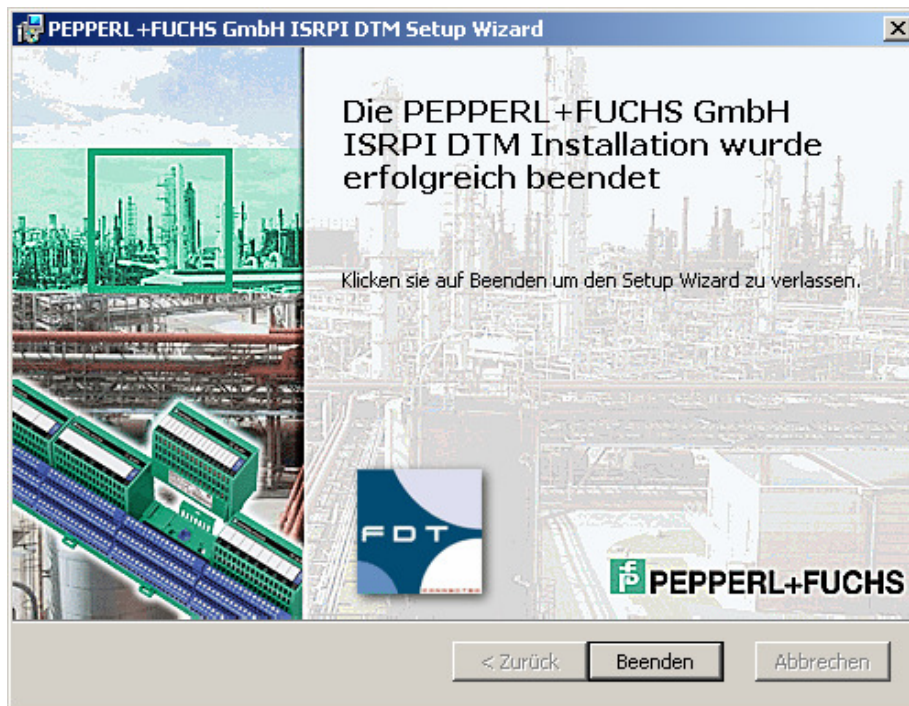
Select the required setup type



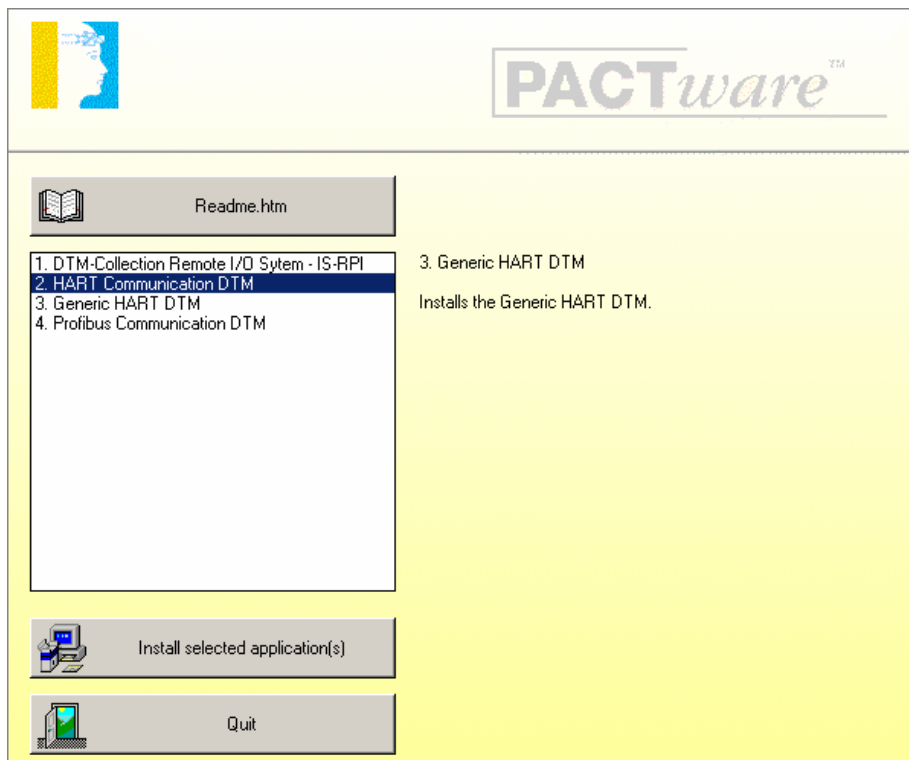
Select **Installieren** to install the IS-RPI DTM.



Confirm by clicking to **Beenden** when the installation has been finished.



Use the same procedure to install the HART Communication DTM, the Generic HART DTM and the PROFIBUS Communication DTM as used for the Installation of the DTM-Collection Remote I/O System RPI. Confirm by clicking to Quit to finish the Installation of the DTM-Collection Remote I/O System RPI.

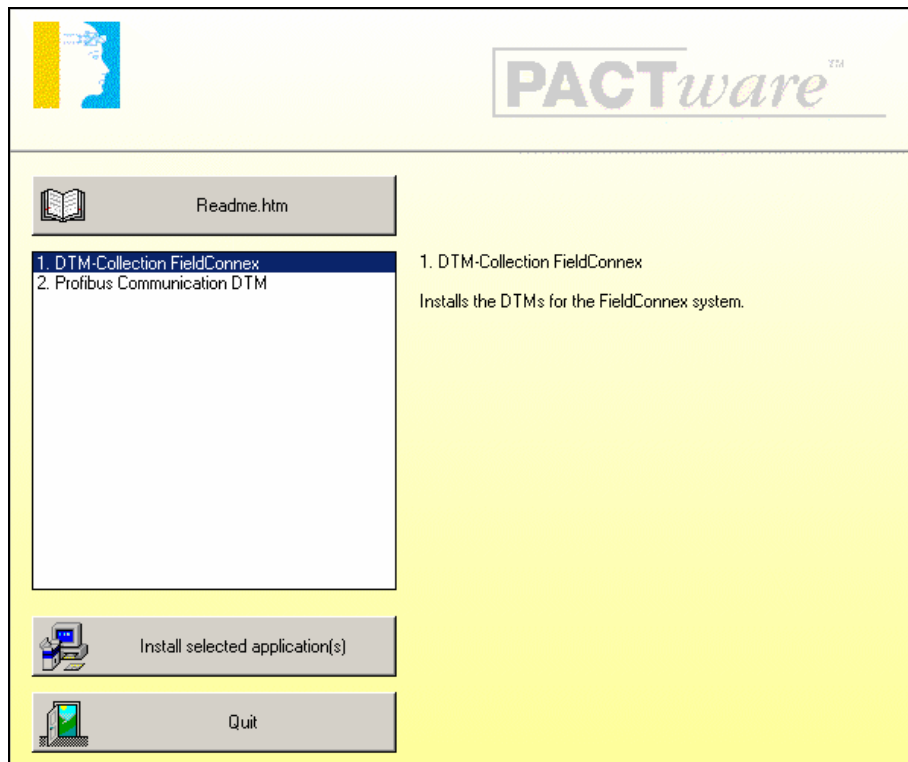


Installation of DTM-Collection FieldConnex

Download the **DTM-Collection FieldConnex** from the Pepperl+Fuchs homepage referred to as www.pepperl-fuchs.com. You can find the DTM-collection in the Product Selector.

Decompress the downloaded **ZIP** files and let store the contents to separate locations on your hard drive. Install the application by clicking on its corresponding **autorun.exe**.

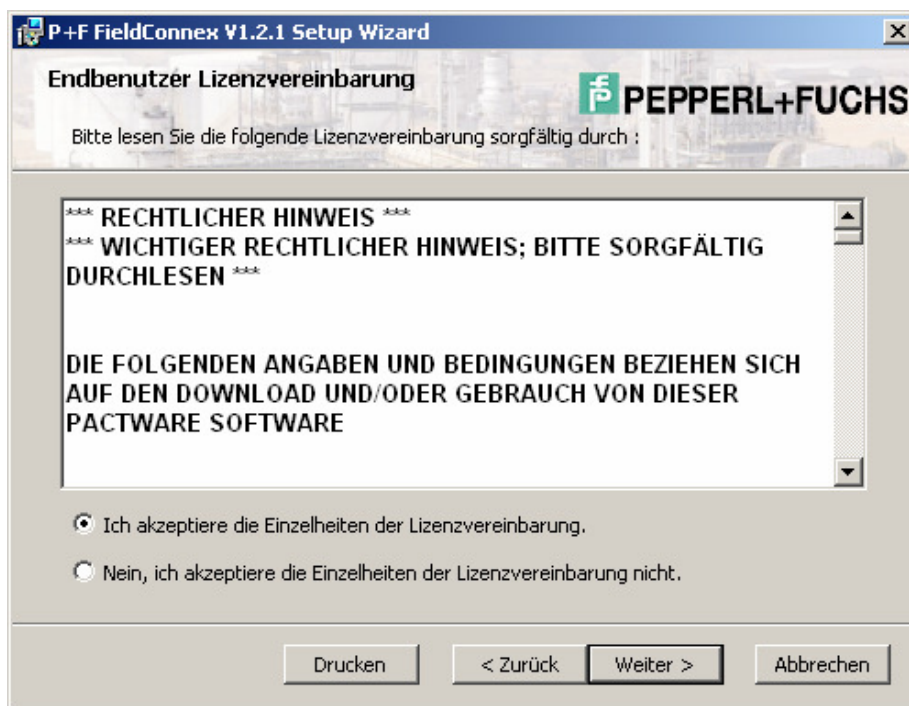
Select DTM-Collection FieldConnex and confirm by clicking to **Install selected application(s)**.



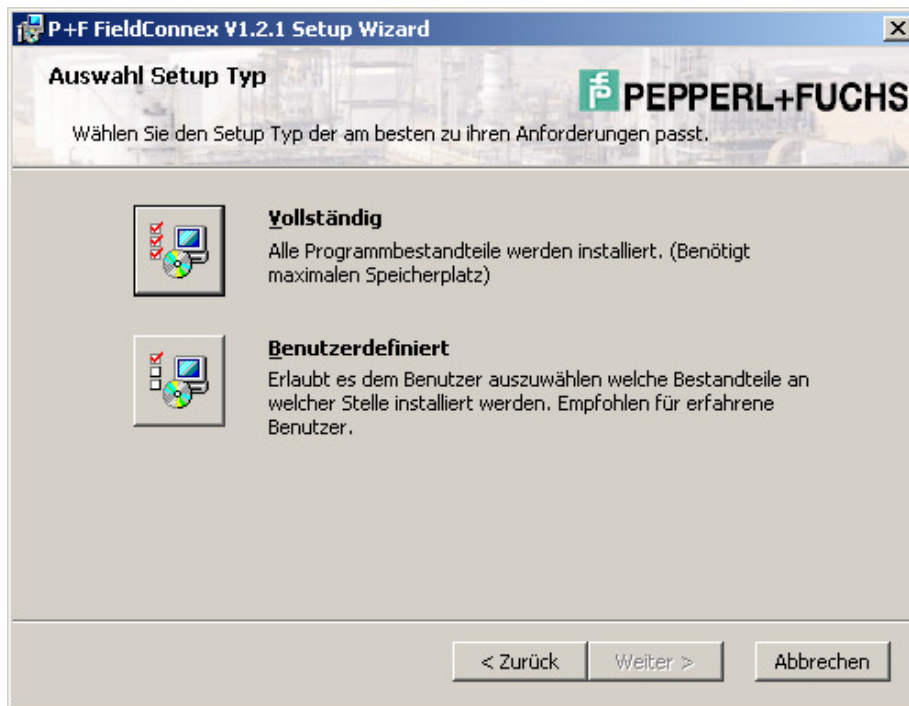
Confirm by clicking to **Weiter**



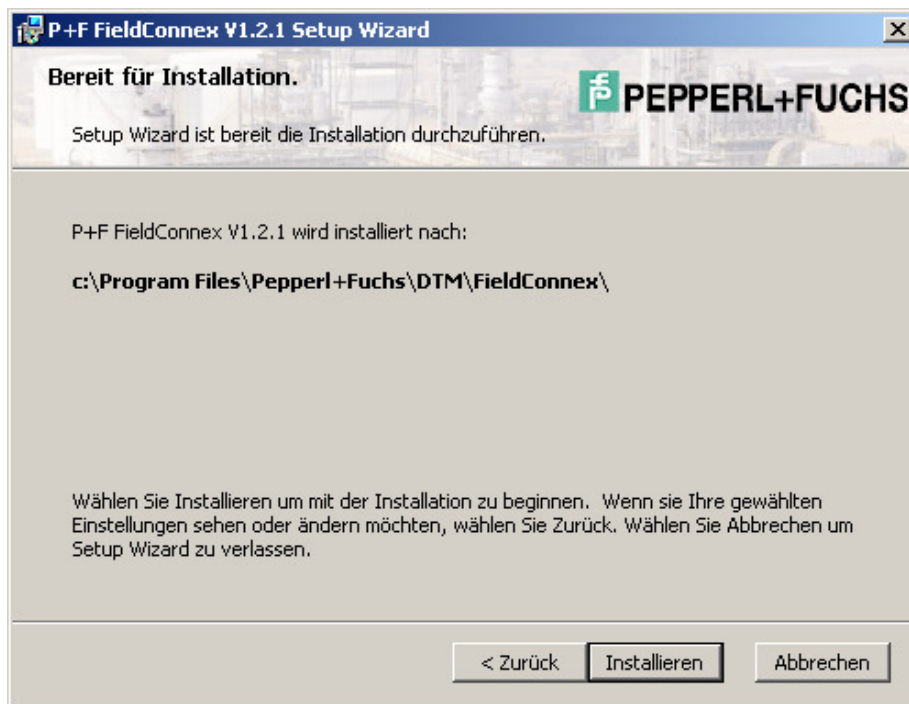
Accept the conditions of the license agreement and confirm by clicking to **Weiter**



Select the required setup type



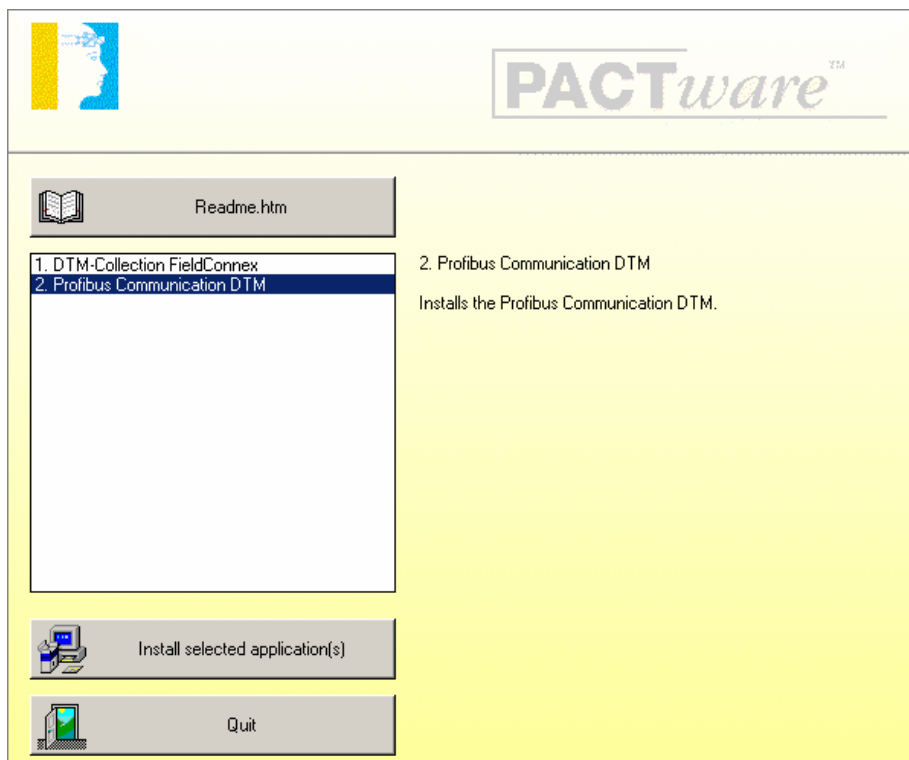
Select **Installieren** to install the DTM-Collection FieldConnex.



Confirm by clicking to **Beenden** when the installation has been finished.



Use the same procedure to install the PROFIBUS Communication DTM as used for the Installation of the DTM-Collection Remote I/O System RPI. Confirm by clicking to Quit to finish the Installation of the DTM-Collection FieldConnex.

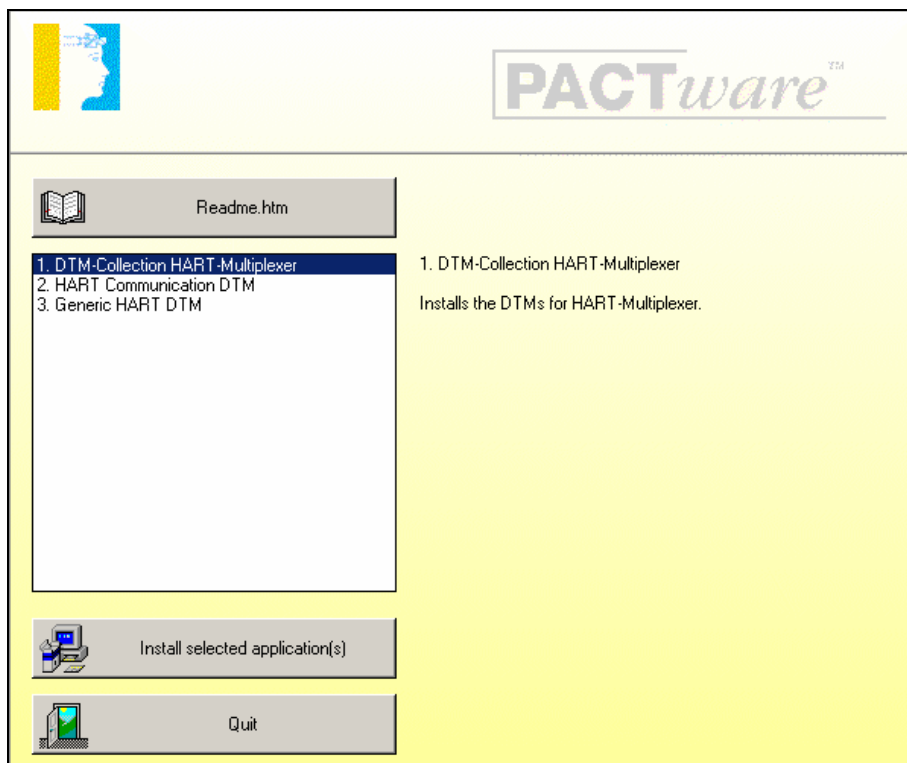


Installation of DTM-Collection HART Multiplexer

Download the **DTM-Collection HART Multiplexer** from the Pepperl+Fuchs homepage referred to as www.pepperl-fuchs.com. You can find the DTM-collection in the Product Selector.

Decompress the downloaded **ZIP** files and let store the contents to separate locations on your hard drive. Install the application by clicking on its corresponding **autorun.exe**.

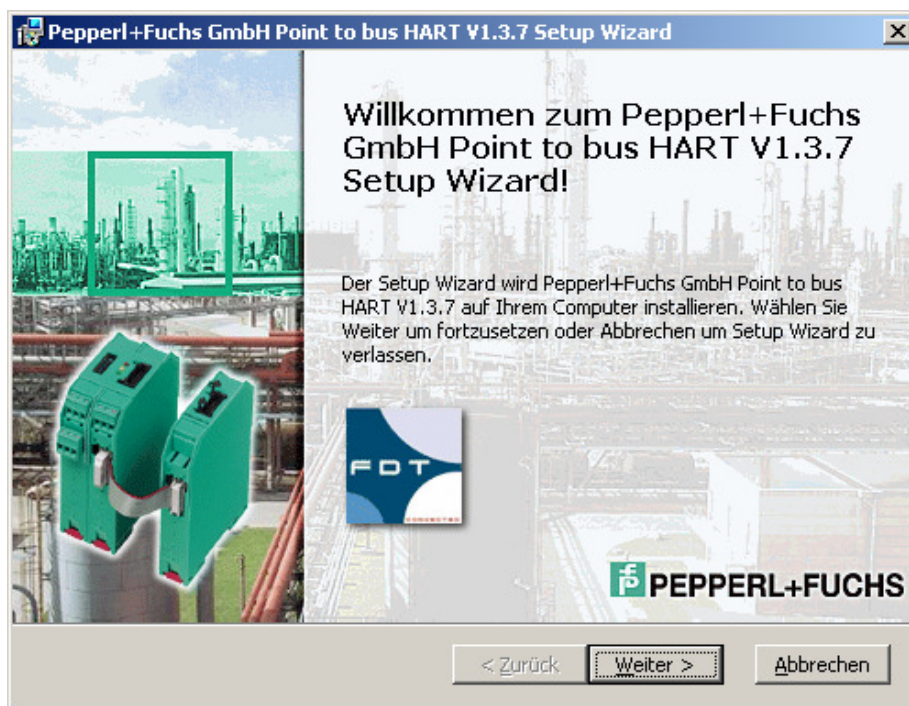
Select DTM-Collection HART Multiplexer and confirm by clicking to **Install selected application(s)**.



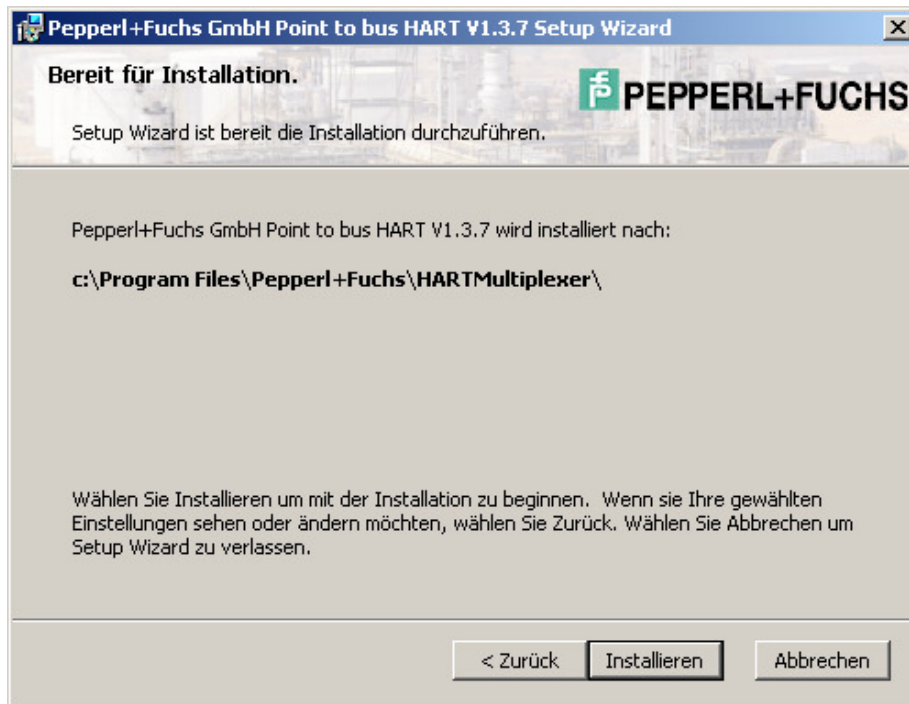
Confirm by clicking to **Weiter**.



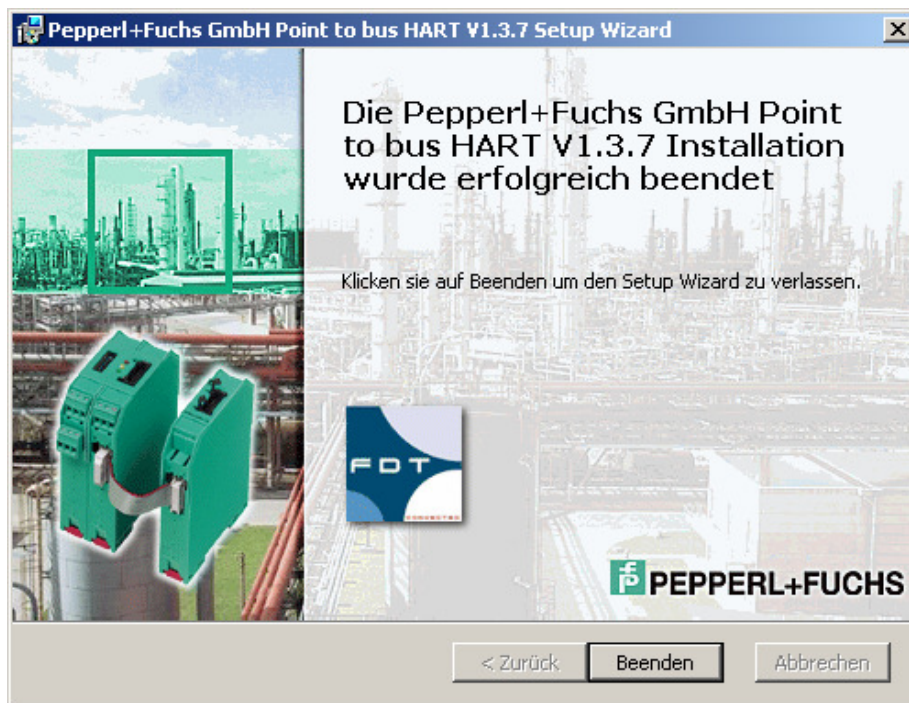
Accept the conditions of the license agreement and confirm by clicking to **Weiter**



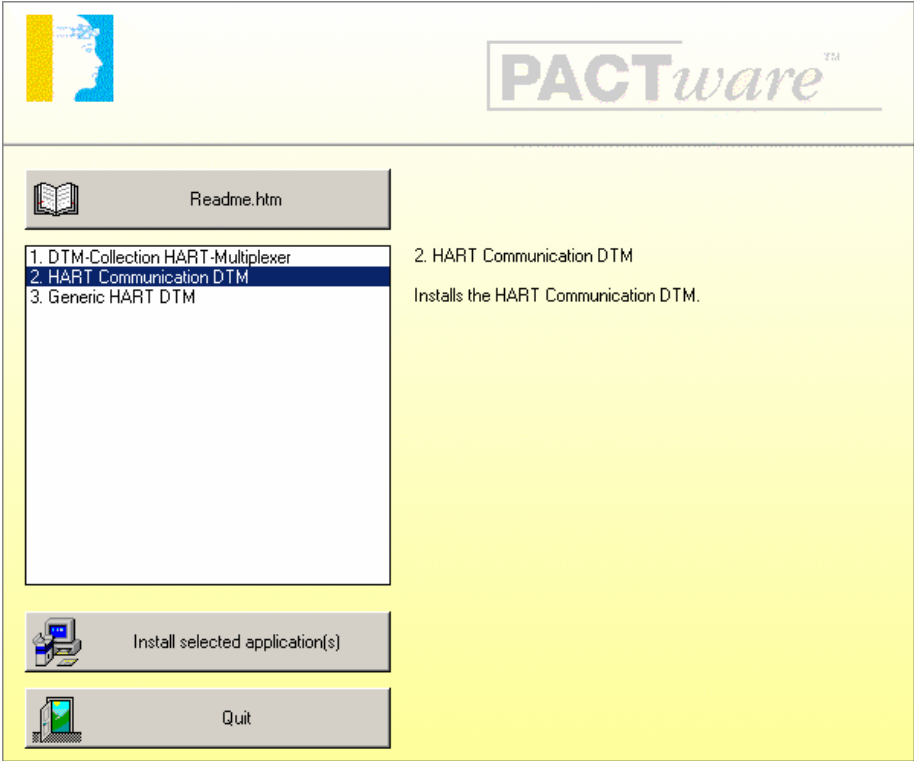
Select **Installieren**. The HART Multiplexer DTM will now be installed on your computer.



Confirm by clicking to **Beenden** when the installation has been finished.



Use the same procedure to install the HART Communication DTM and the Generic HART DTM as used for the Installation of the DTM-Collection Remote I/O System RPI. Confirm by clicking to Quit to finish the Installation of the DTM-Collection HART Multiplexer.

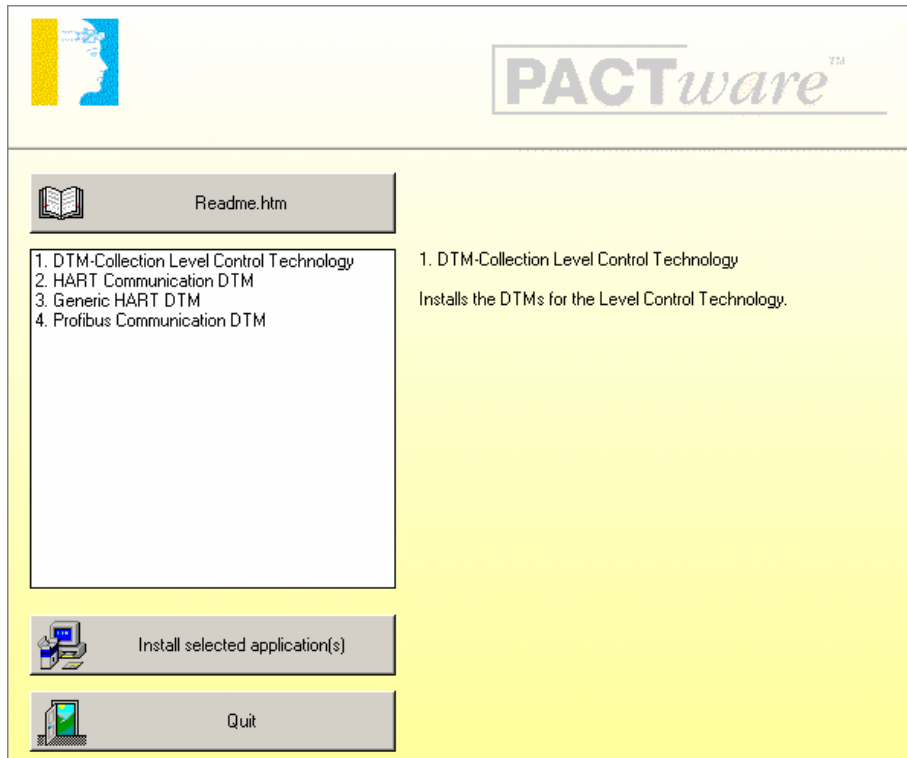


Installation of DTM-Collection Level Control Technology

Download the **DTM-Collection Level Control Technology** from the Pepperl+Fuchs homepage referred to as www.pepperl-fuchs.com. You can find the DTM-collection in the Product Selector.

Decompress the downloaded **ZIP** files and let store the contents to separate locations on your hard drive. Install the application by clicking on its corresponding **autorun.exe**.

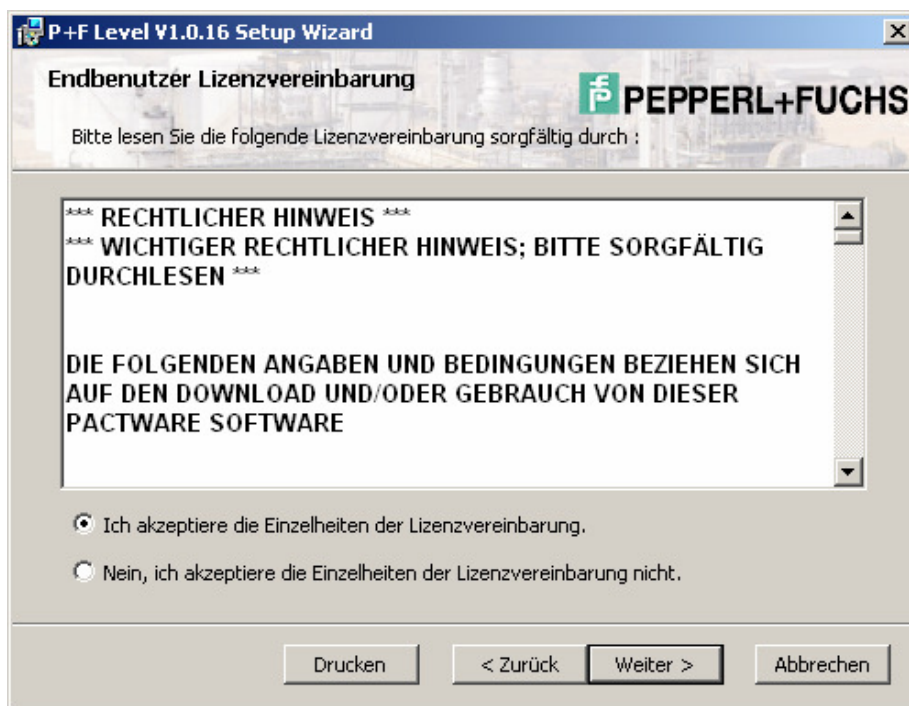
Select DTM-Collection Level Control Technology and confirm by clicking to **Install selected application(s)**.



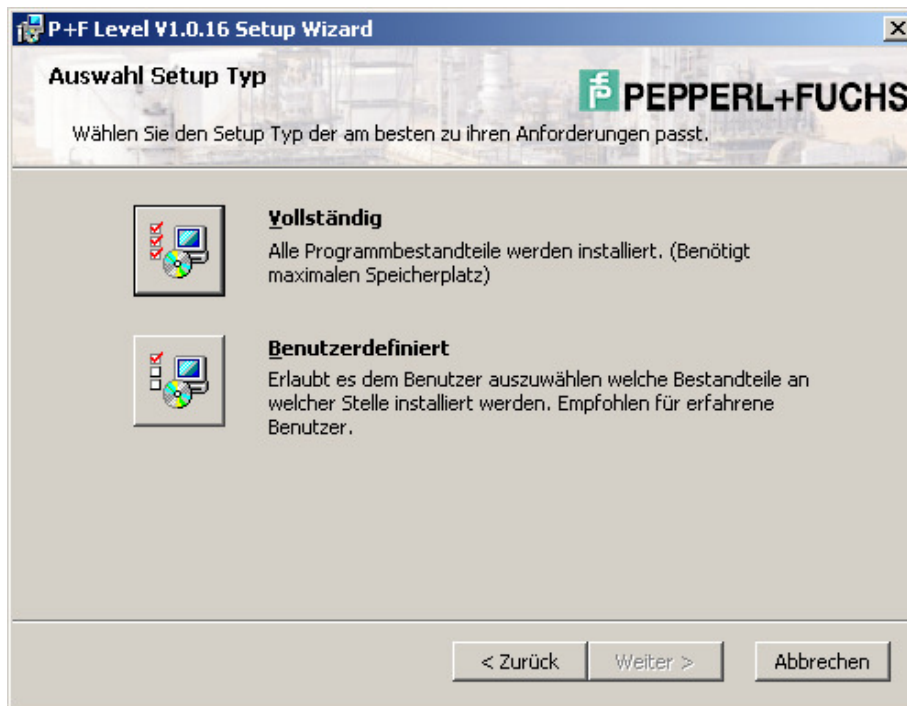
Confirm by clicking to **Weiter**.



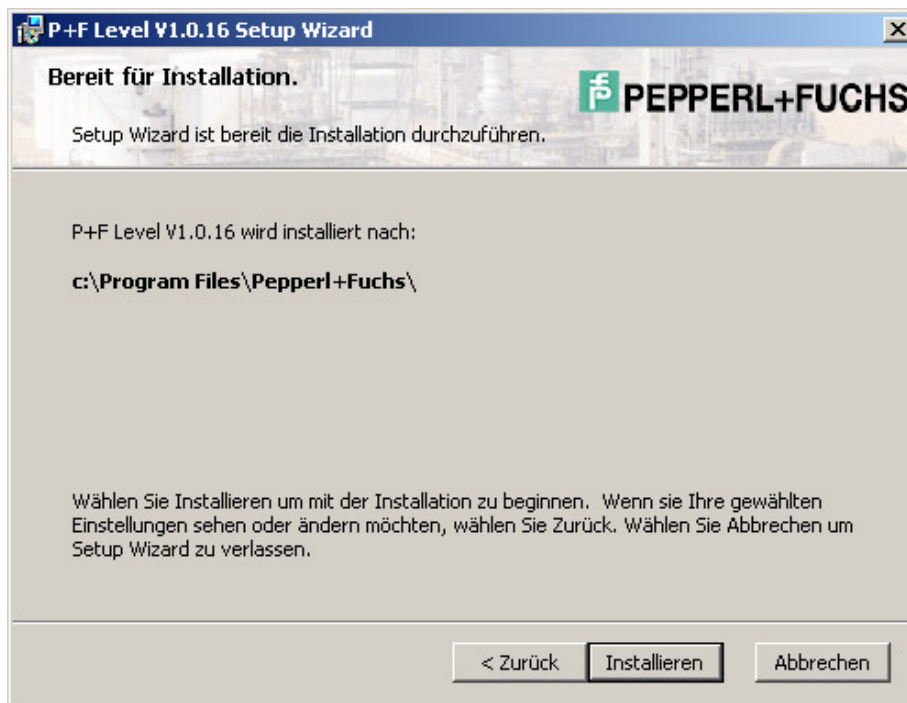
Accept the conditions of the license agreement and confirm by clicking to **Weiter**



Select the required setup type



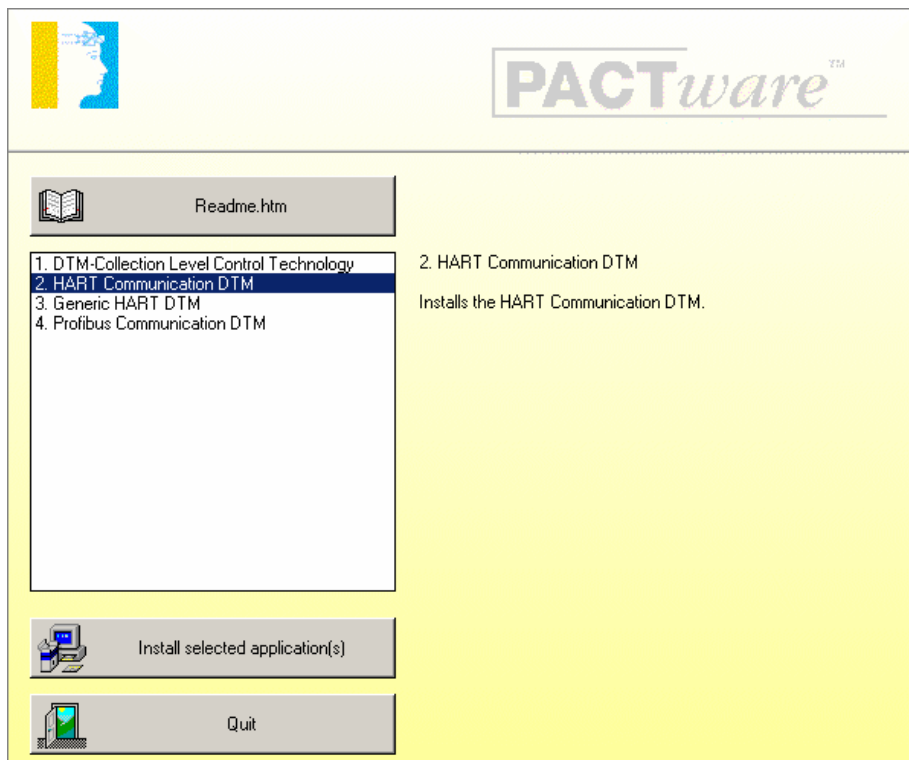
Select **Installieren**. The DTM-Collection Level Control Technology will now be installed on your computer.



Confirm by clicking to **Beenden** when the installation has been finished.



Use the same procedure to install the HART Communication DTM, the Generic HART DTM and the PROFIBUS Communication DTM as used for the Installation of the DTM-Collection Remote I/O System RPI. Confirm by clicking to Quit to finish the Installation of the DTM-Collection Level Control Technology.

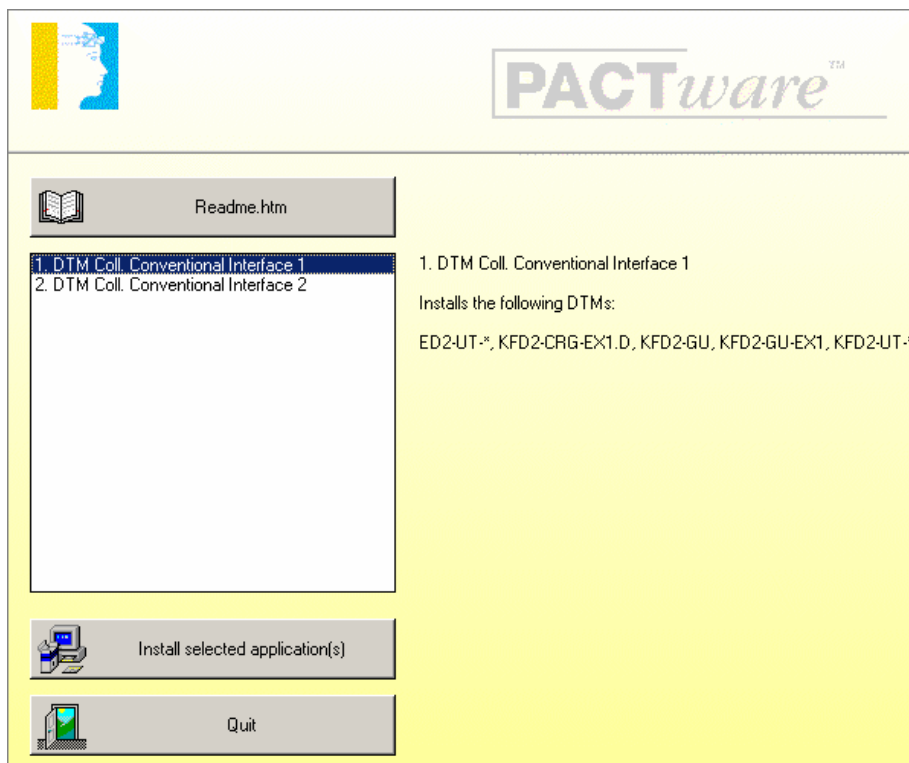


Installation of DTM-Collection Interface

Download the **DTM-Collection Interface** from the Pepperl+Fuchs homepage referred to as www.pepperl-fuchs.com. You can find the DTM-collection in the Product Selector.

Decompress the downloaded **ZIP** files and let store the contents to separate locations on your hard drive. Install the application by clicking on its corresponding **autorun.exe**.

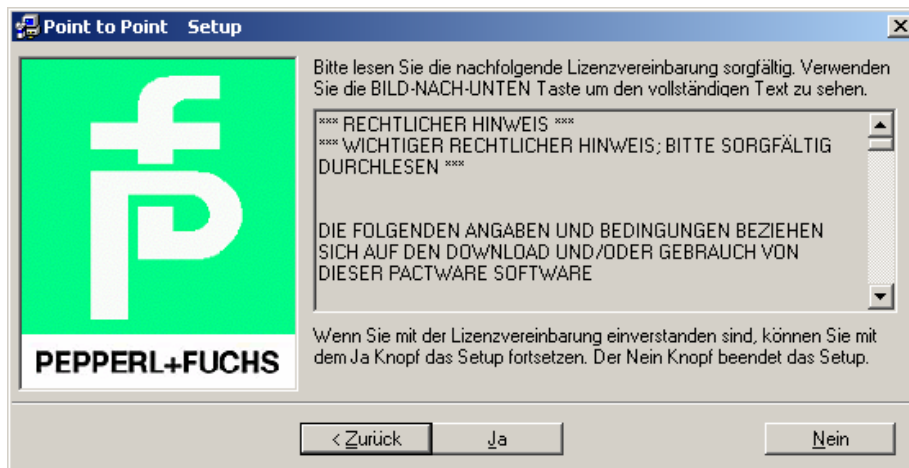
Select DTM-Collection Interface and confirm by clicking to **Install selected application(s)**.



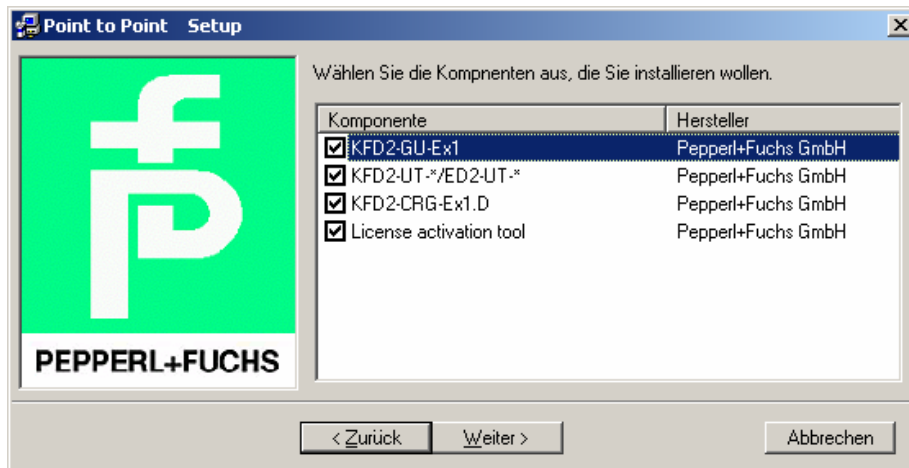
Select the required language and confirm by clicking to „**Weiter**“



Accept the conditions of the license agreement and confirm by clicking to **JA**



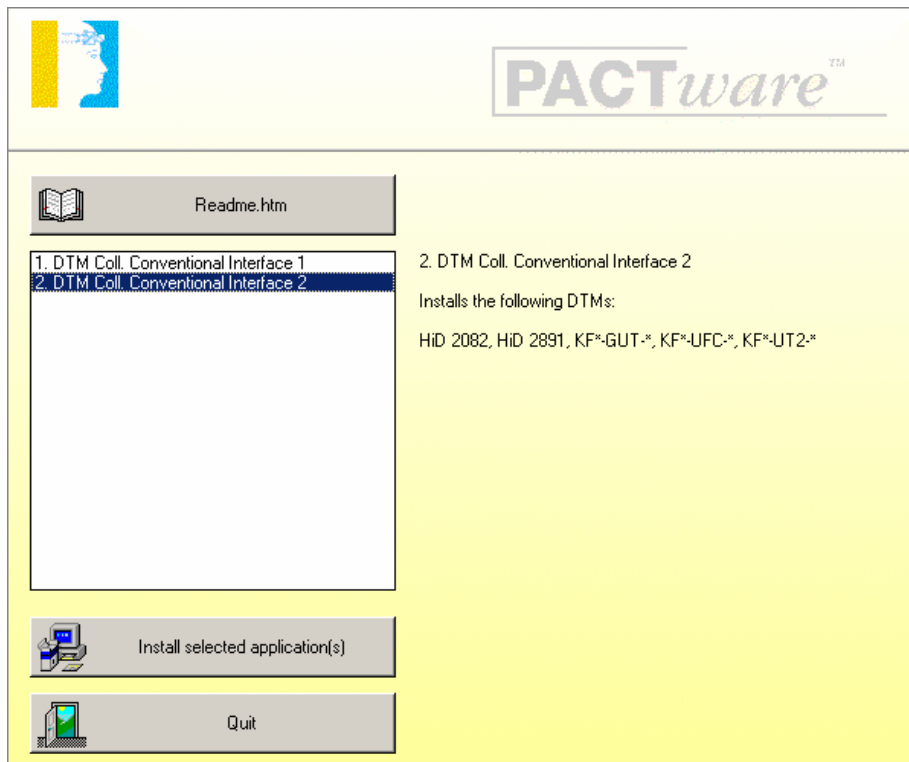
Select the required DTMs and confirm by clicking to **Weiter**



Confirm by clicking to **OK** when the installation has been finished.



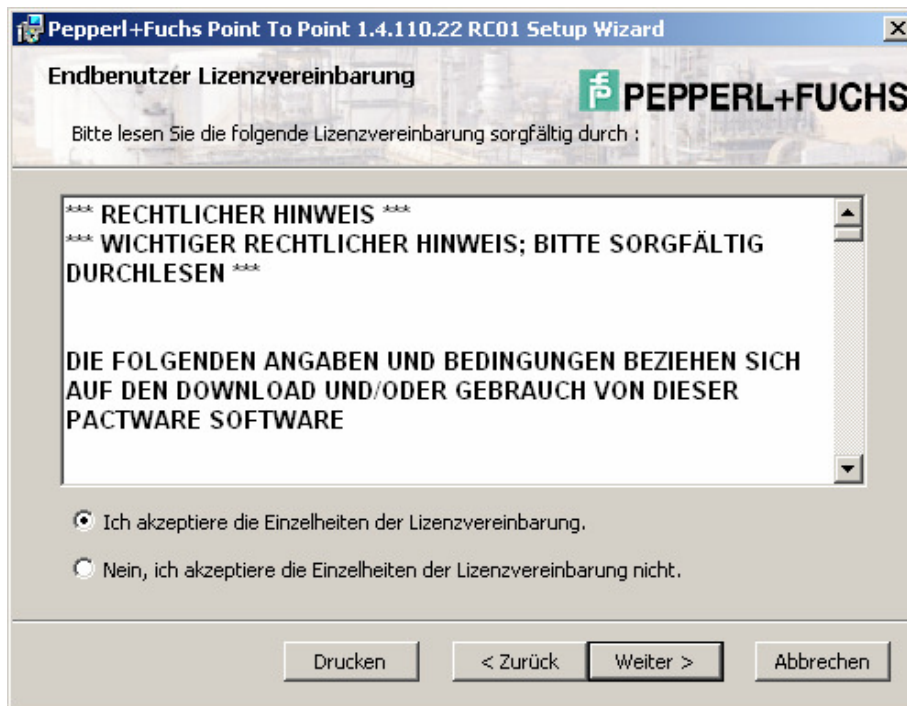
Select DTM-Collection Conventional Interface 2 by clicking to **Install selected application(s)**.



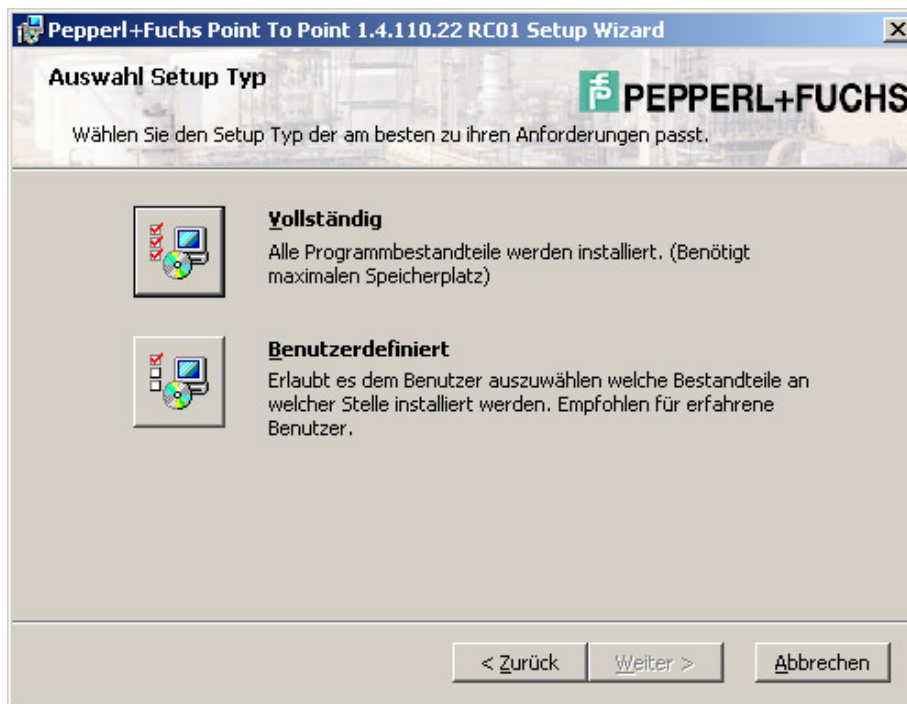
Confirm by clicking to **Weiter**.



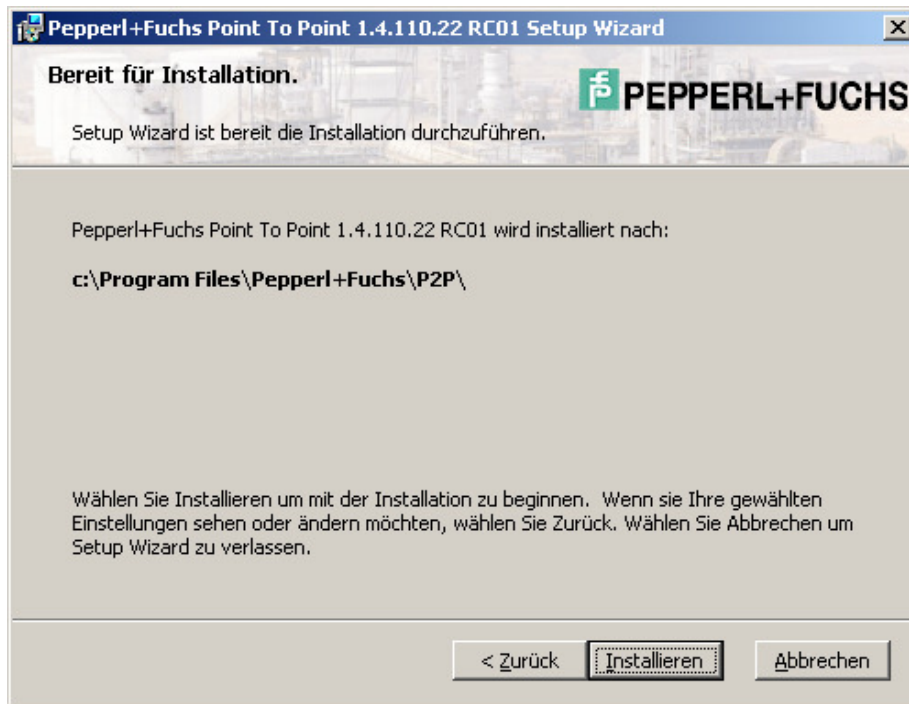
Accept the conditions of the license agreement and confirm by clicking to **Weiter**



Select the required setup type



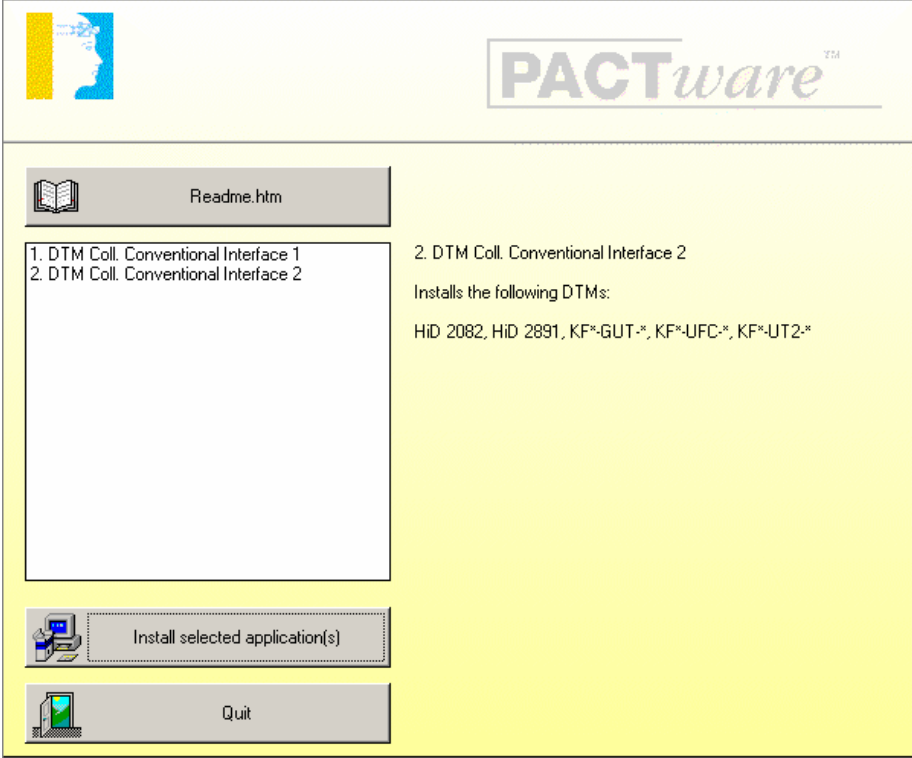
Select **Installieren**. The DTM-Collection Conventional Interface will now be installed on your computer.



Confirm by clicking to **Beenden** when the installation has been finished.

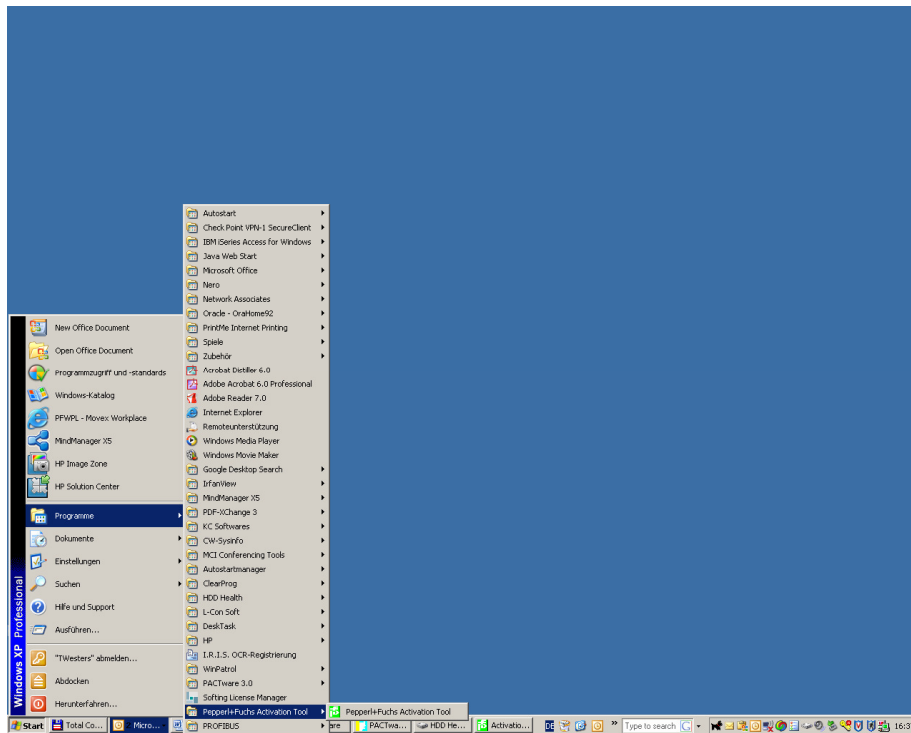


Confirm by clicking to **Quit** to finish the installation of the DTM-Collection Conventional Interface.

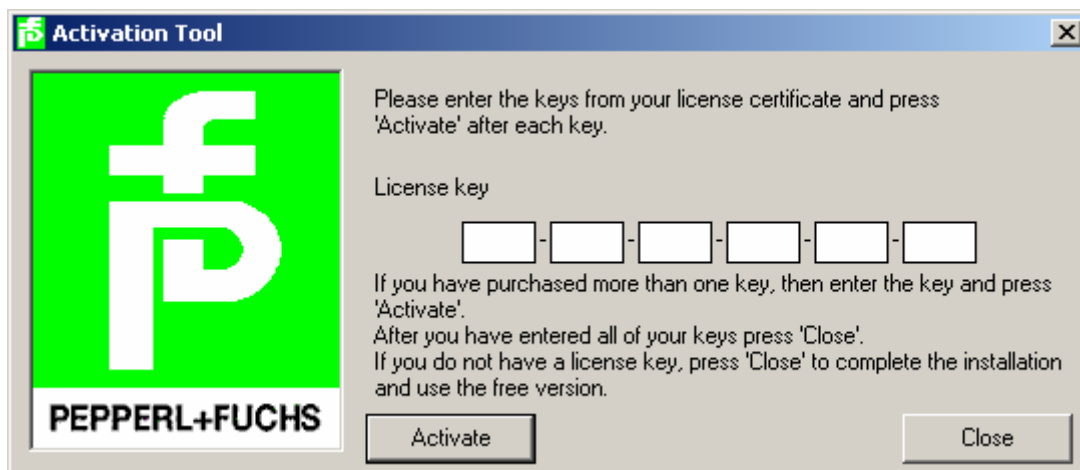


Licensing of DTM-Collections

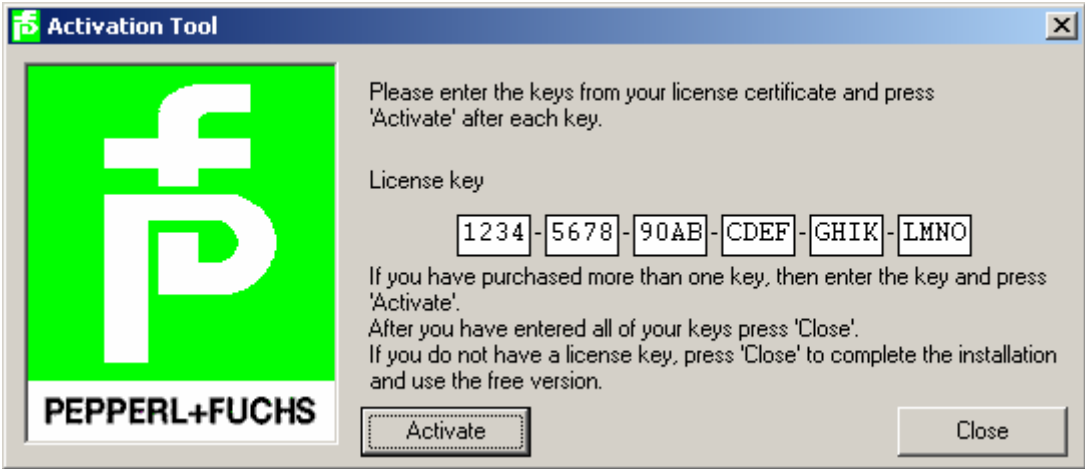
Start the “Licence Activation Tool” via the Windows task bar.



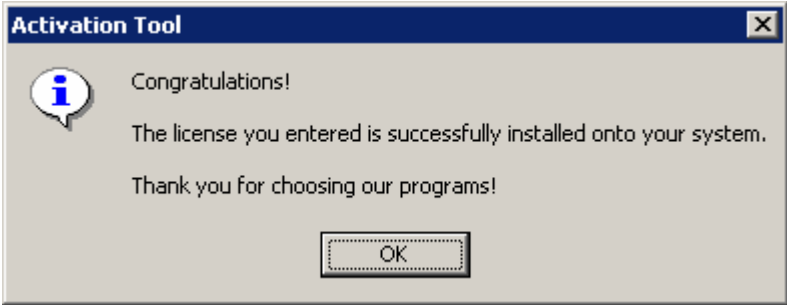
A window to enter your licence code appears.



Enter your licence code and confirm by clicking to **Activate**.



Confirm by clicking to **OK** when the licence was successfully installed.



The licence activation of further DTMs can be done in the same way at any time.