

AS-INTERFACE G11 MODULES

INNOVATIVE, VERSATILE, ROBUST



DURABLE HOUSING FOR HARSH CONDITIONS

The field modules offer an innovative sealing concept in a robust, compact, circular design and are particularly suitable for machine engineering and process technology applications. Cleaning processes involving steam cleaners and high mechanical stresses do not affect the performance of G11 modules. You can connect sensors and actuators to an AS-Interface quickly and easily, even under these harsh ambient conditions.



NO MORE TROUBLESHOOTING!

In the event of a short circuit at the output, not only is the fault transferred to the controller, but a red LED directly at the relevant M12 port indicates the presence of a fault.



MAXIMUM PROTECTION

The device is mounted using two screws in the base and a central stainless steel screw in the top. Durable materials protect the electronics.



FITS INTO EVERY CORNER

The compact, circular design allows the free alignment of the flat cable to any position.



STEAM CLEANING NEVER POSES A PROBLEM

Radial O-ring seals provide the electronics with hermetic protection without requiring encapsulated components. Aging and thermal loading are not a concern.

ONE PRODUCT – FOUR VERSIONS

The G11 module is available in four versions with different types of connection and varying numbers of inputs and outputs.

CUSTOMER BENEFITS

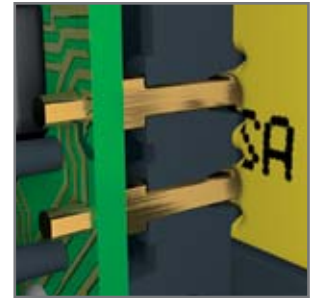
- Highest degree of protection IP68 / IP69k, encapsulated components not required
- Smooth surface prevents accumulation of dirt
- Flat cable aligned to any position
- Compact design
- Output overload indicator at M12 port
- Outputs with high current load rating
- Compatible with "AS-Interface POWER24"



Versions with M12 connection for AS-i/AUX are available

FLAT CABLE WITH SECURE SEALED CONTACTS

When the flat cable is connected, the exceptionally effective sealing technology – proven everyday in our line of passive splitters – seals off the round gold-plated piercing pins with maximum effect.



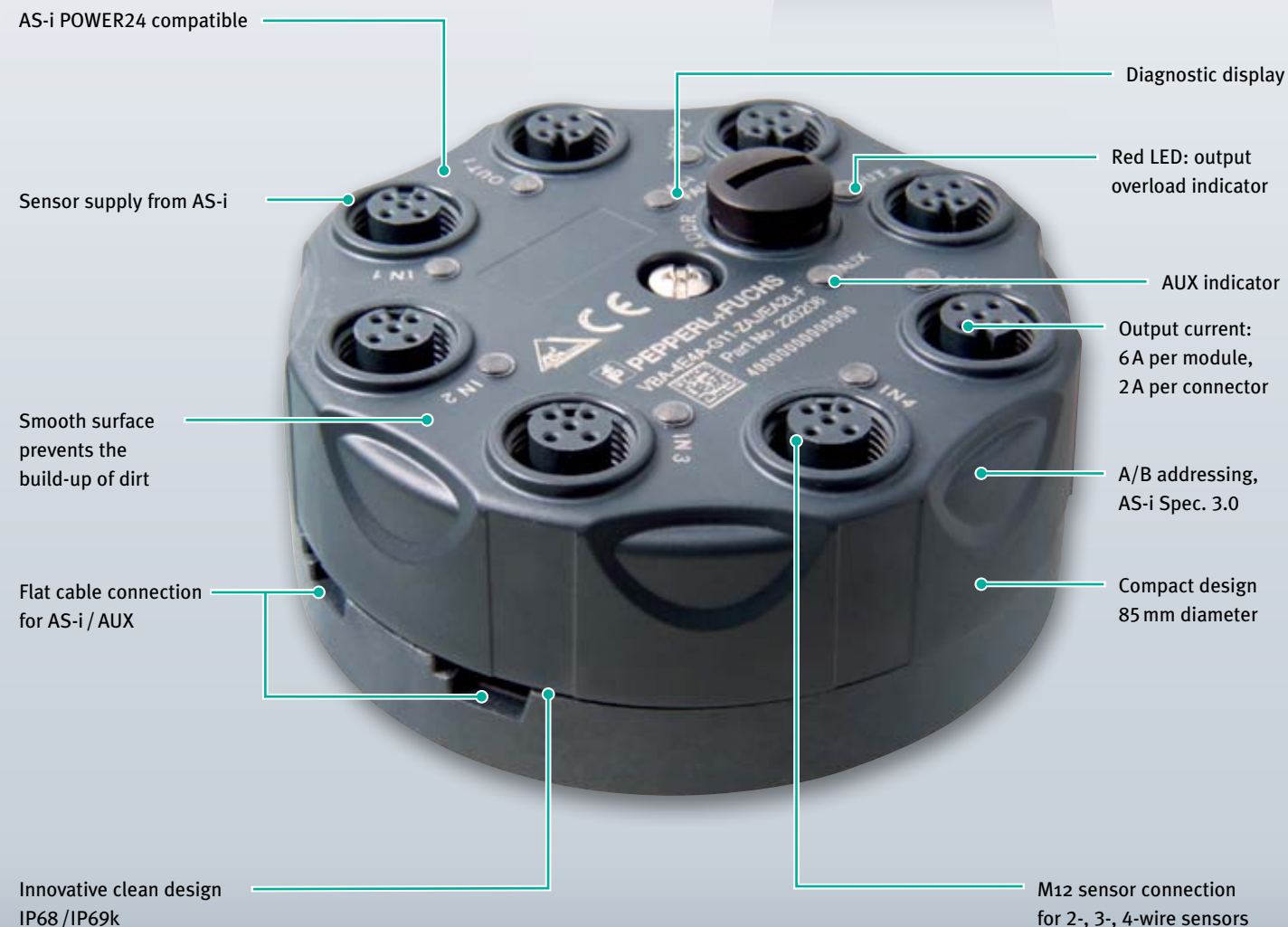
FLEXIBLE FLAT CABLE ROUTING

The M12 connection for AS-i/AUX allows offset installation from the flat cable.



OPERATED WITH STANDARD 24 V POWER SUPPLY

The G11 module already conforms to the new AS-Interface POWER24 specifications.



THE NEW AS-INTERFACE G11 MODULES

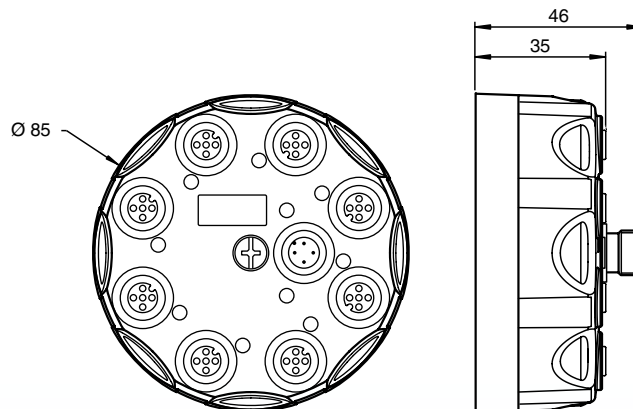
TECHNICAL DATA AND PRODUCT SELECTION

ELECTRICAL DATA

Output current per module	max. 6 A
Output current per M12 port	max. 2 A
Overload indicator at M12 port	red LED
Lead breakage detection for outputs	configurable
AS-Interface/AUX connection	M12 or flat cable
Operating voltage	18.5 V ... 30.5 V
AS-Interface POWER24	compatible
AS-Interface specification	3.0

MECHANICAL DATA

Degree of protection	IP68/IP69k
Materials used	PBT, stainless steel
Shock loading	30 g
Temperature range	-25 °C ... +70 °C



MODEL NUMBER	DESCRIPTION OF AS-INTERFACE G11 MODULE
VBA-4E-G11-ZAJ-F	4 inputs, flat cable connection for AS-Interface
VBA-4E4A-G11-ZAJ/EA2L-F	4 inputs and 4 outputs, flat cable connection for AS-Interface/AUX
VBA-4E-G11-ZAJ-V1	4 inputs, M12 connection for AS-Interface
VBA-4E4A-G11-ZAJ/EA2L-V1	4 inputs and 4 outputs, M12 connection for AS-Interface/AUX

For more information on our AS-Interface G11 modules, visit:

www.pepperl-fuchs.com/g11

Contact

Pepperl+Fuchs Inc.
1600 Enterprise Parkway
Twinsburg, Ohio 44087 · USA
Tel. +1 330 486-0001 · Fax +1 330 405-4710
E-mail: fa-info@us.pepperl-fuchs.com

Worldwide Headquarters

Pepperl+Fuchs GmbH · Mannheim · Germany
E-mail: fa-info@de.pepperl-fuchs.com

USA Headquarters

Pepperl+Fuchs Inc. · Twinsburg · USA
E-mail: fa-info@us.pepperl-fuchs.com

Asia Pacific Headquarters

Pepperl+Fuchs Pte Ltd · Singapore
Company Registration no. 199003130E
E-mail: fa-info@sg.pepperl-fuchs.com

www.pepperl-fuchs.com

 **PEPPERL+FUCHS**
SENSING YOUR NEEDS