

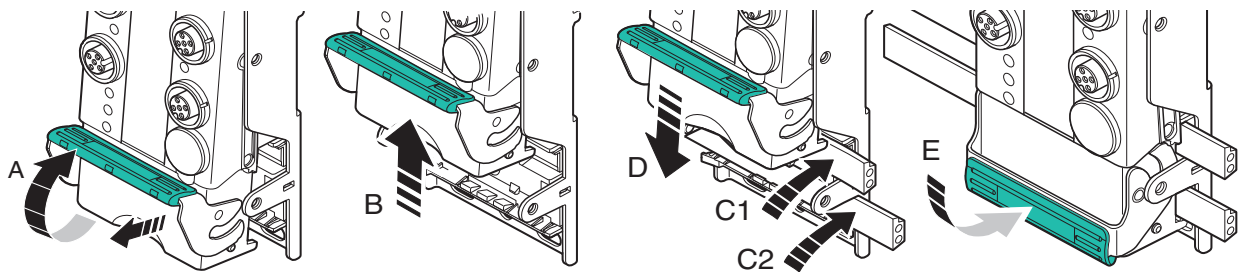
**Installation with mounting screws**

- Frontally screw the module tightly down onto a flat surface by using mounting screws.
- Close unused connections with a protection cap.

**Installation on a mounting rail**

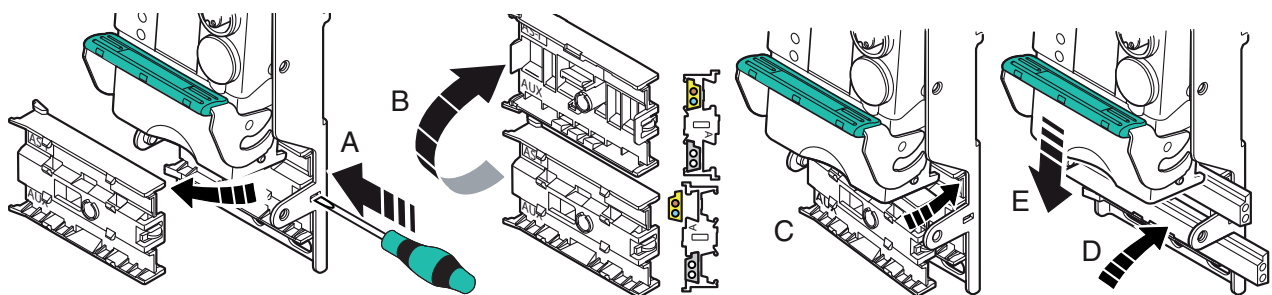
- Slide the module with the recess to the desired position on the mounting rail.
- Snap the module onto the rail by pressing on the housing.
- Close unused connections with a protection cap.

**Connecting voltage supply and AS-Interface**



- Open the module by releasing the locking latch (A). Subsequently push the electronics of the module, until you hear it engage (B).
- Insert the yellow flat cable for the bus into the cable feed guide labelled AS-Interface (C1).
- Insert the black flat cable for the auxilliary power into the cable feed guide labelled AUX (C2).
- Close the module by pushing the electronics of the module back to the starting position in the shown direction, until you hear it engage (D). Then close the locking latch (E).
- When the locking latch is snapped into place, the module is connected to the AS-Interface flat cable(s) via the cable piercing method.

**Changing of the orientation of the cables**



- Remove the cable feed guide from the opened module (A) with a screwdriver and turn it around (B).
- Reinsert the cable feed guide into the module (C).
- Insert the corresponding flat cable into the cable feed guide (D).
- Close the module by pushing the electronics of the module back to the starting position in the shown direction, until you hear it engage (D). Then close the locking latch (E).

Release date: releasedate Date of issue: datum tdoct-1952\_eng