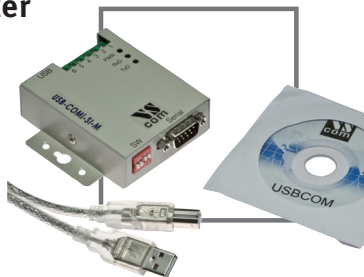


## Quick Start Guide

# PCV-USB-RS485-Converter



CE



1	Description .....	3
2	Intended Use .....	3
3	Scope of delivery .....	3
4	Configuration .....	3
5	Connecting the reading head PCV80-F200-R4-....	9

## Used symbols



*This symbol warns the user of potential danger. Nonobservance may lead to personal injury or death and/or damage to property.*

**Warning**



*This symbol warns the user of potential device failure. Nonobservance may lead to the complete failure of the device or other devices connected.*

**Attention**



*This symbol calls attention to important notes.*

**Note**

## Security advice



*This product must not be used in applications, where safety of persons depend on the correct device function. This product is not a safety device according to EC machinery directive.*

**Warning**

## Notes

These operating instructions refer to proper and intended use of this product. They must be read and observed by all persons making use of this product. This product is only able to fulfill the tasks for which it is designed if it is used in accordance with specifications of Pepperl+Fuchs.

The warranty offered by Pepperl+Fuchs for this product is null and void if the product is not used in accordance with the specifications of Pepperl+Fuchs.

Changes to the devices or components and the use of defective or incomplete devices or components are not permitted. Repairs to devices or components may only be performed by Pepperl+Fuchs or authorized work shops. These work shops are responsible for acquiring the latest technical information about Pepperl+Fuchs devices and components. Repair tasks made on the product that are not performed by Pepperl+Fuchs are not subject to influence on the part of Pepperl+Fuchs. Our liability is thus limited to repair tasks that are performed by Pepperl+Fuchs.

The preceding information does not change information regarding warranty and liability in the terms and conditions of sale and delivery of Pepperl+Fuchs.

This device contains sub-assemblies that are electrostatically sensitive. Only qualified specialists may open the device to perform maintenance and repair tasks. Touching the components without protection involves the risk of dangerous electrostatic discharge, and must be avoided. Destruction of basic components caused by an electrostatic discharge voids the warranty!

Subject to technical modifications.

Pepperl+Fuchs GmbH in D-68301 Mannheim maintains a quality assurance system certified according to ISO 9001.



## 1 Description

This Quick Start Guide is not a complete function description of the interface converter PCV-USB-RS485-Converter. The intention of this document is to give you a step by step instruction for commissioning of this interface under MS-Windows XP.

## 2 Intended Use

The PCV-USB-RS485-Converter Set is an interface converter which enables the configuration of devices with RS485 interface or RS422 interface over a standard USB computer interface.

## 3 Scope of delivery

In the shipment you will find:

- Interface converter PCV-USB-RS485-Converter
- Power supply 110V/230V with cordset
- USB cable 0.8 m long
- CD with device driver and instruction manual

## 4 Configuration

For correct usage of the interface converter PCV-USB-RS485-Converter, at your personnel computer proceed as follows:

1. Set the position of the DIP-switches at the interface as shown below:

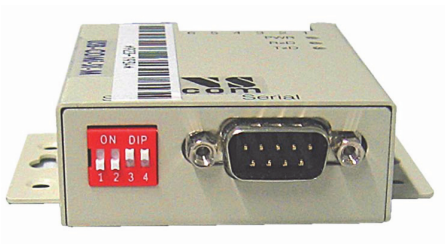
Switch 1:	OFF
Switch 2:	OFF
Switch 3:	ON
Switch 4:	ON



Note

Set the position of the DIP-switches at the interface as shown below for all interface converter from serial number **A000762**:

Switch 1:	ON
Switch 2:	OFF
Switch 3:	OFF
Switch 4:	OFF



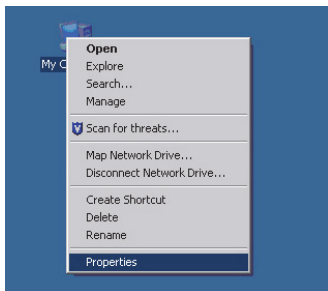
## Note

*Do not plug in the interface converter to your PC just yet!*

2. First, install the software from the enclosed CD. Restarting the system is not required.

USB to Serial Driver and Utility CD	
<p><b>Driver Installation</b></p> <p>You need to install the driver first, prior to hardware installation. Before you install the driver to your computer, do not connect the product to the USB port of your computer.</p> <p><u>Windows 7 , Vista , 2003, XP , 2000 Driver</u></p> <p><a href="#">Step by Step Instruction</a></p>	<p><b>Uninstalling Drivers</b></p> <p>Uninstalling Windows 2003/XP/2000 Drivers</p> <p><a href="#">Driver Uninstalling</a></p> <p><a href="#">Step by Step Instruction</a></p> <p>Uninstalling Windows 7 , Vista Drivers To remove driver in windows 7 , Vista, please refer to the steps below for windows 7 , Vista drivers uninstall.</p> <p><a href="#">Step by Step Instruction</a></p>
<p><b>USB PRO Series Hardware Configuration Utility</b></p> <p>Please activate the Configuration mode of the product by pressing the CONFIG button for two seconds until the blue light appears.</p> <p><a href="#">UsbComCfg</a></p> <p><a href="#">Step by Step Instruction</a></p>	<p><b>On-line Resources</b></p> <p>Here you can visit the driver pages of website to check for and download the latest driver release for this product.</p> <p><a href="#">Drivers Page</a></p>
<p><b>Hardware Setting</b></p> <p><a href="#">Hardware Setting &amp; Pin-outs</a></p>	<p><b>Specifications &amp; Features</b></p> <p><a href="#">Specifications &amp; Features</a></p>

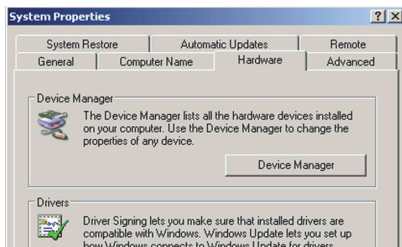
- Right click the My Computer icon and select the submenu *"Properties"*.



- Go now to the submenu *"Hardware"*.

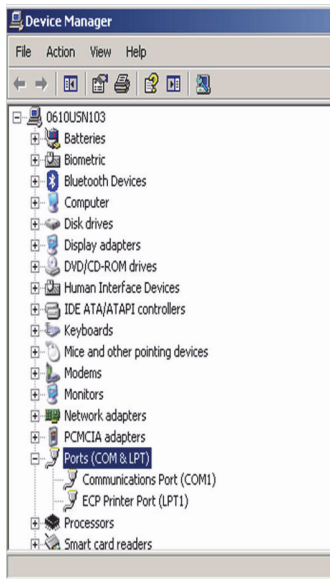


- Then select the submenu *"Device manager"*.



- Under "Device manager", go to "Ports (COM& LPT)".

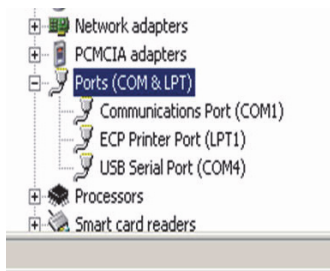
Click at the + symbol in front of "Ports (COM& LPT)" to show all presently available ports.



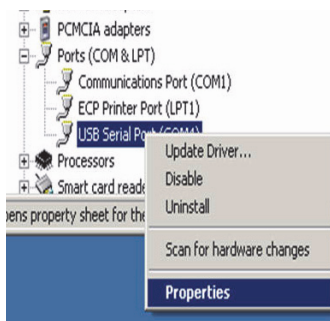
- Now plug the adapter into the computer using the USB cord. The red LED indicates the interface converters operation state.



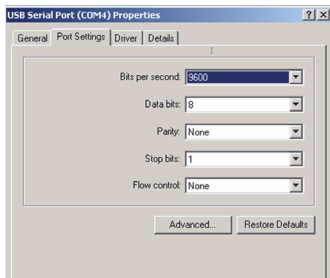
- Watch the ports listed. After a few seconds at the end of the list, a new entry will appear "USB Serial Port (COMxx)". In the screenshot nearby it is that USB Serial Port (COM4).



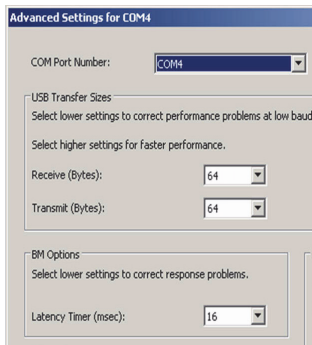
- Right click the new entry and select "Properties".



- With the properties tab of that USB Serial Port shown, click on the submenu "Port Settings". Click on the sub menu "Advanced".



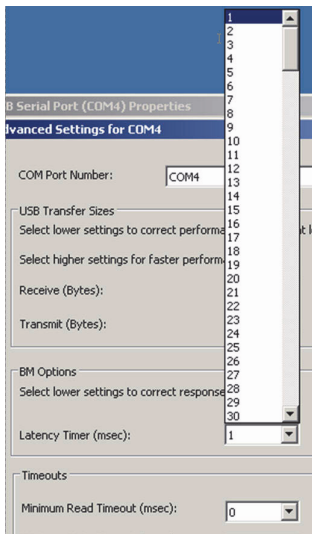
11. In that "Advance settings for COMxx" menue, set the value for "receiving (bytes)" as well as "transmit (bytes)" to the minimum (64).



12. Set the "Latency Time" to the minimum (1 ms).

13. Confirm the configuration with a click at "OK".

The necessary settings for the parameterization of type PCV...-R4-... photoelectric reading heads are done, now.



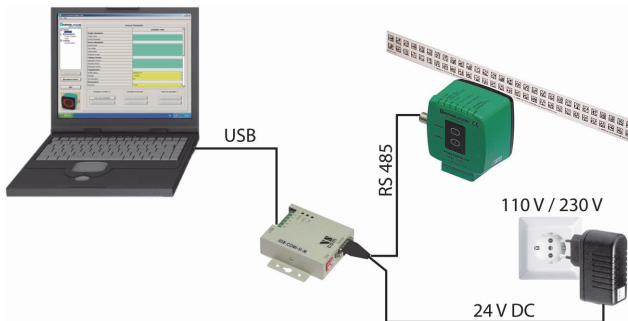
## 5 Connecting the reading head PCV80-F200-R4-...



Note

*If applicable, install the interface converter software in your PC system before connecting the components. Follow the instructions in the quick start guide to the interface converter when doing so.*

Establish the electrical connections as shown and plug the power supply into a socket.



Once the USB connection between the PC system and interface converter is established, the red PWR LED on the interface converter lights up.

Once the electrical connection to the Data Matrix reading head is established and the plug-in power supply is supplying the power, the red ring of light on the reading head lights up.

Make sure that the position of the DIP switches corresponds to the required settings.



# FACTORY AUTOMATION – SENSING YOUR NEEDS



## Worldwide Headquarters

Pepperl+Fuchs GmbH  
68307 Mannheim · Germany  
Tel. +49 621 776-0  
E-mail: [info@de.pepperl-fuchs.com](mailto:info@de.pepperl-fuchs.com)

## USA Headquarters

Pepperl+Fuchs Inc.  
Twinsburg, Ohio 44087 · USA  
Tel. +1 330 4253555  
E-mail: [sales@us.pepperl-fuchs.com](mailto:sales@us.pepperl-fuchs.com)

## Asia Pacific Headquarters

Pepperl+Fuchs Pte Ltd.  
Company Registration No. 199003130E  
Singapore 139942  
Tel. +65 67799091  
E-mail: [sales@sg.pepperl-fuchs.com](mailto:sales@sg.pepperl-fuchs.com)

[www.pepperl-fuchs.com](http://www.pepperl-fuchs.com)

 **PEPPERL+FUCHS**  
SENSING YOUR NEEDS

Subject to modifications  
Copyright PEPPERL+FUCHS • Printed in Germany

DOCT-2116B  
2018-06