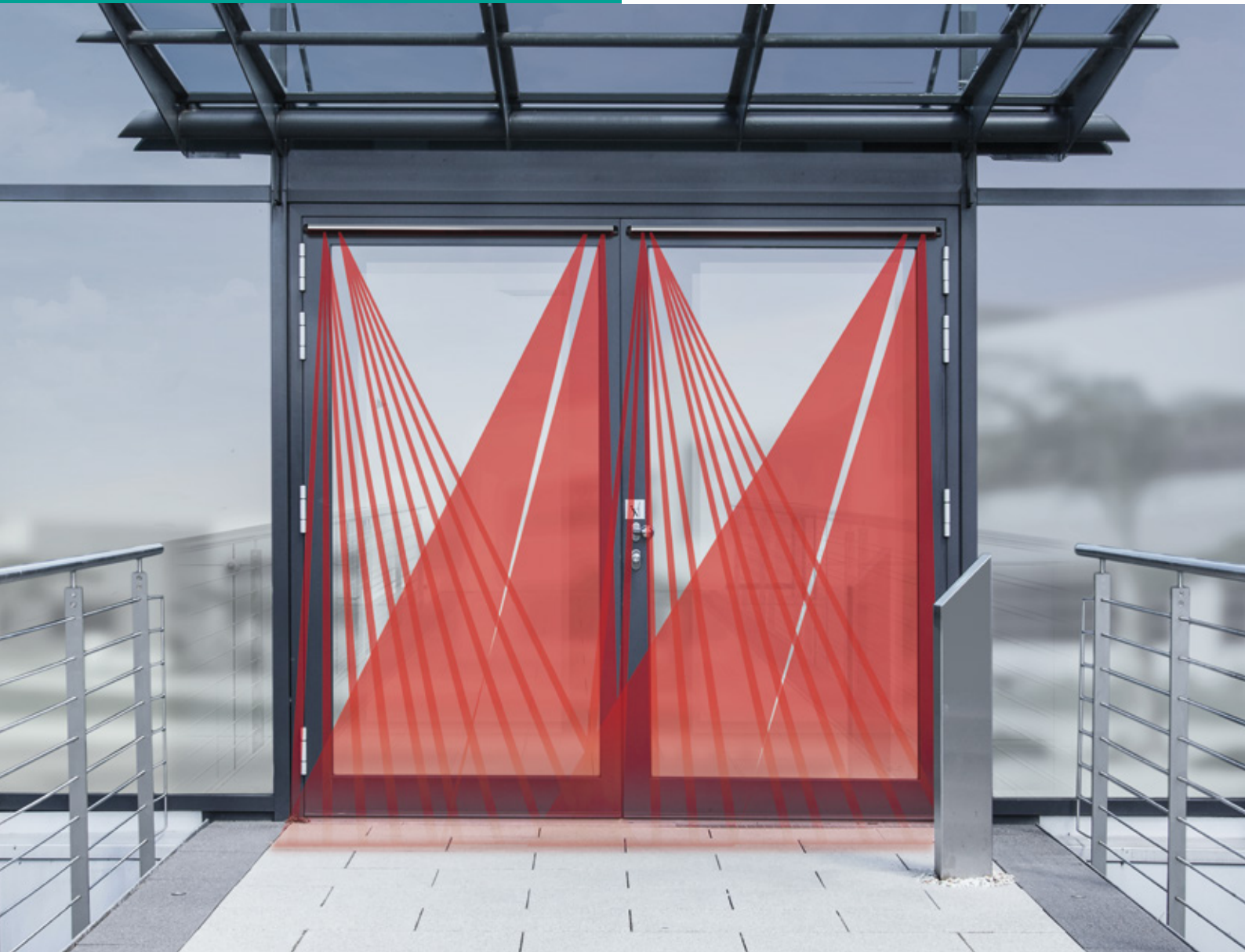


**Opening opportunities.
Increasing safety.
Simplifying setup.**

DoorScan®

Presence Sensor for
Automatic Doors



Your automation, our passion.

 **PEPPERL+FUCHS**

DoorScan®

Uncompromisingly Safe and Remarkably User- Friendly: DoorScan from Pepperl+Fuchs

Automatic doors are an integral part of modern buildings. Sensor solutions for these doors must meet demanding requirements. DoorScan sets the standard, combining maximum safety with effortless installation so you can open up endless application possibilities.

Safety That Sets the Standard

DoorScan is a presence sensor that scans the areas directly in front of and behind doors to keep people and objects from colliding with them. The universal system ensures reliable detection in any situation due to intelligent wall suppression that functions even when doors are fully open. The convenient snap-in mechanism enables modules to be mounted quickly and without any tools, and the system is taught by simply pressing the Teach button. The sensor solution is certified in accordance with DIN 18650 and complies with European standard EN 16005.

DoorScan by Pepperl+Fuchs works using active infrared with background evaluation and is suitable for operation in both stationary and mobile environments. The sensor forms a continuous rectangular detection field on each side of the door. If a person or object breaks one or more of the protective light beams near the door, the door stops moving immediately, guaranteeing collision protection at all times.



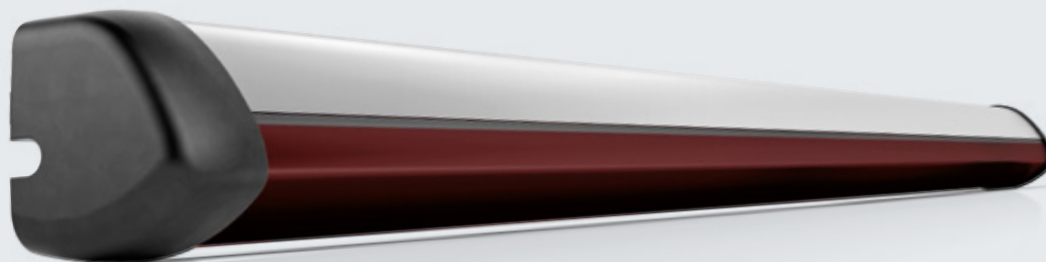


In accordance with
EN16005



Perfectly Combined: Maximum Collision Prevention and Excellent Flexibility

When using automatic doors, safety is the top priority. DoorScan from Pepperl+Fuchs offers the highest possible level of safety and dependable collision prevention—anytime and anywhere.



An Exceptional Level of Protection for Closing Doors (1)

To ensure the safe operation of automatic doors, it is crucial for people and objects to be detected quickly and reliably when they approach the edge of a closing door. The position of the outer beams enables DoorScan to offer increased safety at the main and secondary closing edges and protects people and objects from colliding with the door.

Collision Protection Until Doors are Fully Open (2)

Intelligent wall suppression allows DoorScan to provide complete protection up to the wall without sensor shutoff. The wall is automatically taught in at the touch of a button during setup, ensuring collision protection up to and including when a door is completely open.

Maximum Flexibility due to Adjustable Protection Field (3)

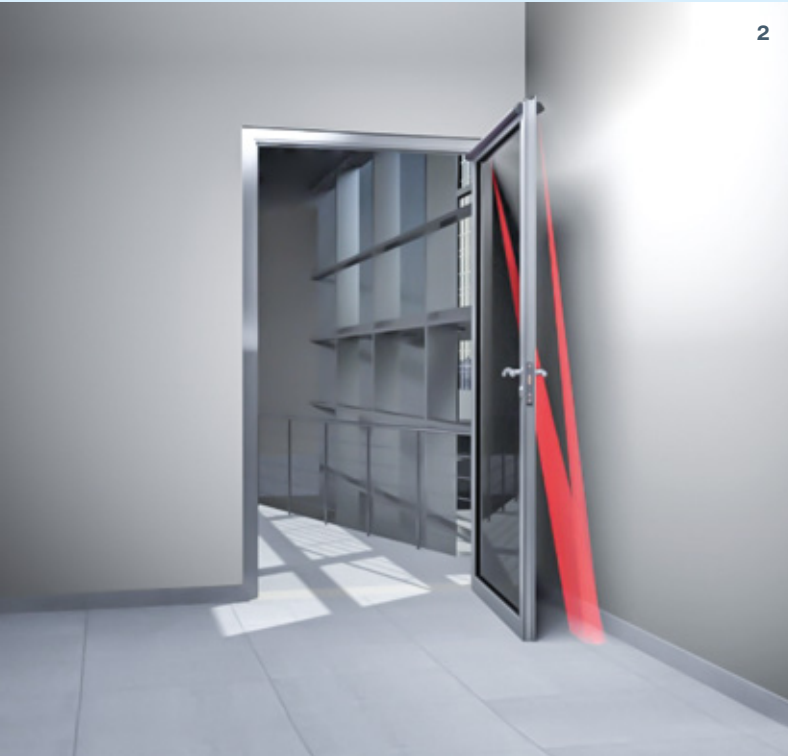
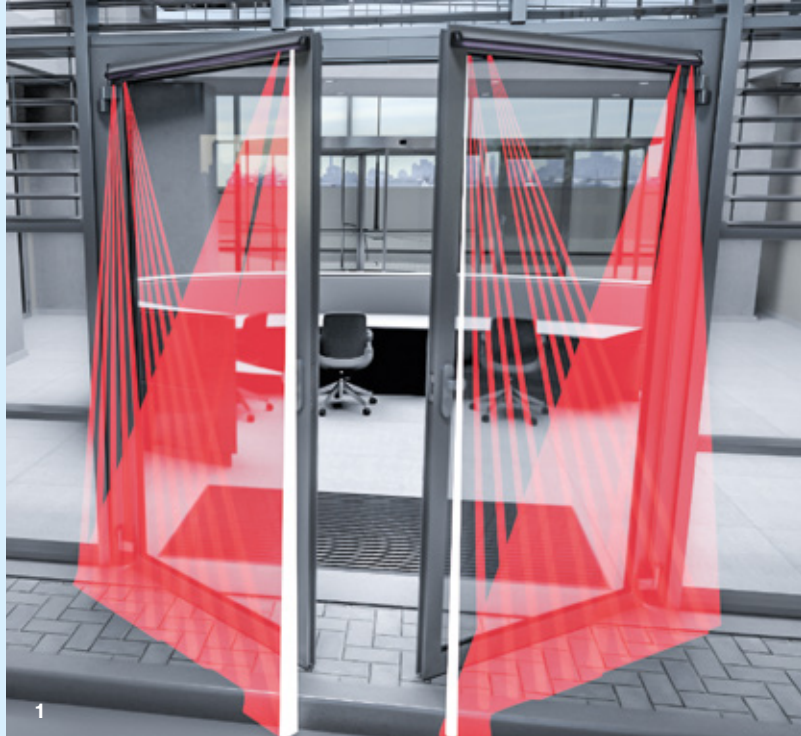
When unlocked, the DoorScan modules can be moved freely in the sensing strip. The width of the detection field increases or decreases depending on the distance between the transmitter and receiver modules. This expanded sensing area enables precise adaptation to various door widths and therefore maximum flexibility when using DoorScan.

Compatible with Any Door Controller

The latest version of DoorScan is equipped with one NPN output and one PNP output and can be used with any controller. Adjusting the switching mode is easy via the plug-in jumper. With its slim profile, DoorScan is an attractive addition to any door design.

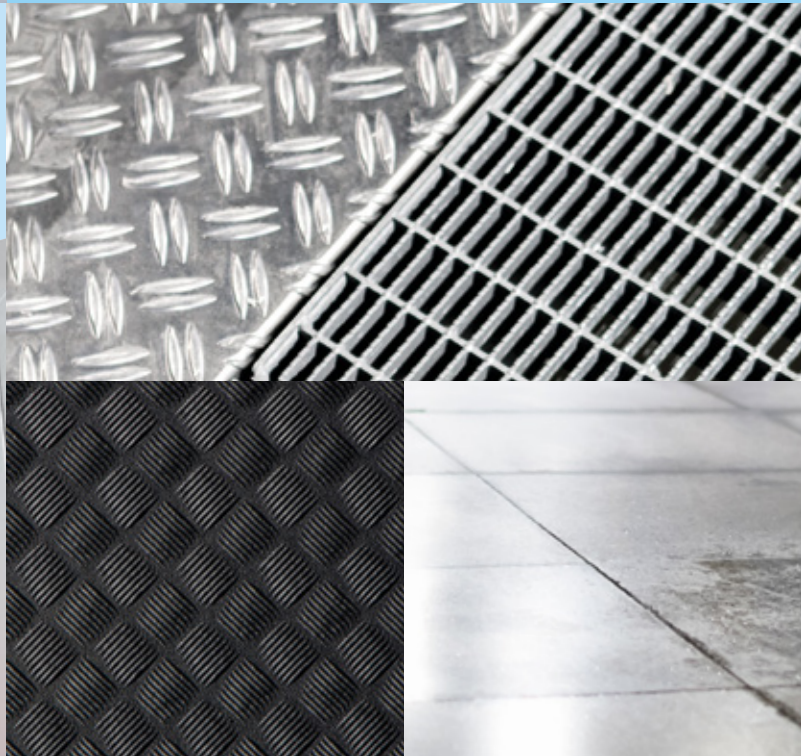
Reliable Operation in Any Environment

Reflective walls, dark mats, shiny stone slabs, or grids in front of the doors—there are a number of challenges for presence sensors to contend with in day-to-day operation. In spite of these challenges, DoorScan always functions reliably. With the new advanced GRID mode, DoorScan has no problems whatsoever with even the most challenging surroundings such as grid bridges.



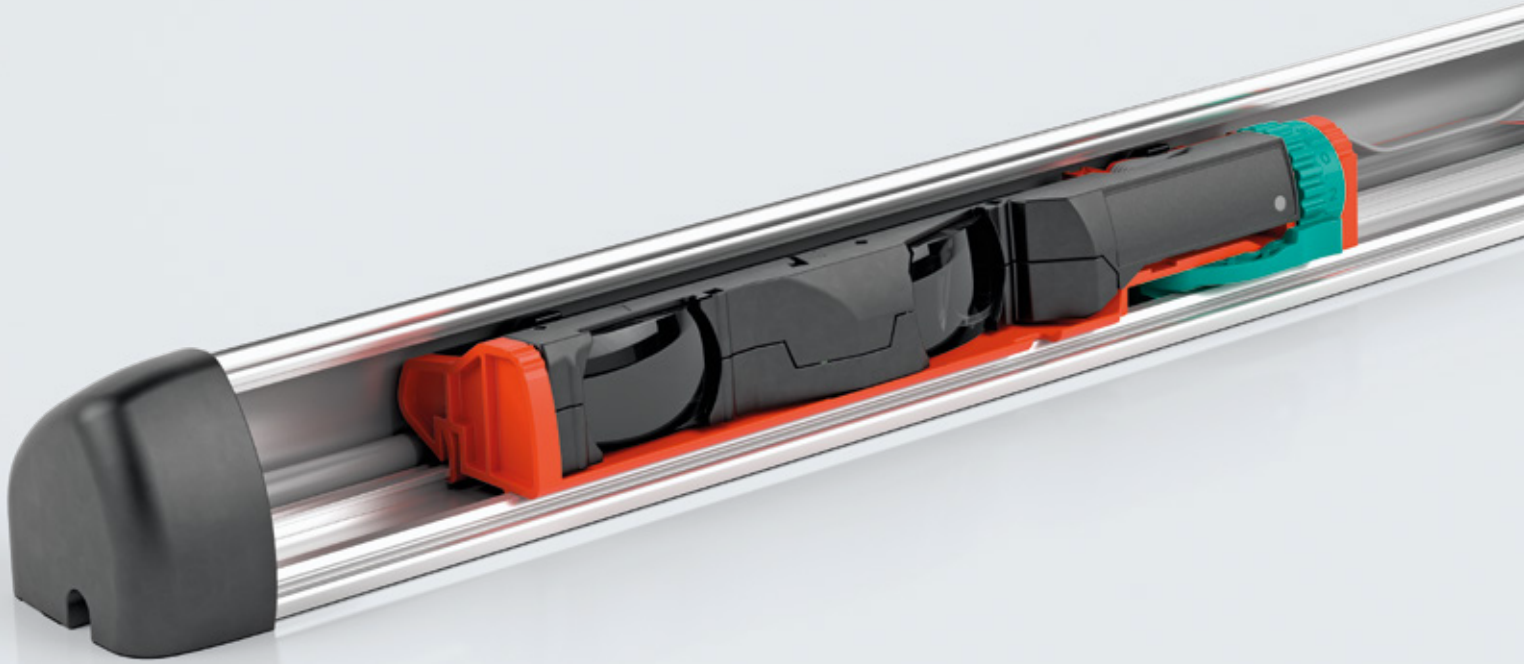
Highlights

- Intelligent wall suppression provides complete protection up to the wall without sensor shutoff
- The position of the outer beams provides improved collision protection at the closing edges
- Reliable operation in any environment leads to unlimited application possibilities
- Freely moving transmitter and receiver modules provide a flexible, adjustable protection field



Installation—Simple and Highly Efficient

Fast, tool-free installation and commissioning via the teach button. The DoorScan installation is characterized by simple handling and takes very little time.



DoorScan: transmitter, interface, and receiver module

Time-Saving Setup

DoorScan setup is quick and easy with the multifunction interface module, which supplies and monitors the sensor components on both sides of the door. Simply pressing the Teach button starts the automatic teach-in function. Challenging installation situations such as protruding door jambs are no problem whatsoever for DoorScan, since the higher outer beams can be switched off easily using the DIP switches. The integrated wall suppression function can also be switched off, speeding up teach-in time when no wall is present.

Unique Color-Coding System

All DoorScan parts can be identified by the specific color of their housing: red designates transmitter modules, blue designates receiver modules, and green designates the interface module. This saves time during installation. Because all of the connection cables are preassembled with plug-in terminals, you can connect the system quickly and without tools.

Fast, Tool-Free Mounting with Snap-In Modules

Modules can be attached to the sensor strip via a snap-in mechanism and are locked into place using the module lever—a simple process that does not require any tools. When unlocked, the modules can be moved as required to adjust the detection field to different door widths. These features result in an efficient, time-saving installation.



Technical data

DoorScan

Mounting height	3,500 mm (upright CA test body)
Operating voltage	24 V DC \pm 20 %
Signal output	Switchable NPN or PNP outputs, short-circuit proof
Safety integrity level	SIL 2
Performance level	PL d
Ambient temperature	-30 °C ... 60 °C (-22 °F ... 140 °F)
Degree of protection	IP54
Standards	EN 16005 EN 61508-1:2010 DIN 18650-1:2010 Chapter 5.7.4 BS 7036-1:1996 Chapter 7.3.2 BS 7036-2:1996 Chapter 8.1

Accessories

Weather protective cover	DoorScan Weather Cap L1200 DoorScan Weather Cap L1600
Connecting cable	DoorScan Transfer Loop DoorScan Connection Cable 5p DoorScan Cable BS/BGS
Additional sensor modules for customized configurations	DoorScan-R DoorScan-T DoorScan-I DoorScan Relay Modul
End cap sets	DoorScan End Caps
Sensor profiles	DoorScan Profile L3000 5pcs DoorScan Cover L3000 5pcs
Adapter module for customized configurations	DoorScan Adapter DoorScan Cable Adapter

Your automation, our passion.

- Industrial Sensors
- Industrial Communication and Interfaces
- Enterprise Mobility
- Hazardous Area Products and Solutions

www.pepperl-fuchs.com

Subject to modifications • © Pepperl+Fuchs
Printed in Germany • Part. No. 70186973 10/24 • public



Pepperl+Fuchs Quality

Download our latest policy here:

www.pepperl-fuchs.com/quality