

Global Environmental and Energy Policy at Pepperl+Fuchs Group

Our Responsibility



Your automation, our passion.

Our Responsibility

Pepperl+Fuchs is an internationally active group in the automation industry. Our business model comprises the development and manufacturing of products for electrical explosion protection and industrial sensor technology. These technologies are our contribution to a sustainable future. We are aware of our responsibility for the environment and for future generations.

Environmental protection has always been a key topic for the Pepperl+Fuchs Group and has become an even more important part of our corporate strategy in the wake of climate change and increasing resource scarcity. We consider environmental and energy management to be a fundamental part of our sustainability management, which supports the United Nations Sustainable Development Goals (SDGs). Within the scope of our economic and technical capabilities, we avoid environmental impact as much as possible, minimize unavoidable environmental effects, and reduce our energy consumption. In addition, our products help our customers to work in a way that better conserves resources and is therefore more environmentally friendly.

In our Code of Conduct, we commit to always acting in accordance with the relevant laws, regulations, and international standards for environmental protection and increasing energy efficiency. We consistently monitor how our activities impact the environment and the energy consumption caused by our activities, and always fulfill our binding obligations arising from legal requirements and requirements of interested parties.

This environmental and energy policy applies to the entire Pepperl+Fuchs Group, its employees and management, taking into account local conditions and legislation. Our largest production sites, which are spread across Europe, Asia, and America, are certified according to DIN EN ISO 14001. These sites maintain independent environmental management systems that meet both our internal environmental requirements and the corresponding country and site-specific environmental regulations. In addition, the Pepperl+Fuchs SE sites operate an energy management system according to DIN EN ISO 50001. Energy management is controlled by our headquarters in Mannheim.

Our Strategic Objectives in the Environmental Field and Energy Sector

Our aim is to keep the environmental impact and energy consumption of our business activities to a minimum. We strive to keep our consumption of resources low and make our operations environmentally friendly. With our product innovations and forward-looking solutions, we aim to contribute to the conservation of resources in business and society.

Products for Environmental Protection and Increasing Energy Efficiency

The automation and digitalization of production processes make an important contribution to promoting environmental protection and increasing energy efficiency in industry. We view digital representation and transparency of processes as essential components of a more sustainable future. Pepperl+Fuchs offers a range of different products and solutions for use in factory automation, for example, those that provide detection and identification of goods and product parts, or others that record and transfer a variety of data. Our products make it possible to automate manual processes; furthermore, they can also be made more efficient. An excellent example of this is in wind and solar power plants, where our products can contribute to a higher energy yield. In addition to industrial sensor technology, Pepperl+Fuchs offers an extensive portfolio of products for electrical explosion protection, which ensure the safety of plants and processes, thereby minimizing risks to people and the environment.

Environmental Management System According to DIN EN ISO 14001

The primary objective of our environmental management system is to continuously improve our environmental performance, and to monitor its implementation by establishing specific metrics and objectives.

The following strategies outline the actions and approaches we will take to meet our environmental objectives:

Research and Development



- Designing products that are as durable as possible
- Complying with applicable regulations and standards
- Ensuring that products have low energy consumption

Packaging



- Minimizing energy and material consumption while ensuring product protection
- Increasing the use of environmentally friendly product packaging

Waste



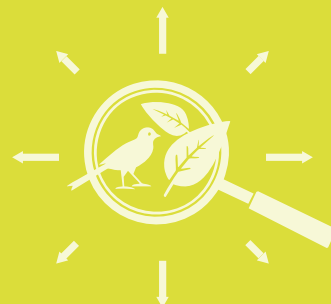
- Preventing waste
- Active monitoring and objective-oriented improvement of waste separation

Water



- Continuous monitoring of water consumption
- Keeping water consumption and use of process water constantly low

Biodiversity



- Reviewing global locations with regard to biodiversity
- Developing a biodiversity strategy

Production



- Low-energy production processes with low emissions
- Improving and developing production processes to conserve resources

Supply Chains



- Applying appropriate environmental standards and management systems
- Complying with regulations for handling of hazardous substances

Energy Efficiency



- Monitoring and continuously reducing energy consumption
- Site-specific testing of self-sufficient energy supply

Climate



- Ongoing monitoring and control of our greenhouse gas (GHG) emissions for the Pepperl+Fuchs Group
- Reducing our greenhouse gas emissions
- Conversion to green electricity for the entire Pepperl+Fuchs Group
- Developing and implementing a climate strategy

Infrastructure



- Increasing the energy efficiency of buildings and facilities by continuously modernizing them within our own infrastructure

Emergency Management



- Ensuring safety in our facilities
- Exercises, reviews, and ongoing revision of emergency preparedness and response processes

Energy Management System According to DIN EN ISO 50001

The primary objective of our energy management system at the Pepperl+Fuchs SE sites is to continuously improve our energy efficiency, and to monitor the success of our energy targets.

The following measures form the framework for our approach to energy management:

Systematic Monitoring of Energy Flows



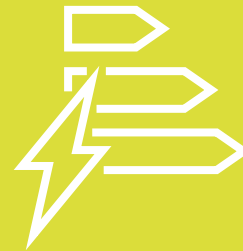
- Monitoring of all significant consumers
- Continuous broadening of data collection
- Detailed monitoring of all energy flows in the long term

Assessment of Energy Efficiency



- Relation of the monitored energy flows to relevant influences
- Derivation of key figures for evaluating energy efficiency

Energy Targets



- Setting energy targets for energy efficiency
- Deriving measures to achieve the energy targets

Continuous Improvement



- Consideration of energy efficiency in new buildings and reconstructions
- Consideration in design and procurement
- Consideration in the development of new products

Establishing Environmental Protection and Energy Management in the Company

In addition to the board's commitment to environmental protection and increasing energy efficiency, our employees are the driving force in the implementation of our environmental and energy objectives. This is why our priority in the future will increasingly focus on working with our employees to direct their attention to environmental and climate-relevant issues, our environmental protection as a company, our energy consumption, and sustainable development in general.

This is because the only way we can all make a joint contribution to the effectiveness of the environmental management system and the energy management system is if all employees are aware of the environmental impacts and energy consumption that result from our daily business processes. A corresponding training program and internal communications that convey knowledge about environmental protection, energy-related performance, and energy efficiency are therefore available to all employees of the Pepperl+Fuchs Group. At the same time, our managers have the responsibility of discussing internal environmental and energy objectives and supporting their employees in implementing the corresponding measures. Managers must ensure that our environmental and energy policy is communicated, understood, and ultimately implemented.

In compliance with social and economic requirements, we provide the resources for defining and achieving our environmental and energy objectives, while also fulfilling our obligation to monitor the effectiveness of our environmental and energy management system. By doing this—with the help of our innovative technologies—we aim to have a positive impact on the environment and therefore fulfill our responsibility to create a more sustainable future. We regularly review this environmental and energy policy and communicate any changes to all interested parties.

Mannheim, Germany, Dezember 20, 2024



Dr. Gunther Kegel



Werner Guthier



Lutz Liebers



Reiner Müller



Florian Ochs

Your automation, our passion.

- Industrial Sensors
- Industrial Communication and Interfaces
- Enterprise Mobility
- Hazardous Area Products and Solutions

www.pepperl-fuchs.com

Subject to modifications • © Pepperl+Fuchs

Printed in Germany • EDM No. TDOCT-5902DENG 12/24 • public



Pepperl+Fuchs Quality

Download our latest policy here:

www.pepperl-fuchs.com/quality