

MANUAL

Viator® USB HART Interface HM-MT-USB-010031



With regard to the supply of products, the current issue of the following document is applicable: The General Terms of Delivery for Products and Services of the Electrical Industry, published by the Central Association of the Electrical Industry (Zentralverband Elektrotechnik und Elektroindustrie (ZVEI) e.V.) in its most recent version as well as the supplementary clause: "Expanded reservation of proprietorship."

Viator® USB HART Interface Manual

Contents

1.0	Safety	5
1.1	Introduction	5
1.1.1	Contents	5
1.1.2	Target Group, Personnel	5
1.1.3	Symbols Used	6
1.1.4	Pertinent Laws, Standards, Directives, and Further Documentation	6
1.1.5	Declaration of Conformity.....	6
2.0	Overview	7
3.0	Directive Conformity.....	8
4.0	Technical Specifications	8
4.1	USB Pin Connections.....	8
5.0	Getting Started	9
5.1	Hardware and Software Requirements	9
5.2	Check your Viator USB HART Interface Package	9
5.3	Connecting to a HART Field Device.....	10
5.3	Standby and Hibernate Power Saving Modes.....	10
6.0	Installing Viator Utilities and Drivers	11
7.0	ViatorCheckBT™ Software Utility	14
7.1	Overview	14
7.2	Installing ViatorCheckBT	14
7.2.1	System Requirements for Use with Windows	14
7.2.2	Installation	14
7.2.3	Removing ViatorCheckBT	14
7.3	Using ViatorCheckBT	15
7.3.1	Active COM Ports List	16
7.3.1.1	Update Port List	16
7.3.1.2	Selecting a Port	16
7.3.1.3	HART COM Port.....	16
7.3.1.4	Port Wizard.....	17
7.3.2	HART Devices List	19
7.3.3	HART Device/Modem Information	19
7.3.4	HART Device Primary Variable Readings	22
7.3.5	Status Message Line	23
7.3.6	Exiting ViatorCheckBT	23

Viator® USB HART Interface Manual

7.4 Viator Serial Port Communication Filter 23

7.4.1 Overview 23

7.4.2 Installation 23

7.4.3 Using VSPCF 24

7.4.4 Message Log 25

7.4.5 HART Data Information Tabs 25

7.4.6 Application Port Data Log Window 25

7.4.7 Windows COM Port Data Log Window 25

7.4.8 Port and Message Settings Window 25

7.4.9 Viewing HART Data Activity 26

7.4.10 HART Communication Log 26

7.4.11 VSPCF Menu 27

7.4.12 Run at Startup..... 27

7.4.13 Delay Buffering 27

7.4.14 Closing VSPCF..... 27

8.0 Customer Registration Form..... 28

9.0 Limited Warranty 29

1 Safety

1.1 Introduction

1.1.1 Contents

This document contains information that you need in order to use your product throughout the applicable stages of the product life cycle. These can include the following:

- Product identification
- Delivery, transport, and storage
- Mounting and installation
- Commissioning and operation
- Maintenance and repair
- Troubleshooting
- Dismounting
- Disposal



Warning!

Failure to follow these instructions may impair the safety protection and function of the equipment.



Note!

For complete information on the product, refer to the instruction manual and further documentation at www.pepperl-fuchs.com.

The documentation consists of the following parts:

- Present document
- Instruction manual
- Datasheet

Additionally, the following parts may belong to the documentation, if applicable:

- EU declaration of conformity
- Certificates
- Control drawings
- Additional documents

1.1.2 Target Group, Personnel

Responsibility for planning, assembly, commissioning, operation, maintenance, and dismounting lies with the plant operator. In accordance with but not limited to IEC/EN 60079-14, only appropriately trained and qualified personnel may carry out mounting, installation, commissioning, operation, maintenance, and dismounting of the product. National laws and regulations must be observed and take precedence over any aspects of IEC/EN 60079-14. The personnel must have read and understood the instruction manual and any further documentation.

Viator® USB HART Interface Manual

1.1.3 Symbols Used

This document contains symbols for the identification of warning messages and of informative messages.

Warning Messages

You will find warning messages in instances where danger may arise from your actions. You must observe these warning messages for your personal safety and in order to avoid property damage. Depending on the risk level, the warning messages are displayed in descending order as follows:



Danger!

This symbol indicates an imminent danger.
Non-observance will result in personal injury or death.



Warning!

This symbol indicates a possible fault or danger.
Non-observance may cause personal injury or serious property damage.



Caution!

This symbol indicates a possible fault.
Non-observance could interrupt the device and any connected systems and plants, or result in their complete failure

Informative Symbols



Note!

This symbol brings important information to your attention.



Action

This symbol indicates a paragraph with instructions. You are prompted to perform an action or a sequence of actions.

1.1.4 Pertinent Laws, Standards, Directives, and Further Documentation

Laws, standards, or directives applicable to the intended use must be observed. In relation to hazardous areas, Directive 1999/92/EC must be observed.

The corresponding datasheets, EU Declaration of Conformity, EU Type Examination Certificates, and control drawings, if applicable (see datasheet), are an integral part of this document. You can find this information at www.pepperl-fuchs.com

Due to constant revisions, documentation is always subject to change. Please refer only to the most up-to-date version, which can be found at www.pepperl-fuchs.com.

1.1.5 Declaration of Conformity

All products were developed and manufactured under observance of the applicable European standards and guidelines.



Note!

A declaration of conformity is included with these instructions and can be requested from the manufacturer or obtained online at www.pepperl-fuchs.com.

Viator® USB HART Interface Manual

2 Overview

The Viator® USB HART Interface allows you to communicate with HART field devices using a personal computer, the computer's USB port, and HART communication software.

The interface operates on low power, is isolated, and is fully HART compliant. It draws power from the USB port and requires no external power supply. The interface operates on as little as 30 mA of USB-supplied power, well within the capabilities of all PCs. The interface adheres to the USB 2.0 standard. The Viator USB HART Interface Software Driver included on the installation CD and on the Pepperl+Fuchs website provides the link between the USB port and the HART communication software by generating a virtual communications port.

The interface is enclosed in a small, rugged polycarbonate housing, suitable for industrial environments. It connects to your computer with a short integrated cable that terminates in a USB A connector. The interface connects to field devices with an integrated 6-foot cable that terminates in 2 test clips.

For the most recent version of this document, visit www.pepperl-fuchs.com.

3 Directive Conformity

Europe	
Directive 2014/30/EU	EN 61326-1:2013
Directive 2011/65/EU (RoHS)	EN 50581:2012

4 Technical Specifications

Supply	
Input current	30 mA at 5 V
Power supply	Powered by USB port , No external power required
Interface	
Interface type	USB port
Output	
Signal	0.5 +/- 0.1 Vpp trapezoidal wave at 1200/2200 Hz, 24 VDC at 40 mA to device
Galvanic isolation	
Output/interface	1500 VDC
System Requirements	
Operating system	Windows® 98, 2000, 32-bit XP, 32-bit Vista, 32- and 64-bit Windows® 7, and Windows 10
Ambient conditions	
Operating temperature	-20 ... 50 °C (-4 ... 122 °F)
Storage temperature	-20 ... 60 °C (-4 ... 140 °F)
Relative humidity	0 ... 95 % non-condensing
Mechanical specifications	
Degree of protection	IP20
Connection	USB (type A) Connector, red and black test clips
Material	Polycarbonate
Dimensions	75 mm x 33 mm x 15 mm
Cable length	1.8 m 2-strand wire terminating in 2 test clips, 15.2 cm cable terminating in 1 USB type A connector

4.1 USB Pin Connections

	Pin Number	Description
Data D+	3	Differential full speed USB data at 12 MHz, normally high
Data D-	2	Differential full speed USB data at 12 MHz, normally low
VBUS	1	5 V
GND	4	Ground

5 Getting Started

5.1 Hardware and Software Requirements

- Viator USB HART Interface, HM-MT-USB-010031
- Computer with one ore more USB ports
- Windows® operating system:
 - Windows XP
 - Windows Vista
 - Windows 7
 - Windows 8
 - Windows 10
- Viator installation CD with Viator software driver, software utilities, and documentation
- HART application software for communication with HART field devices



Note!

HART communication software must be capable of recognizing virtual COM ports. DOS and Windows NT-based applications do not recognize USB virtual COM ports and are therefore not supported.

5.2 Check Your Viator USB HART Interface Package

Your Interface package contains the following items:

- Viator USB HART Interface
- Viator installation CD

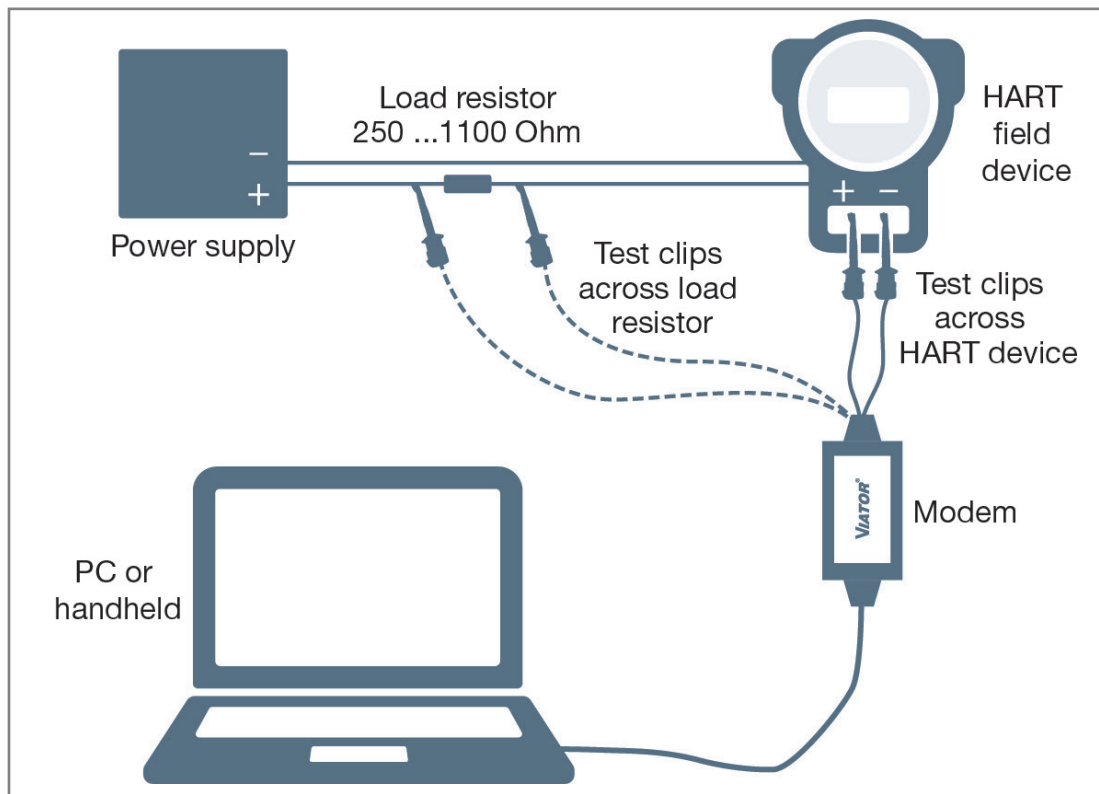
If any of these items is missing or damaged, contact Pepperl+Fuchs.

Viator® USB HART Interface Manual

5.3 Connecting to a HART Field Device

The interface has an integrated USB cable with a male A plug for connection to the computer, and it has an integrated 6-foot cable with 2 test clips.

The interface connection to the HART network is transformer isolated and polarity insensitive. Transformer isolation allows you to connect the interface across the load resistor or across the HART device. Polarity insensitivity means that you may attach either test clip to either side of the HART device or load resistor.



Connect the test clips:

- across the HART field device or
- across the load resistor.



Caution!

Do not connect the Viator interface across the power supply. This will not allow communication with the HART field device.

5.4 Standby and Hibernate Power Saving Modes

The Viator USB Interface driver supports all portable computer power saving modes. However, interruption of HART communication software by a standby or hibernate mode may necessitate restarting HART communication software to continue HART communications.

6 Installing Viator Utilities and Drivers



Note!

Install utilities and drivers before plugging in the Viator.



To download and install utilities and drivers, visit www.pepperl-fuchs.com.

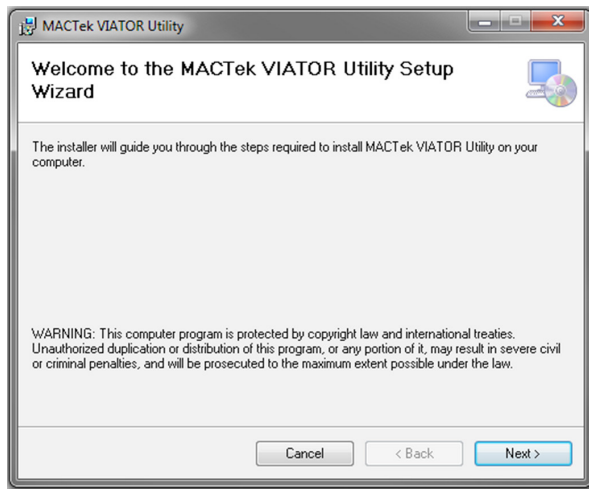
1. Enter your Viator's type code (**HM-MT-USB-010031**) into the keyword search box at the upper-right corner of the Pepperl+Fuchs homepage.
2. Select the appropriate product page from the search results.
3. Download the installer from your Viator's product page under the "software" tab.
4. Open the ViatorCheckBT folder and double click the **setup.exe** file to start the installation process.



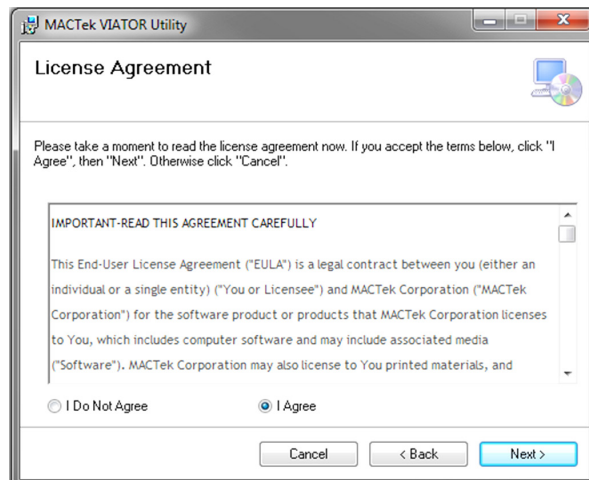
Note!

During installation, screens will appear that prompt you to install documentation, test utilities, and install HART communications software. Installation of all documentation and utilities is optional. Only the Viator drivers are necessary for proper operation.

5. The preliminary screen will appear. Click **Next >**



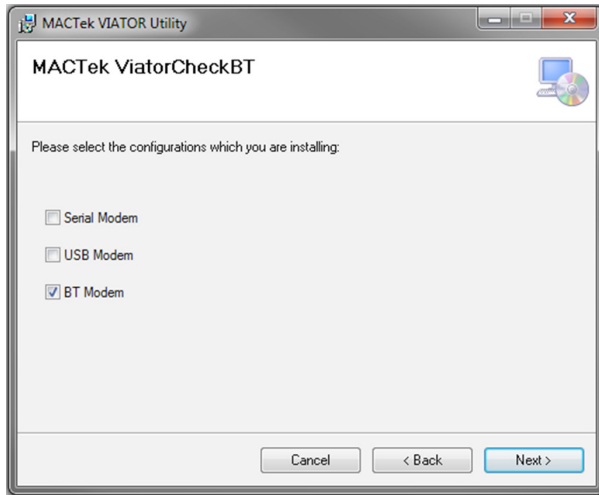
6. The next screen will display the end-user license agreement:



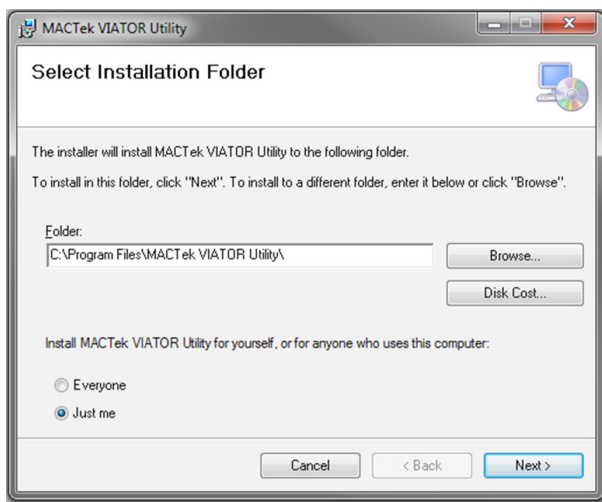
Viator® USB HART Interface Manual

7. You will then be prompted to select which HART Interface you plan to install.

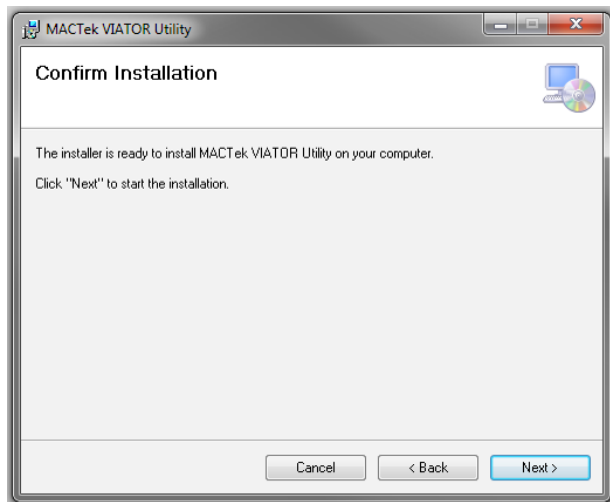
- Select "USB Modem"
- Click **Next >**



8. The next window will allow you to select the folder where you would like to install the utility file.

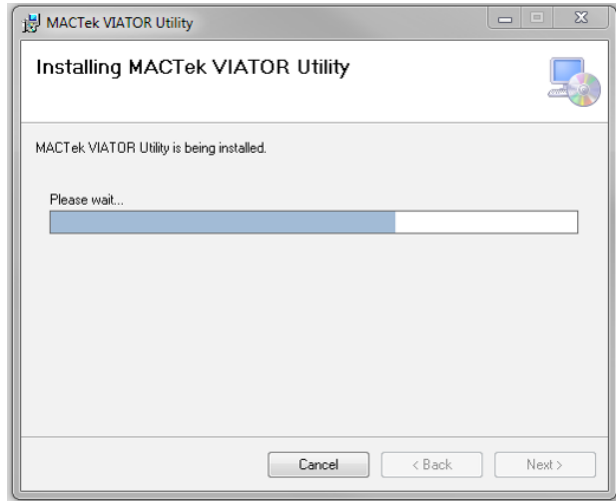


9. After selecting the installation folder, you will be prompted to start the installation.
To confirm installation, click **Next >**

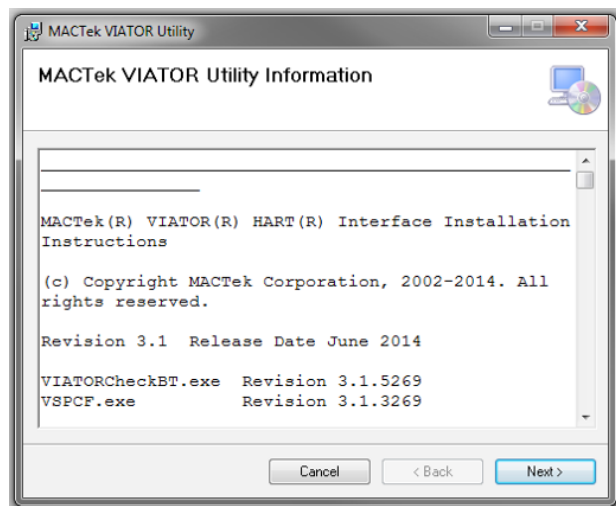


Viator® USB HART Interface Manual

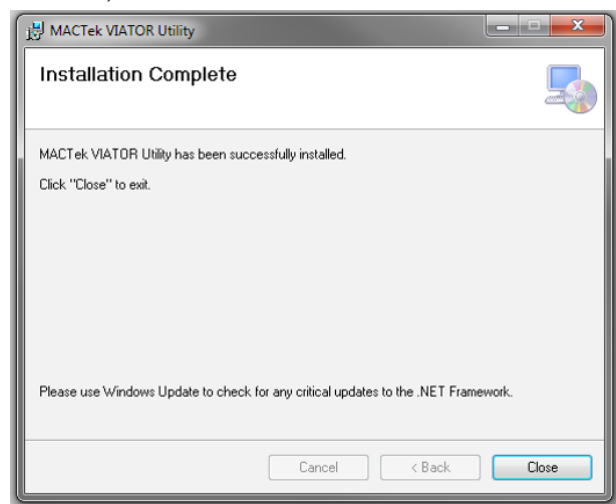
10. The utility will now begin to install:



11. After installation is complete, you will receive an installation report and information on the utility file.
To continue, click **Next >**



12. Installation is now complete.
To exit, click **Close**



7 ViatorCheckBT™ Software Utility

7.1 Overview

ViatorCheckBT is a diagnostic software utility that can be used with the entire family of Viator interfaces. ViatorCheckBT provides a simple way to test HART connections between a PC with a Viator interface and a field device. ViatorCheckBT also gives you the ability to configure the Viator Bluetooth Interface.

7.2 Installing ViatorCheckBT

7.2.1 System Requirements for Use with Windows

Operating systems supported:

- Microsoft Windows Vista operating system
- Microsoft Windows XP (SP2 recommended) operating system
- Microsoft Windows Server 2003 operating system

Microsoft .NET Framework 2.0 is needed to install the program.

7.2.2 Installation

Use an administrator login to install ViatorCheckBT.



1. Download the Viator installation file from www.pepperl-fuchs.com.
2. Start the installer by running the downloaded exe file.
3. Click **Install ViatorCheckBT**.
4. Follow the prompts on your screen.
5. As part of the installation, the com0com software will be installed. On XP, this will invoke the “Found New Hardware Wizard.” Select **install the software automatically** and, if asked to search online, indicate “No.”

7.2.3 Removing ViatorCheckBT

As part of uninstalling ViatorCheckBT, com0com will be removed by its uninstaller. Click **Next** to continue through the prompts and remove all components of com0com.

Viator® USB HART Interface Manual

7.3 Using ViatorCheckBT



To begin running ViatorCheckBT, select **Start → Programs → VIATOR files for MACTek → Utilities → VIATORCheckBT**.

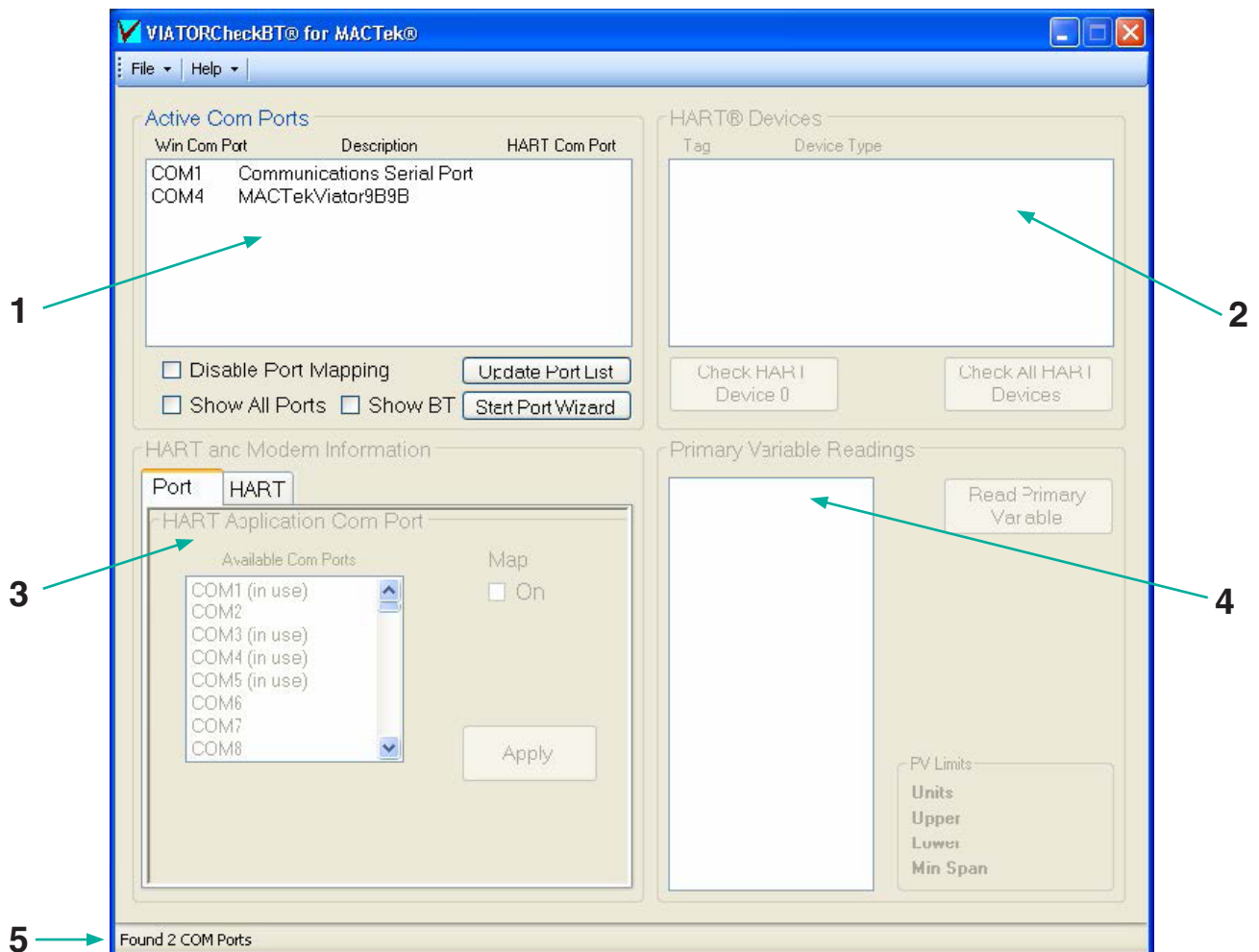


Note!

If your Viator Bluetooth Interface is not connecting, try powering off the Viator interface and powering it back on. See chapter 7 for instructions on establishing communication.

The ViatorCheckBT application is divided into 5 sections, shown in the below screenshot:

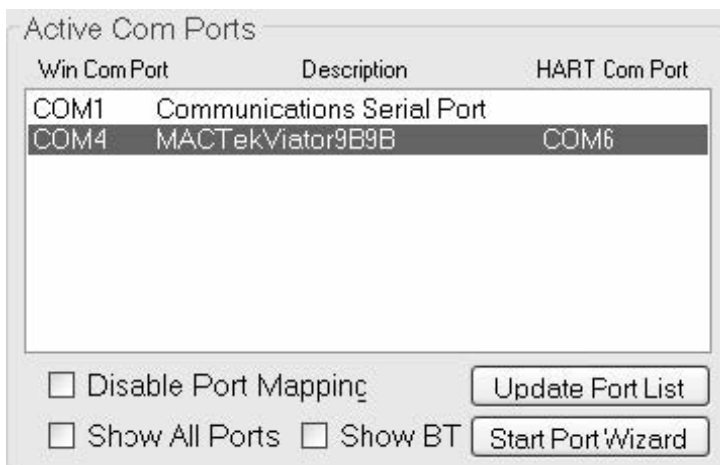
1. Active COM Ports List
2. HART Devices List
3. HART, Port Mapping, and BT Modem Information
4. Primary Variable Readings
5. Viator Status Message Line\



Viator® USB HART Interface Manual

7.3.1 Active COM Ports List

The Active COM ports list displays all of the active COM ports on the system, along with some descriptive information about what type of COM port it is (such as USB or Bluetooth) and the HART COM port it is set to. For Bluetooth COM ports, the Bluetooth device name will also be displayed if it can be determined. The default list shows only COM1-4, Viator USB modems, and all Viator Bluetooth modems.

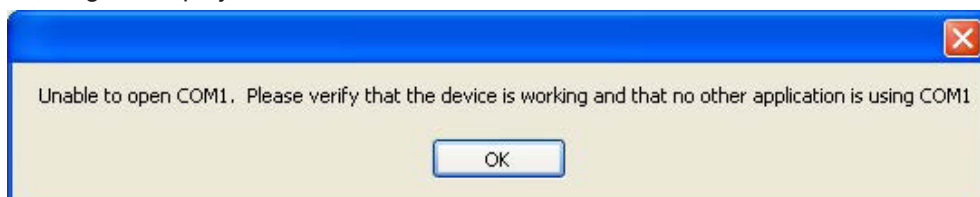


7.3.1.1 Update Port List

The options **Show All Ports** and **Show BT** allow display of all ports with or without BT ports. Setting **Show All Ports** will automatically select **Show BT** ports and un-checking **Show BT** with **Show All Ports** checked will only show the serial and USB ports. Pressing **Update Port List** will scan for any new modems and will update the list based on the port selection checked.

7.3.1.2 Selecting a Port

Clicking on a COM port will select it, and it will attempt to open. If a previous COM port was already opened by ViatorCheckBT, that one will now be closed. If the COM port cannot be opened, an error message is displayed:



Once a COM port is selected and opened, the "HART Device List" and the "HART and Modem Information" areas become available.

7.3.1.3 HART COM Port

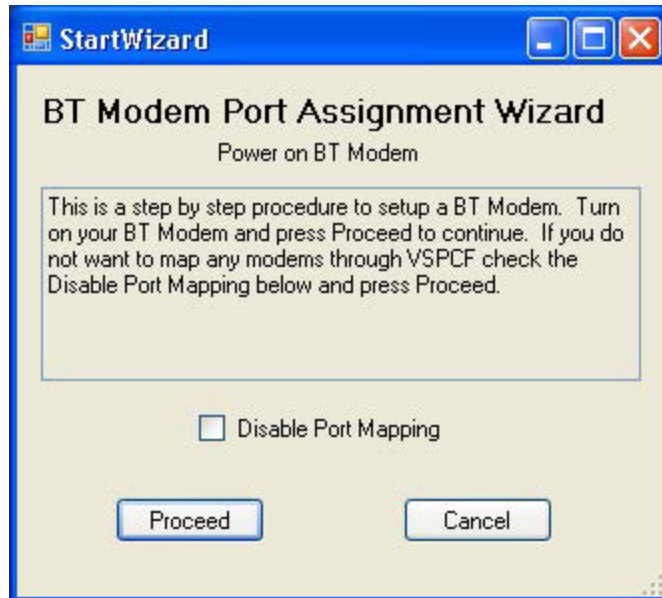


Upon starting, ViatorCheckBT will scan for Viator Bluetooth modems. If any are detected, it will map the actual modem port to an available HART COM port. Use the HART COM port when specifying the port to a HART application. If the port mapping is not required, then select **Disable Port Mapping** before exiting the program to inhibit the Viator Serial Port Communication Filter (VSPCF) program from starting and mapping the ports. The Viator Bluetooth modem ports should be mapped to allow better performance. This is critical for some HART applications to work with the Bluetooth modem.

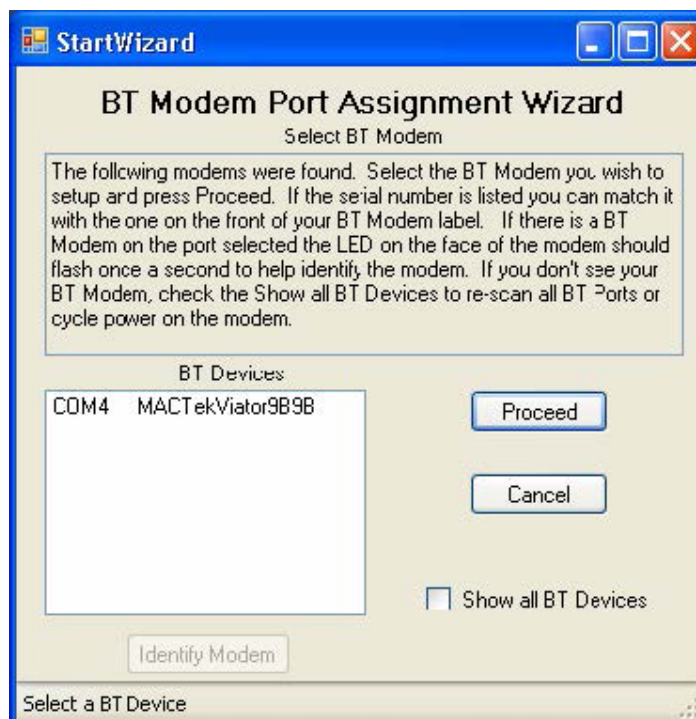
7.3.1.4 Port Wizard



The Port Wizard is a step-by-step procedure for creating a mapped port. Click on **Start Port Wizard** below **Update Port List** to go through a series of windows that will explain the steps and set up the mapping. The first screen shown below allows the mapping to be disabled completely. To continue with the wizard, click **Proceed**.

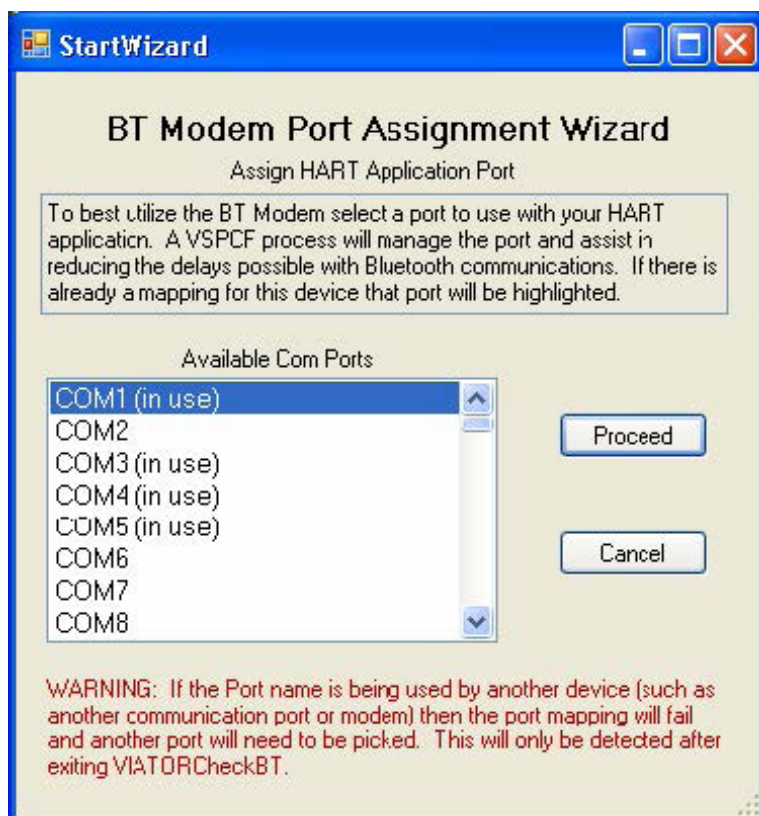


The next screen allows the selection of the Bluetooth modem to set up. If the BT modem does not appear in the list, check **Show all BT Devices** to re-scan. The modem may also need to have the power cycled in order to appear. After selecting the modem port, the **Identify Modem** button can be used if the modem is not easily detected among other modems. A long steady blink every second will help identify the modem selected.

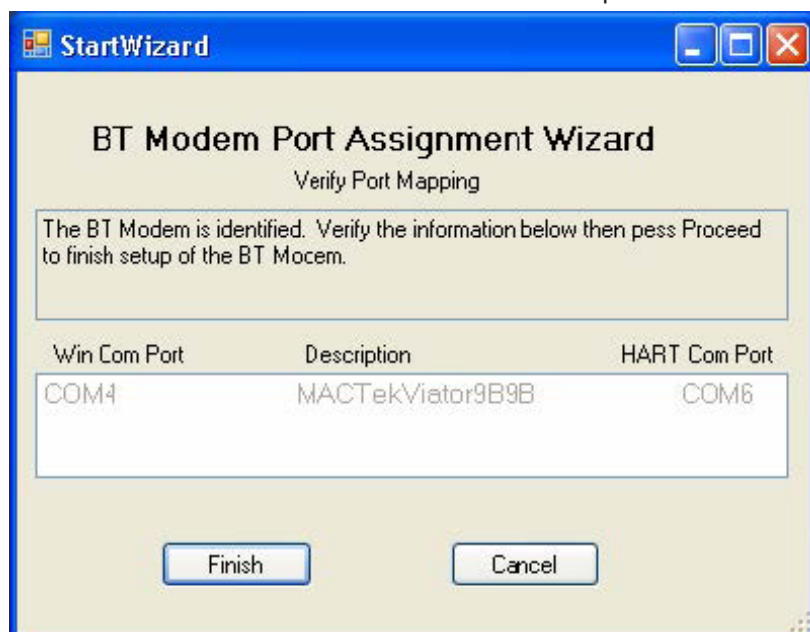


Viator® USB HART Interface Manual

After the HART Bluetooth modem has been selected, the next step is to select a port to map the modem to. This will be the actual port that a HART application will use to communicate through the modem. Select a port that your application can recognize. If the port is shown as “(in use),” do not choose it unless you are absolutely sure that you do not have any device on that port. If another BT modem or piece of equipment has reserved that port, it will not be possible to enable mapping for it.



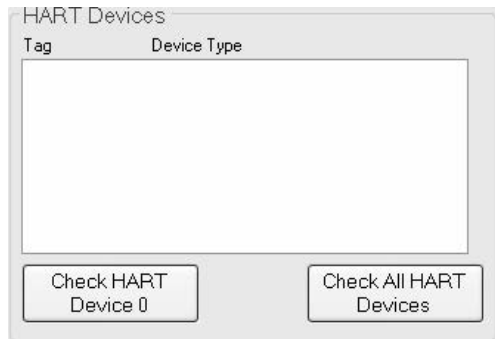
The final screen allows the mapping selections to be confirmed. The actual mapping will not occur until ViatorCheckBT is closed and VSPCF is run on that port.



Viator® USB HART Interface Manual

7.3.2 HART Devices List

The HART device list displays all of the detected HART devices after a check has been performed. There are two types of checks that can be performed: **Check HART Device 0** and **Check All HART Devices**.



- **Check HART Device 0** checks for and displays a HART device existing on polling address 0 only.
- **Check All HART Devices** checks for and displays all HART devices existing on polling addresses 0 to 15.

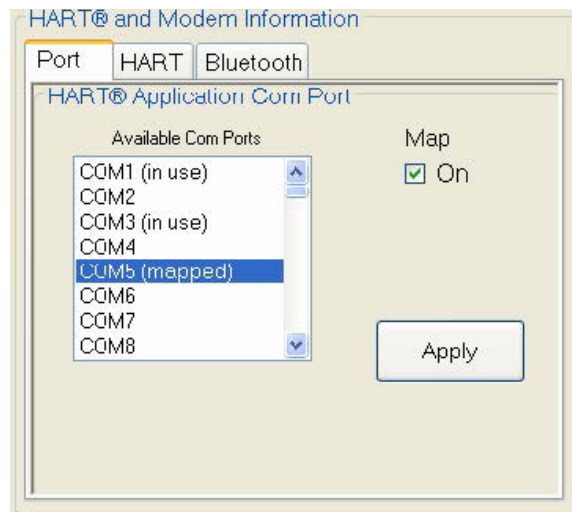
When the check is complete, the first entry in the list will be selected and additional HART information will be retrieved from that device and displayed in the HART and modem information area.

If more than one device is detected, the active device can be selected by clicking on the entry in the list. When a new device is selected, additional HART information will be retrieved from that device and displayed in the HART and modem information area. After a HART device is checked, the HART Information tab displays information about the active device, such as the manufacturer ID, device ID, and the tag name.

7.3.3 HART Device/Modem Information

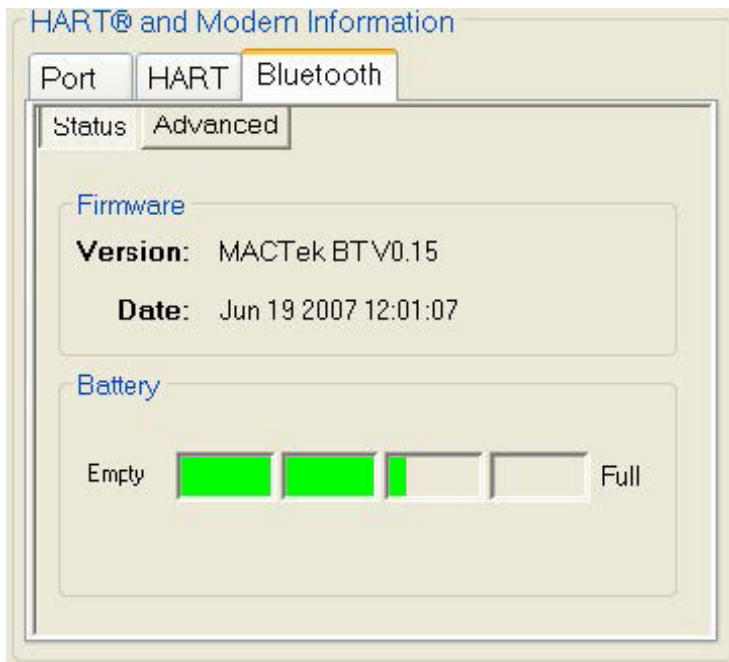
The HART and Bluetooth information area tabs display additional information about the active HART device. The tab for Bluetooth information will only be shown if a Viator Bluetooth modem is selected.

The port information tab allows the port mapping to be enabled or disabled for the selected device and the selection of a port from the available COM Ports to be mapped for the HART application COM port. When enabled, the mapping is shown in "Active Com Ports." If a port is shown as "(in use)," this means that a device has been previously located at this port. If you believe that this is no longer true and want to re-use one of the lower ports for applications that may only be able to work with ports COM1-8, then double clicking on the port will switch its status to free. You can then assign a mapping to that port by selecting it and pressing **Apply**.



Viator® USB HART Interface Manual

When a Bluetooth modem is selected, the Bluetooth tab will show the basic settings screen for the Viator interface. This screen shows the current firmware revision and a battery gauge for the Viator interface.

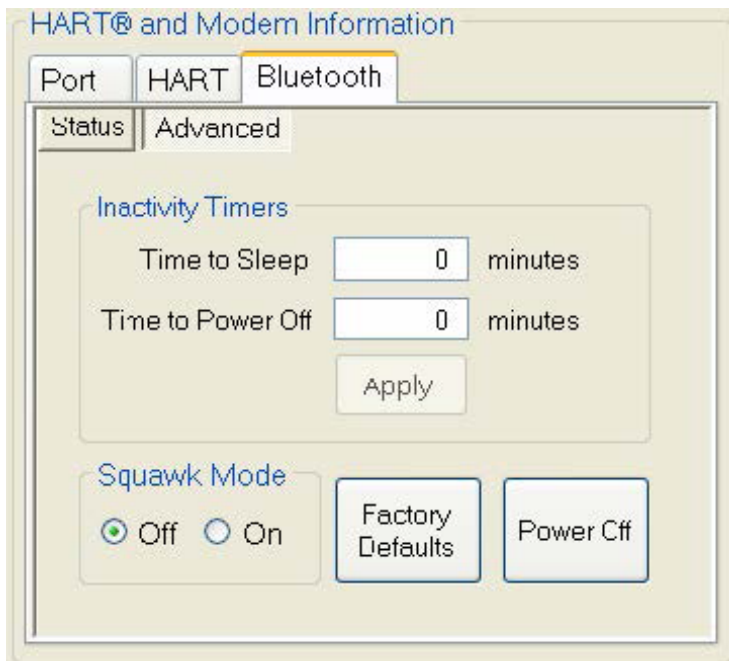


Clicking on the Advanced Button will bring up advanced settings that can be used with the Viator Bluetooth HART Modem.



Note!

Inactivity time is defined as the amount of time since the last HART message was received or transmitted.



Viator® USB HART Interface Manual

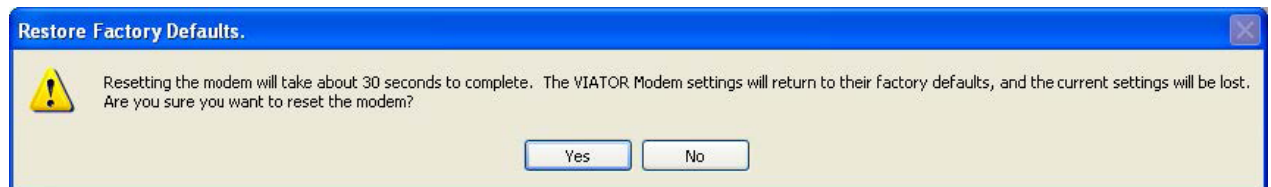
Time to Sleep: Amount of inactivity time (in minutes) after which the Viator interface will disconnect and enter a sleep mode (this helps to conserve battery life). When in sleep mode, connection can be re-established from the PC to the Viator interface. If this setting is set to 0, the feature is disabled. To change this setting, enter in the new value and click **Apply**.

Time to Power Off: Amount of inactivity time (in minutes) after which the Viator interface will completely power off. Once the Viator is powered off, the power button must be pushed to turn it back on. If this setting is set to zero, the feature is disabled. To change this setting, enter in the new value and click **Apply**.

Squawk Mode: Set to **On** to enable Squawk Mode; **Off** will disable Squawk Mode. Squawk Mode is a way to identify a Viator interface and, when enabled, it will display a unique LED blink pattern. This is useful when multiple Viator interfaces are being used.

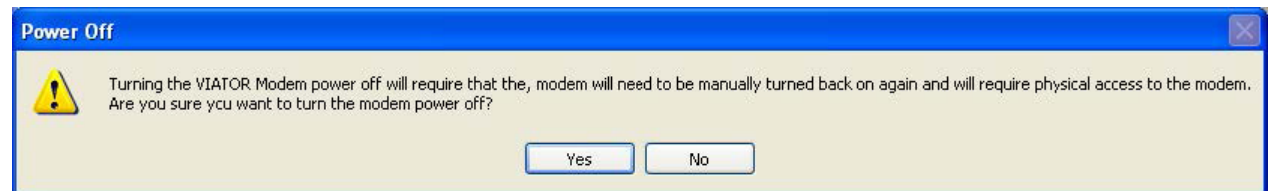
Factory Defaults: This button resets the Viator interface back to the factory default settings. Resetting to factory defaults will also initialize a number of settings with the Bluetooth connection and takes 20 to 30 seconds to complete. While in progress, the LED on the Viator interface will blink on and off slowly until complete. This will cause the COM port to close.

The following prompt will be displayed when this item is selected:



Power Off: Clicking this button will turn off the Viator interface and cause the COM port to close. Once the Viator is powered off, the power button must be pushed to turn it back on.

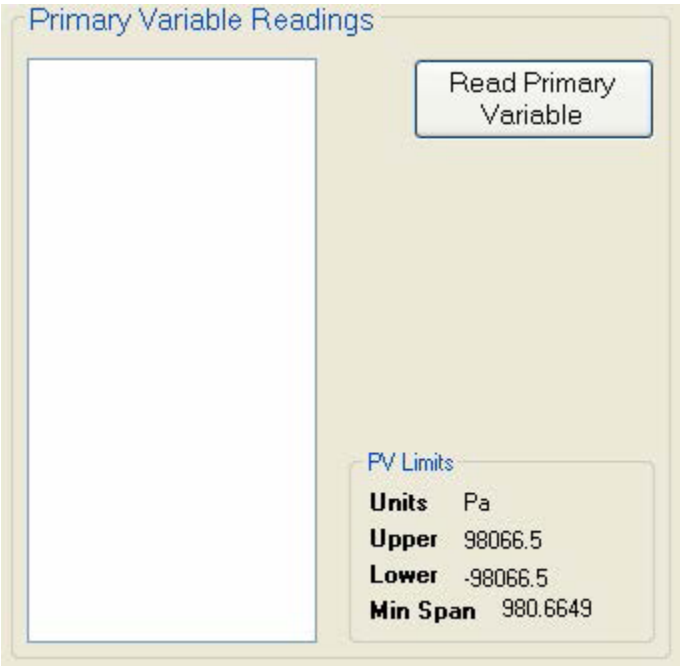
The following prompt will be displayed when this item is selected:



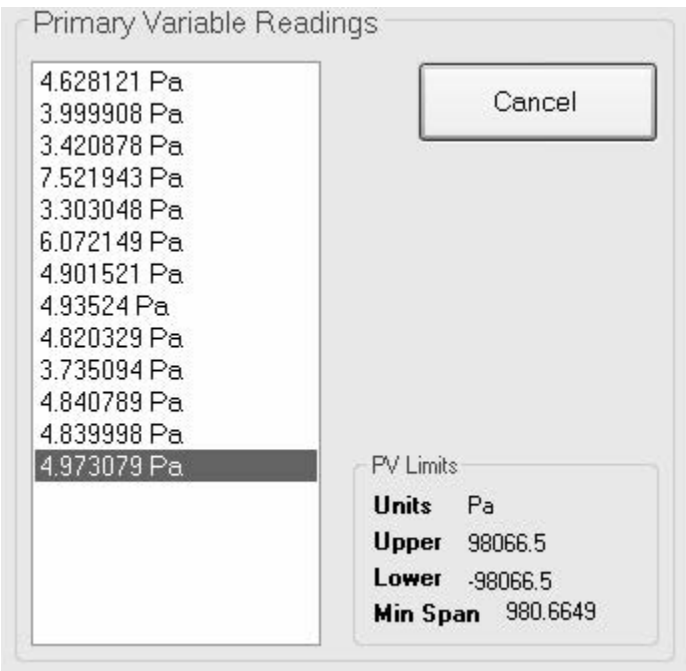
Viator® USB HART Interface Manual

7.3.4 HART Device Primary Variable Readings

After a HART device has been selected in the HART Device List, the primary variable for the active device can be read. In the lower right part of this area, the HART primary variable limits are displayed for the active device.



Read Primary Variable: Clicking this button will read the primary variable every 1 to 2 seconds from the active HART device and display it in the window. Once pressed, the button will change to say **Cancel**, which can be clicked to cancel the reading of the primary variable.



Viator® USB HART Interface Manual

7.3.5 Status Message Line

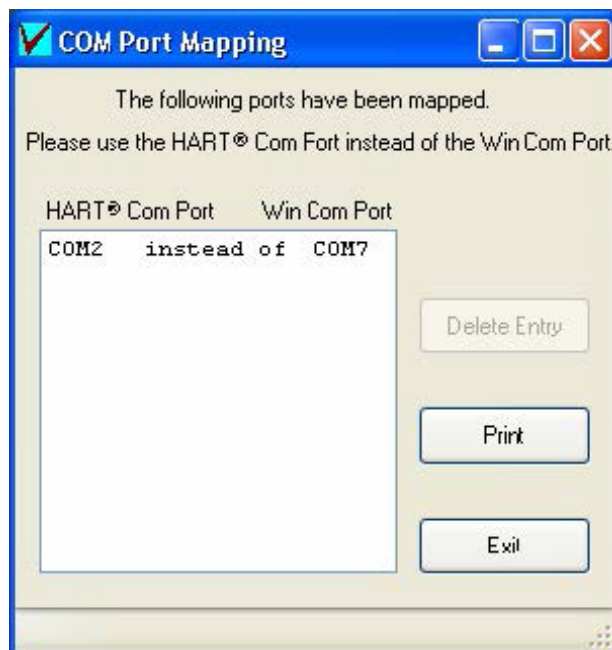
This line will display status information for the current operation, such as opening a COM port or reading the primary variable.



7.3.6 Exiting ViatorCheckBT

When exiting ViatorCheckBT, any ports shown as mapped in the active COM ports window will get mapped if **Disable Port Mapping** is not checked. This mapping will cause the program VSPCF to be started for each mapped port. When active, the VSPCF program will appear in the Sys Tray. Each time ViatorCheckBT is started, the mapping for these ports will be discontinued until after ViatorCheckBT is exited. Each individual port has the ability to be mapped or not, and all mappings can be disabled by selecting **Disable Port Mapping** in the active COM ports window.

If mapping is enabled, the COM port mapping window will be displayed. This shows which port a HART application should use (HART COM Port) and which modem it is associated with (Win Com Port). If there are other ports that may have been mapped previously that are no longer needed, they can be selected and deleted. If any ports conflict, it will be shown here and the conflicting port can be deleted. After clicking **Exit** on this screen, the ports will be set up and VSPCF will be run for each port in the list.



7.4 Viator Serial Port Communication Filter

7.4.1 Overview

The Viator Serial Port Communication Filter (VSPCF) is a diagnostic software utility that is used with the ViatorCheckBT Software Utility. It shows the communication port mapping for the HART communication port to the virtual PC communication port.

7.4.2 Installation

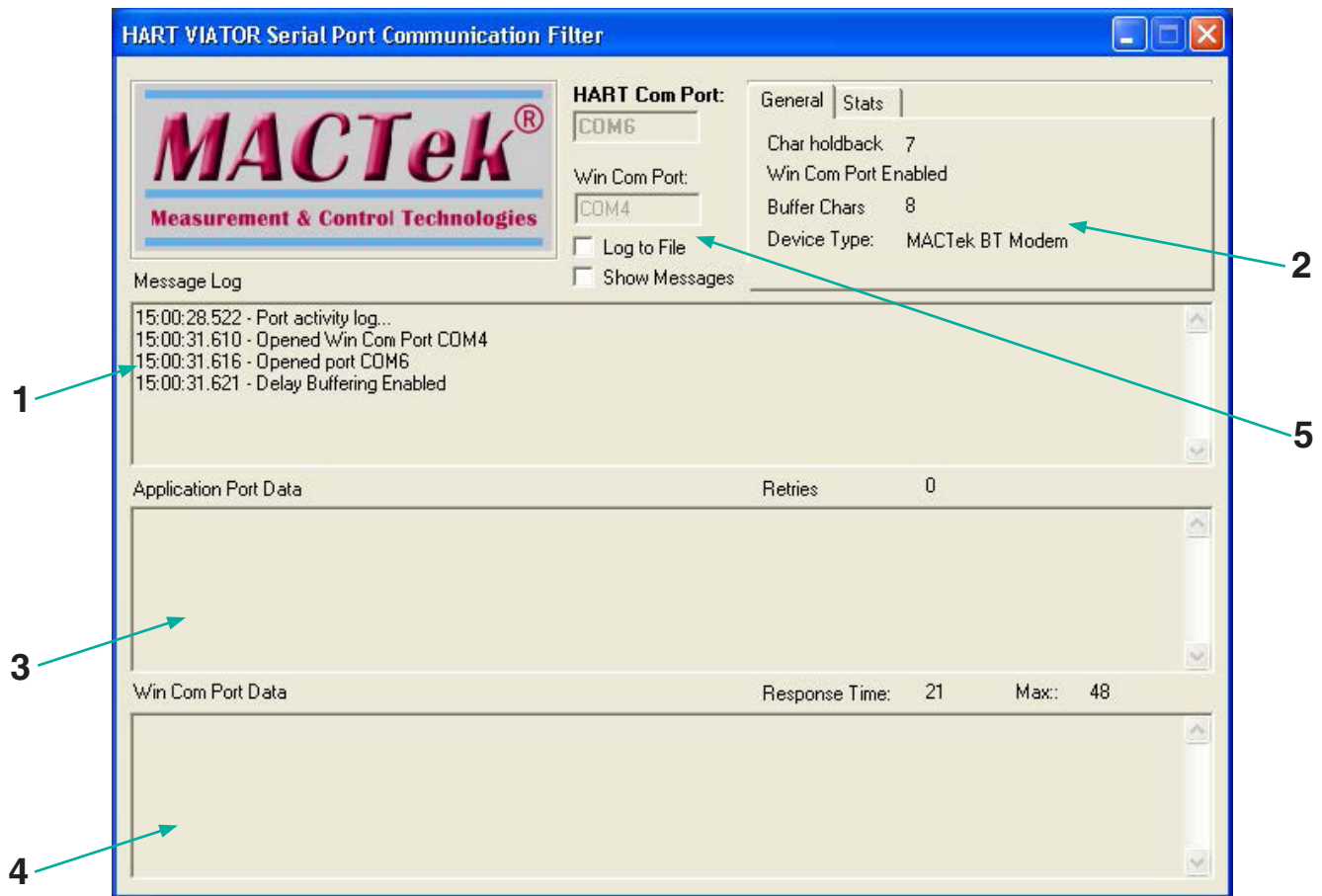
VSPCF is installed as a component to the ViatorCheckBT software utility. See chapter 10.2.

Viator® USB HART Interface Manual

7.4.3 Using VSPCF

VSPCF is started after ViatorCheckBT exits when a Windows COM port is mapped in ViatorCheckBT to a HART COM port. If **Disable Port Mapping** is checked, VSPCF will not be started when ViatorCheckBT exits. ViatorCheckBT will scan for Viator Bluetooth modems and, if detected, will map the actual modem port to an available HART COM port. Use **HART COM port** when specifying the port to a HART application. VSPCF will start after exiting ViatorCheckBT. VSPCF will restart after a reboot from the Startup folder.

When VSPCF is running, a VSPCF icon will be displayed in the lower-right PC system tray. Hovering the mouse over the VSPCF icon will show a quick status of the mapped port or application state. Right clicking the VSPCF icon will bring up the VSPCF menu. Double clicking the icon will bring up the following screen:



The VSPCF logging window is divided into 4 sections, as shown in the above screenshot.

1. Message Log
2. HART Data Information tabs
 - a. General – general device information
 - b. Stats – information on the number of packets and bytes on the port and a button to clear the statistics
3. Application Port Data log window
4. Windows COM Port Data log window
5. Port and Message Settings window

Viator® USB HART Interface Manual

7.4.4 Message Log

This section shows a log of system information about the application and communication ports and shows an abbreviated message log between the PC communication port and the HART communication port. Checking the **Log to File** checkbox will append a log to the utilities folder with all of the data traffic shown in the combined windows.

7.4.5 HART Data Information Tabs

The General tab displays the modem port status, the modem type, and some settings for the virtual ports.

The Stats tab displays information on the number of master packets, burst packets, and the number of bytes on the interface. The App packets and bytes are from data from an application sending through VSPCF. Modem, Burst, and Bytes are those generated on the HART bus as seen by the HART modem and may represent data from another master as well as the slave device. STX packets from either a primary or secondary master can come from an application using VSPCF or from monitoring another master on the HART bus. ACK primary and secondary packets are those seen on the HART bus. Clicking the **Clear Stats** button will clear all the information gathered in the tabs and on the screen. The message logs will not be cleared.

7.4.6 Application Port Data Log Window

Data from the application is represented here in a format that indicates the number of preambles by a '#' character, an STX/ACK (master/slave response), a HART Address, HART Command, and HART data section followed by the HART checksum. The number of retries is shown here, which reflects when the application sends the same message multiple times in sequence. This does not include "Command 0" messages which are routinely sent multiple times in sequence.

7.4.7 Windows COM Port Data Log Window

This section shows the communication data through the HART modem interface. The message is shown with a '#' indicating preambles followed by the long address if present (preceded by 'P', 'S', and 'B'), the message type (ACK/STX/BACK), the command (preceded by 'C'), the status (preceded by 'S'), the command data (preceded by 'D'), and the checksum.

```
13:50:38.288      #####(BACK)[ SB 37 DT 04 ID 1EF313 ][ C 01 ][ S 0040 ][ D 01 BC 26 B7 7B ]:1D
13:50:38.331      #####(STX)[ SB 37 DT 04 ID 1EF313 ][ C 6D ][ D 00 ]:63
13:50:38.684      #####(ACK)[ S 37 DT 04 ID 1EF313 ][ C 6D ][ S 0040 ][ D 00 ]:65
```

The Response Time field is the time in milliseconds that the slave took to start a response from the end of the last master message. The Max time is the longest response time detected.

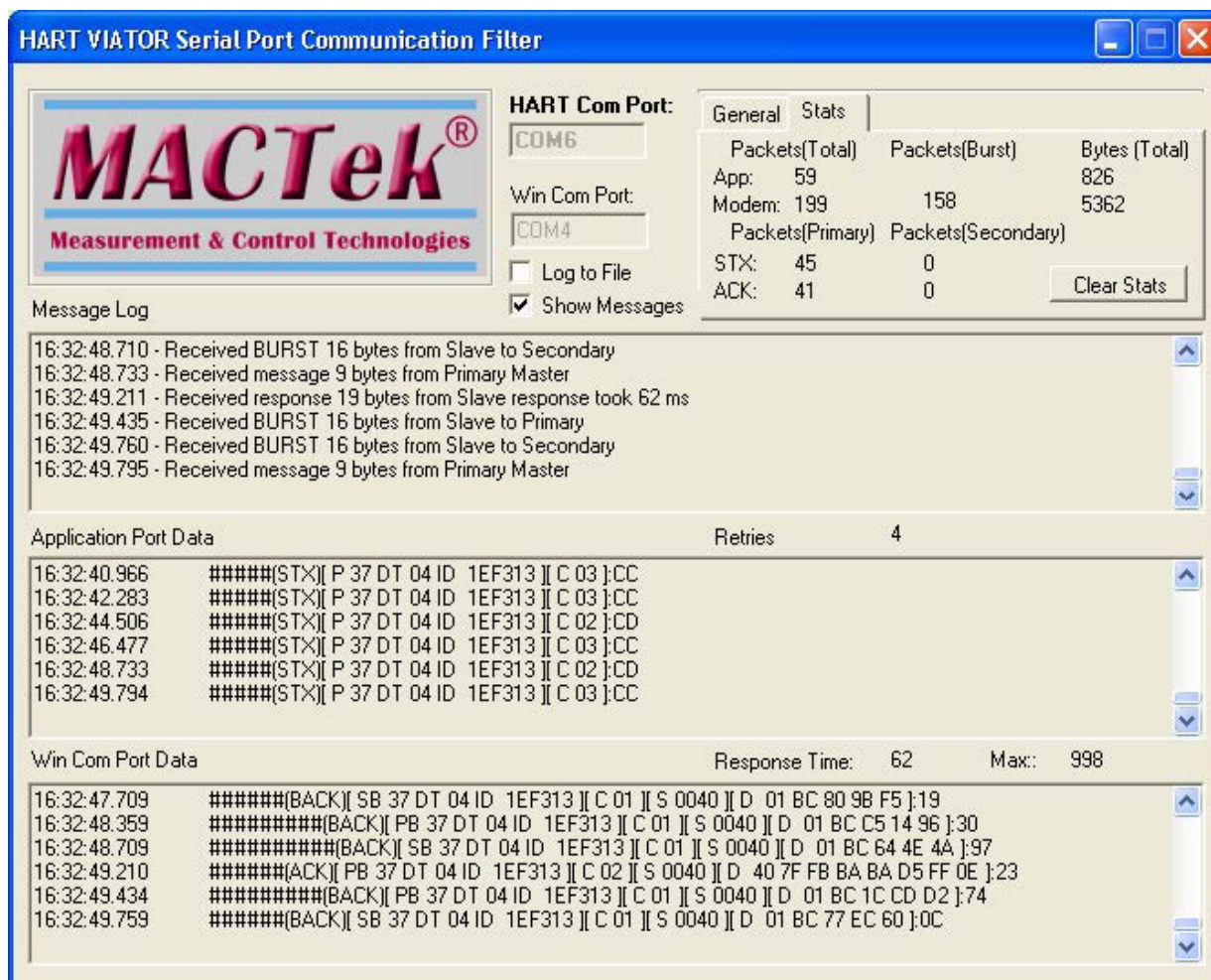
7.4.8 Port and Message Settings Window

The Modem port and Mapped ports are listed in this section and a checkbox to **Log to File** can be set to save the data to a file. The file on the PC is called HARTComLog.txt and is located in the same folder where the application resides (normally C:\Program Files\MACTek VIATOR Utility\Utilities). When VSPCF is started, only the port information messages are shown and not any message information in the log windows. When **Show Messages** is enabled, the current messages will start to be displayed. It is recommended that this is not enabled for more than a 24 hour period, because it can slow down the performance of VSCPF. **Log to File** can be used in place of the screen messaging if data needs to be collected for extended periods of time.

Viator® USB HART Interface Manual

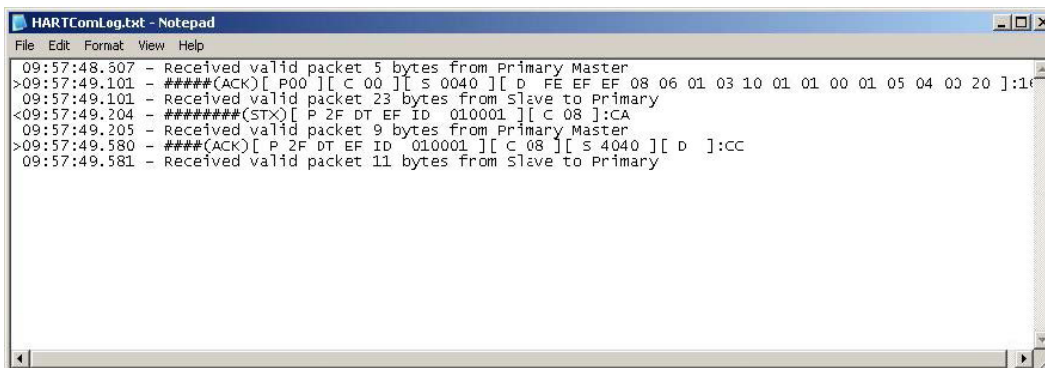
7.4.9 Viewing HART Data Activity

This is an example of HART data activity as viewed with the VSPCF logging window. An application sent two commands to the slave device shown in the application port data section. The responses from the slave are shown in the Win COM port data section. Information on the size and timing of the messages is shown in the message log section as well as under the Time tab.



7.4.10 HART Communication Log

If the **Log to File** checkbox is checked in the VSPCF window, the HART data will be logged to a file located in the directory where the application is installed (normally C:\Program Files\VIATOR files for MACTek\Utilities). The data from all three logging sections are presented with a > shown for received data from the modem and a < shown for transmitted data to the modem by the application.



Viator® USB HART Interface Manual

7.4.11 VSPCF Menu

Clicking the right mouse button over the VSPCF icon in the lower-right system tray will bring up the following menu:



7.4.12 Run at Startup

By default, **Run at Startup** is checked and will allow VSPCF to start each time the PC is rebooted and, if necessary, logged in. Uncheck **Run at Startup** to manually control when VSPCF will be run.

7.4.13 Delay Buffering

The **Delay Buffering** option should always be checked and allows the Bluetooth modem to function properly regardless of delays associated with Bluetooth communications.

7.4.14 Closing VSPCF

Click on **Close** to shut down the VSPCF application and restore access to the real Bluetooth modem port. When the VSPCF window is open, closing the window does not shutdown VSPCF. You must use the **Close** menu item to shut down VSPCF.

Viator® USB HART Interface Manual

CUSTOMER REGISTRATION FORM

Dear Viator Customer:

To register your product, please provide the information requested below and send this registration form to Pepperl+Fuchs at sales@us.pepperl-fuchs.com or fax it to 330-963-5827. This information will enable us to serve you better with timely distribution of product updates and new product information.

Sincerely,
Pepperl+Fuchs Inc.

TO: Customer Registration
COMPANY: Pepperl+Fuchs Inc.
PHONE: (330) 486-0056
FAX: (330) 963-5827
EMAIL: sales@us.pepperl-fuchs.com

NAME: _____

EMAIL: _____

COMPANY: _____

STREET: _____

CITY: _____ STATE: _____ ZIP: _____

COUNTRY: _____

PHONE: _____ FAX: _____

DATE OF PURCHASE: _____

PRODUCT PURCHASED (PLEASE CHECK):

Viator Bluetooth Interface (Model 010040) _____

Viator Bluetooth IS Interface (Model 010041) _____

Viator USB Interface (Model 010031) _____

Viator RS-232 Interface (Model 010001) _____

Viator USB Interface (Model 010031P) _____

PURCHASED FROM: _____

COMMENTS: _____

Viator® USB HART Interface Manual

LIMITED WARRANTY VIATOR HART INTERFACE

Pepperl+Fuchs Inc. warrants this interface and all its component against defects in materials or workmanship for a period of one year from the date of purchase. This warranty only extends to the original consumer of this product.

If the Interface or a component does not function because of defects in material or workmanship during the warranty period, Pepperl+Fuchs will either repair the defective product or replace it with a new or remanufactured functionally equivalent product of equal value. The original consumer must send proof of purchase along with the defective product as provided below. To obtain service under this warranty, first call Pepperl+Fuchs to obtain a Return Merchandise Authorization (RMA) number. Then, deliver the product, shipment pre-paid, to Pepperl+Fuchs addressed as follows:

Pepperl+Fuchs Inc.
Attn: RMA # _____
1600 Enterprise Pkwy
Twinsburg, OH 44087
USA

Call the Pepperl+Fuchs support center at (330) 486-0056 to obtain an RMA number, or for further product or service information under this warranty.

Pepperl+Fuchs has no obligation to repair or replace any defective product that has been subject to misuse, neglect, accident, or abuse, or subject to alteration or repair by persons other than Pepperl+Fuchs or its authorized repair agents. This warranty does not cover normal wear and tear.

REPAIR OR REPLACEMENT AS PROVIDED UNDER THIS WARRANTY IS THE SOLE AND EXCLUSIVE REMEDY OF THE CONSUMER. PEPPERL+FUCHS SHALL NOT BE LIABLE FOR ANY INCIDENTAL OR CONSEQUENTIAL DAMAGES OR FOR BREACH OF ANY EXPRESS OR IMPLIED WARRANTY ON THIS PRODUCT. EXCEPT TO THE EXTENT PROHIBITED BY APPLICABLE LAW, PEPPERL+FUCHS SPECIFICALLY DISCLAIMS ANY IMPLIED WARRANTY OF MERCHANTABILITY OR FITNESS FOR A PARTICULAR PURPOSE.

Some state or countries do not allow limitations on how long an implied warranty lasts, so the above limitation may not apply to you. In addition, some states or countries do not allow the exclusion or limitation of incidental or consequential damages, so the above limitation may not apply to you.

This warranty gives you specific legal rights; you may also have other rights which vary from state to state and country to country.

No terms in any purchase order or other sales agreement shall alter or replace the terms contained in this Limited Warranty.

Notes

Your automation, our passion.

Explosion Protection

- Intrinsically Safe Barriers
- Signal Conditioners
- Fieldbus Infrastructure
- Remote I/O Systems
- HART Interface Solutions
- Wireless Solutions
- Level Measurement
- Purge and Pressurization Systems
- Industrial Monitors and HMI Solutions
- Electrical Explosion Protection Equipment
- Solutions for Explosion Protection

Industrial Sensors

- Proximity Sensors
- Photoelectric Sensors
- Industrial Vision
- Ultrasonic Sensors
- Rotary Encoders
- Positioning Systems
- Inclination and Acceleration Sensors
- Fieldbus Modules
- AS-Interface
- Identification Systems
- Displays and Signal Processing
- Connectivity