

**Digitalizing hazardous areas.
Enabling connectivity.
Enhancing mobility.**

ecom
A PEPPERL+FUCHS BRAND

android 

Ex-Handy 10 Intrinsically Safe Feature
Phone for Zone 1/21 and Div.1



Your automation, our passion.

 **PEPPERL+FUCHS**

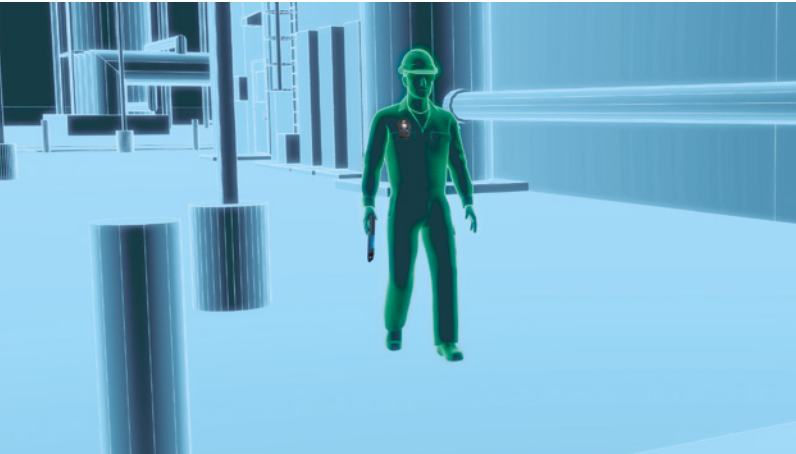
The Next Generation of Rugged, Intrinsically Safe Feature Phones for Hazardous Areas

Simple, rugged, and practical: The Zone 1 / Div. 1 certified 4G/LTE feature phone is ideal for a wide range of applications—from pure communication and push-to-talk to lone worker protection and innovative Industry 4.0 applications.



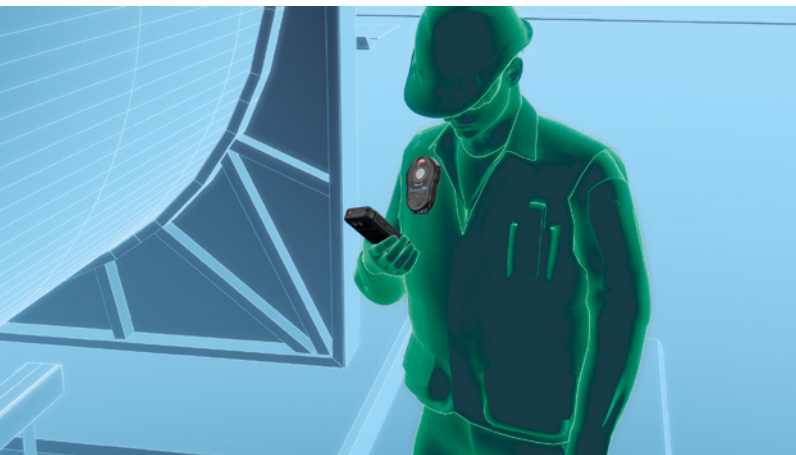
Complete Reliability, Global Use

The Ex-Handy 10 can be operated via keypad or touch screen. The extremely durable, scratch-resistant Gorilla® Glass display can even be used with gloves. With support for 21 LTE frequency bands, the unlocked device meets all of the requirements for global use. The Ex-Handy 10 has been certified for Zone 1/21 and Div. 1, and offers all of the important international certifications.



More Flexibility and Higher Productivity

The Ex-Handy 10 is designed for the harshest environments—it is operable in temperatures from $-20\text{ }^{\circ}\text{C}$ to $+60\text{ }^{\circ}\text{C}$ and has good readability in direct sunlight. The phone has an optional 8 MP camera, which includes autofocus, LED flash, and flashlight. An advanced rechargeable battery and energy management enable outstanding operating times.



Safety for Daily Use

With additional third-party software, the Ex-Handy 10 offers lone worker protection (LWP) for use in hazardous areas to ensure the safety of individuals working alone. User-configurable emergency buttons and built-in sensors monitor personnel location and position to maximize safety. The Android 8.1 operating system ensures regular patches and security updates.



Operating System

- Android™ 8.1

Connectivity

- WiFi 2.4 GHz and 5 GHz support
- WiFi standards 802.11 a/b/g/n/e/k/r/h
- Bluetooth® 4.2 (incl. BLE)
- NFC
- GPS/A-GPS/Glonass/Beidou

LTE

- Supports 21 LTE bands

Ports

- Waterproof magnetic USB 2.0 connection

Camera

- 8 MP camera with autofocus, LED flash, and flashlight

Dedicated Keys

- User-programmable buttons for special functions, e. g. push-to-talk, alarms

Memory

- 2 GB RAM + 16 GB ROM
- SD card up to 128 GB

Power

- Powerful battery for a full working day

Cellular phone carriers

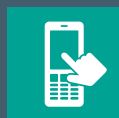


Verified carrier compatibility

Android 9
Open Market, Including Sprint Direct Connect Plus (SDC Plus) PTT.



Global approvals for Zone 1/21, Div. 1 and Zone 2/22, Div. 2



Extremely rugged dust- and waterproof housing with a scratch-resistant display



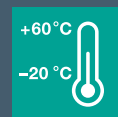
Powerful battery for a full working day



Extremely rugged dust- and waterproof housing with a scratch-resistant display



Supports 21 LTE frequency bands and has no SIM lock for use around the world



Made for use in ambient temperatures from -20 °C to +60 °C

Your automation, our passion.

Explosion Protection

- Intrinsic Safety Barriers
- Signal Conditioners
- FieldConnex® Fieldbus Infrastructure
- Remote I/O Systems
- Electrical Explosion Protection Equipment
- Purge and Pressurization Systems
- HMI Systems
- Mobile Computing and Communications
- HART Interface Solutions
- Surge Protection
- Wireless Solutions
- Level Measurement

Industrial Sensors

- Proximity Sensors
- Photoelectric Sensors
- Industrial Vision
- Ultrasonic Sensors
- Rotary Encoders
- Positioning Systems
- Inclination and Acceleration Sensors
- Industrial Ethernet
- AS-Interface
- IO-Link
- Identification Systems
- Displays and Signal Processing
- Connectivity

www.pepperl-fuchs.com

Subject to modifications • © Pepperl+Fuchs
Printed in the USA • Part. No. 70124704 07/20 00



Pepperl+Fuchs Quality

Download our latest policy here:

www.pepperl-fuchs.com/quality