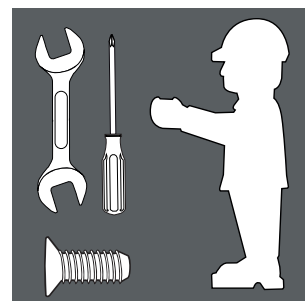


Mounting kit W-ACC-ANTMK-14DBPAN



Date of issue: 2019-02-20 Document No.: DOCT-6365

Your automation, our passion.

Pepperl+Fuchs GmbH

Lilienthalstraße 200 • 68307 Mannheim • Germany • Telefon: +49 621 776-0 • Telefax: +49 621 776-1000 • www.pepperl-fuchs.com • info@de.pepperl-fuchs.com

 **PEPPERL+FUCHS**

Please note!



WARNING

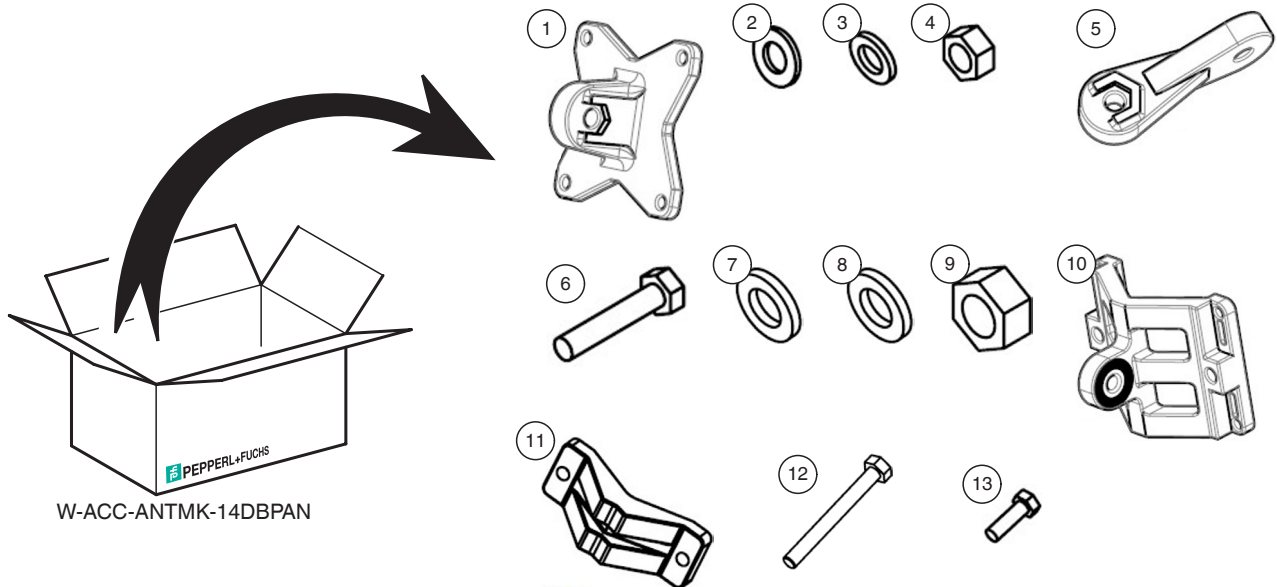
Keep away from catenary and high voltage lines!
Be careful when working at height!
Always secure ladders!
Always tighten screws!



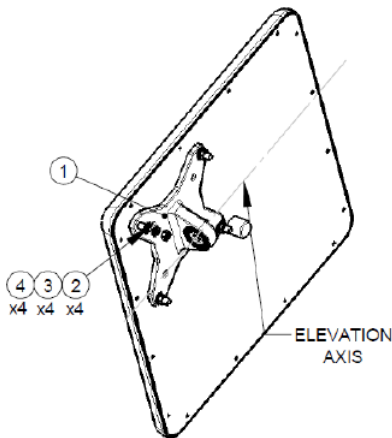
PROPERTY DAMAGE

Avoid bringing the cover of the antenna into contact with acetone, gasoline or oil.

Scope of delivery

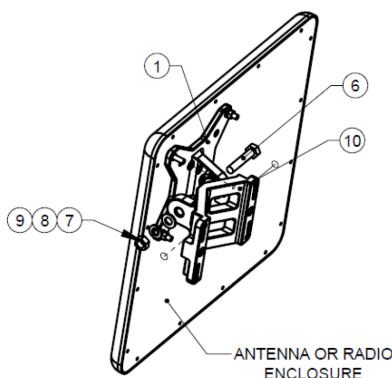


Base bracket installation to antenna



Attach item 1 to the back of the antenna using items 2, 3, 4 as shown.
Verify that the orientation of the hole in item 1 is aligned with the elevation axis.
Use tightening torque of 5.7 N/m.

Installation on a pole



NOTE

Antenna shall be oriented according to the indicated sign on its back plane „UP“ or „HOR.UP“ or „VER.UP“

Step 1

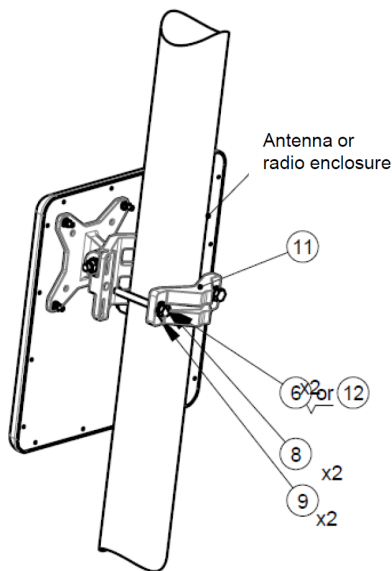
Connect the base bracket as shown above.
Connect item 10 to item 1 (mate knurled surface) using item 6, 7, 8, 9 wie abgebildet.
Note: The bolt head shall be positioned in the socket on item 1.
Use tightening torque of 24 N/m.

Your automation, our passion.

PEPPERL+FUCHS

Pepperl+Fuchs GmbH

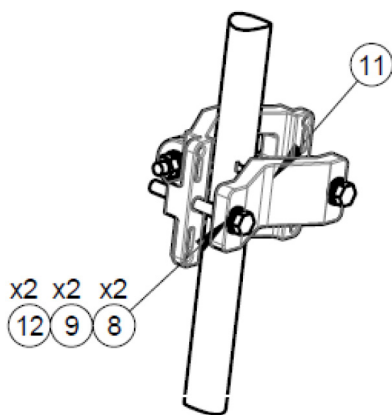
Lilienthalstraße 200 • 68307 Mannheim • Germany • Telefon: +49 621 776-0 • Telefax: +49 621 776-1000 • www.pepperl-fuchs.com • info@de.pepperl-fuchs.com



Step 2 (FOR POLES SIZES 1.75“-3“)

Install the antenna to the pole using item 11, tighten the bracket using items 8, 9, 12 (for small pole diameter use item 6 instead of item 12).

Use tightening torque of maximum 14 N/m. Alternately and equally tighten the two M8 bolts up to its defined tightening torque, in order to prevent unequal pressure on the cast clamps.

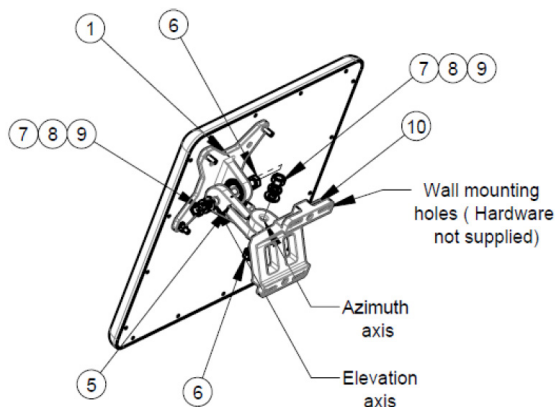


Step 2 (FOR POLES SIZES 1“-1.75“)

Install the antenna to the pole using item 11 as shown, tighten the bracket using items 8, 9, 12.

Use tightening torque of maximum 14 N/m. Alternately and equally tighten the two M8 bolts up to its defined tightening torque, in order to prevent unequal pressure on the cast Clamps.

Mounting on a wall



NOTE:

Antenna shall be oriented according to the indicated sign on its back plane „UP“ or „HOR.UP“ or „VER.UP“

Connect base bracket.

Connect item 5 to item 1 (mate the knurled surfaces) using items 6, 7, 8, 9 as shown.

Note: the bolt head shall be positioned in the socket of item 1.

Mount item 10 on the wall on the desired position (note the azimuth axis orientation).

Attach item 5 to the arm bracket item 10 (mate the knurled surfaces) using items 6, 7, 8, 9 as shown. Note the bolt head shall be positioned in the socket of item 5. Use tightening torque of 24 N/m to the azimuth and elevation hardware.