

MANUAL

6100 Series

Bebco EPS® 6100 Series
Ex pxb Purge and Pressurization System



Your automation, our passion.

 **PEPPERL+FUCHS**

With regard to the supply of products, the current issue of the following document is applicable:
The General Terms of Delivery for Products and Services of the Electrical Industry, published by the
Central Association of the Electrical Industry (Zentralverband Elektrotechnik und Elektroindustrie
(ZVEI) e.V.) in its most recent version as well as the supplementary clause: "Expanded reservation of
proprietaryship."

World Headquarters

Pepperl+Fuchs SE
Lilienthalstr. 200
68307 Mannheim
Germany
Phone: +49 621 776 - 0
Email: info@de.pepperl-fuchs.com

North American Headquarters

Pepperl+Fuchs Inc.
1600 Enterprise Parkway
Twinsburg, Ohio 44087
USA
Phone: +1 330 425-3555
Email: sales@us.pepperl-fuchs.com

Asia Headquarters

Pepperl+Fuchs Pte. Ltd.
P+F Building
18 Ayer Rajah Crescent
Singapore 139942
Phone: +65 6779-9091
Email: sales@sg.pepperl-fuchs.com

1. Preface.....	5
1.1 Information on This Manual	5
1.2 Responsibility of the Operator and/or Installer	5
2. Safety.....	6
2.1 Introduction.....	6
2.1.1 Contents.....	6
2.1.2 Target Group, Personnel.....	6
2.1.3 Symbols Used.....	7
2.1.4 Pertinent Laws, Standards, Directives, and Further Documentation.....	7
2.1.5 Declaration of Conformity.....	7
2.2 Warning Labels	8
2.3 Conditions of Safe Use.....	8
2.4 General Information on Pressurized Enclosures	9
3. Product Description.....	10
3.1 Overview	10
3.2 System Components	11
3.2.1 6100-MP-EX-* Control Unit (Standard Temperature).....	11
3.2.2 6100-MP-EX-* Control Unit (No Regulator)	12
3.2.3 6100-MP-LPP-* Pressure Sensor.....	13
3.2.4 EPV-6100-MP-* Enclosure Protection Vent	13
3.2.5 Temperature Monitoring/Control Accessories	13
3.3 Technical Data.....	14
3.3.1 6100-MP-EX-* Control Unit	14
3.3.2 6100-MP-LPP-* Pressure Sensor.....	16
3.3.3 EPV-6100-MP-* Enclosure Protection Vent	17
3.4 Dimensions.....	19
3.4.1 6100-MP-EX-* Control Unit	19
3.4.2 Mounting the Control Unit.....	20
3.4.3 EVP-6100-MP-* Vent.....	20
3.4.4 EPV-6100-MP-* Vent, Cutout Dimensions	21
3.4.5 Mounting the EPV	22
3.4.6 6100-MP-LPP-* Pressure Sensor.....	22
3.4.7 Mounting the LPP.....	23
3.4.8 Remote-Mounted UIC	23
3.4.9 Mounting the Remote UIC.....	24
3.4.10 6000-TEMP-01 Temperature Hub.....	24
3.4.11 Torque Requirements for 6000-TEMP-01.....	24
3.4.12 6000-TSEN-01 Temperature Sensor.....	25
3.5 Labels and Markings	25
4. Electrical Installation	26
4.1 General Wiring Notes	26
4.2 Power and Intrinsically Safe Wiring	27

4.3	Wiring Parameters	28
5.	Pneumatic Requirements	29
5.1	Protective Gas Supply	29
5.2	Pneumatic Connections	29
5.3	Pressurization Adjustment	29
5.4	Purging Adjustment.....	29
6.	Operation	30
6.1	Turning on Power to the Enclosure.....	30
6.2	Turning off Power to the Enclosure.....	31
6.3	6100 Series System Components	32
6.4	Setup Procedures	37
6.5	Operation in Gas-Hazardous Locations	38
6.6	Programming.....	38
6.6.1	User Interface.....	38
6.6.2	Programming Menu.....	39
6.6.3	Purge Settings.....	40
6.6.4	Units.....	40
6.6.5	Inputs	41
6.6.6	Outputs	44
6.6.7	Password.....	45
6.6.8	Language	45
6.6.9	Bypass Control.....	45
6.6.10	Restore Defaults.....	45
6.6.11	Stats.....	46
6.6.12	Statistics.....	47
6.6.13	Alarm.....	49
6.6.14	Fault	50
6.6.15	Clear Statistics	51
6.6.16	Clear Fault.....	51
6.6.17	Operation Screen.....	51
7.	Maintenance and Repair.....	52
8.	Alarm and Fault Conditions.....	53
9.	Dismantling and Decommissioning	54
10.	Appendix	55
10.1	Programming Worksheet	55
10.2	Type Codes	62

1 Preface

We are pleased that you have chosen a quality product from Pepperl+Fuchs.

This manual will help you meet the safety and protection requirements for installing, commissioning, and using the 6100 purge and pressurization system and its components.

We reserve the right to make technical changes.

Publisher with responsibility for content:

Pepperl+Fuchs SE
Lilienthalstraße 200
68307 Mannheim, Germany

1.1 Information on This Manual

Knowledge of the basic safety regulations and additional training and experience in the area of explosion protection are essential for the safe handling and failure-free operation of the 6100 series purge and pressurization system.

These operating instructions contain important data and information to ensure the safe use of the 6100 system in hazardous areas and to meet the requirements of Directive 2014/34/EU. This manual, particularly the safety information, must be followed by all personnel who work on the system.

1.2 Responsibility of the Operator and/or Installer

The operator and/or installer undertake to ensure that only specialist, trained personnel work on the 6100 series purge and pressurization system and that they

- are familiar with the occupational safety and accident prevention regulations and have been briefed regarding handling of the unit.
- have the additional knowledge of explosion protection that is required for work on explosion protected components.
- are familiar with the relevant rules and regulations for the installation, operation, and maintenance of explosion-protected systems.
- have read the safety section and warnings in this manual.

2 Safety

2.1 Introduction

2.1.1 Contents

This document contains information that you need to use your product throughout the applicable stages of the product life cycle. These can include the following:

- Product identification
- Delivery, transport, and storage
- Mounting and installation
- Commissioning and operation
- Maintenance and repair
- Troubleshooting
- Dismounting and disposal



Warning!

Failure to follow these instructions may impair the safety protection and function of the equipment.



Note!

For complete information on the product, refer to the instruction manual and further documentation at www.pepperl-fuchs.com.

The documentation consists of the following parts:

- Present document
- Instruction manual
- Datasheet

Additionally, the following parts may belong to the documentation, if applicable:

- EU declaration of conformity
- Certificates
- Additional documents

2.1.2 Target Group, Personnel

Responsibility for planning, assembly, commissioning, operation, maintenance, and dismounting lies with the plant operator. In accordance with but not limited to IEC/EN 60079-14, only appropriately trained and qualified personnel may carry out mounting, installation, commissioning, operation, maintenance, and dismounting of the product. National laws and regulations must be observed and take precedence over any aspects of IEC/EN 60079-14. The personnel must have read and understood the instruction manual and any further documentation.

2.1.3 Symbols Used

This document contains symbols for the identification of warning messages and of informative messages.

Warning Messages

You will find warning messages in instances where danger may arise from your actions. You must observe these warning messages for your personal safety and to avoid property damage. Depending on the risk level, the warning messages are displayed in descending order as follows:



Danger!

This symbol indicates an imminent danger.
Non-observance will result in personal injury or death.



Warning!

This symbol indicates a possible fault or danger.
Non-observance may cause personal injury or serious property damage.



Caution!

This symbol indicates a possible fault.
Non-observance could interrupt the device and any connected systems and plants, or result in their complete failure

Informative Symbols



Note!

This symbol brings important information to your attention.



Action

This symbol indicates a paragraph with instructions. You are prompted to perform an action or a sequence of actions.

2.1.4 Pertinent Laws, Standards, Directives, and Further Documentation

NEC, CEC, and other national and local laws, standards, or Directives that are applicable to the intended use and installation location must be observed. In relation to hazardous areas, Directive 2014/34/EC must be observed.

The corresponding datasheets, EU Declaration of Conformity, EU Type Examination Certificates, NEC/NFPA and CEC certificates, and control drawings, if applicable (see datasheet), are an integral part of this document. You can find this information at www.pepperl-fuchs.com.

Due to constant revisions, documentation is always subject to change. Please refer only to the most up-to-date version, which can be found at www.pepperl-fuchs.com.

2.1.5 Declaration of Conformity

All products were developed and manufactured under observance of the applicable European standards and guidelines.



Note!

A declaration of conformity is included with these instructions and can be requested from the manufacturer or obtained online at www.pepperl-fuchs.com.

2.2 Warning Labels



WARNING—FOR PRESSURIZED ENCLOSURES IN HAZARDOUS GAS ENVIRONMENTS

This pressurized enclosure shall not be opened unless the area is known to be free of flammable materials or unless all devices have been de-energized. Power must not be restored after the pressurized enclosure has been opened until the pressurized enclosure is completely purged of all hazardous gas and the enclosure re-pressurized.

2.3 Conditions of Safe Use

Control Unit

1. When the purge control unit is mounted to an enclosure, the complete unit shall be evaluated to the current revision of IEC/EN 60079-2 or NFPA 496 as applicable. See certificates and/or Declaration of Conformity for reference to relevant editions of these standards.
2. The purge control unit has an operating temperature class of 135 °C (T4 temperature class). This temperature shall be considered when mounted to an enclosure.
3. Intrinsically safe cables extending from the enclosure must be provided with at least 0.25 mm insulation thickness per conductive core to maintain segregation between intrinsically safe circuits.
4. The cable entries may be used only in places where they are protected against the influence of mechanical danger.
5. The non-metallic membrane touchpad and display is a potential electrostatic discharge hazard. Use only water damp cloth and allow to air dry for cleaning device. Do not use or install in high charge areas. See IEC 60079-32-1 for further information.
6. In applications where a 6000-TEMP-XX I.S. temperature hub is used, it must be mounted in an enclosure that is at least IP54. Maintain separation of I.S. to non-I.S. wiring as required by local codes.
7. Caution must be used when handling or cleaning products so there is no static charge buildup. Do not wipe off the 6000-TSEN-xx sensor with dry cloth or use in the presence of high charge generating processes such as ionizers or electrostatic equipment. See IEC 60079-32-1 for further information.
8. The 6100 systems may also be provided with previously certified items (operators, cable glands, terminal box, etc.) as specified in the test reports.
9. The equipment shall only be fitted with suitably certified cable entry devices and/or blanking plugs appropriate to the application.
10. The control unit must be mounted via the mounting tabs that are shown in sections 3.4.1 and 3.4.2.

I.S. Termination Board, DIN Mounted: 6000-ISB-xx

1. Only connect to the 6000 EPCU I.S. termination connection.
2. All wiring to and from this board is for intrinsically safe connections and must be properly routed and managed per international, NEC, local codes, and applicable standards.



Note!

The SRM (Sensor Resistor Module) is a simple apparatus that detects breaks or shorts in the wiring. It does not require third-party certification.

EPV-6100 Enclosure Protection Vent

1. The EPV has an operating temperature class of 135 °C (T4 temperature class). This temperature shall be considered when mounted to an enclosure.
2. Cables use to connect the EPV must be provided with at least 0.25 mm insulation thickness per conductive core to maintain segregation between intrinsically safe circuits.
3. Only EPV-6100 vents can be connected to any certified 6100 series control system.
4. The EPV must be mounted via the mounting holes that are shown in chapter 3.4.5.

2.4 General Information on Pressurized Enclosures

The pressurized enclosure is one of the most multifunctional applicable types of protection. It is based on a purge operation that removes potential ignitable gas mixtures of the local environment from the enclosure. After the purge, the overpressure will be maintained by adding as much pressurized air as necessary to compensate for the leaks of the enclosure or components. This constant state of overpressure protects against the diffusion of potentially explosive atmospheres.

During normal operation (motor running) the vent plunger will be closed and the internal pressure will be lower than the breaking pressure of the vent used. At the start of the purge phase, the internal pressure of the enclosure will increase slightly above the breaking pressure of the vent. After the plunger opens during the purge phase, the internal pressure drops, depending on the vent's flow requirements. See Purge Pressure and Flow Rate Table.

Hot spots at single components inside the enclosure are monitored by temperature sensors (optional) and if required turned off. This assures that no unacceptable surface temperature will occur. For this reason, the pressurized enclosure is especially suited for the use of non-Ex certified equipment in Ex areas.

Enclosure has to be prepared specially for the use of Ex p:

- All walls have to be additionally armed
- The doors must be specially constructed
- Tested for mechanical stability
- Tested for overpressure resistance



Danger!

When using an inert gas like nitrogen, an asphyxiation hazard can exist.

3 Product Description

3.1 Overview

The purpose of the Pepperl+Fuchs Bebcos EPS 6100 series Ex pxb, Zone 1 large enclosure / motor purge and pressurization system is to allow general purpose or non-rated electrical equipment located in a general purpose enclosure to operate in Zone 1 locations. Other purposes of the 6100 series system include heat, moisture, and dust contamination prevention.

The 6100 series system operates by controlling and monitoring compressed instrument air or inert gas through the protected enclosure/motor so as to remove and prevent the accumulation of flammable gas. The system consists of the following parts:

- The 6100-MP-EX-* control unit houses the controller and the pneumatics for purging/pressurization and monitors these actions.
- The 6100-MP-LPP-01 pressure sensor is usually mounted at the lowest pressure section of the motor and feeds back the pressure to the controller. This pressure will determine if the enclosure is operating at a safe pressure and will indicate the enclosure/motor pressure through the controller's user-interface controller (UIC).
- The EPV-6100-MP-* enclosure protection vent purges and maintains pressure within the enclosure/motor. There is a pressure switch that detects orifice pressure/flow back to the controller, which indicates if the correct flow is measured for purging. There are several vent options for different flow rates.
- The optional 6000-TEMP-01 temperature hub and 6000-TSEN-01 temperature sensor are used to monitor temperatures within the enclosure/motor. This signal runs back to the controller and can be used to start the purging valve for cooling or take action through various means.

The controller's UIC allows programming of up to 2 switch inputs, temperature modules, enclosure power contacts, 1 auxiliary output, and various user-configured functions. Through the user-interface menus, configuration of the system for purge time, flow rates, monitoring and shut-off pressures, and enclosure size are easily programmed for a fully automated system. Additional features allow inputs for system bypass, enclosure power on/off, temperature monitoring for activation of the purging valve for cooling or auxiliary relay for separated cooling or alarm, delay power shutdown, and more. The auxiliary output can be configured to activate on input switch status, or any alarm states of pressure, flow, and temperature.

The 6100 system uses many components of the Pepperl+Fuchs Bebcos EPS 6000 series purge and pressurization system and can provide a complete system for purging and pressurizing enclosure/motors for hazardous location operation.

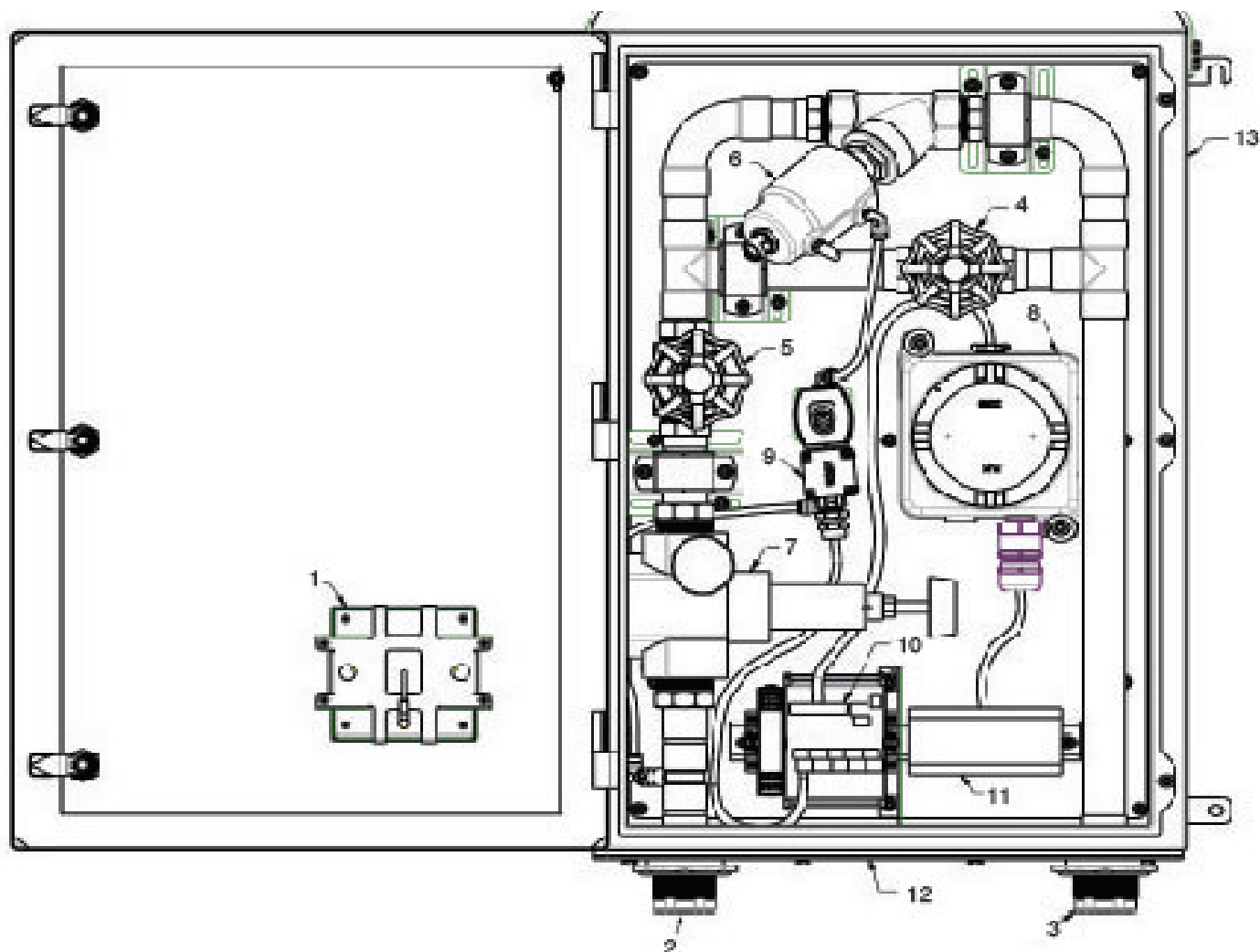


Note!

One operations copy of this manual must be studied and retained by the system operator in addition to one permanent file copy. User's agents are responsible for transferring this manual to the user/operator prior to start-up.

3.2 System Components

3.2.1 6100-MP-EX-* Control Unit (Standard Temperature)

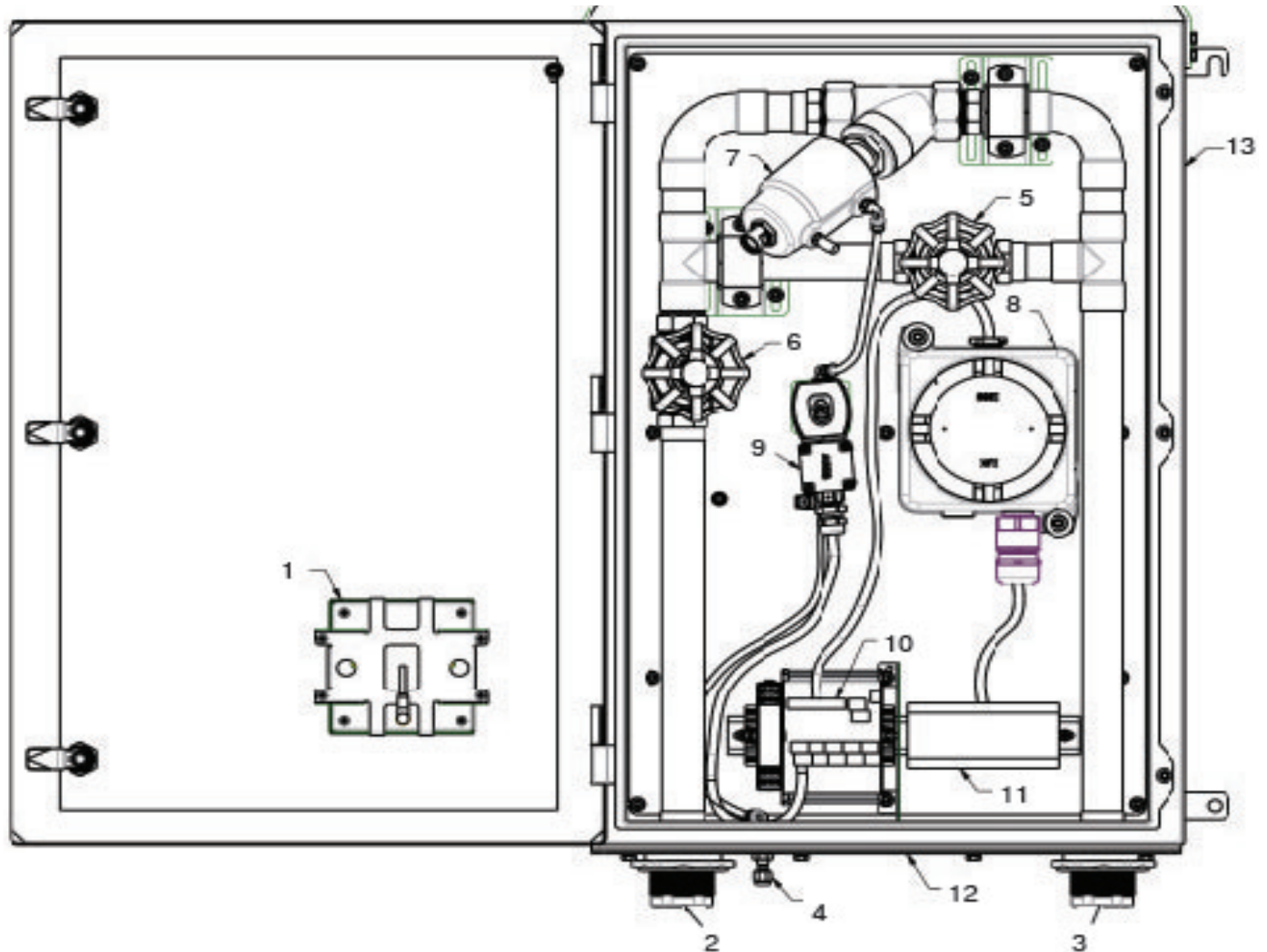


Control Unit (Standard Temperature)

- 1 User-Interface Controller (UIC)*
- 2 Inlet for purge gas supply—1¼" FNPT
- 3 Outlet for purge gas supply into enclosure—1¼" FNPT
- 4 Manual gate valve for pressurization
- 5 Manual gate valve for regulation
- 6 Angle seat valve
- 7 Regulator for purge gas supply
- 8 Enclosure Protection Control Unit (EPCU)
- 9 Intrinsically safe pilot valve for actuation of purging valve
- 10 Intrinsically safe termination board
- 11 Power terminals
- 12 Gland plate for cable glands
- 13 6100-MP-EX-* control unit

***User-Interface Controller (UIC):** For models designated 6100-MP-EX-XX-02-XXX, the UIC is mounted remotely, not as shown in this diagram. In that situation, the opening in the cabinet door is covered with a square panel.

3.2.2 6100-MP-EX-* Control Unit (No Regulator)



Control Unit (No Regulator)

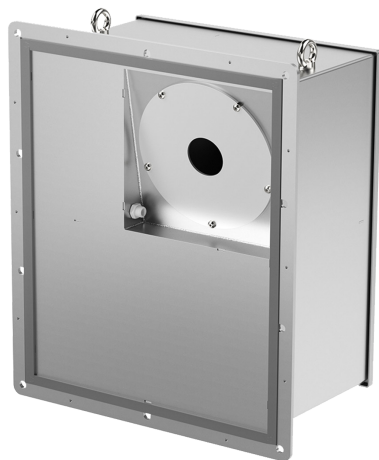
- 1 User-Interface Controller (UIC)*
- 2 Inlet for purge gas supply—1¼" FNPT
- 3 Outlet for purge gas supply into enclosure—1¼" FNPT
- 4 I. S. pilot valve supply port 1/4" tube compression fitting
- 5 Manual gate valve for pressurization
- 6 Manual gate valve for regulation
- 7 Angle seat valve
- 8 Enclosure Protection Control Unit (EPCU)
- 9 Intrinsically safe pilot valve for actuation of purging valve
- 10 Intrinsically safe termination board
- 11 Power terminals
- 12 Gland plate for cable glands
- 13 6100-MP-EX-* control unit

***User-Interface Controller (UIC):** For models designated 6100-MP-EX-XX-02-XXX, the UIC is mounted remotely, not as shown in this diagram. In that situation, the opening in the cabinet door is covered with a square panel.

3.2.3 6100-MP-LPP-* Pressure Sensor



3.2.4 EPV-6100-MP-* Enclosure Protection Vent



3.2.5 Temperature Monitoring/Control Accessories



6000-TEMP-01
Intrinsically safe temperature hub



6000-TSEN-01
Intrinsically safe temperature sensor


3.3 Technical Data

3.3.1 6100-MP-EX-* Control Unit

General specifications	
Operating mode	manual, semi-automatic, or fully automatic - programmable
Series	6100 series
Number of volume exchanges	4 to 19
Hazardous environment	gas
Supply	
Rated voltage U_r	100 ... 250 V AC $\pm 10\%$; 48 ... 62 Hz / 0.2 A 20 ... 30 V DC $\pm 10\%$; 0.6 A Overvoltage category II
Electrical specifications	
Connection	
Power	Ex e terminal blocks
Connection	6000-ISB DIN mounted terminal
Input*	
Input type	IS 1: Dedicated for 6000-TEMP-01 (optional) IS 2: Dedicated for 6100-MP-LPP Input 1: Dry contact or SRM, discrete input, intrinsically safe Input 2: Dry contact or SRM, discrete input, intrinsically safe Input 3: Dedicated for EPV-6100-MP, flow signal Input 4: Dedicated high pressure switch, max pressure signal (optional)
Output	
Output I	AUX 1: Dedicated blower output
Output type	Dry contacts, SPDT
Inrush current	5 A
Contact loading	2 A at 240 V AC resistive load 2 A at 24 V DC
Output II	AUX 2
Output type	Dry contacts, SPDT
Inrush current	5 A
Contact loading	2 A at 240 V AC resistive load 2 A at 24 V DC
Output III	enclosure 1 and 2
Output type	Dry contacts (2) SPST, NO
Inrush current	72 A
Contact loading	8 A at 240 V AC / 120 V AC resistive load 8 A at 24 V DC
Indicators/settings	
LED indication	Safe pressure: Blue - safe pressure is achieved Enclosure power: Green - power on; Red - power off Rapid exchange: Blue - purging is running System bypass: Yellow - bypass is activated Alarm fault: Red (blinking) - any alarm input detected; Red (solid) - fault


* **Warning:** Inputs 1, 2, 3, and 4 must be used with the SRM-6000 for tested EMC immunity.

Pneumatic parameters	
Protective gas supply	Clean, regulated air or inert gas
Pressure requirement	regulated side: 1.4 ... 8.3 bar (20 ... 120 psig) unregulated side: 4.1 ... 8.3 bar (60 ... 120 psig)
Safe pressure	0.625 mbar (0.25 in wc) minimum for 6100-MP-LPP-*
Purge flow and enclosure pressure rate	2000 l/m ... 14000 l/m see EPV-6100 datasheet for flow rate steps
Valve flows	pressurization valve: manual gate valve purging valve: pilot drive angle seat valve pilot valve: intrinsically safe solenoid valve
Directive conformity	
Electromagnetic compatibility	
Directive 2014/30/EU	EN 61326-1:2013
RoHS	
Directive 2011/65/EU (RoHS)	EN IEC 63000:2018
Ambient conditions	
Ambient temperature	0 ... 60 °C (-32 ... 140 °F) Standard version -20 ... 60 °C (-4 ... 140 °F) Low temp version, no regulator version
Storage temperature	0 ... 80 °C (-32 ... 176 °F) Standard version -20 ... 80 °C (-4 ... 176 °F) Low temp version, no regulator version
Relative humidity	5 ... 95 %, noncondensing
Altitude	max. 2000 m
Vibration resistance	EN 60068-2-6
Impact resistance	EN 60068-2-27
Mechanical specifications	
Connection type	Terminals
Cable entry	3 x M16 holes, plugs that are included are not hazardous-location rated 4 x M20 holes, plugs that are included are not hazardous-location rated
Degree of protection	IP66 (Device is protected against dust and strong jets of water.)
Pollution degree	Device can be installed in environments up to pollution degree 4.
Material	inlet and outlet: 1¼ inch NPTF, 316 stainless steel internal piping: copper bulkhead fittings: 316 stainless steel (no regulator model only) gate valve: bronze, Grafoil seals purging valve: 316 stainless steel, PTFE seals solenoid valve: brass housing: 316L stainless steel regulator: zinc (standard temp); aluminum (low temp); N/A (no regulator) filter (pneumatic): aluminum tubing (pneumatic): nylon fittings (pneumatic): nickel-plated brass
Mass	47.2 kg (104 lbs)
Dimensions	216 mm x 508 mm x 770 mm (8.5" x 20" x 30.3")
Torque requirements	
Terminal blocks	0.5 ... 0.6 Nm
IS Board	0.5 ... 0.6 Nm
1¼" NPT Inlet/Outlet	1.5–2.5 turns past finger tight (Do not overtighten!)

Compression fitting tube end (No regulator model only)	1¼ turns past finger tight
M10 earth ground	10 Nm
M10 mounting screw	15 Nm
Data for application in connection with hazardous areas	
Certificate	CML 19 ATEX 1425X
Marking	 II2G Ex db eb ib [ib Gb][pxb Gb] IIC T4 Gb
Directive conformity	
Directive 2014/34/EU	EN IEC 60079-0:2018 EN 60079-1:2014 EN 60079-2:2014 EN 60079-7:2015 + A1:2018 EN 60079-11:2012
International approvals	
IECEX approval	IECEX CML 19.0156X Ex db eb ib [ib Gb][pxb Gb] IIC T4 Gb
General information	
Supplementary information	EC-Type Examination Certificate, Statement of Conformity, Declaration of Conformity, Attestation of Conformity and instructions have to be observed where applicable. For information see www.pepperl-fuchs.com . Supplemental Standards : EN 61010-1:2010

3.3.2 6100-MP-LPP-* Pressure Sensor

General specifications	
Series	6100 series
Hazardous environment	gas
Electrical specifications	
Connection	
Power	Intrinsically safe connection to the 6100 control unit
Signal	Bus to 6100 control unit
Connection	M12 connector, 4-pin, max length 30 m
Indicators/settings	
LED indication	power: green
Pneumatic parameters	
Maximum pressure	0 ... 50 mbar (0 ... 20.1 in wc) pressure range
Directive conformity	
Electromagnetic compatibility	
Directive 2014/30/EU	EN 61326-1:2013
RoHS	
Directive 2011/65/EU (RoHS)	EN IEC 63000:2018
Ambient conditions	
Ambient temperature	0 ... 60 °C (-32 ... 140 °F) Standard version -20 ... 60 °C (-4 ... 140 °F) Low temp version, no regulator version
Storage temperature	0 ... 80 °C (-32 ... 176 °F) Standard version -20 ... 80 °C (-4 ... 176 °F) Low temp version, no regulator version
Relative humidity	5 ... 95 % noncondensing
Vibration resistance	10 ... 100 Hz, 1g, 12 m², all axes
Impact resistance	30 g, 11 ms, all axes
Mechanical specifications	
Material	5052 anodized aluminum, 6061T6 anodized aluminum

Installation	- any orientation to enclosure - not gravity dependent
Mass	approx. 0.5 kg (1.1 lb)
Dimensions	57.2 mm x 81.1 mm x 82.6 mm (2.3" x 3.2" x 3.3")
Torque requirements	
Sealing washer & nut	0.25–1 turn past finger tight (Do not overtighten!)
Mounting	1½" NPT knockout (50.8 mm (2") hole) with sealing washer and nut
Data for application in connection with hazardous areas	
Certificate	CML 19 ATEX 1425X
Marking	 II2G Ex db eb ib [ib Gb][pxb Gb] IIC T4 Gb
Directive conformity	
Directive 2014/34/EU	EN IEC 60079-0:2018 EN 60079-1:2014 EN 60079-2:2014 EN 60079-7:2015 + A1:2018 EN 60079-11:2012
International approvals	
IECEx approval	IECEx CML 19.0156X Ex db eb ib [ib Gb][pxb Gb] IIC T4 Gb
General information	
Supplementary information	EC-Type Examination Certificate, Statement of Conformity, Declaration of Conformity, Attestation of Conformity and instructions have to be observed where applicable. For information see www.pepperl-fuchs.com . Supplemental Standards : EN 61010-1:2010

3.3.3 EPV-6100-MP-* Enclosure Protection Vent

General specifications	
Series	6100 series
Hazardous environment	gas
Electrical specifications	
Connection	
Power	Intrinsically safe connection to the 6100 control unit
Signal	2-wire intrinsically safe pressure switch
Connection	2-wire
Pneumatic parameters	
Safe pressure	0.625 mbar (0.25 in wc)
Enclosure pressure	0 ... 50 mbar (0 ... 20.1 in wc)
Purge flow rate and enclosure pressure	See "Purge Pressure & Flow Rate Table" (page 18) for purge flow rate and enclosure pressure values.
Flow rate for leakage compensation	Varies depending on enclosure seal.
Breaking pressure	See "Purge Pressure & Flow Rate Table" (page 18) for breaking pressure values.
Mechanical specifications	
Material	316L stainless steel

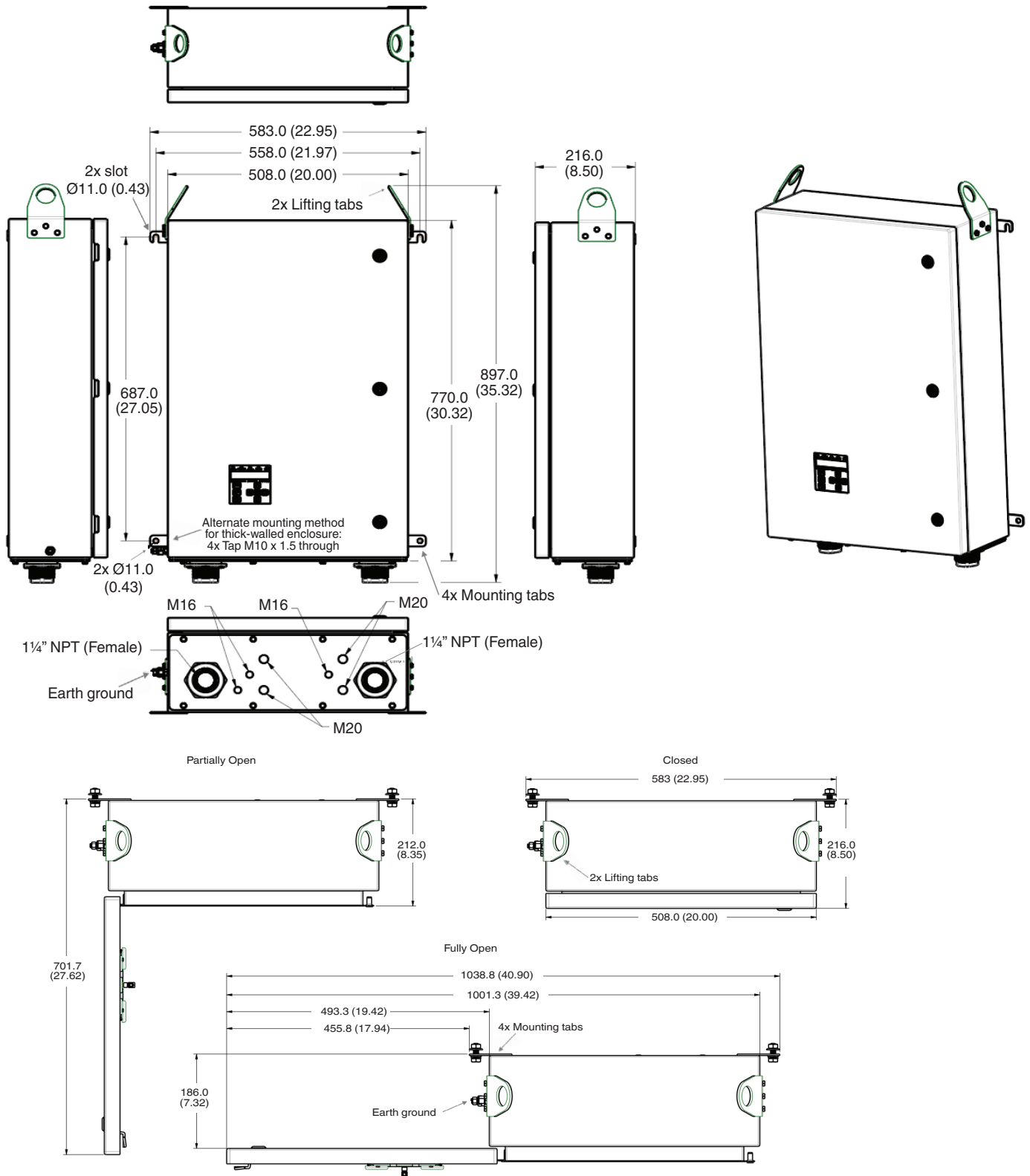
Purge Pressure & Flow Rate Table

Model #		EPV-6100-MP-020-XXX		EPV-6100-MP-050-XXX		EPV-6100-MP-080-XXX		EPV-6100-MP-110-XXX		EPV-6100-MP-140-XXX	
Purge Flow		(2000)		(5000)		(8000)		(11000)		(14000)	
Model #	Breaking Pressure (mbar)	Purge Pressure (mbar)	Peak Pressure of Enclosure (mbar)	Purge Pressure (mbar)	Peak Pressure of Enclosure (mbar)	Purge Pressure (mbar)	Peak Pressure of Enclosure (mbar)	Purge Pressure (mbar)	Peak Pressure of Enclosure (mbar)	Purge Pressure (mbar)	Peak Pressure of Enclosure (mbar)
EPV-6100-MP-XXX-010	10	11.6	12.5	11.9	12.5	14.8	15.5	14.2	15.0	14.0	14.5
EPV-6100-MP-XXX-025	25	30.0	36.5	32.9	35.5	25.2	32.5	25.6	30.0	23.5	30.0
EPV-6100-MP-XXX-030	30	37.3	40.0	37.3	40.0	33.1	40.0	31.9	40.0	25.3	40.0
EPV-6100-MP-XXX-040	40	42.7	47.5	43.8	47.5	35.9	47.5	28.2	47.5	25.1	47.5
EPV-6100-MP-XXX-050	50	47.3	53.0	49.6	53.0	41.9	53.0	30.8	53.0	28.6	53.0

Note: Breaking and purge pressures shown above are approximate values.

3.4 Dimensions

3.4.1 6100-MP-EX-* Control Unit

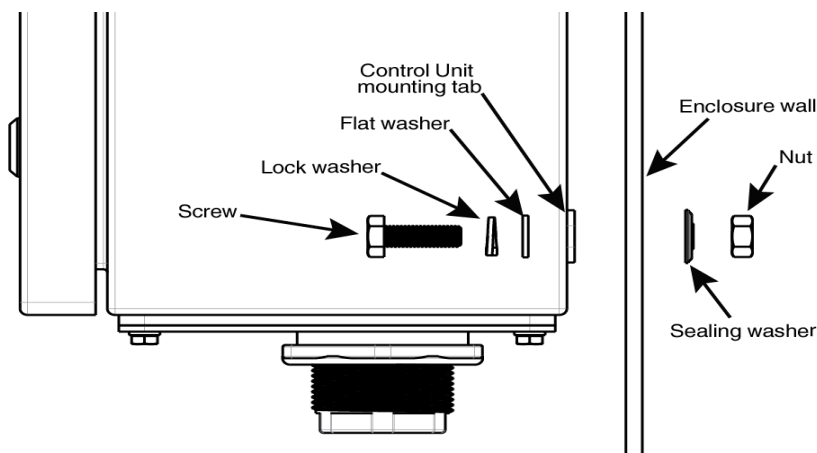


Note!

The purge controller is equipped with a stud for equipotential bonding.

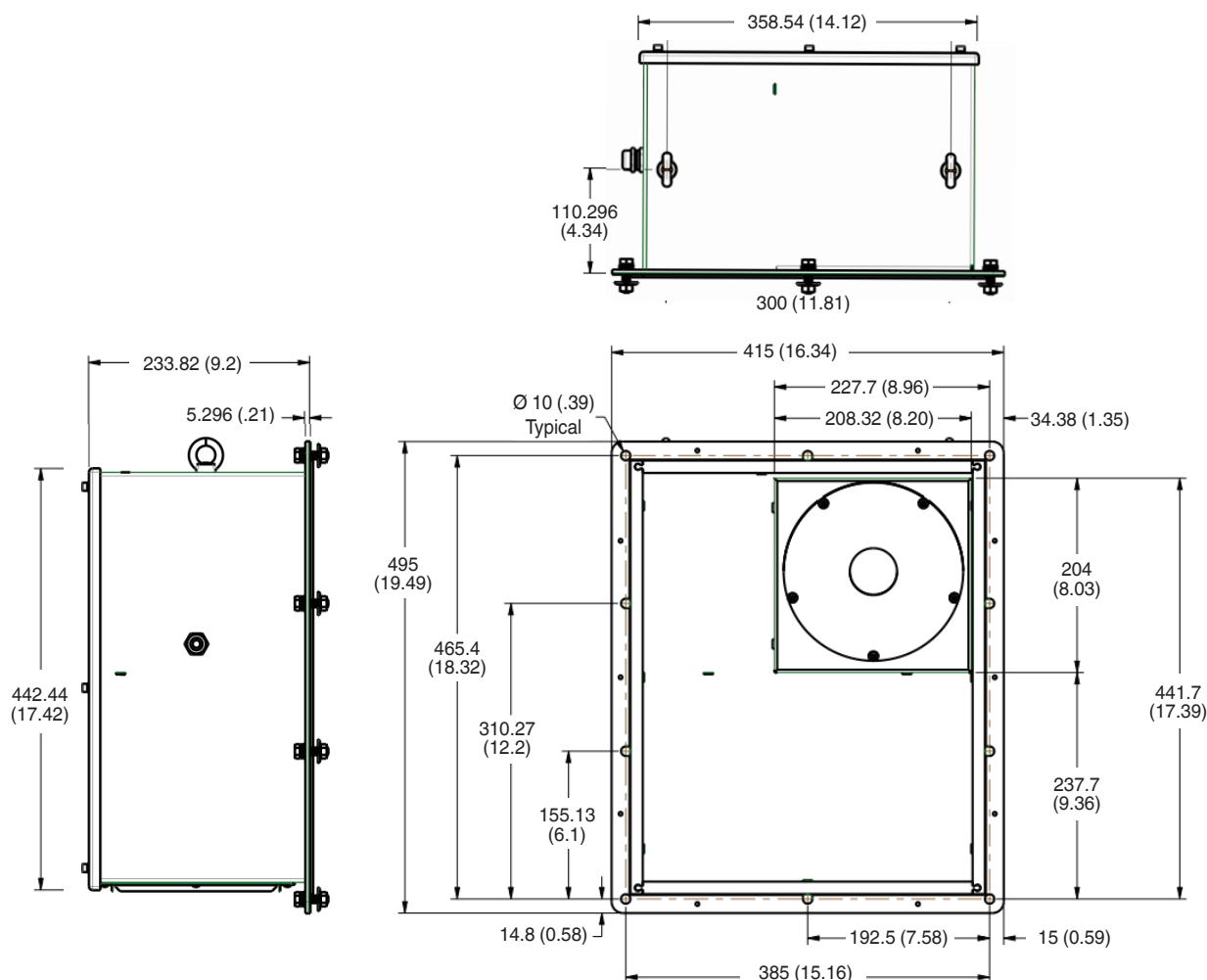


3.4.2 Mounting the Control Unit

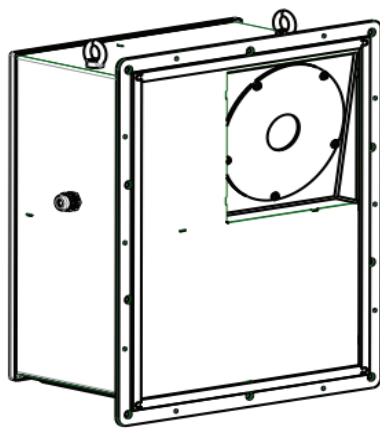
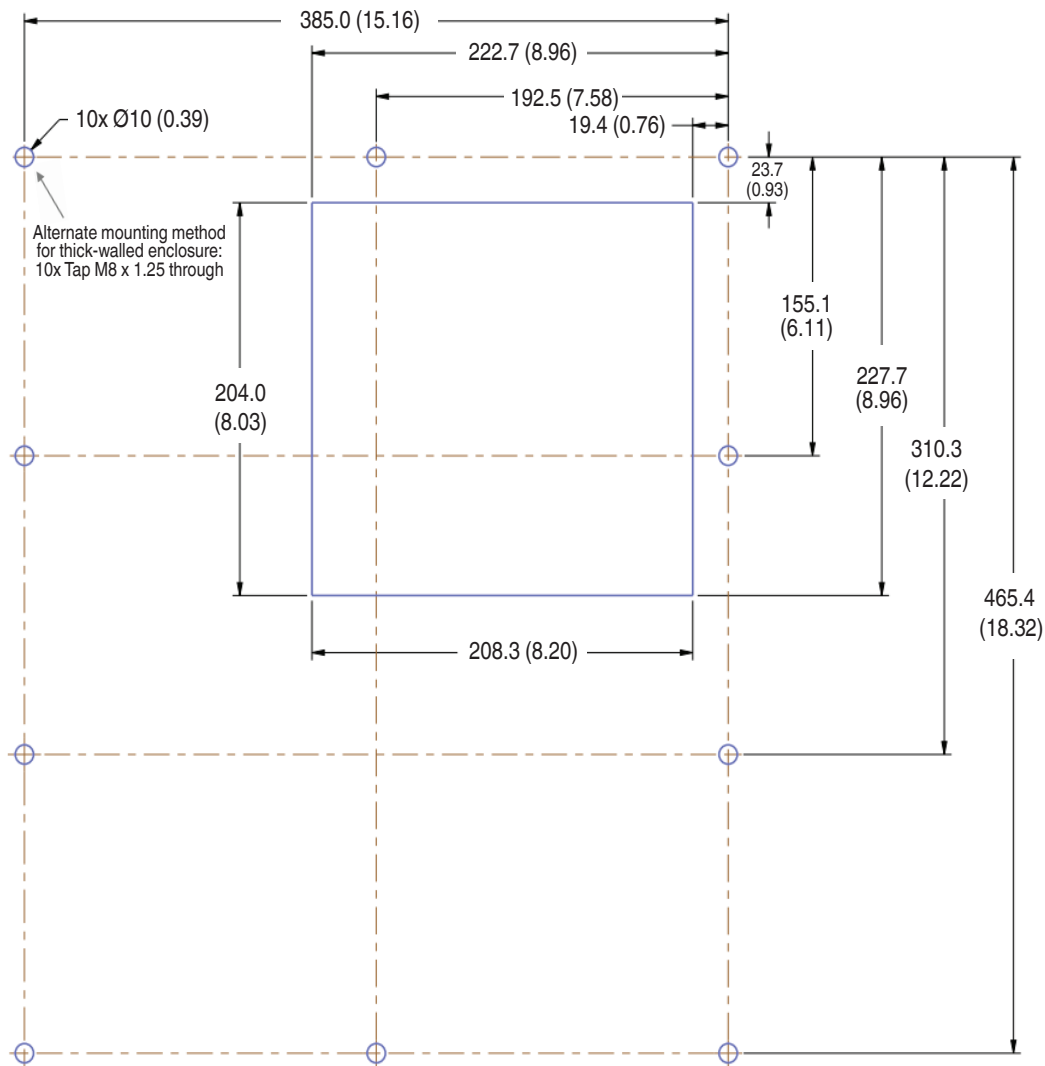


Hardware required for M10 mounting holes: Screw, lock washer, flat washer, sealing washer, and nut
Sealing washer and nut are not used for mounting to thick-walled enclosure (wall thickness > 8 mm (5/16 in.)).

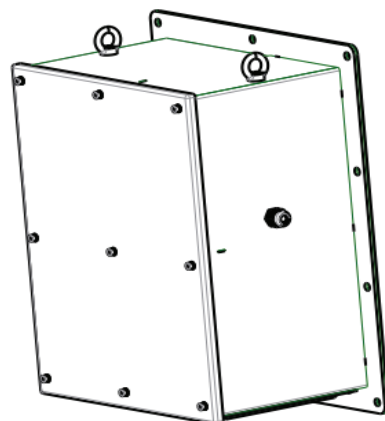
3.4.3 EPV-6100-MP-* Vent



3.4.4 EPV-6100-MP-* Vent, Cutout Dimensions

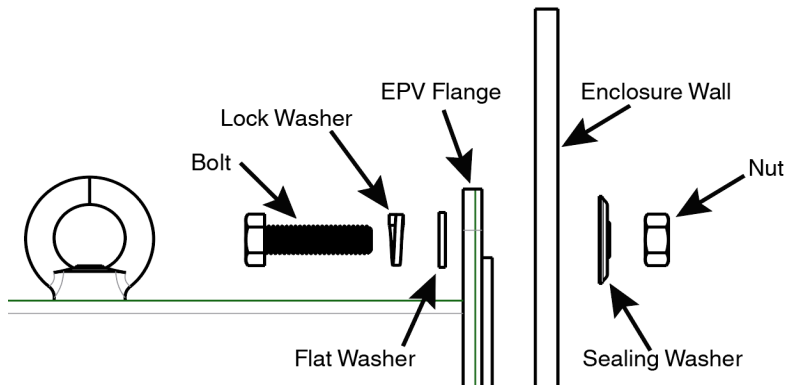


3:20



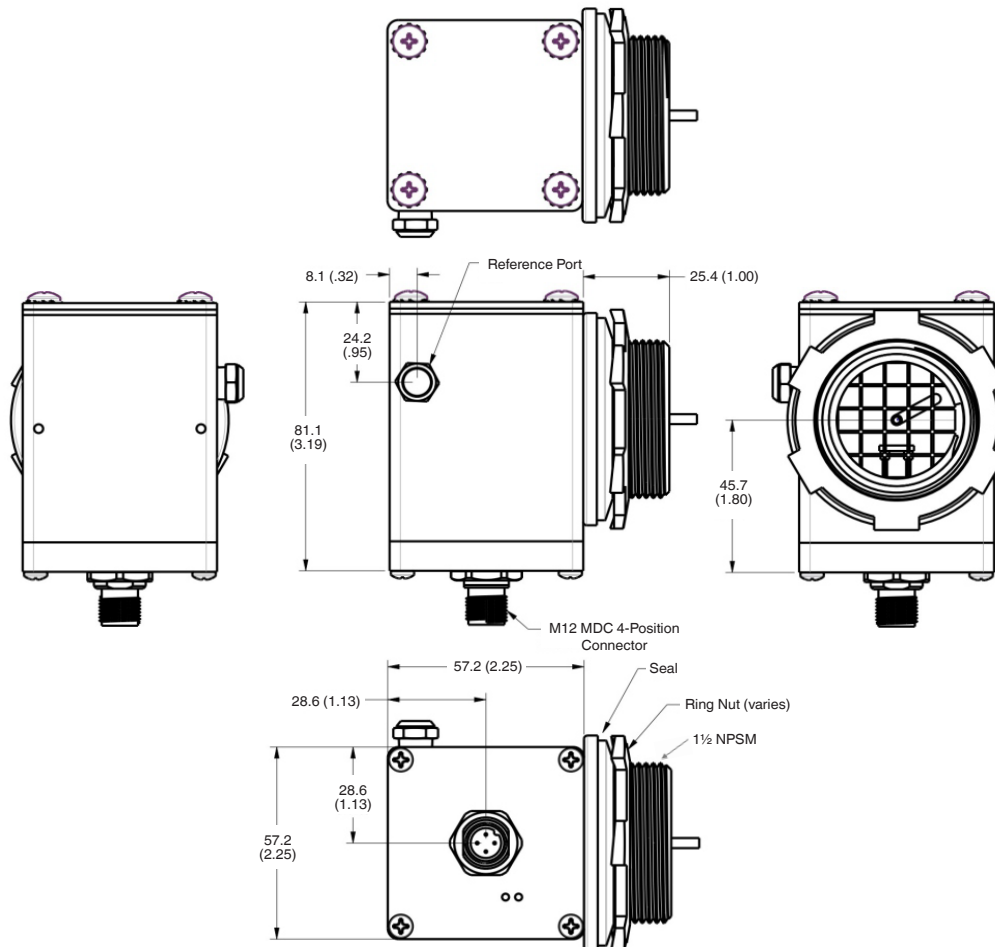
3:20

3.4.5 Mounting the EPV

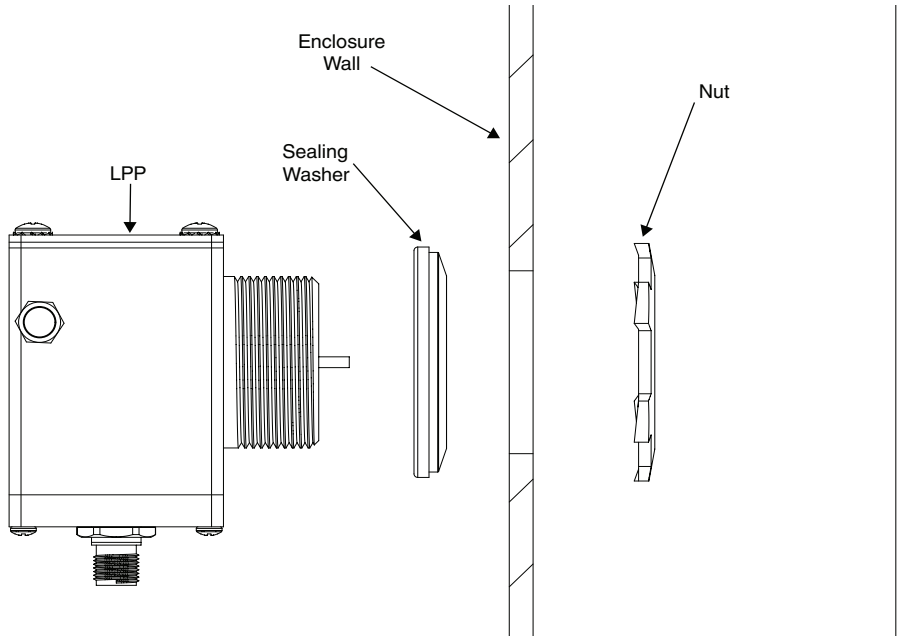


Hardware required for M8 mounting holes: Screw, lock washer, flat washer, sealing washer, and nut
Sealing washer and nut are not used when mounting to thick-walled enclosure (wall thickness > 8 mm (5/16 in.)).

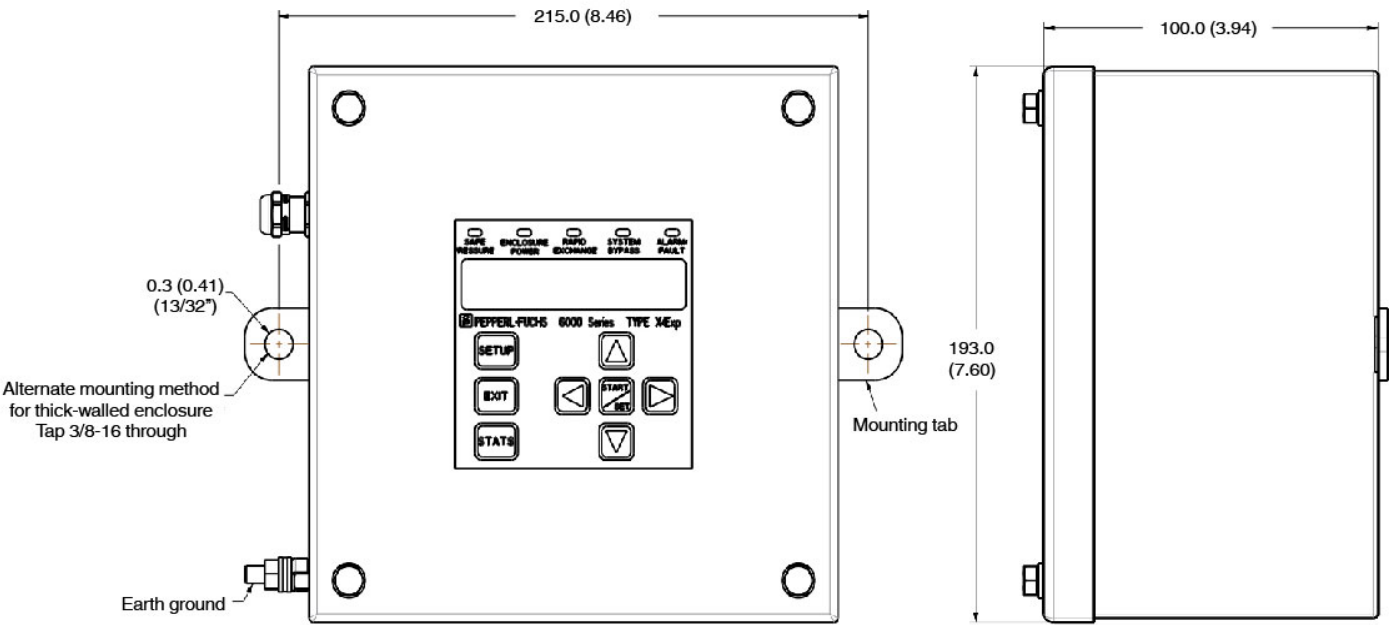
3.4.6 6100-MP-LPP-* Pressure Sensor



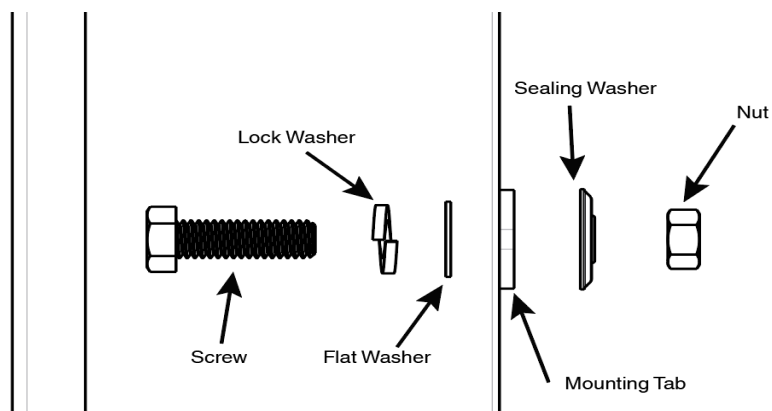
3.4.7 Mounting the LPP



3.4.8 Remote-Mount UIC Dimensions



3.4.9 Mounting the Remote UIC

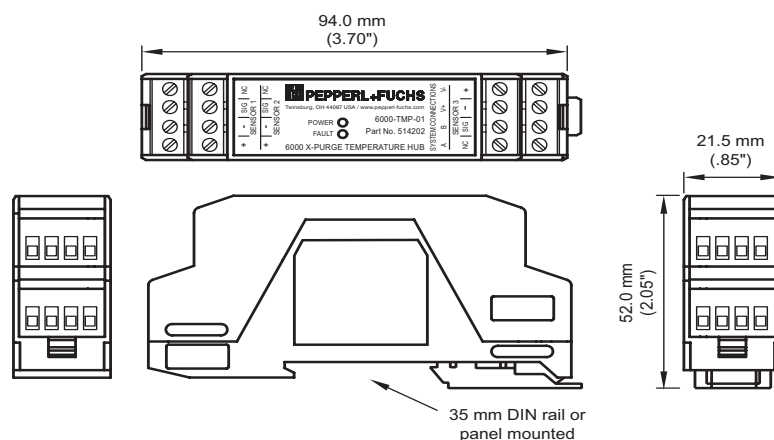


i Hardware required for 2x Ø10.3 (0.41 in. (13/32 in.)) mounting holes:

Screw, lock washer, flat washer, sealing washer, and nut

Sealing washer and nut are not used when mounting to thick-walled enclosure (wall thickness > 8 mm (5/16 in.)).

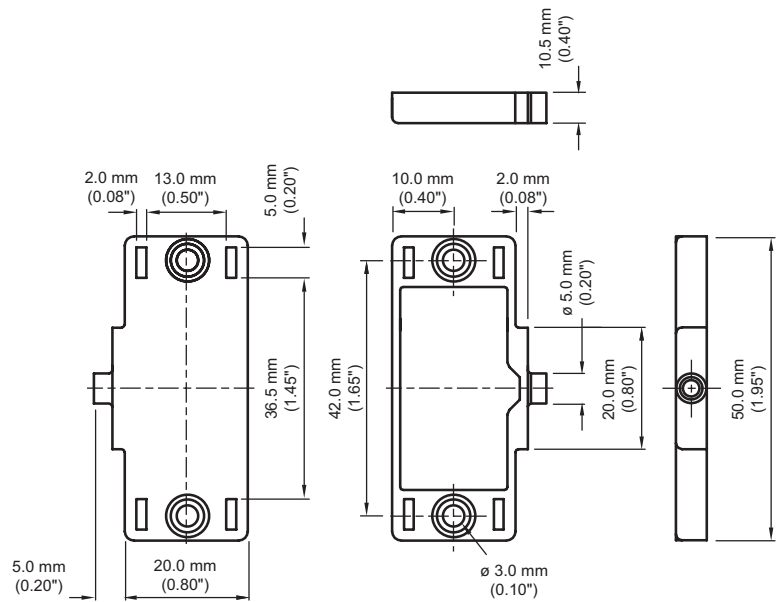
3.4.10 6000-TEMP-01 Temperature Hub



3.4.11 Torque Requirements, 6000-TEMP-01

Hardware	Torque
Terminal blocks	0.5–0.6 Nm

3.4.12 6000-TSEN-01 Temperature Sensor



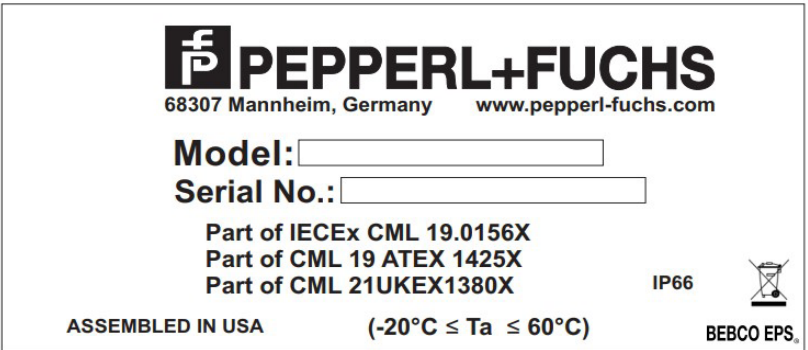
Note!
6000-TSEN-01 must be used with the 6000-TEMP-01 temperature hub.

3.5 Labels and Markings

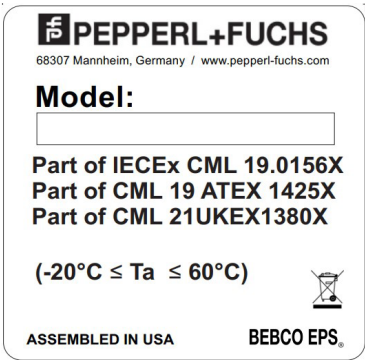
Control Unit label



Vent Label



LPP Label



4 Electrical Installation

4.1 General Wiring Notes

For Power Connections to the 6100 Control Unit and Relay Contacts:

1. All applicable local and national wiring codes **MUST** be followed when wiring to the unit.
2. Wire should be copper only, rated 90 °C minimum. Minimum of 0.25 mm wire insulation thickness required.
3. Ensure that electrical, mechanical, and pneumatic connections and requirements are met to operate this system. Refer to this manual and applicable standards/codes, including current edition of the EN/IEC 60079-14. Electrical supply to the purge system shall be supplied through a switch or circuit breaker and suitably located and easily reached and must be marked as the disconnect for the equipment.
4. Power must be removed from the system when the Ex d enclosure cover is off or if the Ex e power terminal cover is removed, unless the area is known to be non-hazardous.



Danger!

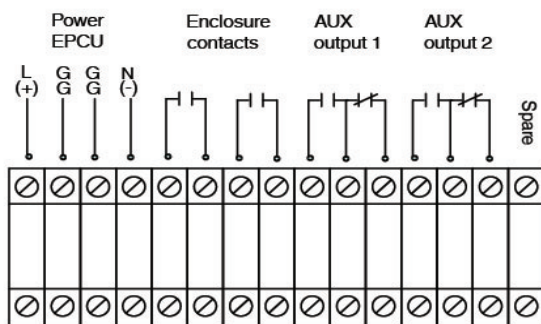
To prevent ignition of the flammable atmospheres, the wiring method must ensure that if any wire is disconnected and extended to the opposite terminal, a 2-inch separation must be maintained.

For Wires Going to the DIN-Rail-Mount I.S. Board in the 6100 Control Unit:

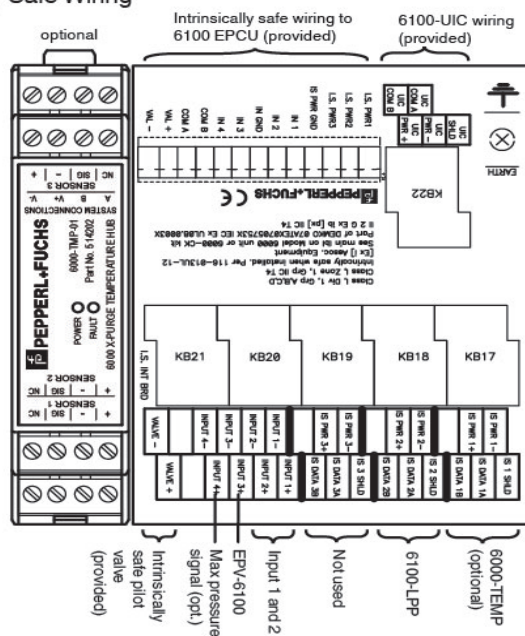
1. The only terminals that might have multiple connections are the shield connections. These must be crimped to a single pin before connection to the board.
2. If cables are used (recommended for connections to the vents and UIC), it is recommended that the cables be shielded.
3. The wires must have a minimum insulation thickness of 0.25 mm (0.01").
4. Wire should be copper only, rated 90 °C minimum.
5. The minimum wire strand in a stranded wire should have a diameter of 0.1 mm or greater.

4.2 Power and Intrinsically Safe Wiring

Power / Auxiliary Wiring



Intrinsically Safe Wiring



Connector color code for the user interface, temperature module, and LPP

PWR +	BN (brown)
PWR -	BU (blue)
DATA_A	WH (white)
DATA_B	BK (black)

Caution!

Maintain a minimum space of 50.8 mm (2 ") between the I.S. wiring and the non-I.S. wiring. Make sure that the wiring is neatly tucked into the explosionproof housing. Use wire ties if necessary. As a rule, no wires are to be in the area between the two terminals.

Note!

When removing the terminal block from the EPCU stack, place your hand on the top of the plastic to support the stack when lifting the terminal block off the stack.

Note!

The EPCU is prewired to the I.S. terminal board.

Note!

Both enclosure power contacts are switched at the same time.

4.3 Wiring Parameters

Intrinsically safe wiring terminals, internal to enclosure	solid min: 0.2 mm ² solid max: 4 mm ² stranded min: 0.25 mm ² stranded max: 2.5 mm ² stranded with ferrule without plastic sleeve min: 0.2 mm ² stranded with ferrule without plastic sleeve max: 1.5 mm ² stranded with ferrule with plastic sleeve min: 0.25 mm ² stranded with ferrule with plastic sleeve max: 2.5 mm ² AWG min: 30 AWG max: 12 torque: 0.5 Nm ... 0.6 Nm stripping length: 7 mm
Ex e terminals, internal to enclosure	rated cross section: 2.5 mm ² / AWG 14 connection capacity rigid: 0.14 mm ² ... 4 mm ² / AWG 26-12 connection capacity flexible: 0.14 mm ² ... 2.5 mm ² / AWG 26-14 2 conductors with same cross section, rigid: 0.14 mm ² ... 1.5 mm ² / AWG 26-16 2 conductors with same cross section, flexible: 0.14 mm ² ... 1.5 mm ² / AWG 26-16 stripping length: 9 mm torque: 0.5 Nm ... 0.6 Nm

5 Pneumatic Requirements

5.1 Protective Gas Supply

The protective gas supply to the enclosure system must be a clean quality compressed air or inert gas.

The protective gas supply compressor intake must originate in a nonhazardous location. The suction duct passing through a hazardous location and the protective tubing and piping must be fabricated from noncombustible material suitable for the prevailing hazardous and environmental conditions.

The protective gas supply provided must be able to handle the flow and pressure requirements for purging and pressurization. The published flow for purging will require more flow due to leakages in the enclosure and safety factors added to the measurement.

5.2 Pneumatic Connections

The 6100 series system requires three or four pneumatic connections from the user.

The connections for the protective gas are made on bottom of the 6100 control unit and have an inlet and outlet, 1 ¼ inch FNPT fittings.

The EPV-6100 vent has to be mounted to the enclosure, and a specified opening for the flow of purge gas from the enclosure through the vent is required. See mounting dimensions for the EPV-6100 vent.

For the no-regulator option, the pilot valve that is inside the 6100 control unit has a ¼" compression fitting on bottom of the enclosure for connection to a supply line. The minimum pressure requirement is 65 psig. This connection should be upstream from the regulator for the purge gas supply, since the purge gas supply regulator can be adjusted for correct flow for purging and pressurization.



Note!

Pressure for the intrinsically safe pilot valve to actuate the purging valve requires a minimum of 65 psig, and the purging and pressurization system can be adjusted below 65 psig. Note that if this is the case, the pilot valve air supply should be upstream of the regulated supply for the purging and pressurization and requires a minimum of 65 psig.

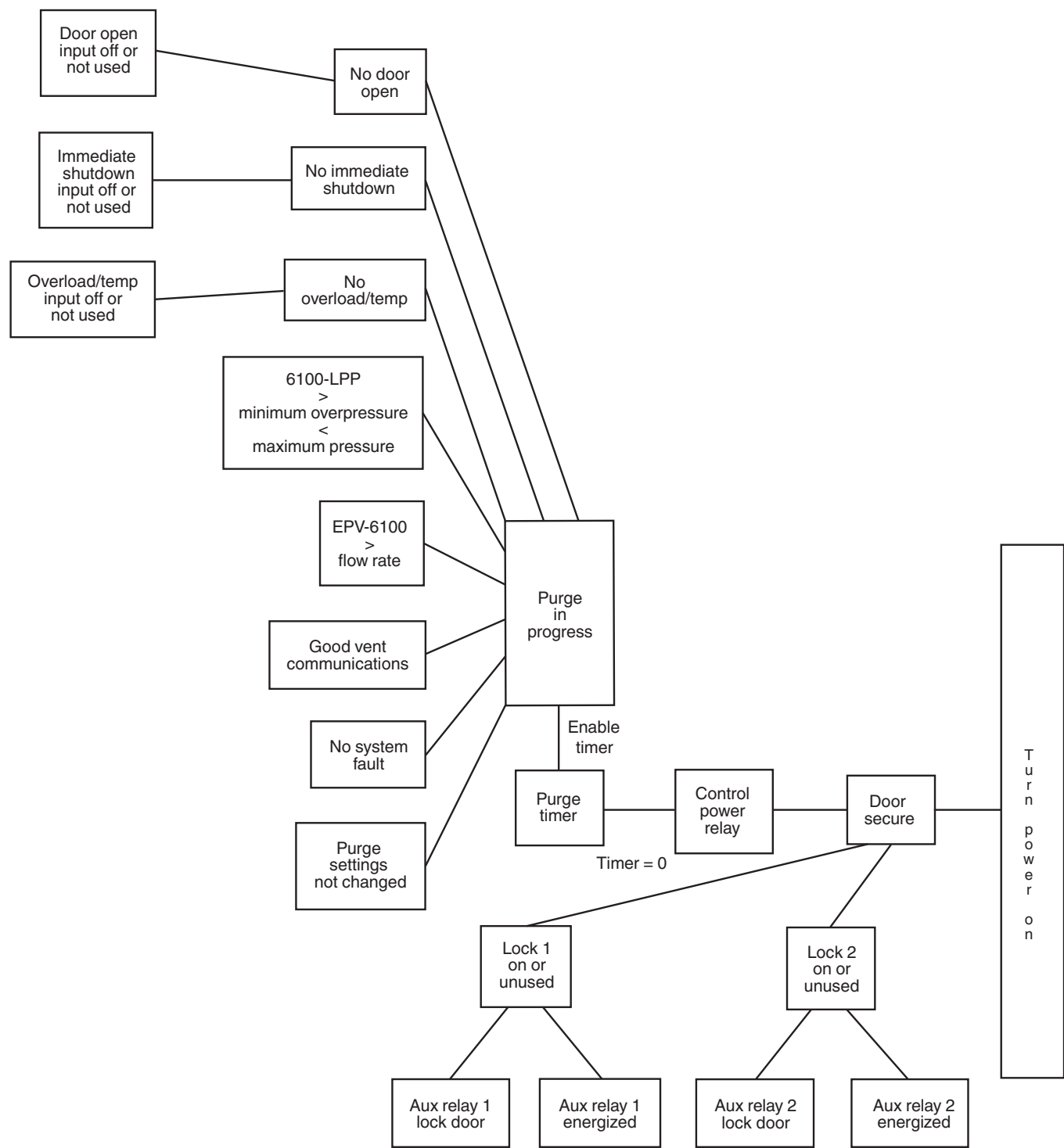
5.3 Pressurization Adjustment

To adjust the pressurization, rotate the gate valve counter-clockwise to open the valve. Before adjusting flow, make sure the control unit is on and the user-interface is reading pressure, or have a pressure gauge on the enclosure to read enclosure pressure.

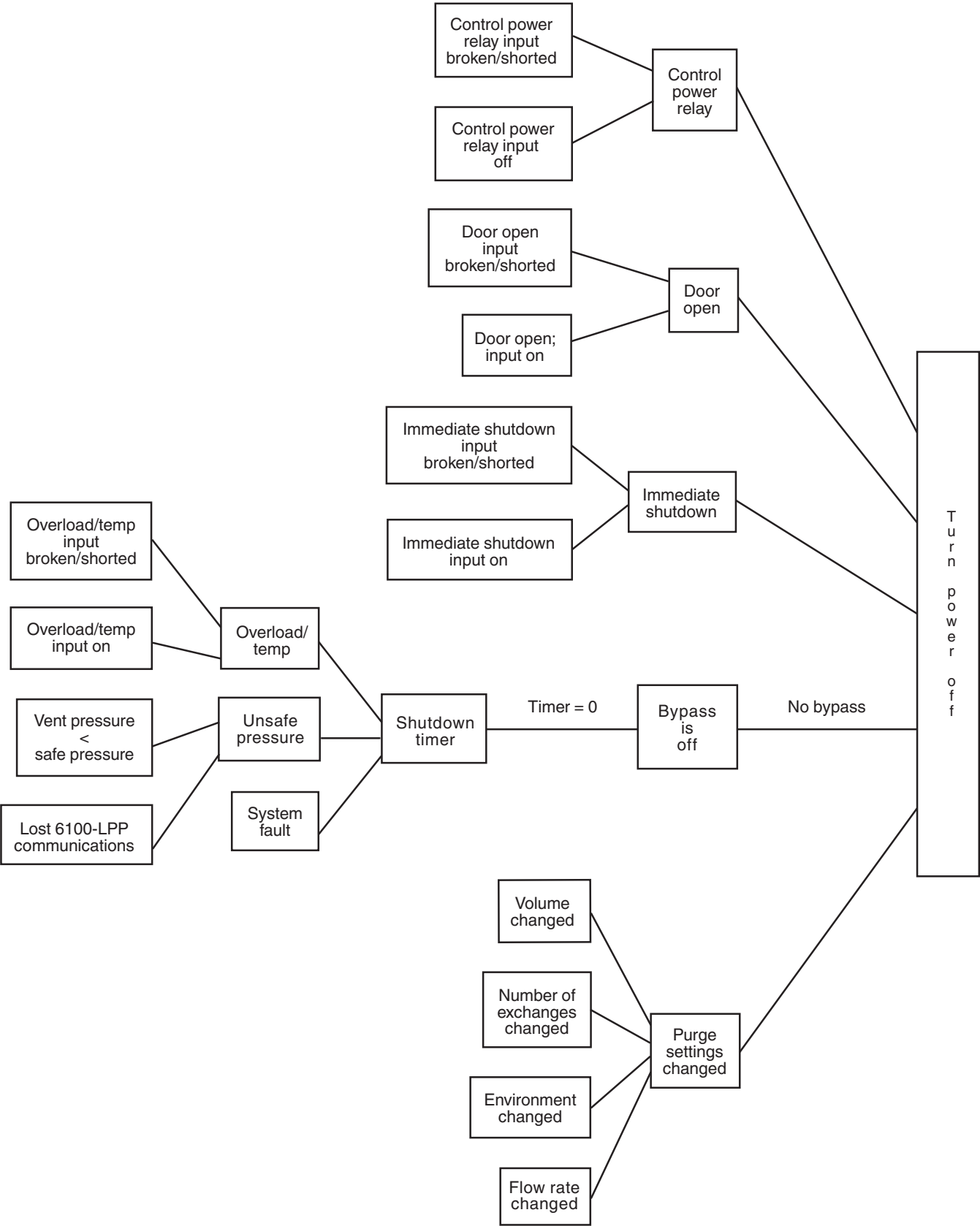
5.4 Purging Adjustment

When purging begins, the small Intrinsically safe pilot valve will energize, which will pneumatically energize the angle seat valve for purging. If the control unit is set up for fully automatic, it will automatically start this process when safe pressure is achieved. For SA (semi-automatic) or STD (manual) mode, the user will have to start purging through the command on the user-interface. Flow to the enclosure can be adjusted by varying the regulator (not supplied). If the regulator is adjusted during this process, re-adjustment of the pressurization valve may be required since the pressure source is the same for both pressurization and purging.

6 Operation
6.1 Turning on Power to the Enclosure



6.2 Turning off Power to the Enclosure



6.3 6100 Series System Components

The 6100 series consists of the 6100-MP-EX-XX-XXX control unit, which includes the pneumatic components for purging and pressurization and user interface, the EPV-6100-MP-XXX-XXX enclosure vent, and the 6100-MP-LPP-01 pressure sensor. All three device are separate items. Optional temperature sensing devices are available for temperature monitoring/control.

6100 Control Unit Components

- EPCU mounted in an explosion proof / flameproof enclosure
- Intrinsically safe interface with display and cable pre-installed
- Intrinsically safe termination board pre-wired to the EPCU
- Pneumatic system for purging and pressurization
- Angle seat valve for purging, which is actuated from an intrinsically safe pilot valve
- Manual gate valve for pressurization
- Manual gate valve for regulation
- Optional regulator for purge gas supply
- Copper tubing, 1 ¼" for valve connections
- Inlet and outlet connection, 1 ¼" FNPT stainless steel for purging supply and enclosure connection
- Stainless steel IP66 enclosure
- Intrinsically safe and power terminals customer connection

EPV-6100 Enclosure Protection Vent Components

- Stainless steel housing with stainless steel spark arrestor
- Specified orifice plate and pressure switch mounted and adjusted for required flow rate
- 3 m cable for intrinsically safe connection to I.S. input 3 on the I.S. termination board in the 6100 control unit

6100-MP-LPP-01 Pressure Sensor Components

- Pressure sensor mounted in 6061 anodized aluminum block
- 1 ½" NPT process connection
- Connector cable with 3 m for connection back to intrinsically safe termination board in control unit
- I.S. wiring labels



Note!

The EPV-6100 vent must be mounted in an orientation so that the vent opening (screen opening) is facing toward the ground.

Note!

Flow rate through the vent for purging requires more flow than specified because of leakage from the enclosure and safety tolerances due to temperature, barometric pressure, switch tolerances, and general tolerances of the system.

Electronic Power Control Unit—EPCU

The EPCU houses the redundant microprocessors, enclosure power contacts, (2) auxiliary contacts, power supply module, galvanically isolated barriers for the inputs, vent(s), and temperature modules. The EPCU is easy to remove and install into the explosion-proof enclosure that houses it.

The EPCU is available in 20 ... 30 VDC or 100 ... 250 VAC units. The enclosure power contacts are force-guided safety relays. The auxiliary contacts can be user configured for different functions, depending on user requirements.

User interface controller—UIC

The 6100 series is user programmable for many of the configurable options available. This is done with the intrinsically safe user interface on the face of the unit, which can also be remote mounted. The user interface contains a 2 x 20 LCD that allows programming through a set of buttons on the menu-driven unit. All configuration and options are programmed through this unit. There are also (5) LEDs for easy visual indication of operation:

- Safe pressure – This turns on (blue) when safe pressure is achieved inside the enclosure.
- Enclosure power – This is (red) when the enclosure is on. The enclosure power can be on only after a successful purge and a safe pressure is achieved. The bypass option allows power to remain on if safe pressure is lost.
- Rapid Exchange® – The rapid exchange or purging flow rate turns on (blue) when the flow rate is measuring proper flow.
- System bypass – This turns on (yellow) when the system bypass is active. This should be used only when the area around the enclosure is known to be safe.
- Alarm fault – The (red) LED blinks when any alarm input is detected and is solid when there is an internal system fault.

Requirements for Purging/Pressurization

Certifications allow the 6100 series to be used on enclosures in gas-hazardous atmospheres. Gas atmospheres require purging of the enclosure. Once the pressure within the enclosure is above the minimum level, the equipment within the enclosure can be energized.

Purge Timing

The enclosure purging time is based on the enclosure volume, the number of exchanges required, and the EPV-6100 vent being used. These parameters are entered by the user with the enclosure volume and number of exchanges provided by the user and the EPV-6100 vent flow rated listed on the data for the specific model.

Example:

- The enclosure volume is 14,000 liters
- The number of exchanges is 10
- The vent is the EPV-6100-MP-080-XXX (required flow rate for purging is 8000 l/min)

Purge time = $(14000 * 10) / 8000 = 17.5 \text{ min}$

The same example for an EPV-6100-MP-110-XXX, which the required flow rate for purging is 11,000 l/min
Purge time = $(14000 * 10) / 11000 = 12.7 \text{ min}$

Note!



The following parameters must be entered for the purge time:

- Enclosure volume
- Number of exchanges
- Type of vent for flow rate—enter flow rate

Minimum purge time is 2 min.

Fixed Purge Time

The purge time is based on the known enclosure volume, number of volume exchanges, and flow rate through the vent. If the flow rate is below the required minimum, then the purging cycle will reset and will not start until the flow rate is above the selected rate. The actual time is calculated by the EPCU.

Purging modes

Purging start-up can be set in 3 different modes:

- **STD** – Standard mode requires the operator to engage the manifold solenoid valve manually when purging and manually disengage when a successful purging is complete.
- **SA** – Semi-automatic mode requires the operator to engage the manifold solenoid valve manually when purging. The EPCU will automatically disengage when a successful purging is complete.
- **FA** – Fully-automatic mode will automatically engage the manifold solenoid valve when safe pressure is detected and will automatically disengage when a successful purging is complete.

The minimum purge time is 2 minutes.

During the purging cycle, when the enclosure pressure reaches 0.62 mbar (0.25" wc) or higher, there will be a 5 second delay before the rapid exchange solenoid valve is activated. If the flow is enough through the vent to satisfy the required flow rate setting, then the timer will begin after 1 min. The update of the timer is in increments of 1 min in the Fixed Purge Time and % completed in the Dynamic Purge Time.

Pressure as Input

In the programming menu under "INPUT SETTINGS" for the optional pressure control. The pressure control is achieved within the enclosure by opening and closing a purging valve or manifold on the 6100 control unit. These two internal pressure set points are controlled by the manifold or an outside source for pressure. The pressure function can manage the control output 2, or the control valve (manifold valve).

- The "ON PRESSURE" is the lowest pressure you want in the enclosure and will start the control action on when pressure goes below this value.
- The "OFF PRESSURE" is when the valve shuts off. When the pressure is between these two values, nothing will happen.
- The "ON PRESSURE" function is active until the "OFF PRESSURE" is reached.

Note!



This function does not operate during purging cycle and only operates after purging and pressurization.

The "ON PRESSURE" always has to be lower than the "OFF PRESSURE". This cannot be reversed.



I.S. Inputs 1 - 2

There are (4) intrinsically safe inputs for activation of various outputs and actions by the EPCU. These inputs only accept a dry contact for activation and are supplied by the EPCU's galvanically isolated barrier. The configurations of the inputs for various actions are done through the user-interface controller. Only one function can operate per input. The intrinsically safe inputs can be configured through the UIC to activate the auxiliary relays, energize the Rapid Exchange valve, de-energize the enclosure contacts, and shut the system down, as well as other actions and outputs. To monitor wiring, the SRM-6000 (sensor resistor module, not required, ordered separately) can be added to detect shorts or breaks in the inputs' wiring to the contacts.

Outputs

Enclosure 1 and Enclosure 2

There are (2) normally open dry contacts for the enclosure power that can be energized only after a successful purging and a minimum enclosure pressure is maintained. Loss of pressure will cause the contacts to de-energize unless the shutdown timer is activated or bypass mode is implemented. These contacts operate simultaneously.

Auxiliary 1 and Auxiliary 2

The auxiliary outputs can be used for control or alarms. Auxiliary 1 gives an output when the system is purging or compensating for leakages if the 'Pressure as Input' is being used. Auxiliary 2 can be programmed by the user for various conditions of the system. See 'OUTPUT' configuration for output parameters.



Danger!

Do not use auxiliary contact for power to enclosure(s).



Danger!

If powering auxiliary equipment with auxiliary 1 or auxiliary 2 outputs, the wiring methods used must be suitable for the hazardous area.

Temperature Inputs

The 6000-TEMP-01 temperature hub and 6000-TSEN-01 external temperature sensor(s) are designed to work only with the 6000 purge and pressurization system.

An averaging or maximum temperature input reading from the sensor(s) is used to control a solenoid valve or activate the auxiliary relay to cool or heat the enclosure, or warn of temperature problems.

In the programming menu, under "SENSOR SETUP", "EXT SENSOR COUNT", you can configure up to 3 sensors per temperature hub. Each temperature hub has one embedded temperature sensor. In the programming menu under "INPUT SETTINGS" you will select the "HUB". This must be selected if you want to include the hub as a sensor input.



Note!

You may not want to include the temperature as an input if the sensor is not located near the device or process you are tracking the temperature of.

Once a "CONTROL ACTION" is selected, then select "SETPOINT TYPE" for the "AVERAGE" or "SINGLE PT".



Note!

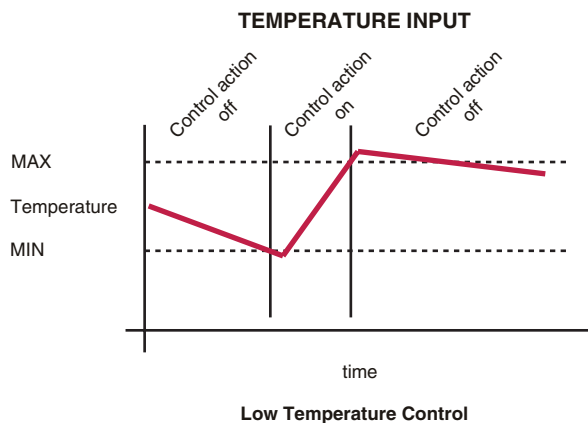
If using more than one (1) sensor, you may want the control action to occur during the peak or average temperature of the sensors.

"ON SET POINT" and "OFF SET POINT" are the temperatures for the control action.



Note!

The "ON SET POINT" can be greater than the "OFF SET POINT"



EPV-6100 I.S. Relief Vent

The EPV-6100 vent exhausts excess pressure from the enclosure when the enclosure pressure exceeds the breaking pressure of the vent's relief mechanism. The EPV-6100 also has an internal measured orifice plate with a differential pressure sensor to detect pressure across this orifice plate to be converted to a flow rate. The pressure switch is set by the factory for the specific orifice plate and cannot be changed in the field. Once the required flow rate across the orifice plate is achieved, the differential pressure switch closes and sends a signal back to the 6100 EPCU, and purging can start. If at any time during purging the flow drops below the required flow, the timer in the EPCU will reset and purging will not start until required flow is met.

Note that the published flow rate for each vent requires more flow to achieve purging because of leakages in the enclosure and safety factors due to leakage from the enclosure and safety tolerances due to temperature, barometric pressure, switch tolerances and general tolerances of the system.

For example, the published flow rate for the EPV-6100-MP-080-XXX, which is also the flow rate used in the calculation of the purge time, is 8000 l/min, but the actual flow rate required to start purging in a completely sealed enclosure may be 10,000 l/min. However, there is no correction factor for using this over the -20 °C to 60 °C temperature range of elevation changes. This also includes long-term drift and other safety factors.

6.4 Setup Procedures

This is a recommended procedure for setting up the correct pressurization and purging of an enclosure/motor.

1. Ensure that the electrical, mechanical, and pneumatic connections and requirements are met to operate your system. Refer to this manual and appropriate standards for explanation of requirements.
2. Apply power to the 6100 control unit.
3. This step is for initial setup. The factory default of the 6100 control unit is 'SA' (semi-automatic mode). Purging does not start until it is initiated by the operator on the 6100 display on the control unit. To change this function to FA (fully automatic), see 'Programming Menu' for instructions. Semi-automatic mode should be used for setting pressurization pressures and purging flows initially in the enclosure/motor.
4. The 6100 controller is equipped with a maximum pressure alarm and shut off of the purging valve. This pressure is read by the 6100-MP-LPP-01. Set this value in the purge settings for overpressure protection. If the pressure on the 6100-MP-LPP-01 goes above this maximum pressure, it will shut off the purging valve when in the purging mode.
5. Verify that the 'manual gate valve for pressurization' is fully closed before applying pressure to the system.
6. Turn on the protective gas supply to the 6100 series system inlet on the pneumatic tubing. Make sure line pressure is below 8.2 bar (120 psig).
7. Adjust pressurization and purging values.
 - a. Verify that the manual gate valve for regulation is fully open by turning counterclockwise.
 - b. From the fully closed position, open the manual gate valve for pressurization to about 3 to 4 complete turns (counterclockwise).
 - c. Adjust the supply regulator until the safe pressure LED on the 6100 control unit turns on.
 - d. Adjust the manual gate valve for pressurization so that the pressure is above the minimum pressure set point. This is to compensate for any fluctuation in the supply line.
 - e. Start the purging by pushing 'START/SET' on the 6100 control unit display. The unit should start purging after about 1 second. If the purging begins, then suddenly stops and the alarm LED is flashing, check the alarms in "Statistics" to determine if it is a "Max Pressure" alarm. If so, the maximum pressure set point has been reached by the 6100-MP-LPP-01 pressure sensor. Reduce the pressure by gradually closing the manual gate valve for regulation to reduce the purging flow, which will result in a lower purging pressure.
 - f. Adjust the supply regulator so that the pressure in the enclosure is above the purging pressure. See EPV-6100 data for purging pressure per vent size.
 - g. Once this is established, the unit will go through a proper purging. After the system is finished purging, the purging valve will shut off and the manual gate valve for pressurization will be compensating for

leakages. If the supply regulator was adjusted during the purging phase, the manual gate valve for pressurization may need to be readjusted. If the supply regulator was increased, the manual gate valve for pressurization may need to be decreased. If the regulator was decreased, the manual gate valve for pressurization may need to be increased. The latter may cause the system to drop out of operation and require purging again because it dropped below the minimum pressure value.

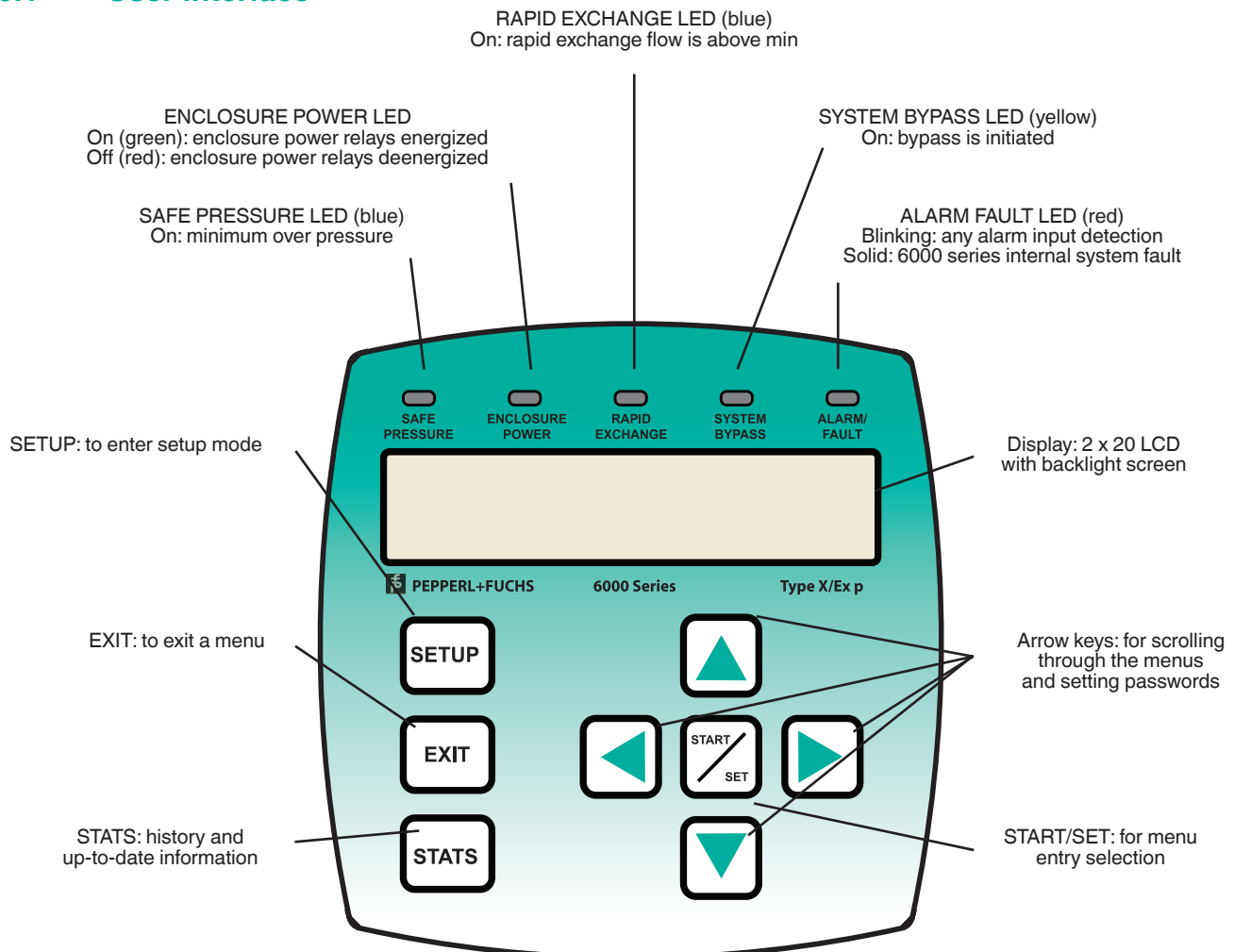
8. The system is now ready to operate.

6.5 Operation in Gas-Hazardous Locations

- Follow setup procedures for the 6100 series system above.
- Pressure is set to a value above the minimum safe pressure of 0.625 mbar [(0.25" wc), (62 Pa)], or the set value from the user input.
- After a successful purging, and maintaining an enclosure pressure above the minimum safe pressure, the enclosure is considered safe, and power to the enclosure can be energized.
- If the safe pressure drops below the minimum safe pressure, power to the enclosure will be disconnected unless a time delay for shutting off power is implemented (see the requirements for time delay of power shut-off).
- To energize the enclosure again, repeat the procedure.

6.6 Programming

6.6.1 User Interface



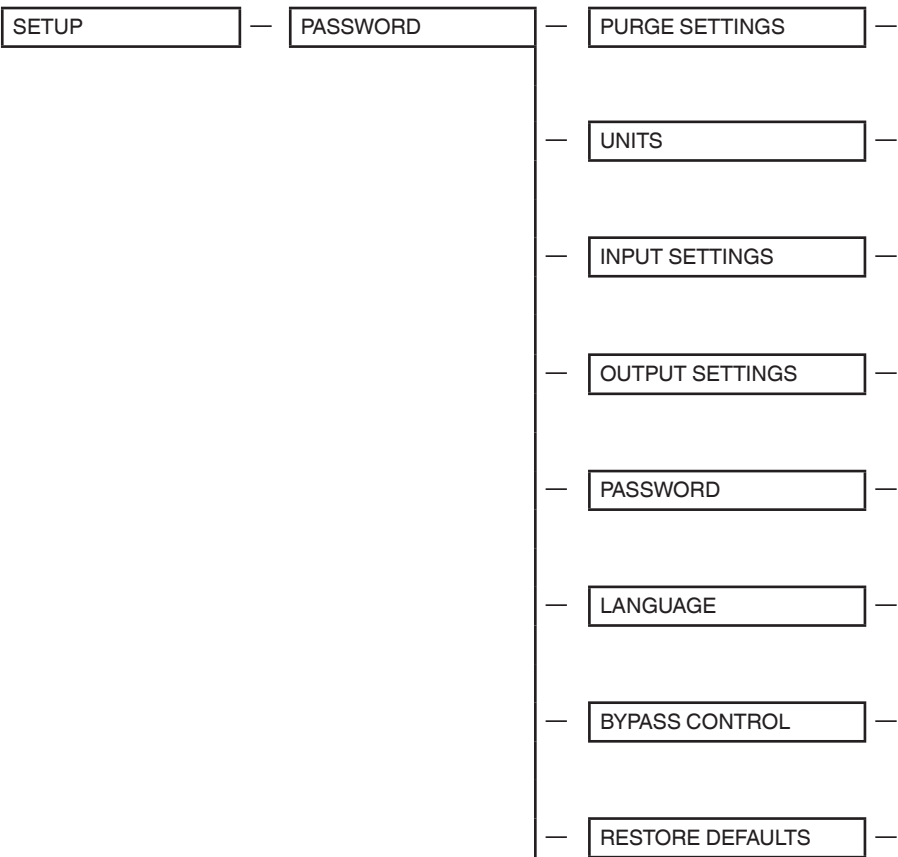


To cycle power to the unit, press the EXIT, Left Arrow, START/SET, and Right Arrow keys at the same time. This will cycle power to the EPCU without physically removing power. This re-cycle feature will de-energize the relays of the EPCU and reset the unit. This feature does not affect any of the settings in the menus of the EPCU.

To turn LCD back light on and off, press the left and right arrow keys at the same time. The setting remains through the power cycles.

To change the LCD contrast, press the up and down arrow keys at the same time. This will take you to the contrast screen. Then use the up and down arrow keys to adjust the contrast. Once the contrast level is selected, press the START/SET key to save setting. This setting remains through power cycles.

6.6.2 Programming Menu



6.6.3 Purge Settings

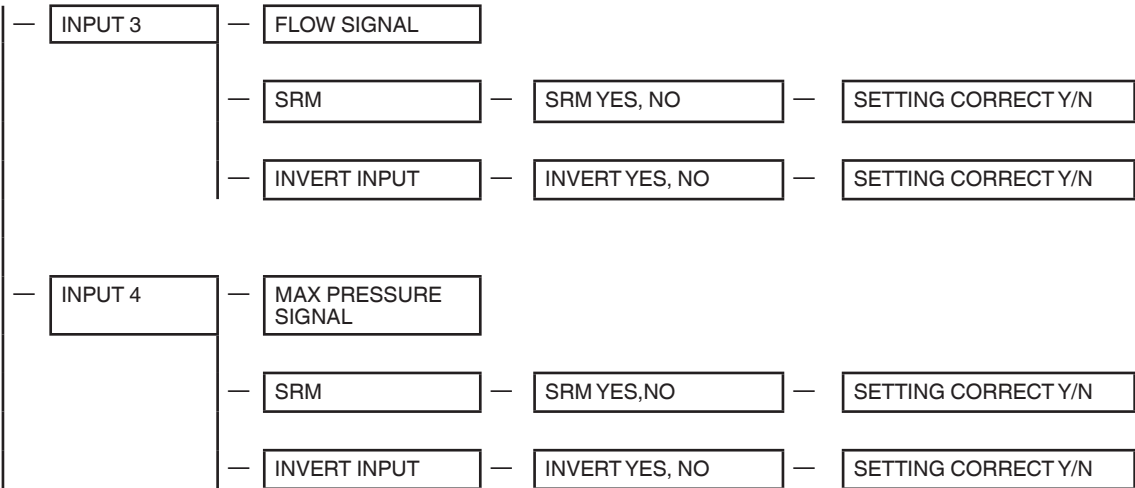
PURGE SETTINGS	—	ENCLOSURE VOLUME	—	USER DEFINED	—	SETTING CORRECT Y/N		
	—	NUMB OF EXCHANGES.	—	4 – 19	—	SETTING CORRECT Y/N		
	—	FLOW VALVE	—	USER DEFINED	—	SETTING CORRECT Y/N		
	—	VENT FLOW CONTROL	—	ONE VENT	—	SETTING CORRECT Y/N		
	—	ENVIRONMENT	—	MOTOR	—	SETTING CORRECT Y/N		
	—	PRESSURES	—	MAX OVER PRESSURE	—	XX.XX	—	SETTING CORRECT Y/N
			—	LOW PRESSURE	—	XX.XX	—	SETTING CORRECT Y/N
			—	MIN OVER PRESSURE	—	XX.XX	—	SETTING CORRECT Y/N
	—	TIMERS	—	PURGE TIMER	—	READ ONLY - FIXED TIME.	—	SETTING CORRECT Y/N
			—	SHUTDOWN TIMER	—	0 – 300 SEC.	—	SETTING CORRECT Y/N
			—	UNLOCK DOOR TIMER	—	0 – 300 MIN.	—	SETTING CORRECT Y/N
			—	BYPASS OFF TIMER	—	0 – 300 SEC.	—	SETTING CORRECT Y/N
—	OPERATION MODE	—	STD, SA, FA	—	SETTING CORRECT Y/N			

6.6.4 Units

UNITS	—	ENGLISH OR METRIC	—	SETTING CORRECT Y/N
-------	---	-------------------	---	---------------------

6.6.5
Inputs

INPUT SETTINGS	INPUT 1	INPUT 1 FUNCTION	DISABLED	SETTING CORRECT Y/N
		INPUT 1 FUNCTION	IMMEDIATE SHTDN	SETTING CORRECT Y/N
			DOOR OPEN ALARM	SETTING CORRECT Y/N
			OVERLOAD	SETTING CORRECT Y/N
			CONTROL PWR RELAY	SETTING CORRECT Y/N
			CONTROL OUTPUT 2	SETTING CORRECT Y/N
			CONTROL VALVE	SETTING CORRECT Y/N
			SYSTEM BYPASS	SETTING CORRECT Y/N
		SRM	SRM YES,NO	SETTING CORRECT Y/N
		INVERT INPUT	INVERT YES, NO	SETTING CORRECT Y/N
	INPUT 2	INPUT 2 FUNCTION	DISABLED	SETTING CORRECT Y/N
		INPUT 2 FUNCTION	IMMEDIATE SHTDN	SETTING CORRECT Y/N
			DOOR OPEN ALARM	SETTING CORRECT Y/N
			OVERLOAD	SETTING CORRECT Y/N
			CONTROL PWR RELAY	SETTING CORRECT Y/N
			CONTROL OUTPUT 2	SETTING CORRECT Y/N
			CONTROL VALVE	SETTING CORRECT Y/N
		SRM	SRM YES,NO	SETTING CORRECT Y/N
		INVERT INPUT	INVERT YES, NO	SETTING CORRECT Y/N



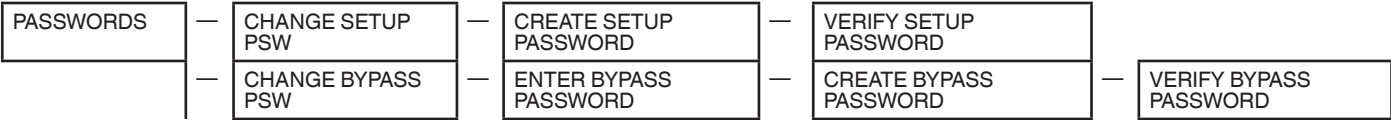
—	PRESS AS INPUT	PRESS FUNCTION	SETTING CORRECT Y/N		
		PRESS FUNCTION	DISABLED	SETTING CORRECT Y/N	
			CONTROL OUTPUT 1	SETTING CORRECT Y/N	
			CONTROL OUTPUT 2	SETTING CORRECT Y/N	
			CONTROL VALVE	SETTING CORRECT Y/N	
		ON PRESSURE	ON PRESSURE XX.X MBAR (IN WC)	SETTING CORRECT Y/N	
		OFF PRESSURE	OFF PRESSURE		
			XX.X MBAR (IN WC)	SETTING CORRECT Y/N	
—	TEMP INPUT	SENSOR SETUP	EXT SENSOR COUNT	XX	SETTING CORRECT Y/N
			USE HUB SENSOR	HUB YES, NO	SETTING CORRECT Y/N
		TEMP INPUT 1	TEMP FUNCTION	DISABLED	SETTING CORRECT Y/N
			TEMP FUNCTION	IMMEDIATE SHTDN	SETTING CORRECT Y/N
				DOOR OPEN ALARM	SETTING CORRECT Y/N
				OVERLOAD	SETTING CORRECT Y/N
				CONTROL PWR RELAY	SETTING CORRECT Y/N
				CONTROL OUTPUT 2	SETTING CORRECT Y/N
				CONTROL VALVE	SETTING CORRECT Y/N
				ALARM	SETTING CORRECT Y/N
			SETPOINT TYPE	*AVERAGE SINGLE PT	
			ON SET POINT	XX °C (°F)	
			OFF SET POINT	XX °C (°F)	

—	TEMP INPUT 2	—	TEMP FUNCTION	—	DISABLED	—	SETTING CORRECT Y/N
		—	TEMP FUNCTION	—	IMMEDIATE SHUTDOWN	—	SETTING CORRECT Y/N
				—	DOOR OPEN ALARM	—	SETTING CORRECT Y/N
				—	OVERLOAD	—	SETTING CORRECT Y/N
				—	CONTROL PWR RELAY	—	SETTING CORRECT Y/N
				—	CONTROL OUTPUT 2	—	SETTING CORRECT Y/N
				—	CONTROL VALVE	—	SETTING CORRECT Y/N
				—	ALARM	—	SETTING CORRECT Y/N
		—	SETPOINT TYPE	—	*AVERAGE SINGLE PT		
		—	ON SET POINT	—	XX °C (°F)		
		—	OFF SET POINT	—	XX °C (°F)		

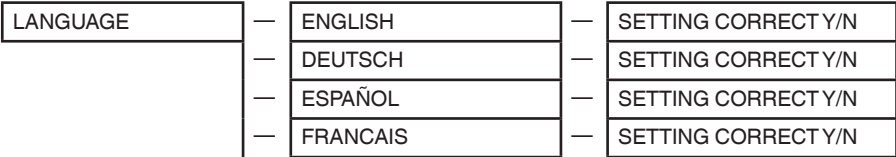
6.6.6 Outputs

OUTPUT SETTINGS	—	OUTPUT 1	—	BLOWER		
	—	OUTPUT 2 FUNCTION	—	DISABLED	—	SETTING CORRECT Y/N
			—	IMMED SHUTDN ALARM	—	SETTING CORRECT Y/N
			—	DOOR OPEN ALARM	—	SETTING CORRECT Y/N
			—	OVERLOAD/TEMP ALARM	—	SETTING CORRECT Y/N
			—	MAX PRESSURE ALARM	—	SETTING CORRECT Y/N
			—	LOW PRESSURE ALARM	—	SETTING CORRECT Y/N
			—	LOST PRESSURE ALARM	—	SETTING CORRECT Y/N
			—	ANNOUNCE PURGE	—	SETTING CORRECT Y/N
			—	ANY ALARM	—	SETTING CORRECT Y/N
			—	ENCL DOOR LOCK	—	SETTING CORRECT Y/N
			—	TEMP INPUT 1 ALARM	—	SETTING CORRECT Y/N
			—	TEMP INPUT 2 ALARM	—	SETTING CORRECT Y/N

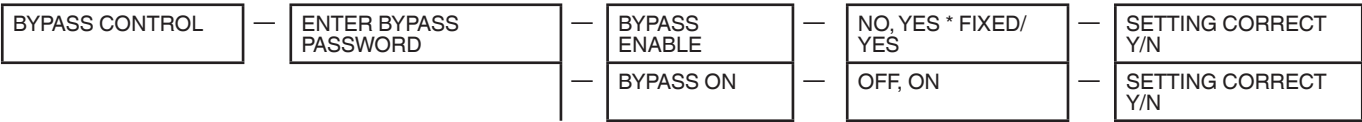
6.6.7 Password



6.6.8 Language



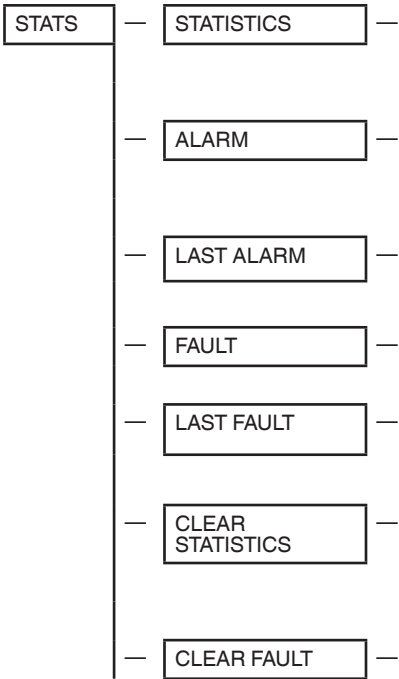
6.6.9 Bypass Control



6.6.10 Restore Defaults



6.6.11 Stats



6.6.12 Statistics

This provides system operating information. These fields are read only.

STATISTICS	TEMPERATURES	HUB SENSOR STATS	CURRENT HUB TEMP	CURRENT HUB TEMP
				XXX °C (°F)
			MAX HUB TEMP	MAX HUB TEMP
				XXX °C (°F)
			MIN HUB TEMP	MIN HUB TEMP
				XXX °C (°F)
		SENSOR 1 STATS	SENSOR 1 TEMP	SENSOR 1 TEMP
				XXX °C (°F)
			SENSOR 1 MAX TEMP	SENSOR 1 MAX TEMP
				XXX °C (°F)
			SENSOR 1 MIN TEMP	SENSOR 1 TEMP MIN
				XXX °C (°F)
		SENSOR 2 STATS	SENSOR 2 TEMP	SENSOR 2 TEMP
				XXX °C (°F)
			SENSOR 2 MAX TEMP	SENSOR 2 MAX TEMP
				XXX °C (°F)
			SENSOR 2 MIN TEMP	SENSOR 2 MIN TEMP
				XXX °C (°F)
		SENSOR 3 STATS	SENSOR 3 TEMP	SENSOR 3 TEM
				XXX °C (°F)
			SENSOR 3 MAX TEMP	SENSOR 3 MAX TEMP
				XXX °C (°F)
			SENSOR 3 MIN TEMP	SENSOR 3 MIN TEMP
				XXX °C (°F)
	MIN OVER PRESSURE	MIN OVER PRESSURE		
				X.XX MBAR (IN WC)
		MAX OVER PRESSURE		
				X.XX MBAR (IN WC)
		MIN PURGE PRESSURE		
				X.XX MBAR (IN WC)

—	MAX PURGE PRESSURE	—	MAX PURGE PRESSURE		
			X.XX MBAR (IN WC)		
—	LAST PURGE TIME	—	LAST PURGE TIME		
			XXXX MIN		
—	MIN PURGE FLOW	—	MIN PURGE FLOW		
			XX L/MIN (CFM)		
—	MAX PURGE FLOW	—	MAX PURGE FLOW		
			XX L/MIN (CFM)		
—	SYSTEM POWERED UP	—	SYSTEM POWERED UP		
			XX L/MIN (CFM)		
—	LAST SHUTDOWN	—	LAST SHUTDOWN		
			XX L/MIN (CFM)		
—	SHUTDOWN REASON	—	SHUTDOWN REASON		
			XX L/MIN (CFM)		
—	COM ERROR COUNT	—	COM ERROR COUN		
			XX L/MIN (CFM)		
—	P+F 6000 REVISION	—	MAIN UNIT	—	HARDWARE REVISION
				—	SOFTWARE REVISION
					XXXX
					XXXX
		—	USER INTERFACE	—	HARDWARE REVISION
				—	SOFTWARE REVISION
					XXXX
					XXXX
		—	VENT 1	—	HARDWARE REVISION
				—	SOFTWARE REVISION
					XXXX
					XXXX
		—	VENT 2	—	HARDWARE REVISION
				—	SOFTWARE REVISION
					XXXX
					XXXX
		—	TEMP HUB	—	HARDWARE REVISION
				—	SOFTWARE REVISION
					XXXX
					XXXX

6.6.13 Alarm

This provides the reason for the last system alarm.

ALARM	—	NONE
	—	NO SAFE PRESSURE
	—	MAX PRESSURE
	—	INPUT 1 BROKE/ SHORT
	—	INPUT 2 BROKE/ SHORT
	—	INPUT 3 BROKE/ SHORT
	—	INPUT 4 BROKE/ SHORT
	—	DOOR OPEN
	—	IMMEDIATE SHUTDWN
	—	OVERLOAD SHUTDWN
	—	LOST FLOW
	—	13 V
	—	9.5 V
	—	TEMP INPUT 1
	—	TEMP INPUT 2
	—	PRESSURE AS INPUT

6.6.14
Fault

This provides the reason for the system fault.

FAULT	—	NONE
	—	CONTROL OUTPUT 1
	—	CONTROL OUTPUT 2
	—	CONTROL VALVE
	—	ENCLOSURE POWER RELAY
	—	INPUT 1
	—	INPUT 2
	—	INPUT 3
	—	INPUT 4
	—	13 VOLT POWER
	—	9.5 VOLT POWER
	—	FLOW READING
	—	CONFIG STORAGE
	—	VENT 1 UPDATE
	—	CRC MISMATCH
	—	VENT 2 UPDATE
	—	VALVE
	—	VENT 1 FLOW UPDATE
	—	VENT 2 FLOW UPDATE
	—	TEMPERATURE UPDATE
	—	INTERNAL RAM

6.6.15 **Clear Statistics**

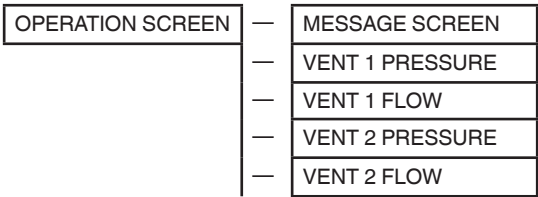


6.6.16 **Clear Fault**



6.6.17 **Operation Screen**

This provides the system information.



7 Maintenance and Repair

1. The 6100 purge and pressurization system does not require special maintenance except replacement of pneumatic filters, when used, and normal periodic functional checks, including pressure and flow readings within specifications contained in this manual. When checking whether the pressure and flow measurements of the EPV-6100 vent are within specifications, use calibrated equipment to determine measurements, or contact a Pepperl+Fuchs representative or the factory to send back the EPV-6100 vent for pressure and flow verification.
2. The purge and pressurization system, when operated in conjunction with a hazardous area, must not be modified. If there is a defect, the product may need to be replaced. Repairs must be performed only by a Pepperl+Fuchs specialist who is specifically trained and authorized to repair the defect.
3. Any replaceable fuses must be replaced with specific fuse ratings and type, as written in this manual under Specifications.
4. When servicing, installing, and commissioning, the area must be free of all combustible material and/or hazardous explosive gas. Only the terminal compartment of the control unit is accessible to the user. Not under any circumstances, shall the control unit, user-interface, or vent, be taken apart. The Ex d housing cover shall only be removed when power is removed from the device or the area is known to be safe.
5. Any cable glands that require replacement shall be replaced with the same model or another approved cable gland that meets the area classification.
6. When replacing the EPCU, the area must be free of hazardous gas and/or dust and power removed from the EPCU, enclosure contacts, and auxiliary contacts. Two screws on the bottom of the Ex d enclosure need to be loosened but not removed. Twist the EPCU clockwise and lift it out of the Ex d enclosure. Reverse to install new EPCU.

Contact customer service for an RMA (return merchandise authorization).

8 Alarm and Fault Conditions

The 6100 purge controller can indicate certain alarm and fault conditions when they happen. The alarm condition is indicated on the display under the Alarm/Fault LED and will blink for an alarm and remain solid for a fault. The alarm will not disengage enclosure contacts if they are on but can be directed to the AUX alarm contact. The fault will disengage enclosure contacts.

Alarm Descriptions

Alarm	Description	Cause
NO SAFE PRESSURE	Enclosure pressure is below minimum safe pressure	-No purge supply -Enclosure leakage too great
MAX PRESSURE	Enclosure pressure is above the maximum pressure allowed	-Purge supply pressure too much -EPV-6100 vent is blocked or not installed
LOW PRESSURE	Enclosure pressure is below the alarm pressure but above the min. safe pressure	-Purge supply capacity is not keeping up -Enclosure is starting to leak more
INPUT 1-4 BROKE/SHORT	When SRM is selected, then a wire is broken or shorted going to the switch input	-SRM is selected and not installed on the switch input -Broken or shorted wire to switch/SRM
DOOR OPEN	Causes the purge system to reset and will not start again until clear	- Signal from switch input activated door open -Shorted wire going to switch input with no SRM selected
IMMEDIATE SHUTDOWN	Causes the purge system to reset and will not start again until clear	-Signal from switch input activated immediate shutdown -Shorted wire going to switch input with no SRM selected
OVERLOAD SHUTDOWN	Does not reset purge system but can sound an alarm	Signal from switch input activated immediate shutdown -Shorted wire going to switch input with no SRM selected
LOST FLOW	During purging, if EPV-6100 vent detects a flow lower than expected, alarm is activated	Signal from switch input activated immediate shutdown -Shorted wire going to switch input with no SRM selected
13V	Power to internal bus is too low for components to operate properly	-Defective EPCU
9.5V	Power to the I.S. comm bus for vent, UIC, Temp Hub is too low for proper operation	-Defective EPCU -I.S. barrier board fuse is blown
TEMP INPUT 1	Temperature Input 1 is active	-The temperature of the Temp Hub or Temp sensor is outside the limits
TEMP INPUT 2	Temperature Input 2 is active	-The temperature of the Temp Hub or Temp sensor is outside the limits
ENCLOSURE POWER RELAY	Monitor circuit detects relay malfunctioned	-One of the contacts are welded shut

Fault Descriptions

Fault	Description	Cause
CONTROL VALVE	The control valve circuit is not functioning properly	-I.S. barrier board fuse is blown -Power supply to control unit is too low
INPUT 1-4	Input 1 ,2, 3, or 4 is not functioning properly	-I.S. barrier for inputs has blown fuse -EPCU defective
FLOW READING	Flow reading from EPV-6100 vent is corrupted or not available	-Flow readings are outside the range of the EPV-6100 vent being used
CONFIG STORAGE	Memory location corrupted	-EPCU defective
6100-LPP UDPATE	6100-LPP is not communicating	-No LPP is connected, or LPP is misconnected
CRC MISMATCH	Both of the EPCU processors instruction set are not in sync	-EPCU is defective
EPV-6100 FLOW UPDATE	EPV-6100 vent is getting power but communication is not correct	-One or more of the connections is not correct -EPV-6100 is defective
TEMPERATURE UPDATE	The Temp Hub/Temp sensor reading is out of specification or not reading	-Connections could be incorrect -Not set up properly in the menu structure of the EPCU
INTERNAL RAM	EPCU memory fault	-EPCU is defective
9.5V	Power to the I.S. comm bus for vent, UIC, Temp Hub is too low for proper operation	-Defective EPCU -I.S. barrier board fuse is blown
TEMP INPUT 1	Temperature Input 1 is active	-The temperature of the Temp Hub or Temp sensor is outside the limits
TEMP INPUT 2	Temperature Input 2 is active	-The temperature of the Temp Hub or Temp sensor is outside the limits
ENCLOSURE POWER RELAY	Monitor circuit detects relay malfunctioned	-One of the contacts are welded shut

9 Dismantling and Decommissioning

Abide by all local and any other code requirements for disposing of electronic equipment. When disposing of any component of the 6100 system, certification labels or printing shall be marked VOID across each label or printing.

10 Appendix
10.1 Programming Worksheet

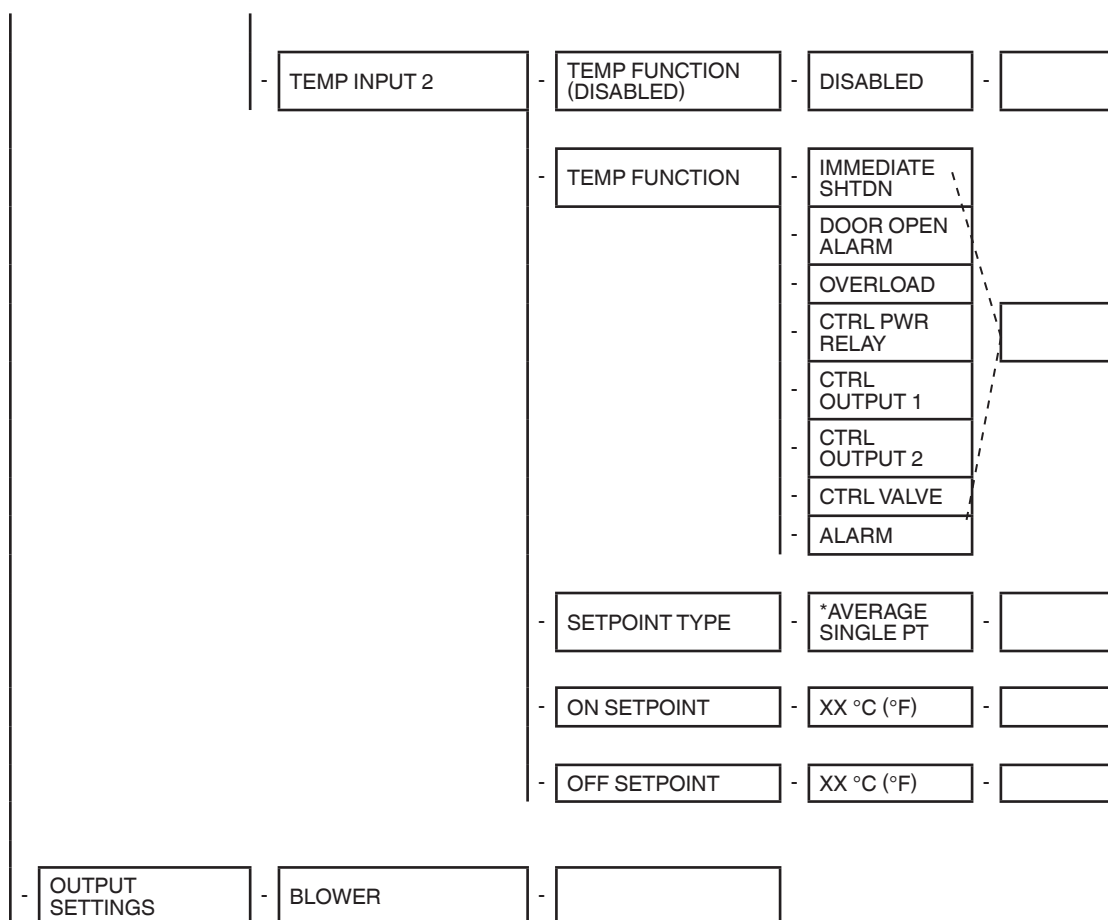
SETUP	PASSWORD	PURGE SETTINGS	ENCLOSURE VOLUME (XXXX FT ³ [M ³])	USER DEFINED		
			# OF EXCHANGES (5).	4 – 19		
			FLOW VALUE (12)			
			VENT FLOW CONTROL (ONE VENT)	ONE VENT		
			ENVIRONMENT (GAS)	MOTOR		
			PRESSURES	MAX OVER PRESSURE (10 MBAR [4.0 IN WC])		
				LOW PRESSURE (10 MBAR [4.0 IN WC])		
				MIN OVER PRESSURE (0.63 MBAR [0.25 IN WC])		
			TIMERS	PURGE TIMER	READ ONLY - FIXED TIME	
				SHUTDOWN TIMER (0 SEC.)	0 – 300 SEC.	
				UNLOCK DOOR TIMER (0 MIN)	0 – 300 MIN.	
			OPERATION MODE (FA)	STD, SA, FA		
		UNITS (ENGLISH)	ENGLISH			
			METRIC			

	INPUT SETTINGS	INPUT 1	INPUT 1 FUNCTION (DISABLED)	DISABLED	
			INPUT 1 FUNCTION	IMMEDIATE SHTDN	
				DOOR OPEN ALARM	
				OVERLOAD	
				CTRL PWR RELAY	
				CTRL OUTPUT 1	
				CTRL OUTPUT 2	
				CTRL VALVE	
			SYS BYPASS		
			SRM (NO)	YES, NO	
		INVERT INPUT (NO)	YES, NO		
		INPUT 2	INPUT 2 FUNCTION (DISABLED)	DISABLED	
			INPUT 2 FUNCTION	IMMEDIATE SHTDN	
				DOOR OPEN ALARM	
OVERLOAD					
CTRL PWR RELAY					
CTRL OUTPUT 1					
CTRL OUTPUT 2					
CTRL VALVE					
SRM (NO)	YES, NO				
INVERT INPUT (NO)	YES, NO				

	-	INPUT 3	-	FLOW SIGNAL	-			
			-	SRM (NO)	-	YES, NO	-	
			-	INVERT INPUT (NO)	-	YES, NO	-	
	-	INPUT 4	-	MAX PRESSURE SIGNAL	-			
			-	SRM (NO)	-	YES, NO	-	
			-	INVERT INPUT (NO)	-	YES, NO	-	

```

graph LR
    CONFIG[CONFIG] --> PRESS_AS_INPUT[PRESS AS INPUT]
    CONFIG --> TEMP_INPUT[TEMP INPUT]
    CONFIG --> TEMP_INPUT_1[TEMP INPUT 1]
    
    PRESS_AS_INPUT --> PRESS_FUNC_DISABLED[PRESS FUNCTION (DISABLED)]
    PRESS_AS_INPUT --> PRESS_FUNC[PRESS FUNCTION]
    PRESS_AS_INPUT --> ON_PRESSURE[ON PRESSURE]
    PRESS_AS_INPUT --> OFF_PRESSURE[OFF PRESSURE]
    
    TEMP_INPUT --> SENSOR_SETUP[SENSOR SETUP]
    
    TEMP_INPUT_1 --> TEMP_FUNC_DISABLED[TEMP FUNCTION (DISABLED)]
    TEMP_INPUT_1 --> TEMP_FUNC[TEMP FUNCTION]
    TEMP_INPUT_1 --> SETPOINT_TYPE[SETPOINT TYPE]
    TEMP_INPUT_1 --> ON_SETPOINT[ON SETPOINT]
    TEMP_INPUT_1 --> OFF_SETPOINT[OFF SETPOINT]
    
    PRESS_FUNC_DISABLED --> DISABLED_DISABLED[DISABLED]
    DISABLED_DISABLED --> FIELD_DISABLED_DISABLED[ ]
    
    PRESS_FUNC --> DISABLED_PRESS_FUNC[DISABLED]
    DISABLED_PRESS_FUNC --> CTRL_OUT1_PRESS_FUNC[CTRL OUTPUT 1]
    CTRL_OUT1_PRESS_FUNC --> CTRL_OUT2_PRESS_FUNC[CTRL OUTPUT 2]
    CTRL_OUT2_PRESS_FUNC --> CTRL_VALVE_PRESS_FUNC[CTRL VALVE]
    CTRL_VALVE_PRESS_FUNC --> FIELD_PRESS_FUNC[ ]
    
    ON_PRESSURE --> ON_PRESSURE_VAL[ON PRESSURE]
    ON_PRESSURE_VAL --> MBAR_IN_WC_ON_PRESSURE[XX.X MBAR (XX.X IN WC)]
    MBAR_IN_WC_ON_PRESSURE --> FIELD_ON_PRESSURE[ ]
    
    OFF_PRESSURE --> OFF_PRESSURE_VAL[OFF PRESSURE]
    OFF_PRESSURE_VAL --> MBAR_IN_WC_OFF_PRESSURE[XX.X MBAR (XX.X IN WC)]
    MBAR_IN_WC_OFF_PRESSURE --> FIELD_OFF_PRESSURE[ ]
    
    SENSOR_SETUP --> EXT_SENSOR_COUNT[EXT SENSOR COUNT]
    EXT_SENSOR_COUNT --> XX_VAL[XX]
    XX_VAL --> FIELD_EXT_SENSOR_COUNT[ ]
    
    SENSOR_SETUP --> USE_HUB_SENSOR[USE HUB SENSOR]
    USE_HUB_SENSOR --> HUB_YES_NO[HUB YES/NO]
    HUB_YES_NO --> FIELD_USE_HUB_SENSOR[ ]
    
    TEMP_FUNC_DISABLED --> DISABLED_TEMP_FUNC[DISABLED]
    DISABLED_TEMP_FUNC --> FIELD_TEMP_FUNC_DISABLED[ ]
    
    TEMP_FUNC --> IMMEDIATE_SHTDN[IMMEDIATE SHTDN]
    IMMEDIATE_SHTDN --> DOOR_OPEN_ALARM[DOOR OPEN ALARM]
    DOOR_OPEN_ALARM --> OVERLOAD[OVERLOAD]
    OVERLOAD --> CTRL_PWR_RELAY[CTRL PWR RELAY]
    CTRL_PWR_RELAY --> CTRL_OUT1_TEMP_FUNC[CTRL OUTPUT 1]
    CTRL_OUT1_TEMP_FUNC --> CTRL_OUT2_TEMP_FUNC[CTRL OUTPUT 2]
    CTRL_OUT2_TEMP_FUNC --> CTRL_VALVE_TEMP_FUNC[CTRL VALVE]
    CTRL_VALVE_TEMP_FUNC --> ALARM[ALARM]
    ALARM --> FIELD_TEMP_FUNC[ ]
    
    SETPOINT_TYPE --> AVERAGE_SINGLE_PT[*AVERAGE SINGLE PT]
    AVERAGE_SINGLE_PT --> FIELD_SETPOINT_TYPE[ ]
    
    ON_SETPOINT --> XX_TEMP_ON_SETPOINT[XX °C (°F)]
    XX_TEMP_ON_SETPOINT --> FIELD_ON_SETPOINT[ ]
    
    OFF_SETPOINT --> XX_TEMP_OFF_SETPOINT[XX °C (°F)]
    XX_TEMP_OFF_SETPOINT --> FIELD_OFF_SETPOINT[ ]
  
```



	<div>-</div> <div>OUTPUT 2 FUNCTION (DISABLED)</div>	<div>-</div> <div>DISABLED</div> <div>-</div> <div>IMMED SHUTDN ALARM</div> <div>-</div> <div>DOOR OPEN ALARM</div> <div>-</div> <div>OVERLOAD/TEMP ALARM</div> <div>-</div> <div>MAX PRESSURE ALARM</div> <div>-</div> <div>LOW PRESSURE ALARM</div> <div>-</div> <div>LOST PRESSURE ALARM</div> <div>-</div> <div>ANNOUNCE PURGE</div> <div>-</div> <div>ANY ALARM</div> <div>-</div> <div>ENCL DOOR LOCK</div> <div>-</div> <div>TEMP INPUT 1 ALARM</div> <div>-</div> <div>TEMP INPUT 2 ALARM</div>	<div>-</div> <div></div>	
<div>-</div> <div>PASSWORDS</div>	<div>-</div> <div>CHANGE SETUP PSW</div> <div>-</div> <div>CHANGE BYPASS PSW</div>	<div>-</div> <div>CREATE SETUP PASSWORD</div> <div>-</div> <div>ENTER BYPASS PASSWORD</div>	<div>-</div> <div></div> <div>-</div> <div>CREATE BYPASS PASSWORD</div>	<div>-</div> <div></div>
<div>-</div> <div>LANGUAGE (ENGLISH)</div>	<div>-</div> <div>ENGLISH</div> <div>-</div> <div>DEUTSCH</div> <div>-</div> <div>ESPAÑOL</div> <div>-</div> <div>FRANCAIS</div>	<div>-</div> <div></div>		
<div>-</div> <div>BYPASS CONTROL</div>	<div>-</div> <div>ENTER BYPASS PASSWORD</div>	<div>-</div> <div>BYPASS ENABLE (NO)</div> <div>-</div> <div>BYPASS ON (NO)</div>	<div>-</div> <div>NO, YES * FIXED/YES</div> <div>-</div> <div>OFF, ON</div>	<div>-</div> <div></div> <div>-</div> <div></div>
<div>-</div> <div>FACTORY RESTORE</div>	<div>-</div> <div>ENTER RESTORE PASSWORD</div>	<div>-</div> <div>NO, YES</div>	<div>-</div> <div></div>	

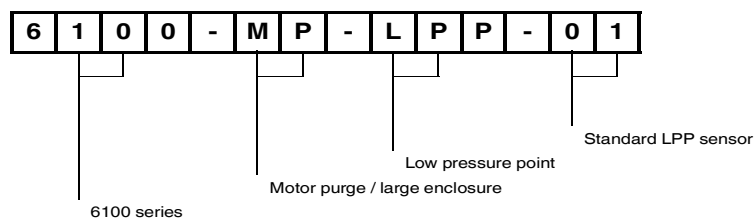
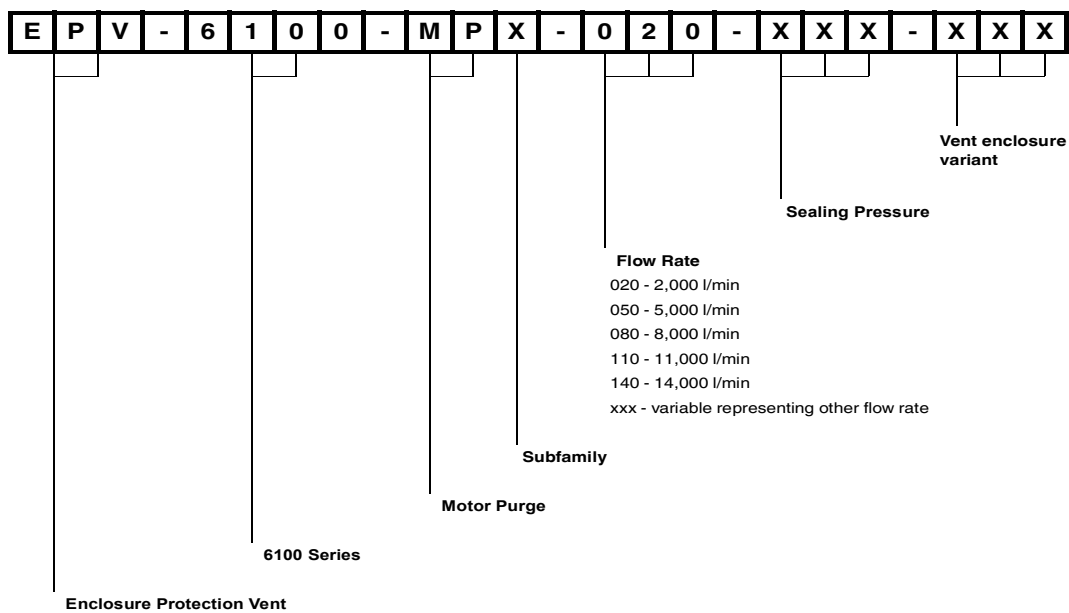
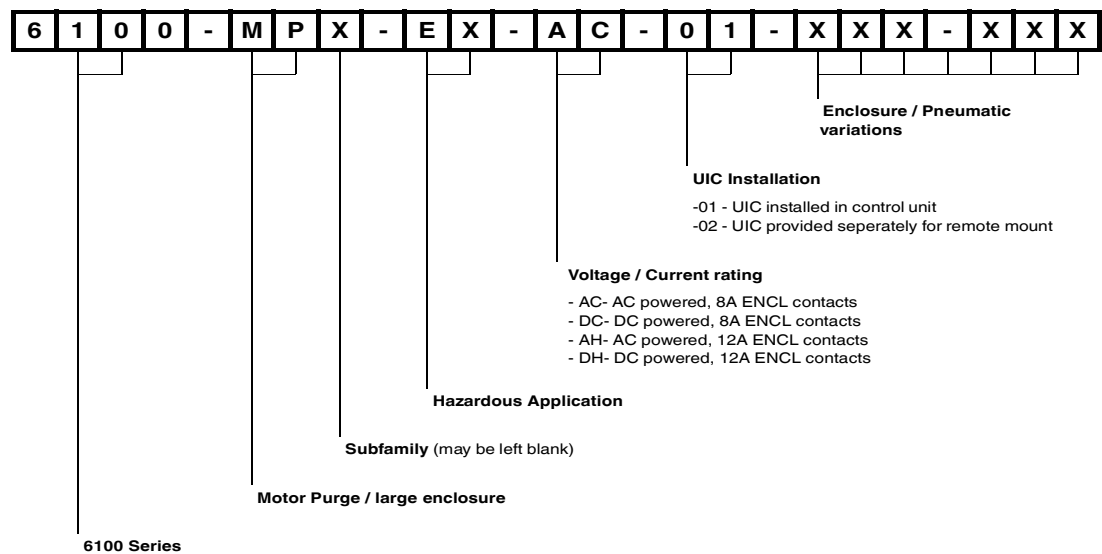
ARROW KEY SEQUENCE - 4 TO 8 STROKES EACH

SETUP PASSWORD								
BYPASS PASSWORD								

DATE: _____

NAME: _____

10.2 Type Codes



Notes

Your automation, our passion.

Explosion Protection

- Intrinsic Safety Barriers
- Signal Conditioners
- FieldConnex® Fieldbus
- Remote I/O Systems
- Electrical Ex Equipment
- Purge and Pressurization
- Industrial HMI
- Mobile Computing and Communications
- HART Interface Solutions
- Surge Protection
- Wireless Solutions
- Level Measurement

Industrial Sensors

- Proximity Sensors
- Photoelectric Sensors
- Industrial Vision
- Ultrasonic Sensors
- Rotary Encoders
- Positioning Systems
- Inclination and Acceleration Sensors
- Fieldbus Modules
- AS-Interface
- Identification Systems
- Displays and Signal Processing
- Connectivity

Pepperl+Fuchs Quality
Download our latest policy here:

www.pepperl-fuchs.com/quality

