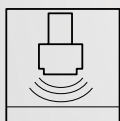


LCR20 HART

Level Radar

UNI Slip on Flange
UNI-Überwurfflansch

Installationsanleitung
Installation Instruction



With regard to the supply of products, the current issue of the following document is applicable:
The General Terms of Delivery for Products and Services of the Electrical Industry, published by the Central Association of the Electrical Industry (Zentralverband Elektrotechnik und Elektroindustrie (ZVEI) e.V.) in its most recent version as well as the supplementary clause: "Expanded reservation of proprietorship"

Worldwide

Pepperl+Fuchs Group
Lilienthalstr. 200
68307 Mannheim
Germany
Phone: +49 621 776 - 0
E-mail: info@de.pepperl-fuchs.com

North American Headquarters

Pepperl+Fuchs Inc.
1600 Enterprise Parkway
Twinsburg, Ohio 44087
USA
Phone: +1 330 425-3555
E-mail: sales@us.pepperl-fuchs.com

Asia Headquarters

Pepperl+Fuchs Pte. Ltd.
P+F Building
18 Ayer Rajah Crescent
Singapore 139942
Phone: +65 6779-9091
E-mail: sales@sg.pepperl-fuchs.com
<https://www.pepperl-fuchs.com>

UNI Slip on Flange for LCR20

1 Validity

The installation instruction is valid for the following spare part sets:

Order number	Original spare part set	Device usage
71162777	UNI slip on flange 3 inch/DN80/80, horn 80 mm	LCR20-XXXXAX-XX-XX-XX
71162781	UNI slip on flange 4 inch/DN100/100, horn 100 mm	LCR20-XXXXBX-XX-XX-XX

Table 1

X = Placeholder
At this position, an option (number or letter) selected from the specification is displayed instead of the placeholders.



Note

We recommend that the Installation Instructions be kept with the packaging at all times.

2 Intended Use

The spare part set and installation instruction are used to replace a faulty unit with a functioning unit of the same type.

Use genuine parts from Pepperl+Fuchs only.

Only original spare part sets, intended by Pepperl+Fuchs for the measuring device, shall be used.



Note

For some devices there is an overview of the correct spare part set inside the connection compartment cover. If the spare part is listed there, the verification is not required.

3 Authorized personnel to carry out repairs

Authorization to carry out a repair depends on the approval of the device. The table shows the respective group of persons for each.



Note

The person who carries out the repair is responsible for safety during the work, the quality of work completed and safety of the device after repair.

Approval of the device	Group of persons authorized to carry out repairs
Without approval	1, 2, 3
With approval (e. g. IECEx)	1, 2, 3
1 = Trained customer technician 2 = Service technician authorized by Pepperl+Fuchs 3 = Pepperl+Fuchs (send measuring device back to manufacturer)	

Table 2

4 Safety Instructions

- Check whether the spare part matches the identification label on the device, see page 7.
- The spare parts set and installation instructions are used to replace a faulty unit with a functioning unit of the same type. Use genuine parts from Pepperl+Fuchs only.
- In the case of Ex-certified measuring devices: Observe the information in the documentation, e. g. instruction manual (SI, ZD). The relevant instruction manuals are indicated on the nameplate.
- The device is energized. Danger: Risk of electric shock! Open the device in a de-energized state only.
- Before removing the device: set the process in a safe condition and purge the pipe of dangerous materials.
- Hot surfaces! Risk of injury! Before commencing work, allow the system and device to cool down to a touchable temperature.
- In the case of devices in custody transfer, the custody transfer status no longer applies once the lead seal has been removed.
- Comply with national regulations governing mounting, electrical installation, commissioning, maintenance and repair procedures.
- Requirements with regard to specialized technical staff for the mounting, electrical installation, commissioning, maintenance and repair of the devices:
 - trained in instrument safety
 - familiar with the individual operation conditions of the devices
 - for Ex-certified devices: also trained in explosion protection
- Follow the manual for the device.
- Risk of damaging electronic components! Ensure you have a working environment protected from electrostatic discharge.
- After removing the electronics cover, there is a risk of electric shock as shock protection is removed! Switch off the device before removing internal covers.
- Modifications to the device are not permitted.
- In the case of devices in safety-related applications in accordance with IEC 61508 or IEC 61511: After repair recommission in accordance with manual. Document the repair procedure.
- Only open housing for a brief period. Avoid the penetration of foreign bodies, moisture or contaminants.
- Replace defective seal/gaskets with genuine parts from Pepperl+Fuchs only.
- If threads are damaged or defective, the device must be repaired.
- If spacing is reduced or the dielectric strength of the device cannot be guaranteed during repair work, perform a test on completion of the work (e. g. high-voltage test in accordance with the manufacturer's instructions).
- Service connector:
 - do not connect in potentially explosive atmospheres.
 - only connect to Endress+Hauser service devices.
- Observe the instructions for transporting and returning the device.
- If you have any questions, please contact your local Pepperl+Fuchs service organization.

5 Tool List

No tools required.

6 Exchange the UNI Slip on Flange

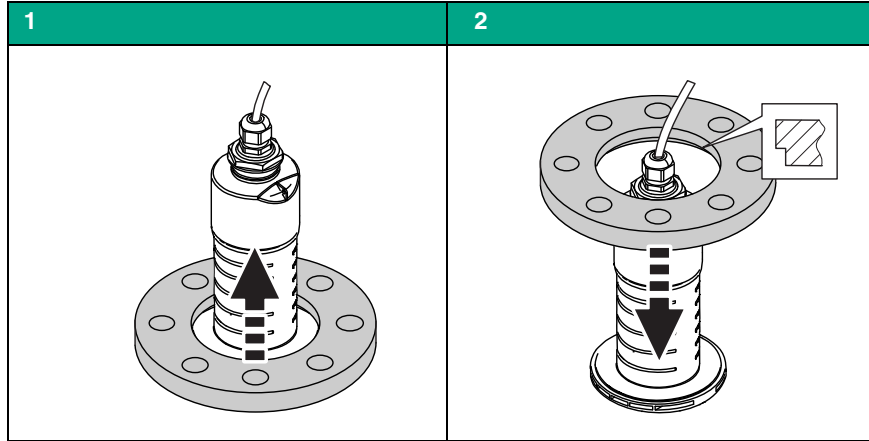


Table 3

EN

Your automation, our passion.

Explosion Protection

- Intrinsic Safety Barriers
- Signal Conditioners
- FieldConnex® Fieldbus
- Remote I/O Systems
- Electrical Ex Equipment
- Purge and Pressurization
- Industrial HMI
- Mobile Computing and Communications
- HART Interface Solutions
- Surge Protection
- Wireless Solutions
- Level Measurement

Industrial Sensors

- Proximity Sensors
- Photoelectric Sensors
- Industrial Vision
- Ultrasonic Sensors
- Rotary Encoders
- Positioning Systems
- Inclination and Acceleration Sensors
- Fieldbus Modules
- AS-Interface
- Identification Systems
- Displays and Signal Processing
- Connectivity

Pepperl+Fuchs Quality
Download our latest policy here:

www.pepperl-fuchs.com/quality

