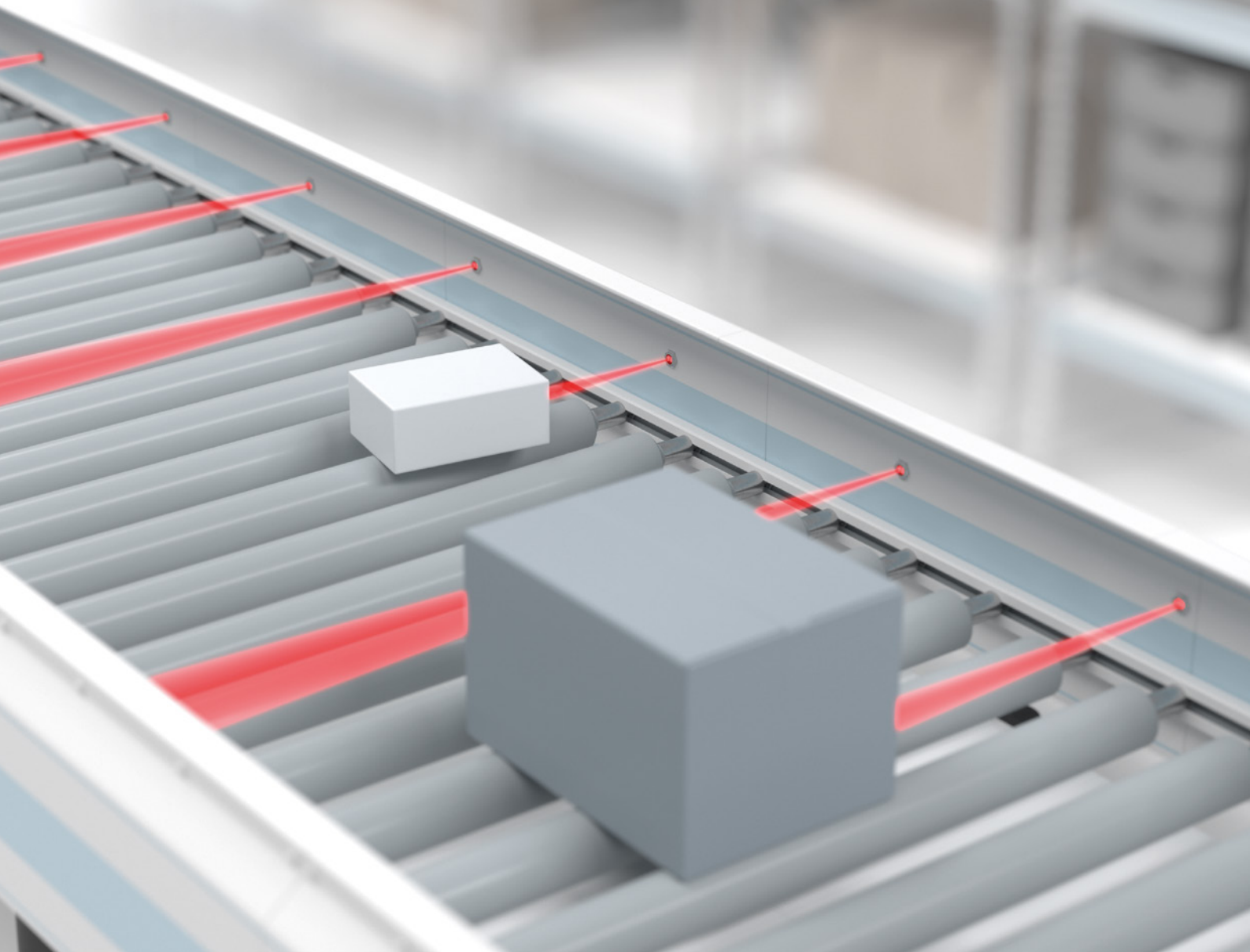


Flexible. Functional.

M18 Series—Cylindrical
Photoelectric Sensors

Five sensing modes; three housing
designs; one user interface—
efficiency in sensor shape.



Your automation, our passion.

 **PEPPERL+FUCHS**

Optimized Portfolio for Standard Applications

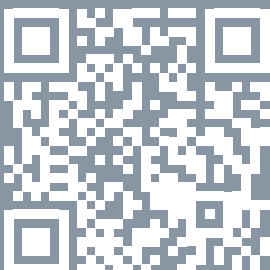
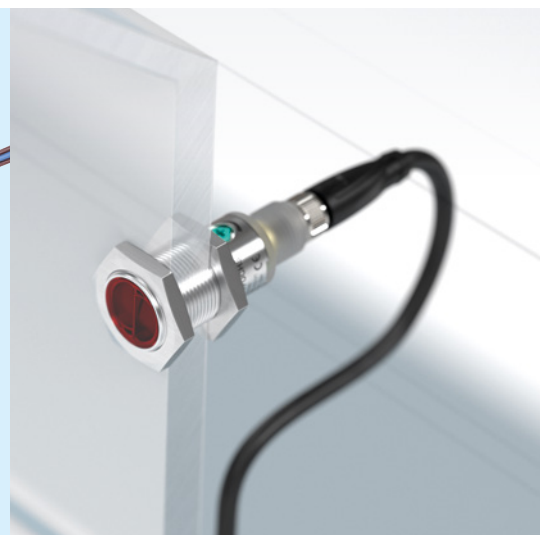
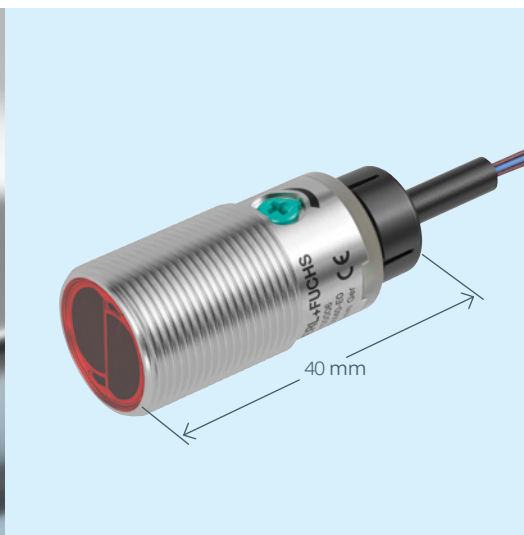
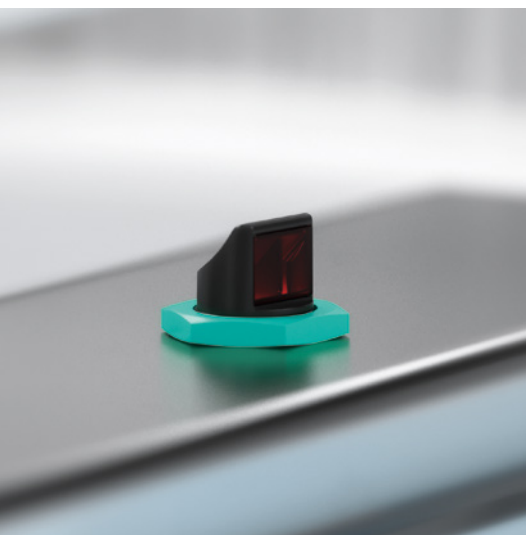
Functional yet flexible—the portfolio of photoelectric, cylindrical sensors in the M18 series is tailored to solve standard applications. The sensor series offers five sensing modes for all designs with a uniform and proven operating concept. This means simple and uncomplicated product selection, starting with the housing design and installation location.

Simple Product Selection—Optimal Sensor Solution

- Plastic or metal housing
- Side-looker or front-looker design
- 40 mm and 60 mm housing length
- Plug or fixed-cable connection
- Five sensing modes: thru-beam sensor, retroreflective sensor, retroreflective sensor for clear object detection, diffuse mode sensor, diffuse mode sensor with background suppression

Especially Rugged and Space-Saving in Confined Installation Locations

- The side-looker version allows installation from below and a view around the corner
- Shortened design measuring only 40 mm for space-saving installation
- Metal housing and metal threads offer high mechanical stability for use in warehousing systems and material handling



Optimized portfolio for easy product selection: Five sensing modes in three housing designs



Simple installation and commissioning due to uniform user interface—in any housing design with any sensing mode



Robust metal housing and shortened design for demanding applications and confined installation situations