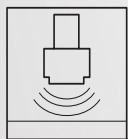
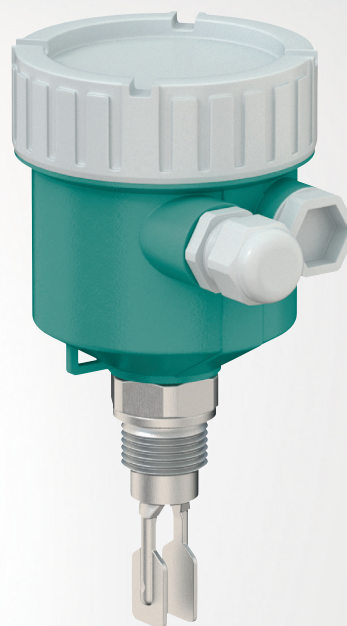


LVL-M3

Vibration Limit Switch

Control Drawing XP

Temperature Tables



Your automation, our passion.

 **PEPPERL+FUCHS**

With regard to the supply of products, the current issue of the following document is applicable:
The General Terms of Delivery for Products and Services of the Electrical Industry, published by the Central Association of the Electrical Industry (Zentralverband Elektrotechnik und Elektroindustrie (ZVEI) e.V.) in its most recent version as well as the supplementary clause: "Expanded reservation of proprietorship"

Worldwide

Pepperl+Fuchs Group

Lilienthalstr. 200

68307 Mannheim

Germany

Phone: +49 621 776 - 0

E-mail: info@de.pepperl-fuchs.com

North American Headquarters

Pepperl+Fuchs Inc.

1600 Enterprise Parkway

Twinsburg, Ohio 44087

USA

Phone: +1 330 425-3555

E-mail: sales@us.pepperl-fuchs.com

Asia Headquarters

Pepperl+Fuchs Pte. Ltd.

P+F Building

18 Ayer Rajah Crescent

Singapore 139942

Phone: +65 6779-9091

E-mail: sales@sg.pepperl-fuchs.com

<https://www.pepperl-fuchs.com>

1 Associated Documentation

The corresponding datasheets, manuals, instruction manuals, declarations of conformity, EU type examination certificates, certificates, and control drawings if applicable are an integral part of this document. You can find this information under www.pepperl-fuchs.com.

This document does not substitute the instruction manual.

For full information on the product, refer to the instruction manual and further documentation on the Internet at www.pepperl-fuchs.com.

This document is an integral part of the following documents: DOCT-8106, DOCT-8109, DOCT-8485.

For specific device information such as the year of construction, scan the QR code on the device. As an alternative, enter the serial number in the serial number search at www.pepperl-fuchs.com.

2 Supplementary Documentation

Information for explosion protection:

The information can be found on the Internet at www.pepperl-fuchs.com.

3 Manufacturer's Certificates

CSA C/US certificate

Certificate number: CSA C/US 80140625

The certificate is available on the product detail page of the devices on the internet at www.pepperl-fuchs.com.

Enter the order designation in the search field → Select the appropriate product → Open the product detail page → Open the **Approvals+Certificates** tab.

4 Manufacturer Address

Pepperl+Fuchs Group
Lilienthalstraße 200, 68307 Mannheim, Germany

Internet: www.pepperl-fuchs.com

5 Device Versions

Device type	Basic specifications	Optional specifications
LVL-M3	-XXXXXX-XXXXXX-XX	+XX

The X-marked letters of the type code are placeholders for versions of the device.

The following specifications reproduce an extract from the product structure and are used to assign.

Basic specifications

Option	Type of probe
A	Compact version
B	Short tube version
C	Tube extension

Option	Sensor length, material
B	Compact version, 316L
D	Short tube version, 316L
F	Tube extension, length L in mm, 316L, Ra < 3.2 µm/126 µinch
H	Tube extension, length L in inch, 316L, Ra < 3.2 µm/126 µinch

Option	Housing, material
A	Single compartment, aluminum, coated

Option	Electrical connection
I	Thread NPT3/4, IP66/68, NEMA type 4X/6P

Option	Electrical output
E	FEL42, 3-wire PNP, 10 V DC to 55 V DC
N	FEL48, 2-wire NAMUR
W	FEL44, relay DPDT, 19 V AC to 253 V AC/19 V DC to 55 V DC, contact 253 V/6 A

Option	Approval
CX	CSA C/US XP Cl. I Div. 1 Gr. A-D, Cl. I Zone 1, AEx/Ex d IIC T6

Optional specifications

Option	Accessory enclosed
WP	Weather protection cover, plastic

6 Safety Instructions: Installation

Continuous service temperature of the connecting cable/cable gland/cable entry:

- Basic specification, feature **Electrical output**, option **E**: $\geq T_{amb} + 35 \text{ K}$
- Basic specification, feature **Electrical output**, option **N**: $\geq T_{amb} + 20 \text{ K}$
- Basic specification, feature **Electrical output**, option **W**: $\geq T_{amb} + 40 \text{ K}$

7 Temperature Tables

General notes

Optional specification, feature **Accessories enclosed**, option **WP**



Note

When using the weather protection cover: Reduce the values T_{amb} of P1, P2, P3 by 16 K.

Description notes



Note

Unless otherwise indicated, the positions always refer to the basic specification.

- 1st column: basic specification, feature **Electrical output**, options **E, N, W**
- 2nd column: maximum load current
- 3rd column: temperature classes T6 (85 °C) to T1 (450 °C)
- Column P1 to P5: position (temperature value) on the axes of the derating
 - T_{amb} : ambient temperature in °C
 - T_p : process temperature in °C

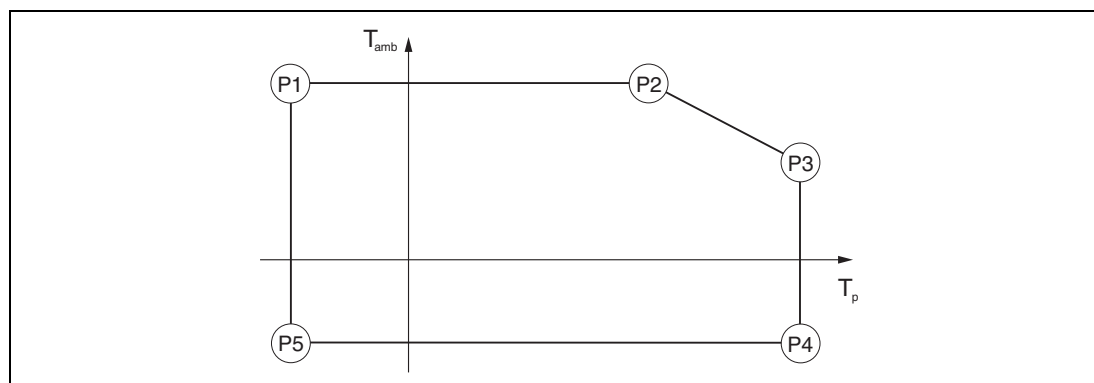


Figure 1

Zone 0, Zone 1, Class I, Div. 1

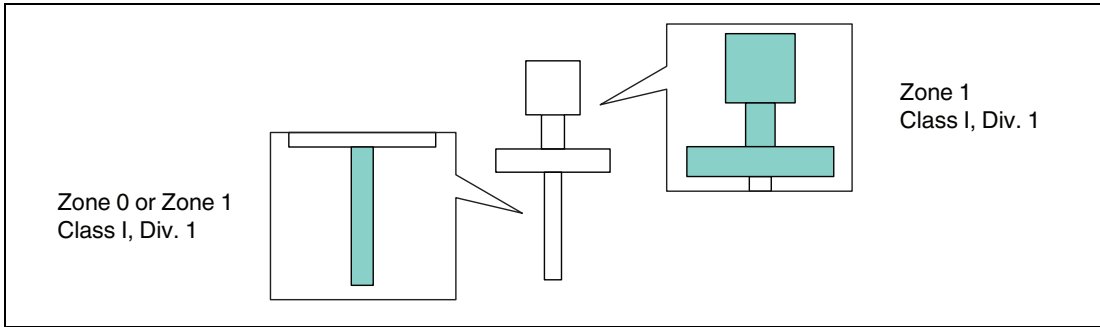


Figure 2

Basic specification, feature Electrical output

Option E												
	350 mA	P1		P2		P3		P4		P5		
		T _p	T _{amb}	T _p	T _{amb}	T _p	T _{amb}	T _p	T _{amb}	T _p	T _{amb}	
		T6	-40	70	70	70	75	70	75	-40	-40	-40
		T5	-40	70	70	70	90	70	90	-40	-40	-40
		T4	-40	70	70	70	125	55	125	-40	-40	-40
		T3	-40	70	70	70	150	45	150	-40	-40	-40

Table 1

Option N												
		P1		P2		P3		P4		P5		
		T _p	T _{amb}	T _p	T _{amb}	T _p	T _{amb}	T _p	T _{amb}	T _p	T _{amb}	
		T6	-40	70	70	70	75	70	75	-40	-40	-40
		T5	-40	70	70	70	90	70	90	-40	-40	-40
		T4	-40	70	70	70	125	70	125	-40	-40	-40
		T3	-40	70	70	70	150	70	150	-40	-40	-40

Table 2

Option W												
	2 A	P1		P2		P3		P4		P5		
		T _p	T _{amb}	T _p	T _{amb}	T _p	T _{amb}	T _p	T _{amb}	T _p	T _{amb}	
		T6	-40	52	52	52	75	40	75	-40	-40	-40
		T5	-40	67	67	67	90	55	90	-40	-40	-40
		T4	-40	70	70	70	125	47	125	-40	-40	-40
		T3	-40	70	70	70	150	38	150	-40	-40	-40

Table 3

8 Connection Data

Basic specification, feature Electrical output

Option	Power supply circuit	Output
E	U = 10 to 55 V DC P _{max} < 0.5 W	I _{max} = 350 mA
N	U = 4 to 8.2 V DC	NAMUR, I _{max} = 3.8 mA
W	U = 19 to 253 V AC, 50/60 Hz or 19 to 55 V DC P _{max} < 25 VA or < 1.3 W	2 potential free changeover contacts, 2 A

Table 4

Your automation, our passion.

Explosion Protection

- Intrinsic Safety Barriers
- Signal Conditioners
- FieldConnex® Fieldbus
- Remote I/O Systems
- Electrical Ex Equipment
- Purge and Pressurization
- Industrial HMI
- Mobile Computing and Communications
- HART Interface Solutions
- Surge Protection
- Wireless Solutions
- Level Measurement

Industrial Sensors

- Proximity Sensors
- Photoelectric Sensors
- Industrial Vision
- Ultrasonic Sensors
- Rotary Encoders
- Positioning Systems
- Inclination and Acceleration Sensors
- Fieldbus Modules
- AS-Interface
- Identification Systems
- Displays and Signal Processing
- Connectivity

Pepperl+Fuchs Quality

Download our latest policy here:

www.pepperl-fuchs.com/quality

